

Creating Automatic Tiled Layouts

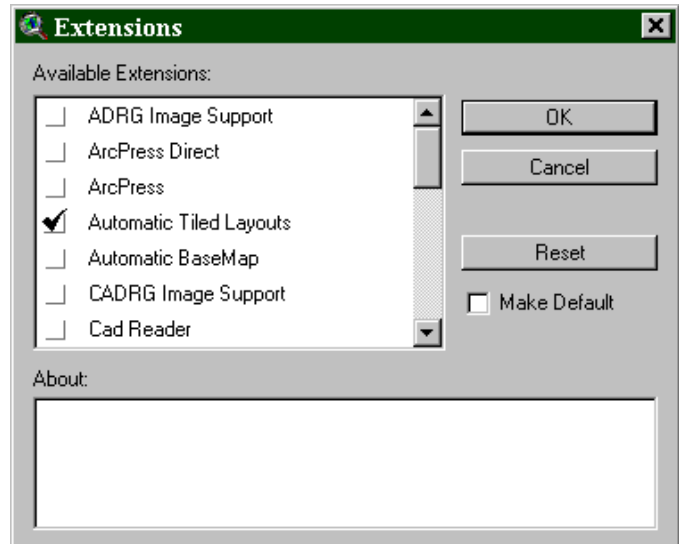
Creating uniform multiple layouts based on one style can be a tedious and time-consuming process. This extension allows the user to automatically generate map pages in ArcView based on a Master Layout document and one of several tiling methods.

The **Automatic Tiled Layouts** extension file is called **auto_til.avx** and should be placed in the C:\esri\avgis_30\arcview\ext32 folder.


Load the extension by selecting **Extensions** from the **File** menu. Check the box next to **Automatic Tiled Layouts**.

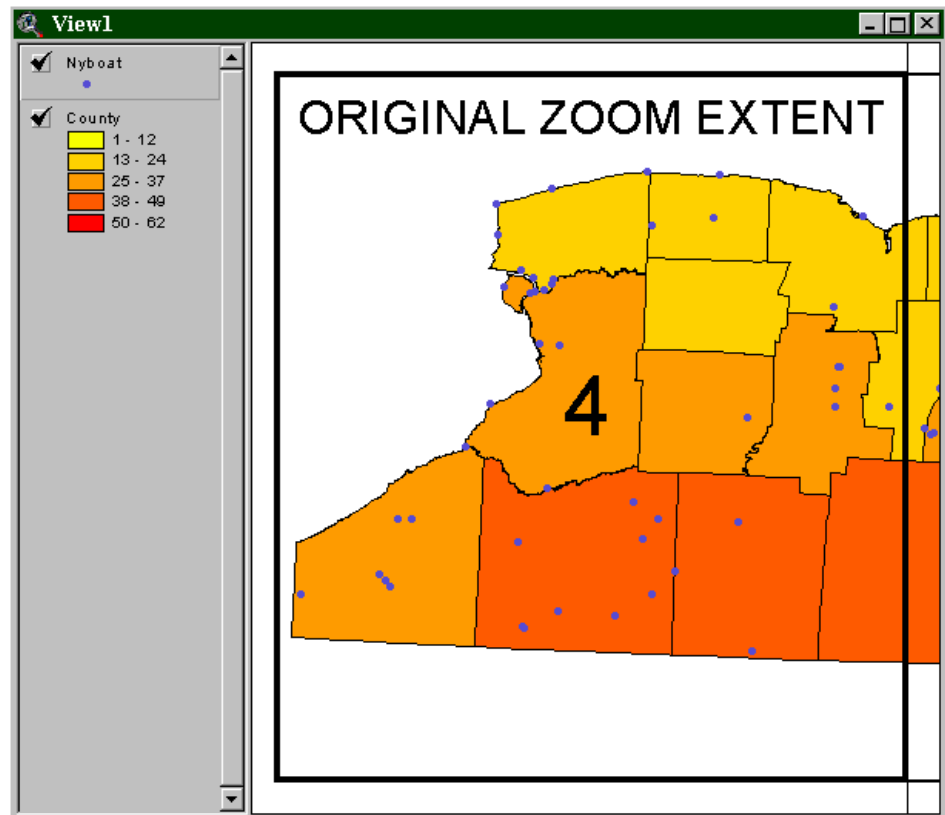
A button is added to the right end of the

View GUI: 

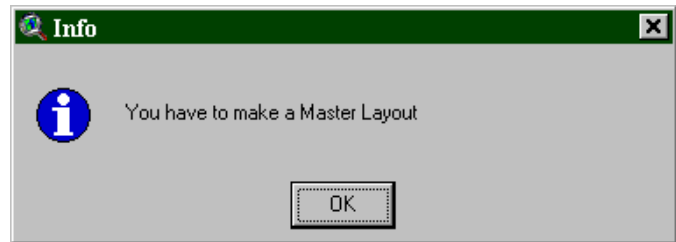


Assume that you have a View with two themes loaded and you have zoomed to an area smaller than the extents of the entire view.

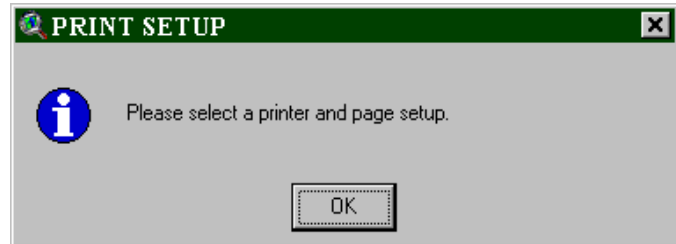
Click on the  button to begin the layouts creation process.



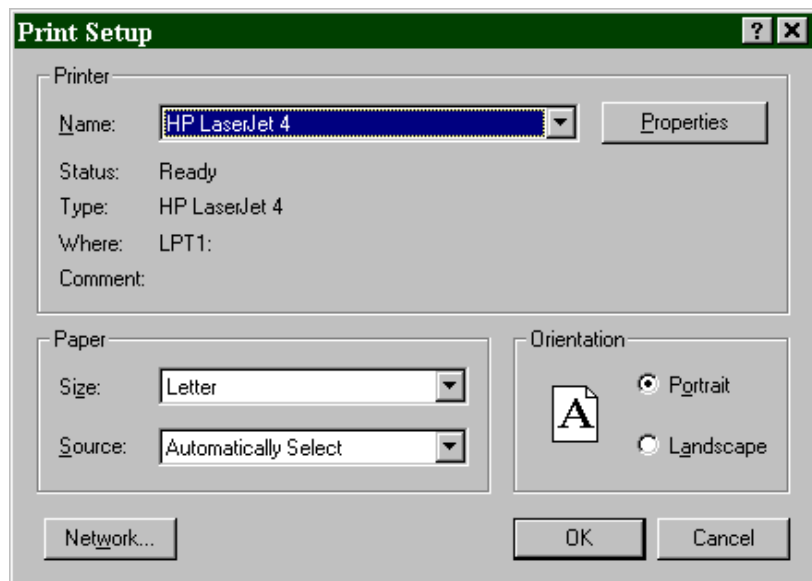
Before layouts can be automatically generated, a Master Layout must be created. The proportions of the View Frame in this document may cause the View to be resized for some tiling methods.



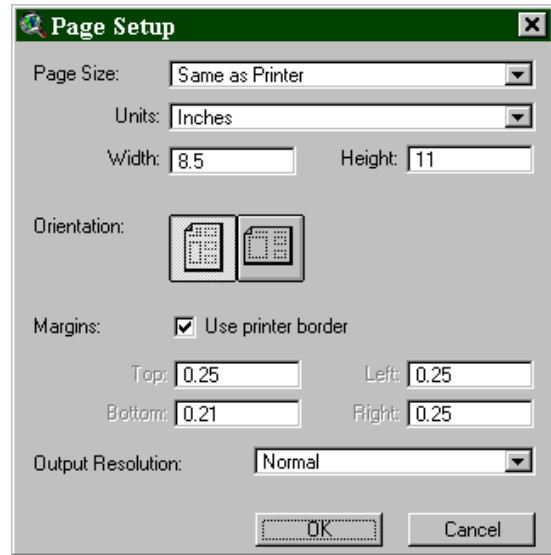
The first step in creating the Master Layout is to define the page...



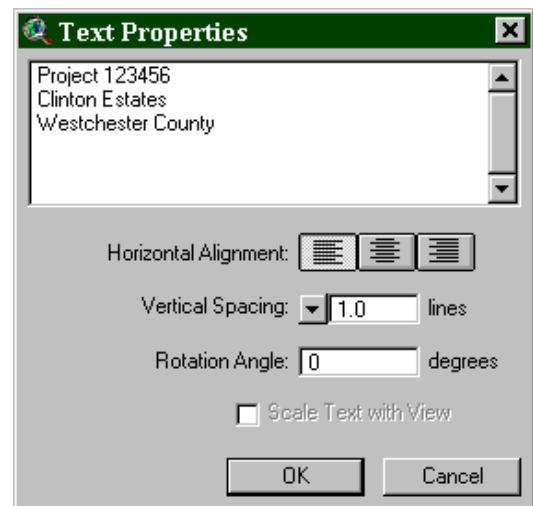
...by selecting a printer...



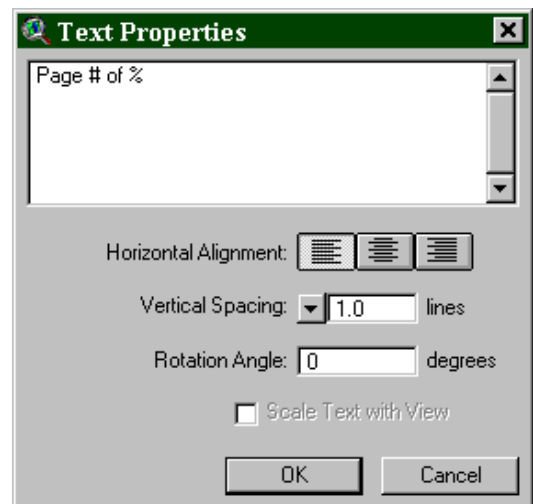
...and setting the page size and orientation.



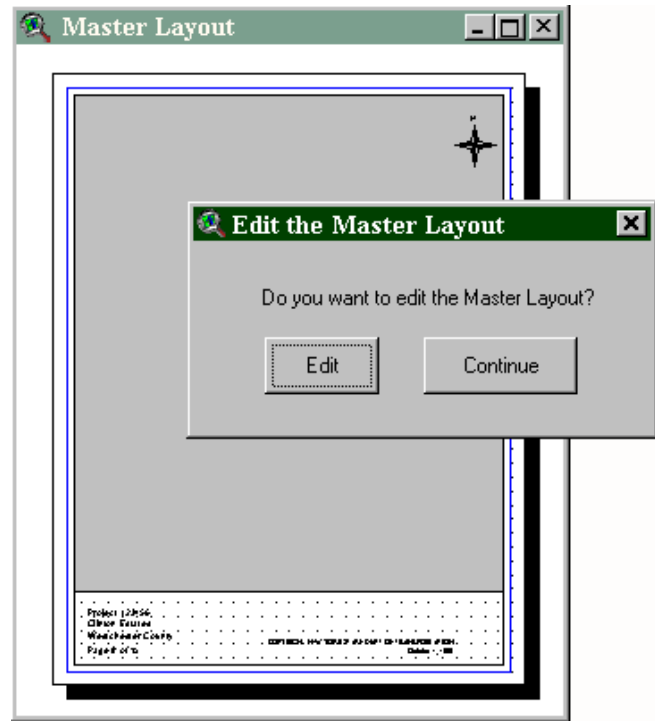
A Title Box can be created containing project information or other descriptive text.



An additional text string can be added to indicate the page number and total number of pages. Upon generation of each layout page, the # character will be replaced by the page number; the % character will be replaced by the total number of pages. This string is optional, and one or both of these special characters may be used.

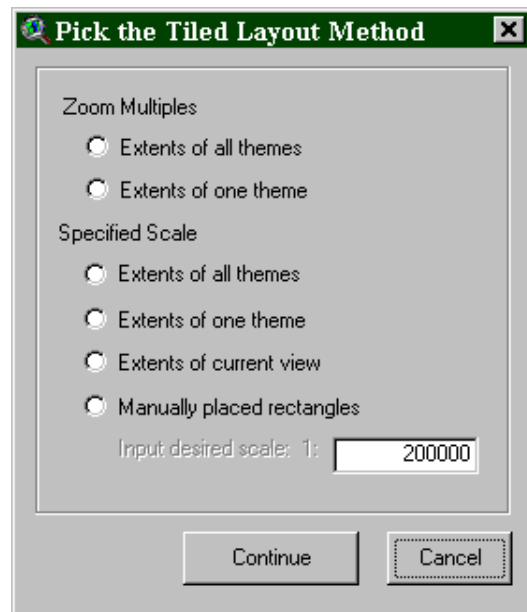


The Master Layout document is opened (for your inspection) and you are given the chance to make any changes before continuing. Clicking the “Edit” button will make the layout active. Clicking the “Continue” button will close the layout and open the “Pick Method” dialog box.

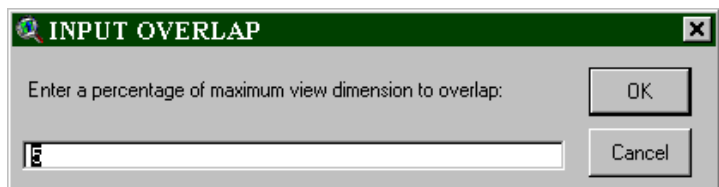


Because the example View is zoomed in, the *Zoom Multiples* options are available; because there is more than one theme loaded, the *Extents of one theme* options are available.

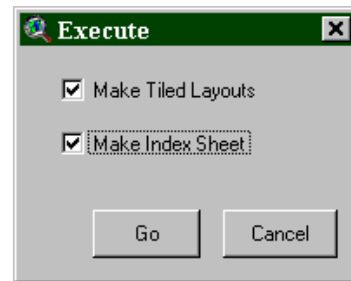
For this example, we will select *Zoom Multiples*, *Extents of all themes* and click on the Continue button to proceed.



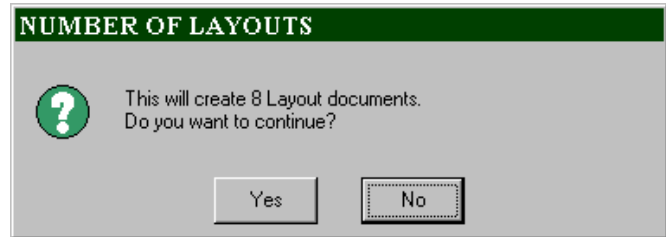
You will be prompted for a percentage of overlap for adjacent map pages. The default is 5 percent.



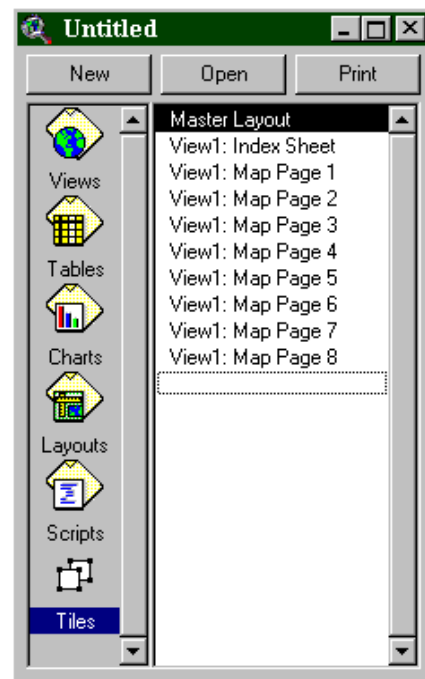
The application will then calculate the placement of tile rectangles on the View and open the Execute dialog box.



For a “sanity check,” you are prompted with the number of map pages to be created, not counting the Index Sheet.



The layouts are created using the special DocGUI called “Tiles,” which is a copy of the Layouts DocGUI. The project window shows that each layout document is named with the View it was generated from and the page number.



You may now clear all the settings used by the application, restore feature selections in the View (if applicable), and return to the original zoom extents.



This is the Index Sheet created by the example.

