

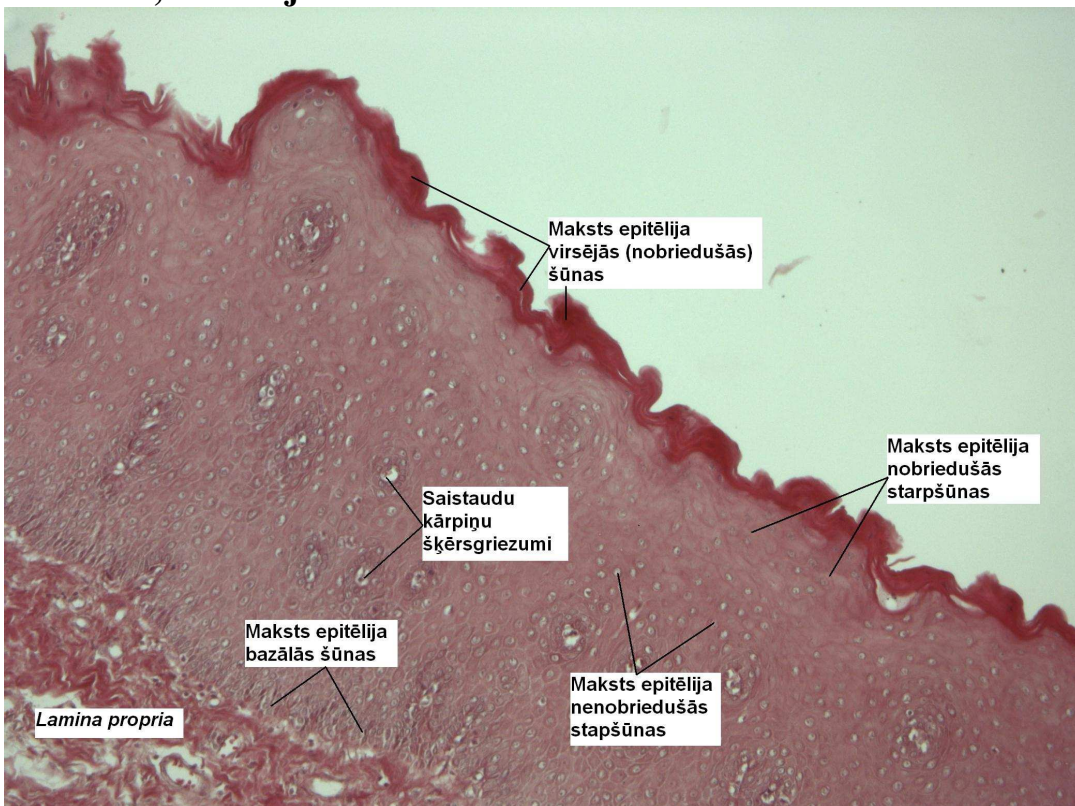
Speciālās histoloģijas kurss

Laboratorijas darbos izmantoto preparātu attēlu atlants

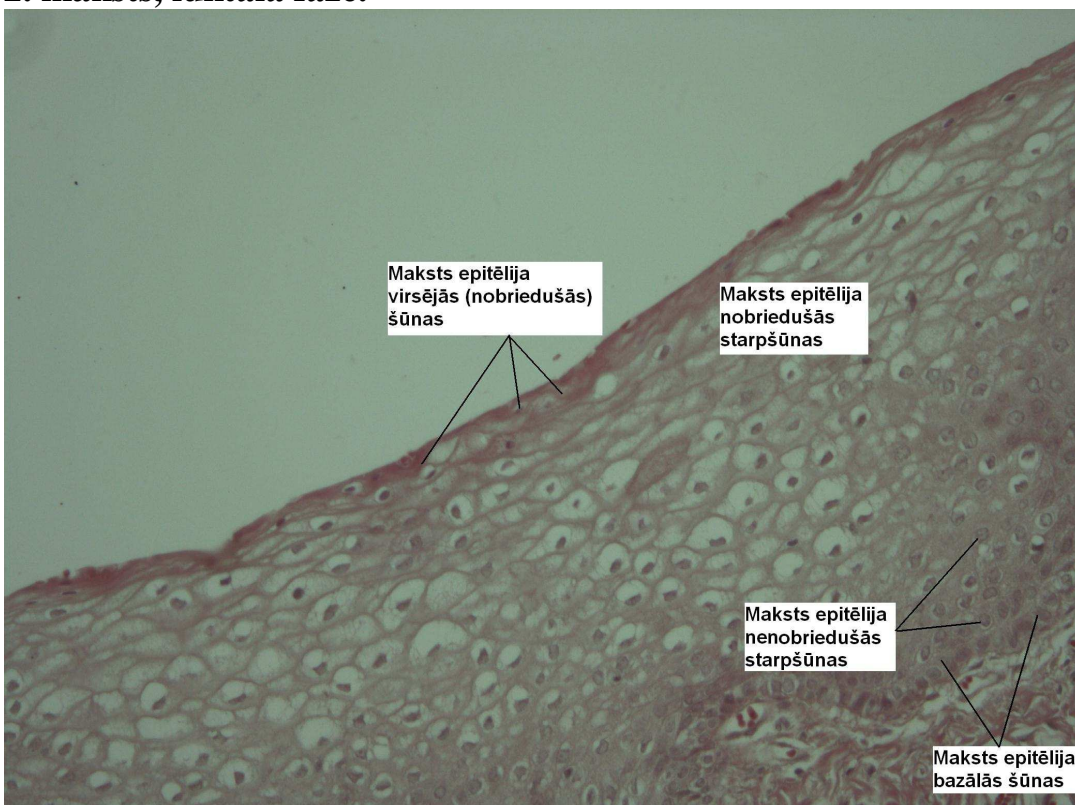
Rīga 2011.

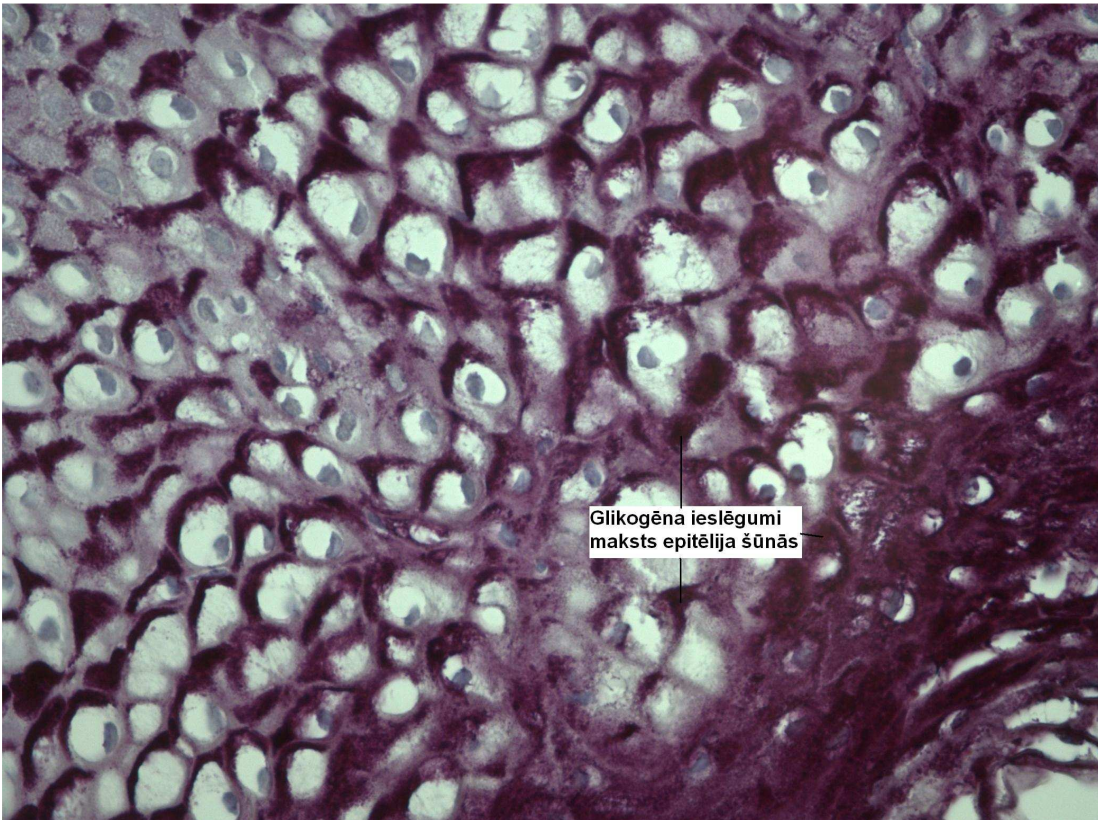
12. un 13. nodarbība Sievietes dzimumsistēma

1. maksts, ovulācijas fāze.

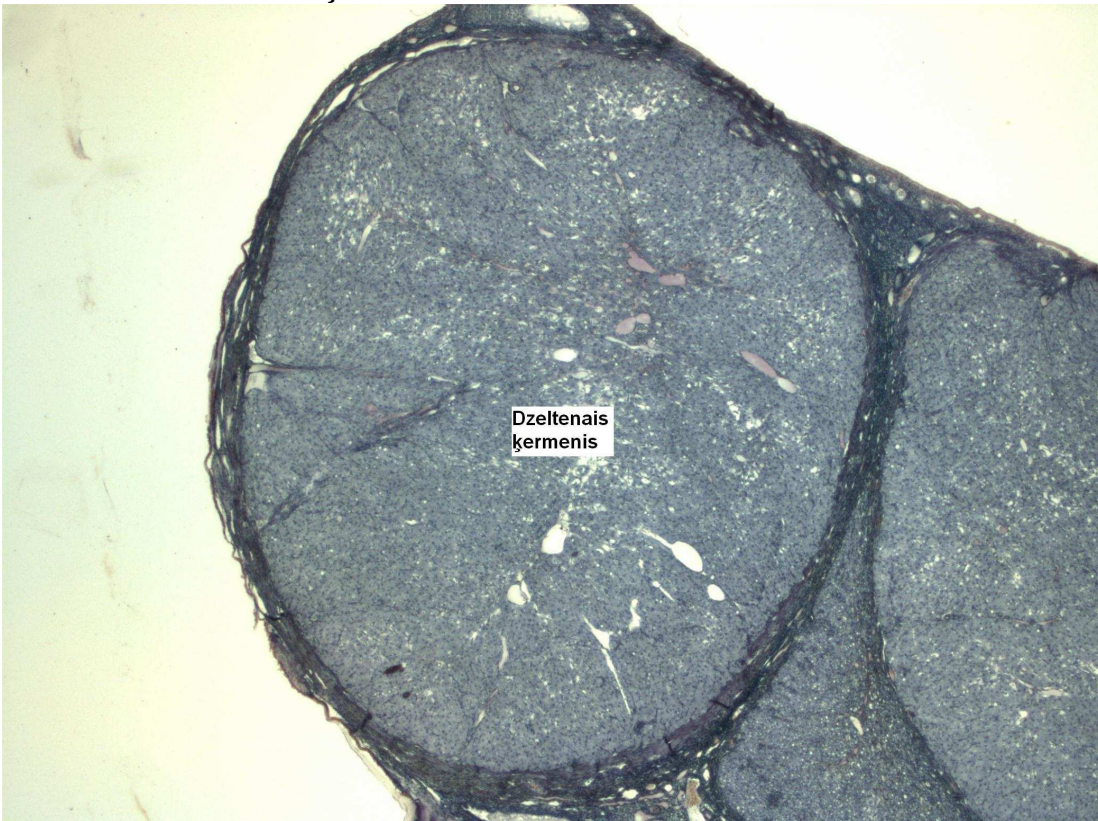


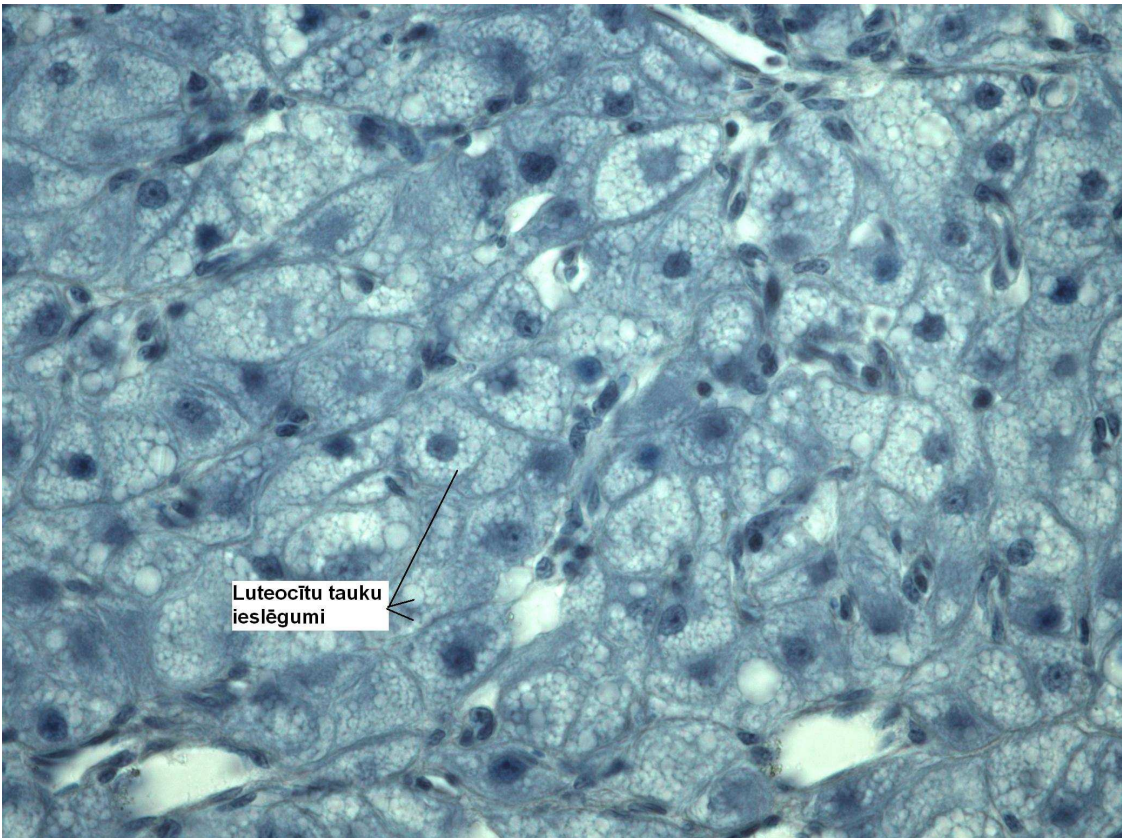
2. maksts, luktālā fāze.



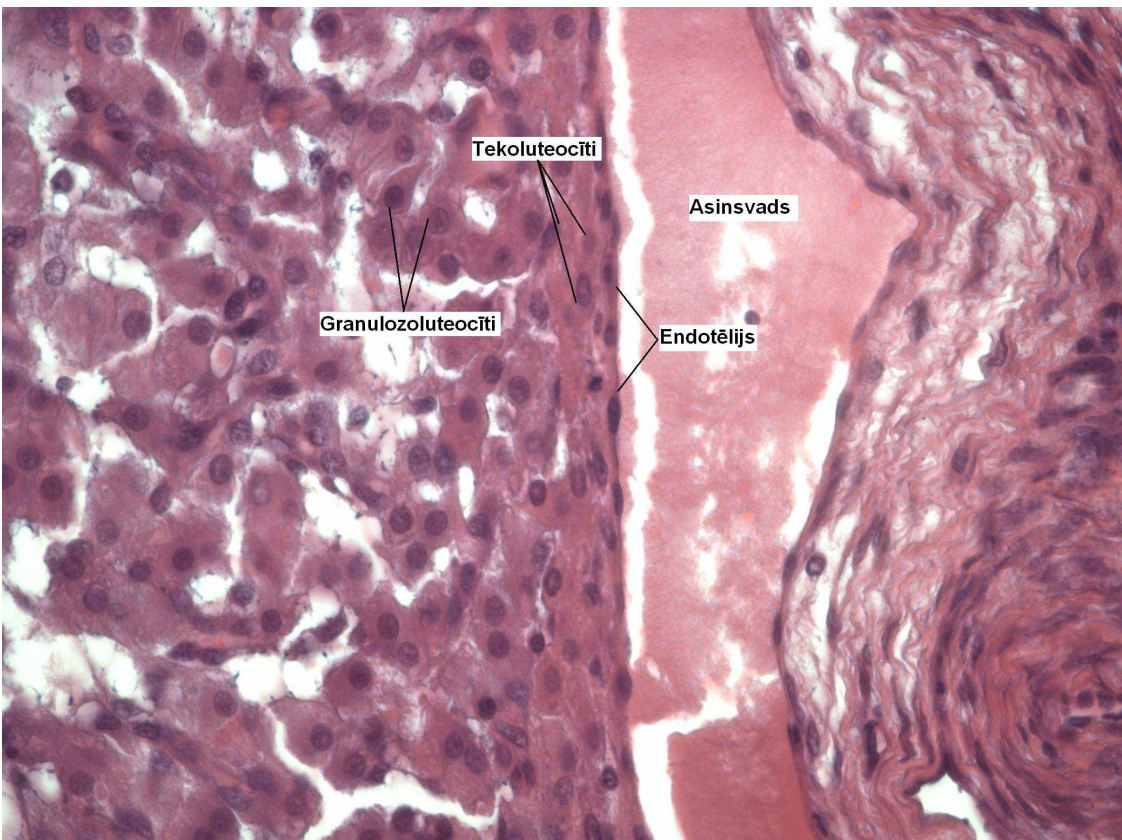


3. Olnīca dzeltenais ķermenis

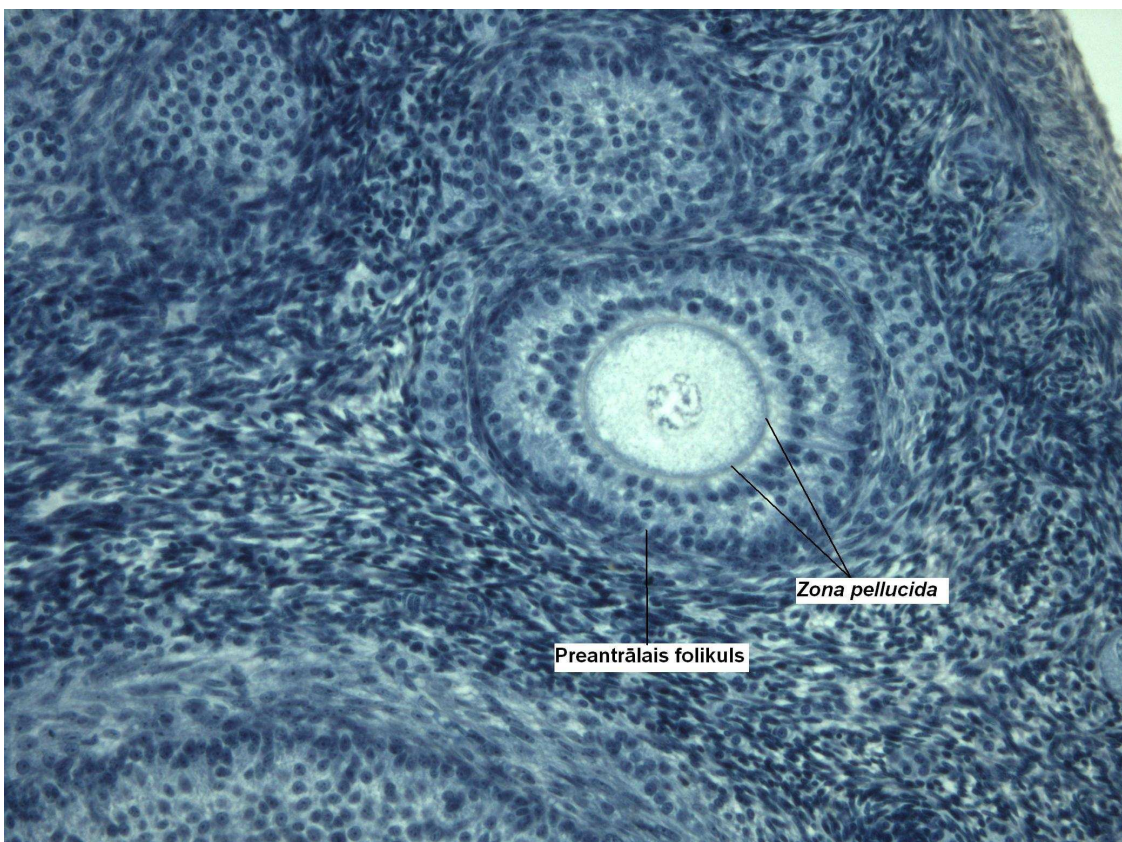
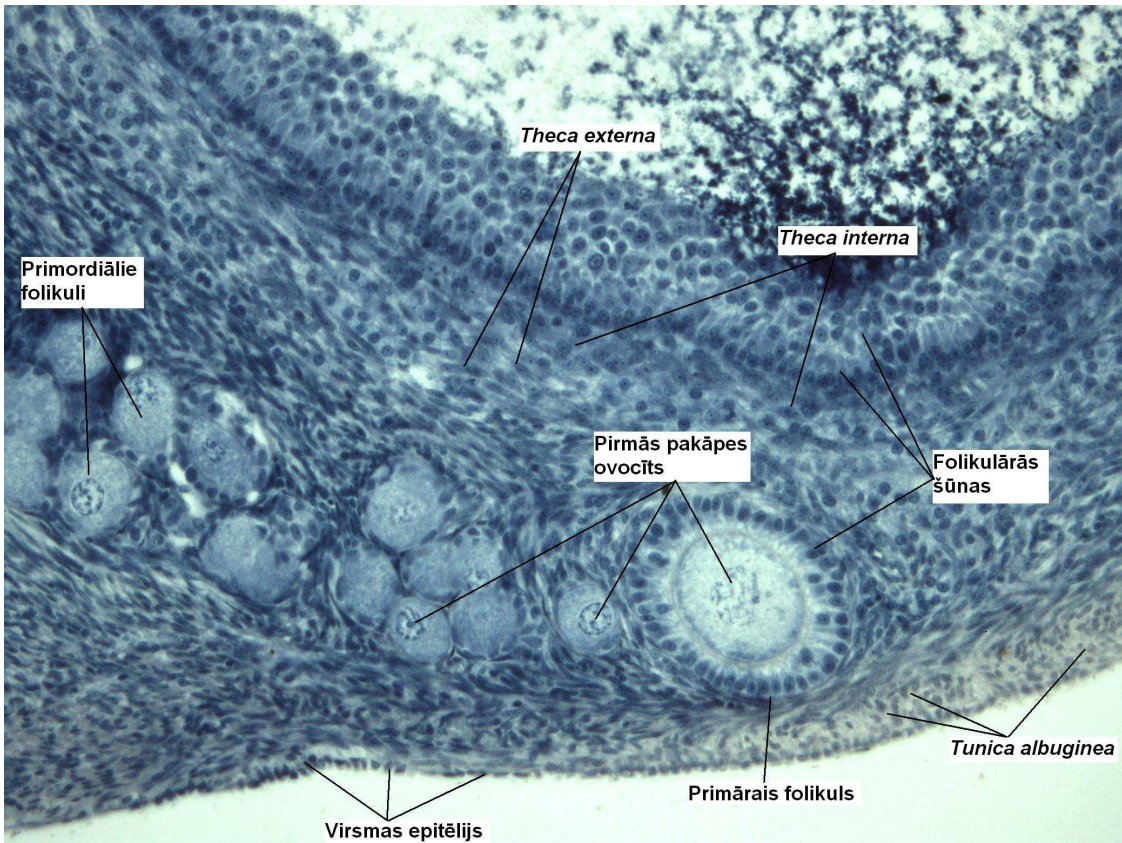


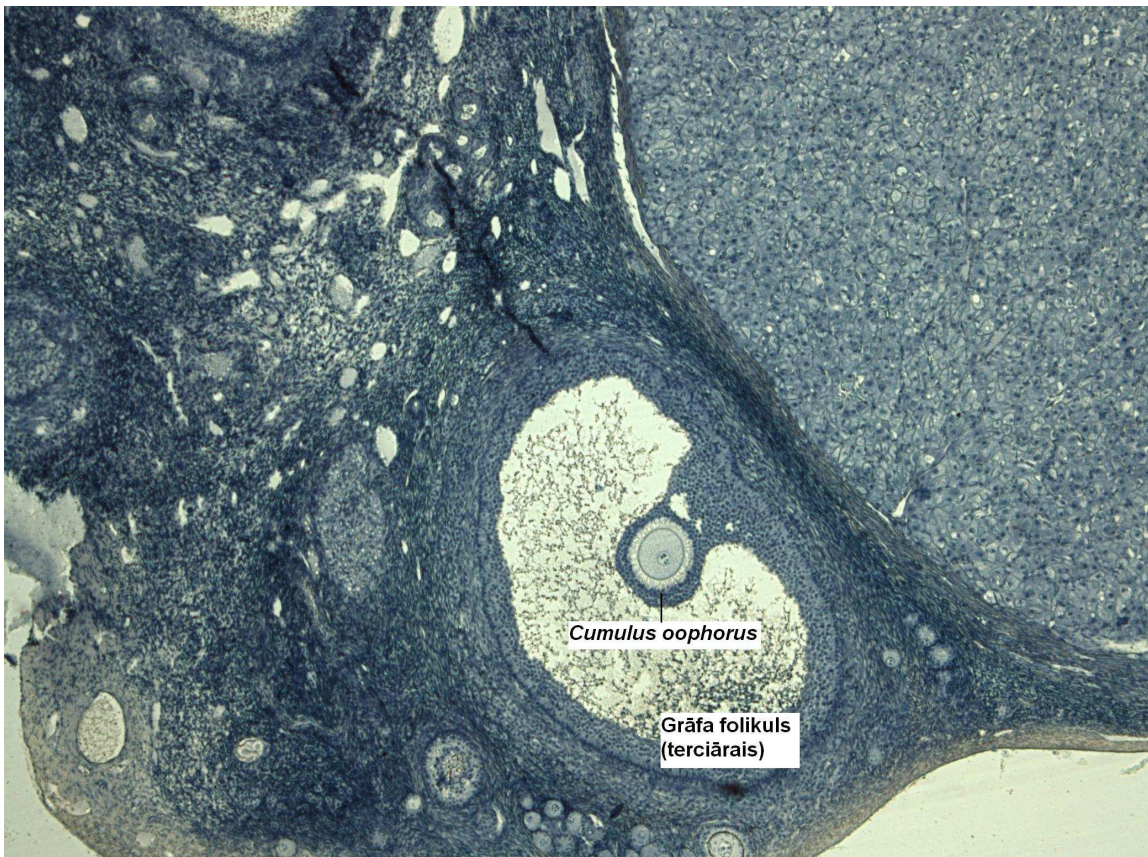


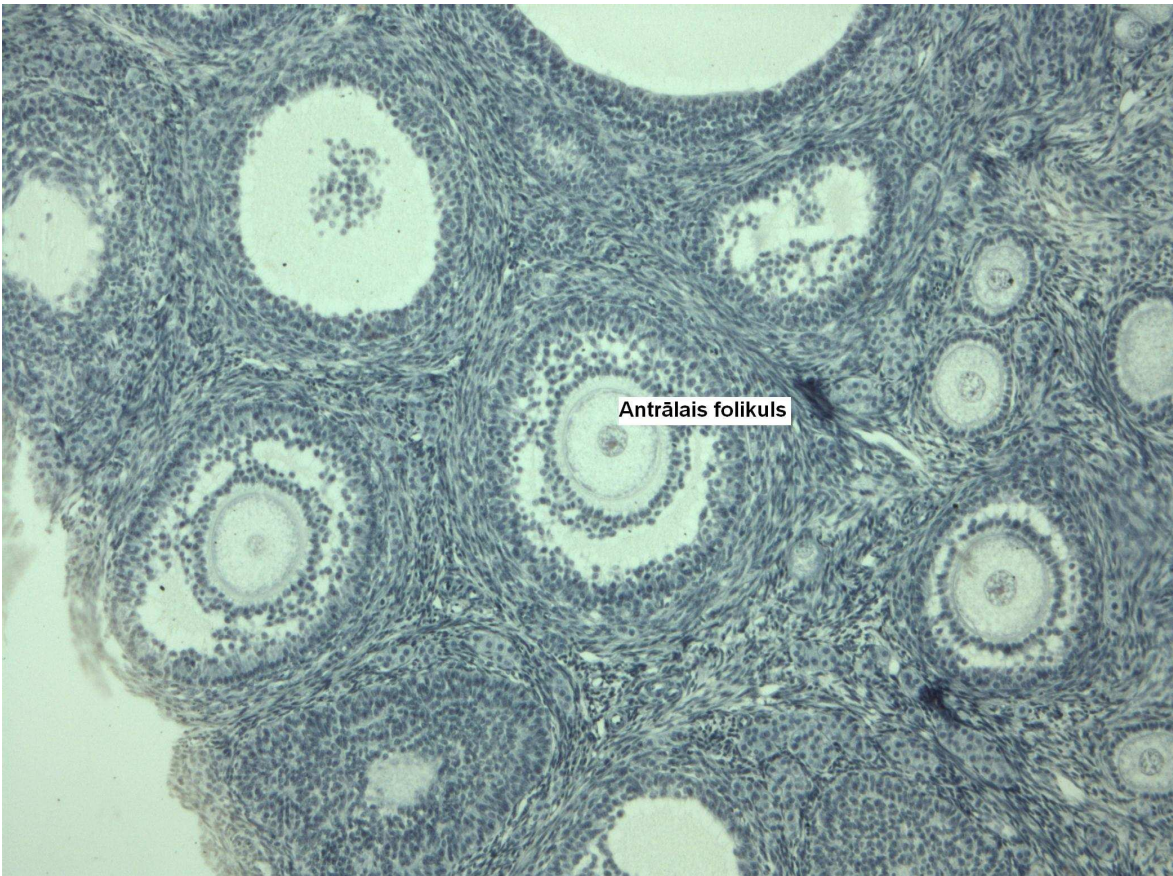
4. Luteocītu veidi



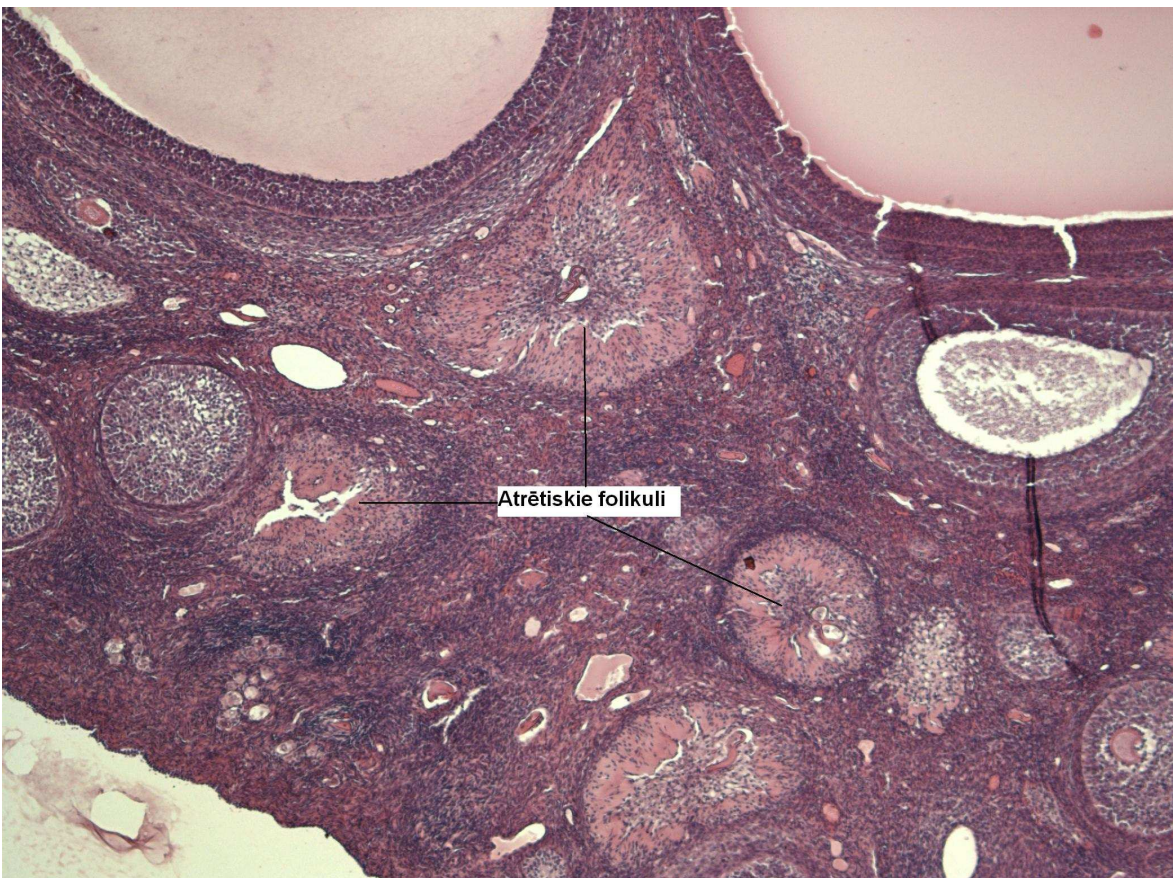
5. Olnīcas folikulu veidi un struktūra



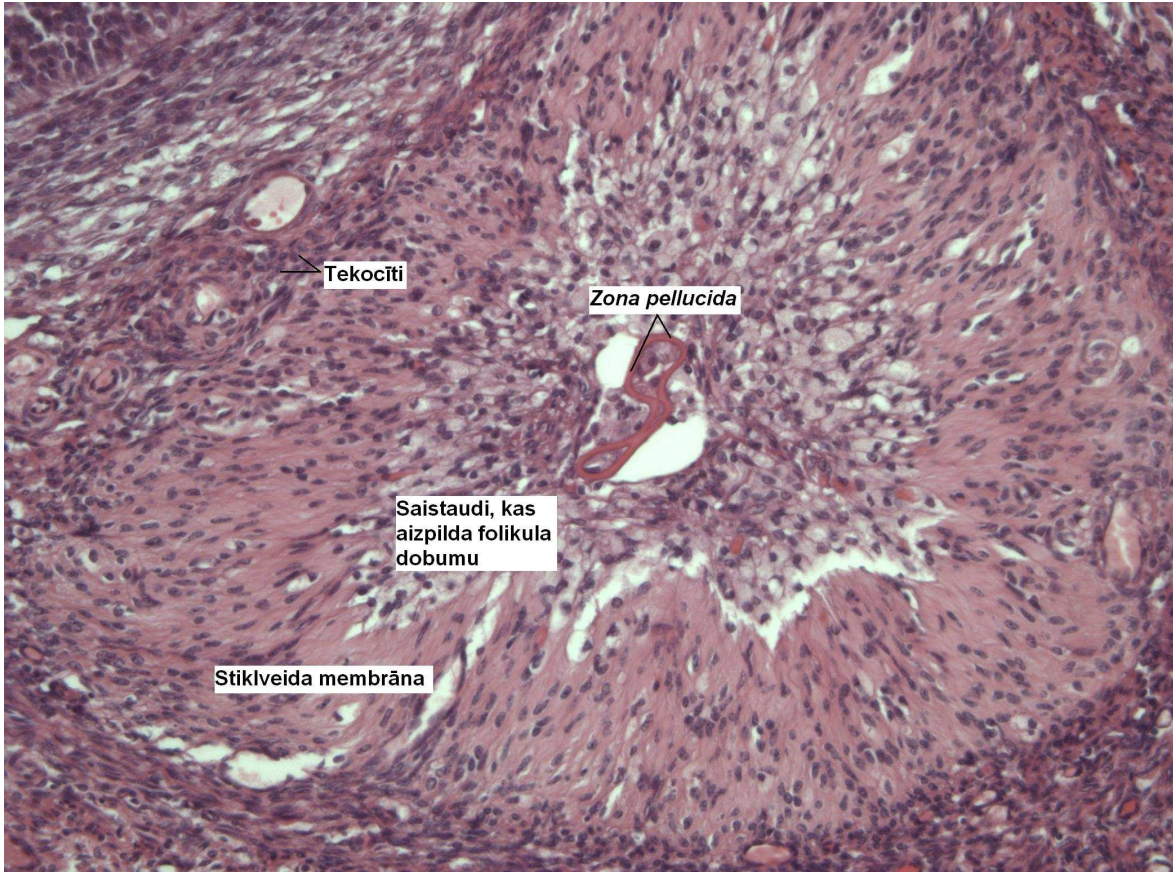




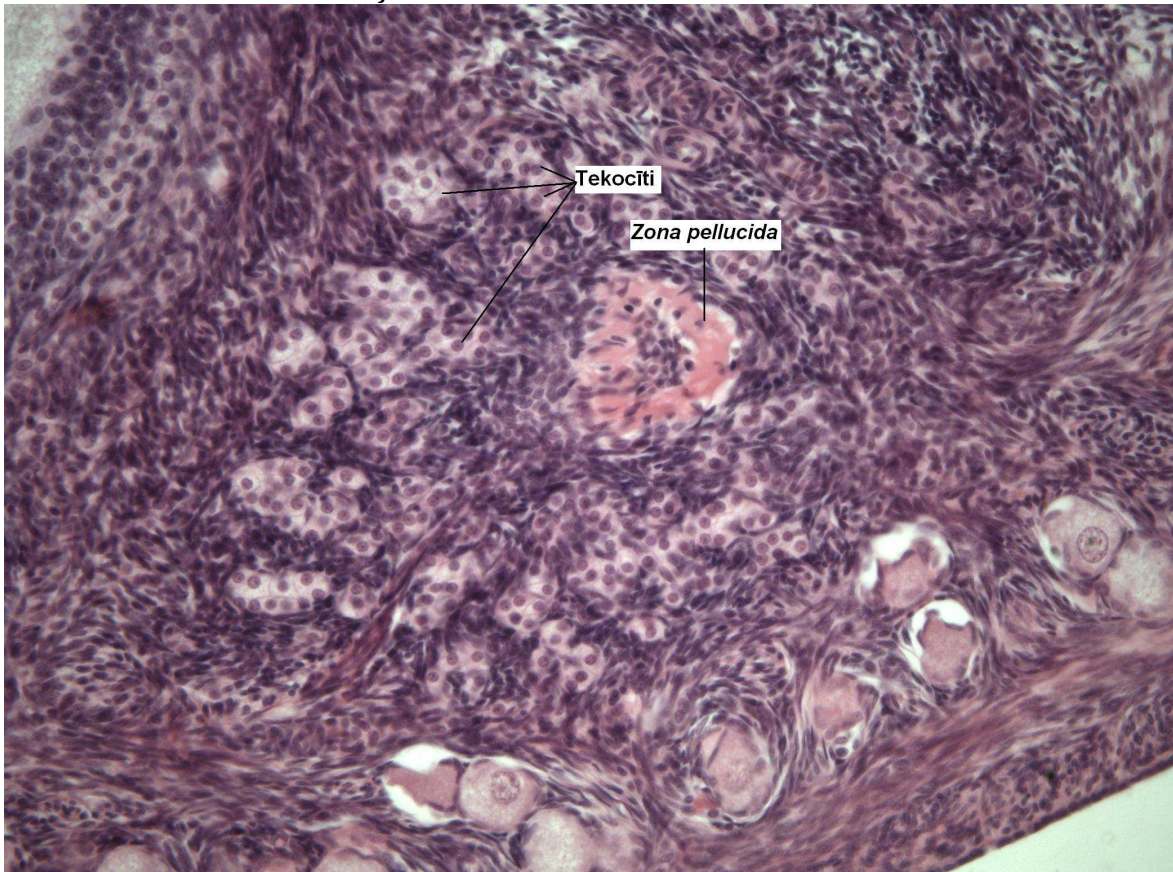
6. Atrētiskie folikuli



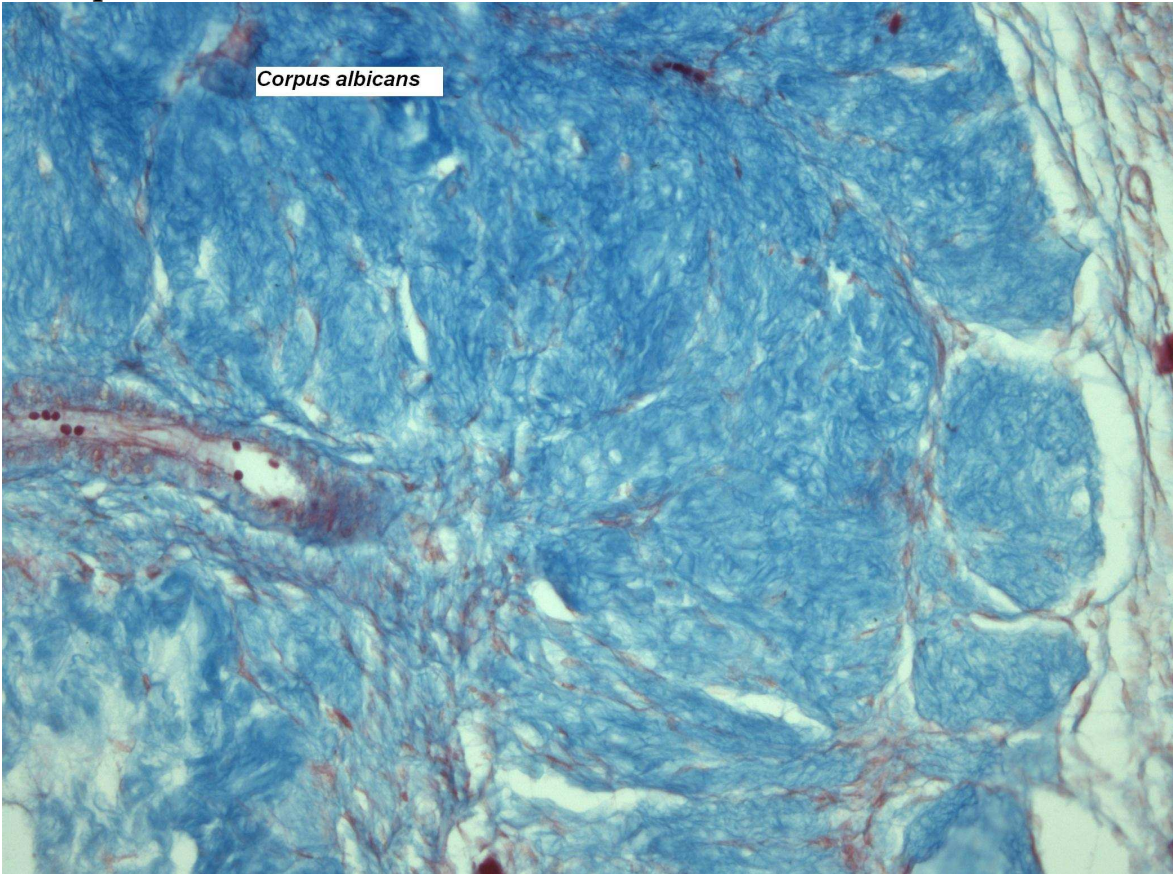
7. Atrētiskie folikuli cilvēka šūnās



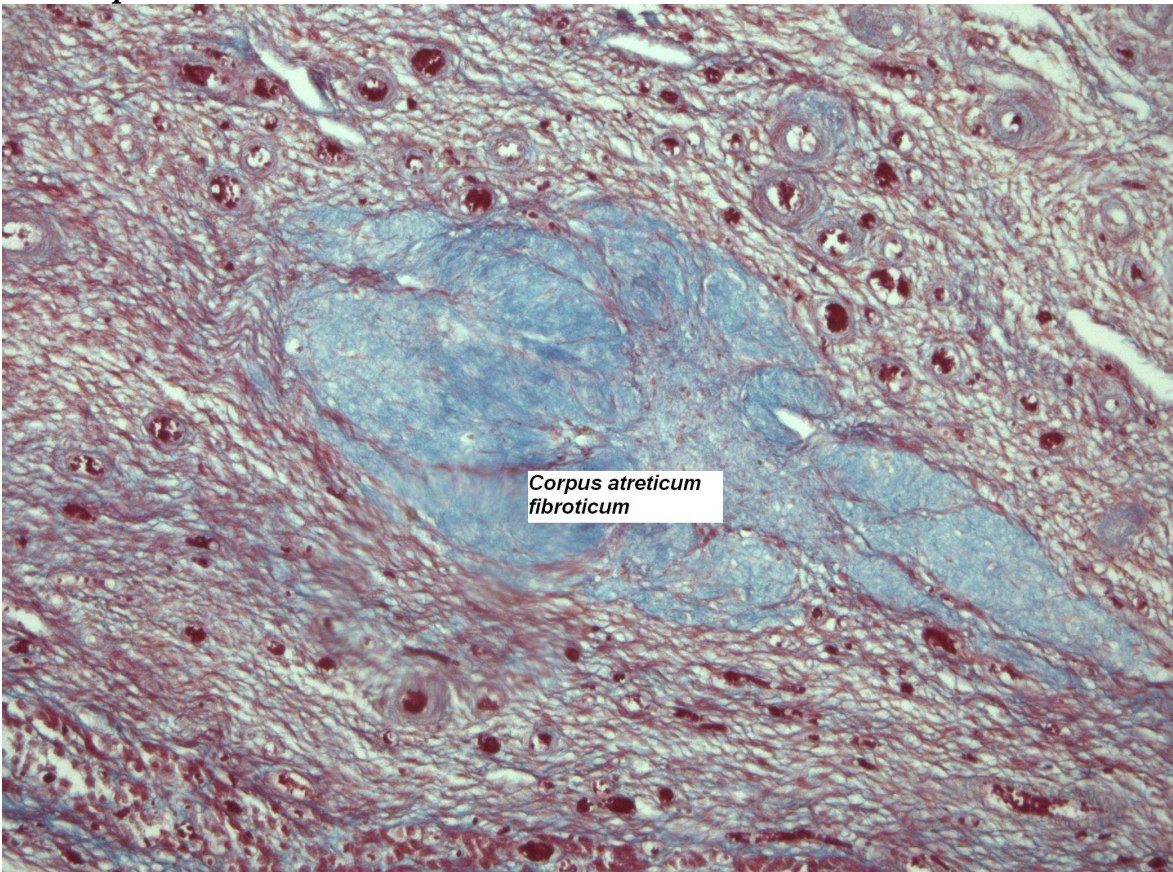
8. Atrētiskie folikuli kaķa šūnās



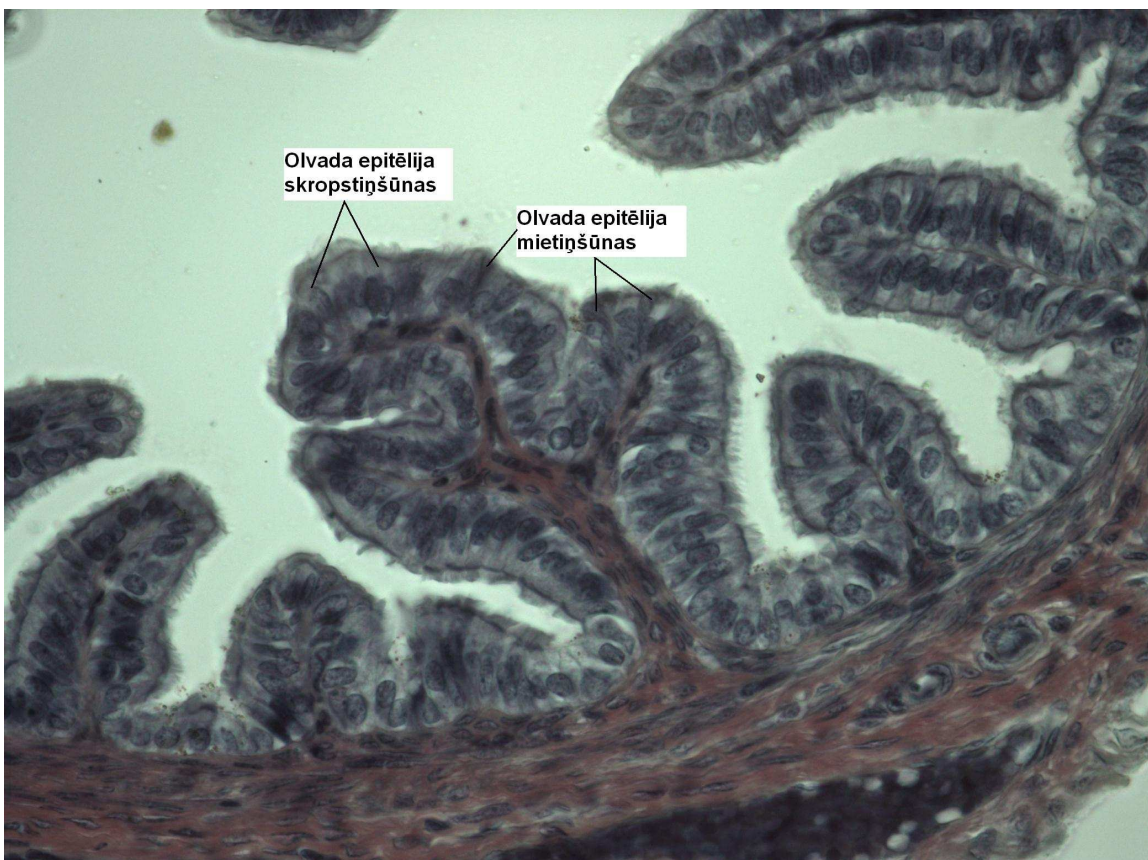
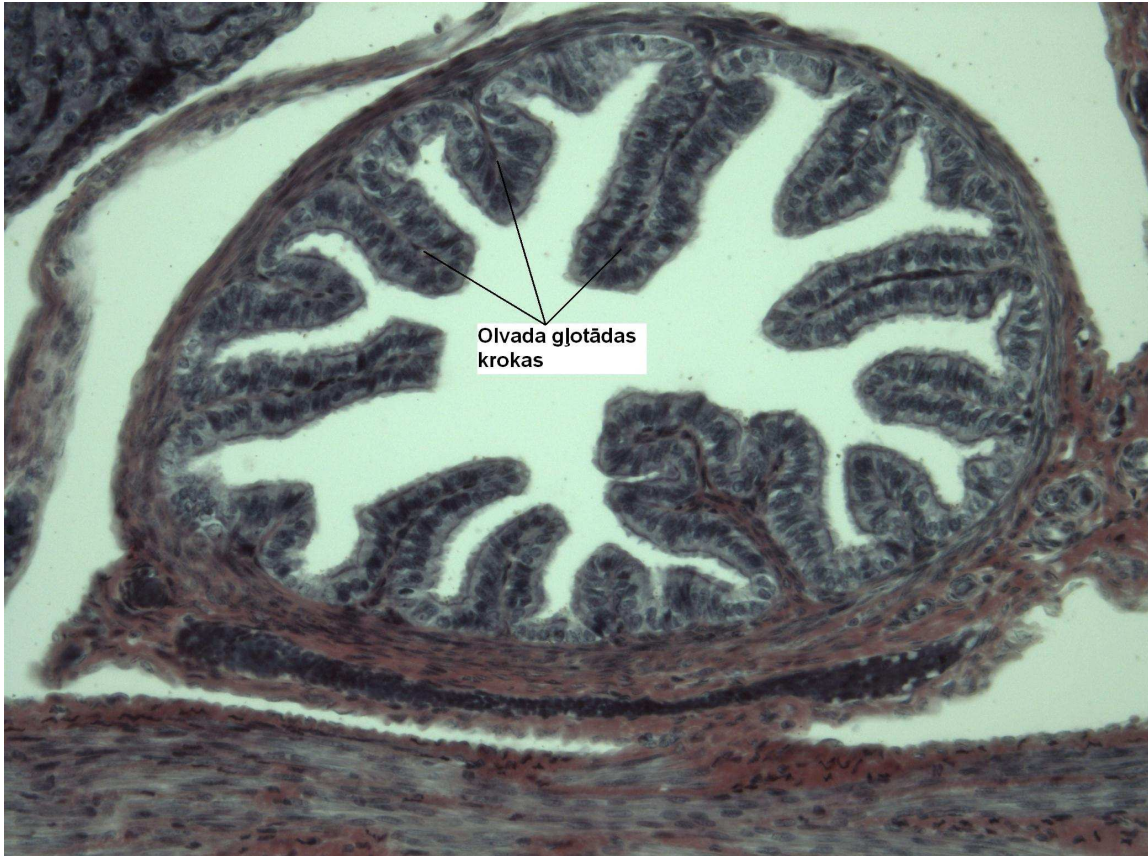
9. *Corpus albicans*



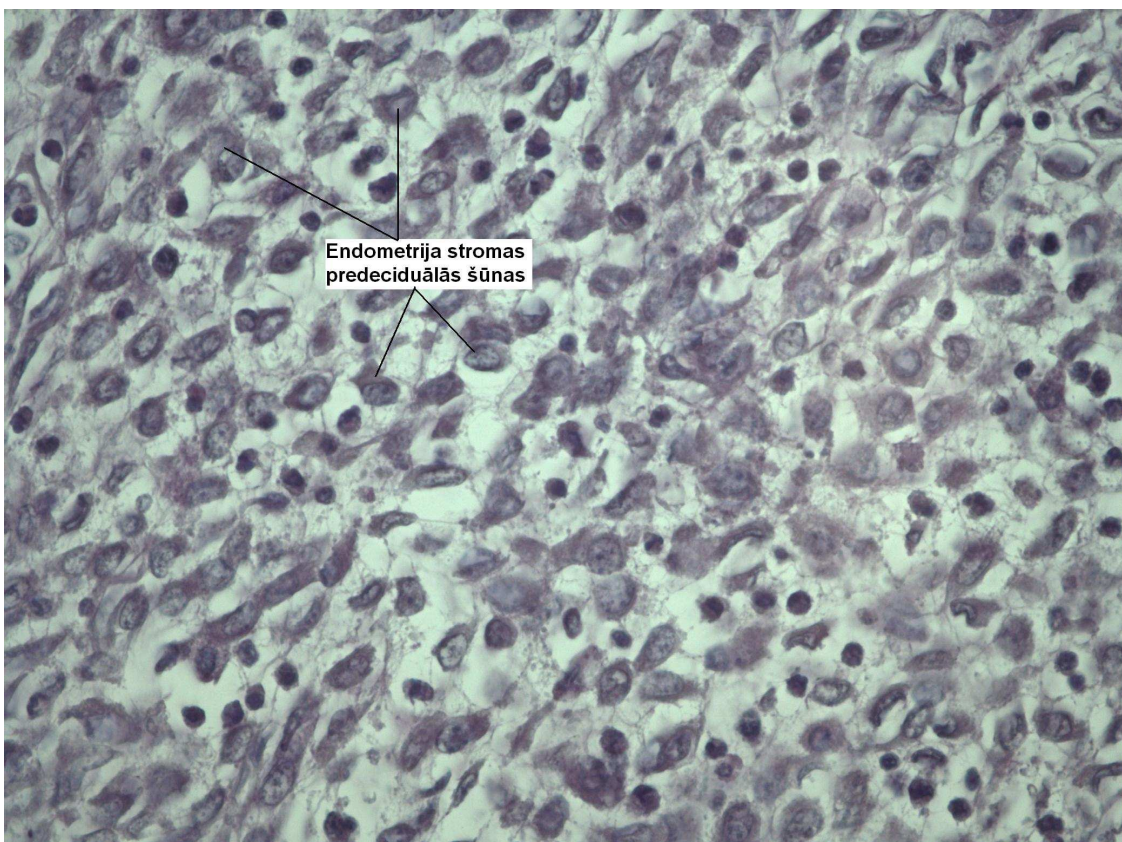
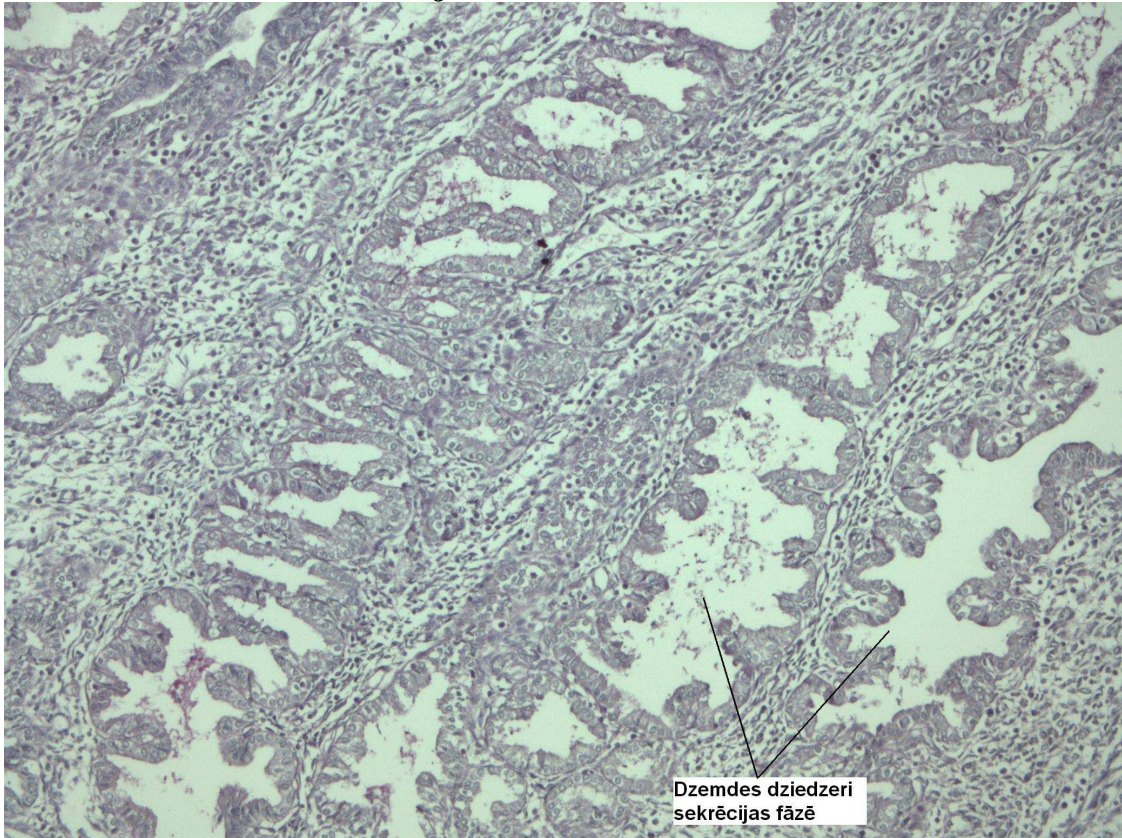
10. *Corpus atreticum fibroticum*



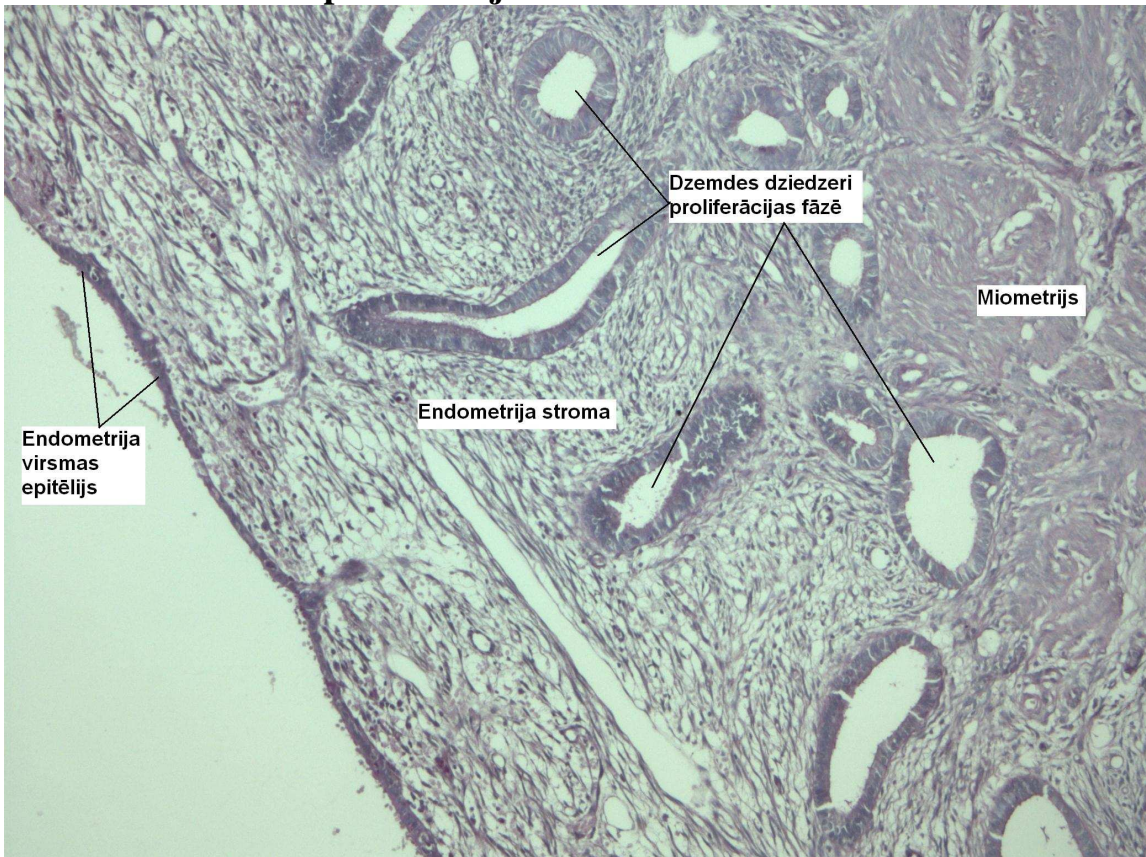
11. Olvads



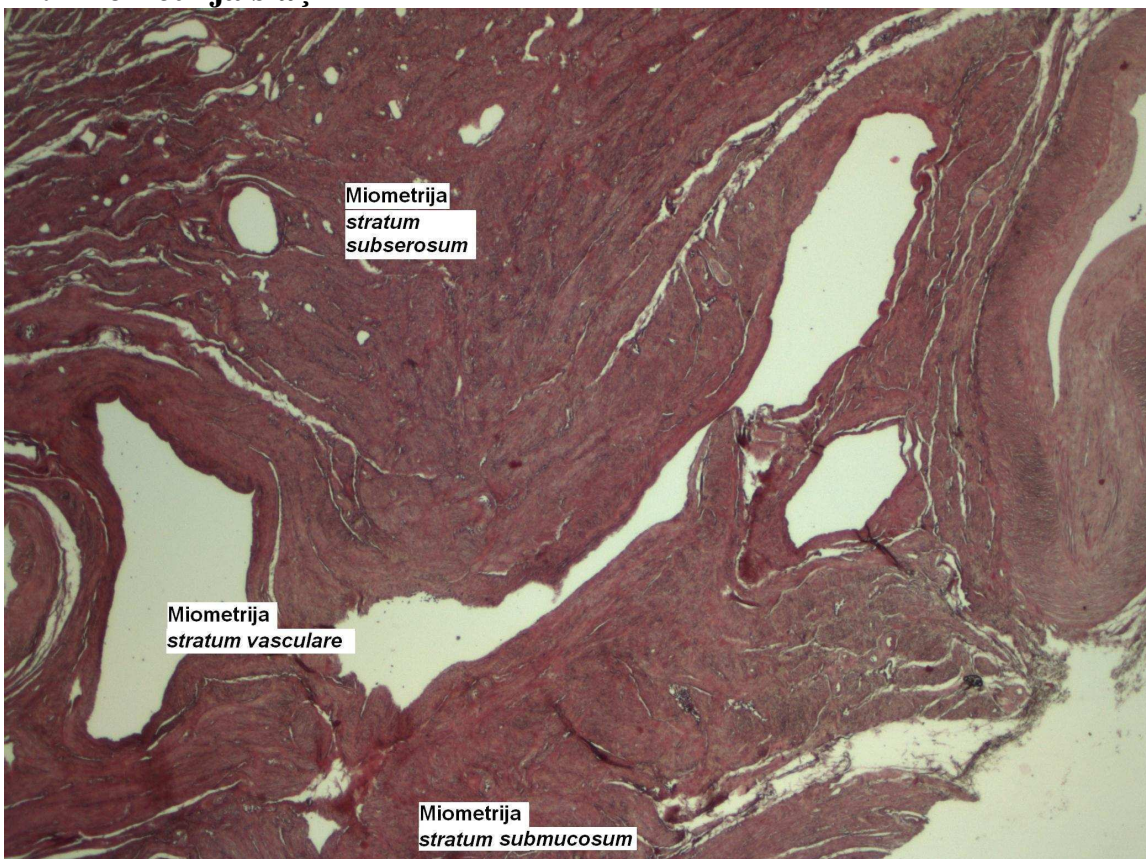
12. Cilvēka dzemde sekrēcijas fāze.



13. Cilvēka dzemde proliferācijas fāze.



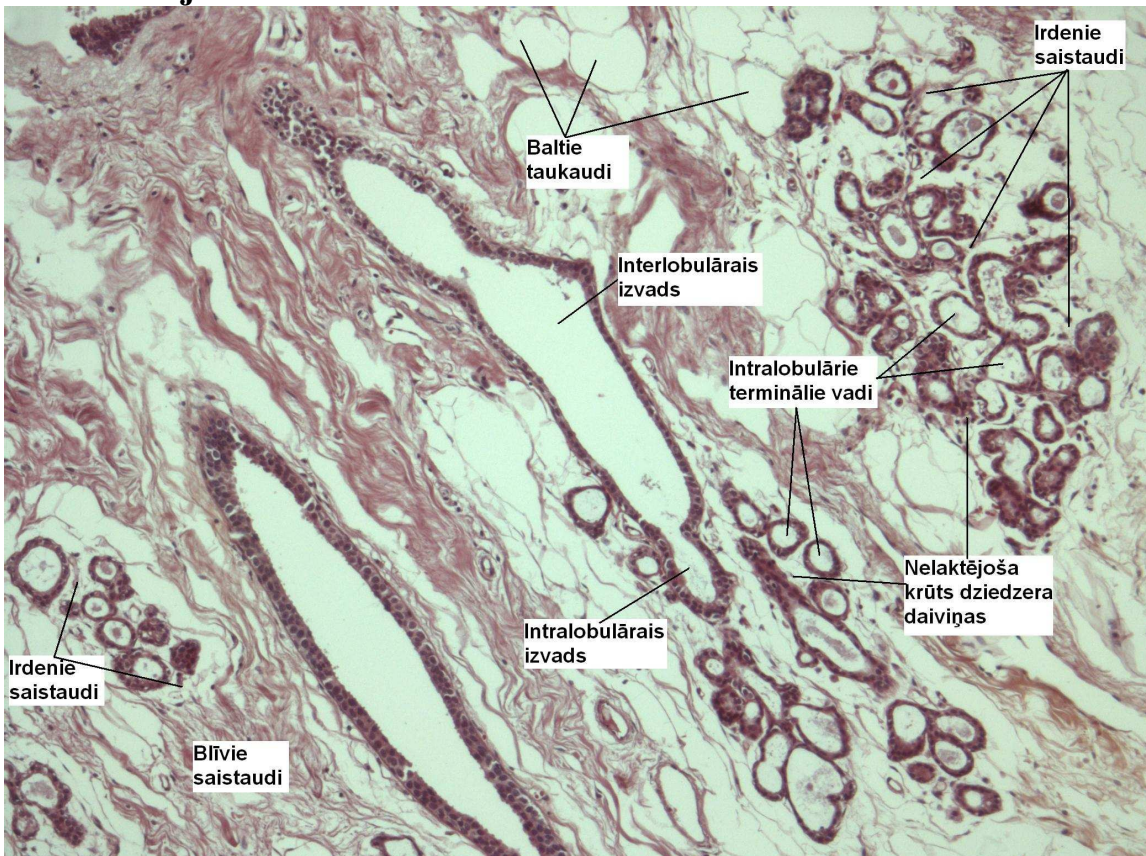
14. Miometrija slāņi



15. Dzemes kakls



16. Nelaktējošs krūts dziedzeris.



17. Laktējošs krūts dziedzeris.



