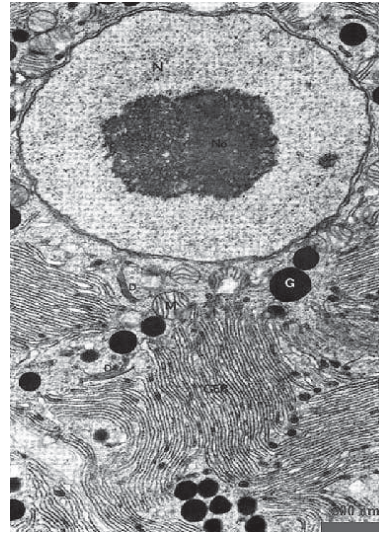


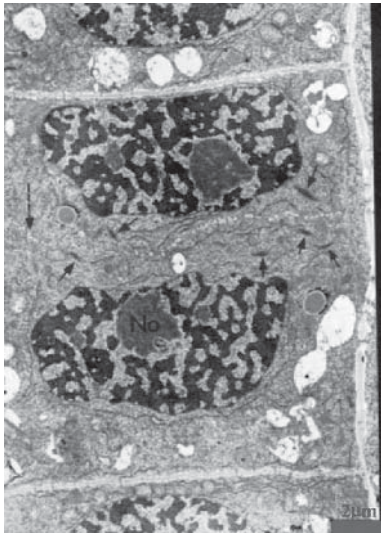
B\_11\_DD\_01\_VM1\_01-aug-shuna.jpeg



B\_11\_DD\_01\_VM1\_02-dz-shuna.jpeg



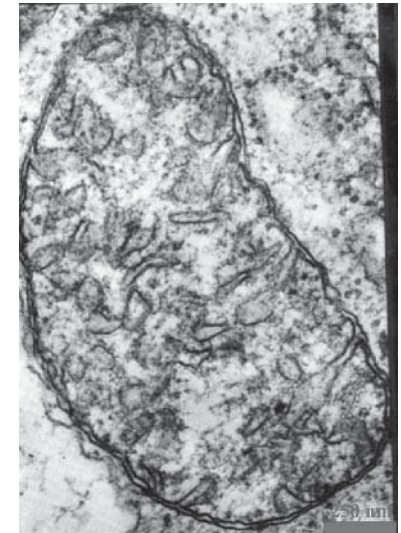
B\_11\_DD\_01\_VM1\_03-kodols-asinshunaa.jpeg



B\_11\_DD\_01\_VM1\_04-kodols-augu-shunaa.jpeg

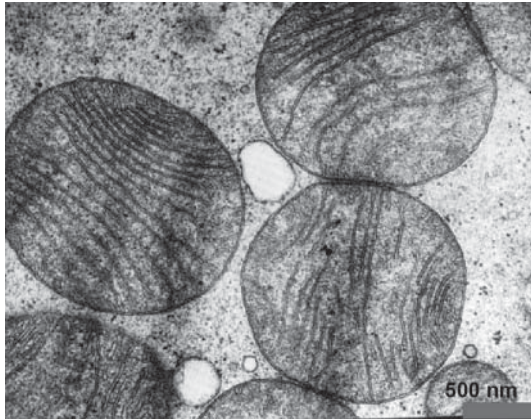


B\_11\_DD\_01\_VM1\_05-kodols-SN

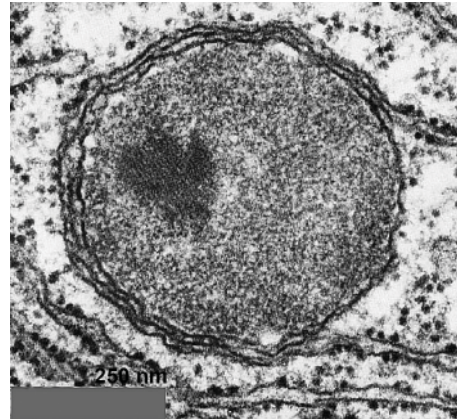


B\_11\_DD\_01\_VM1\_06-mitohondrijs.jpeg

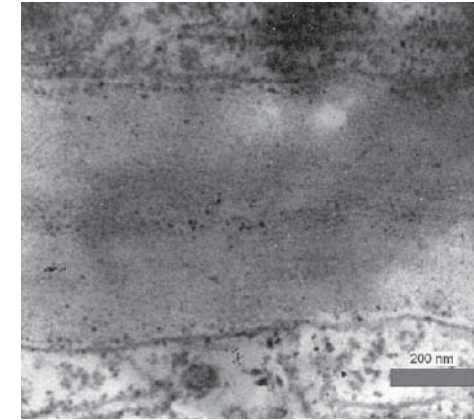




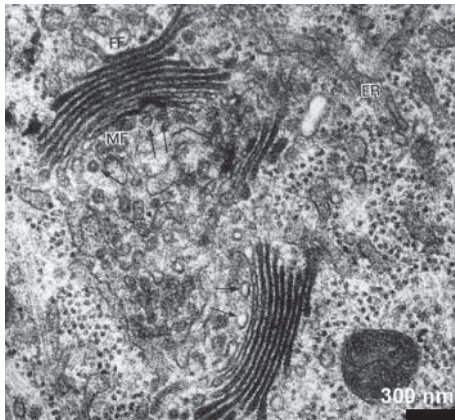
B\_11\_DD\_01\_VM1\_07-mitohonfrijī.jpeg



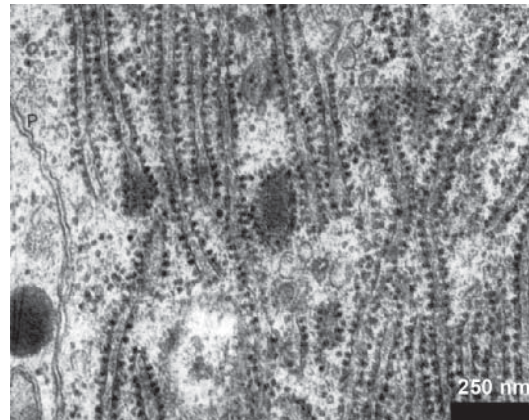
B\_11\_DD\_01\_VM1\_08-peroksisoma



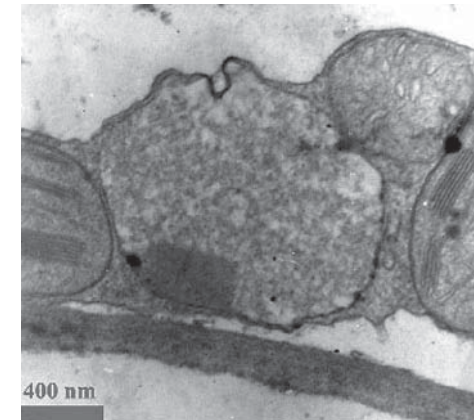
B\_11\_DD\_01\_VM1\_09-shunapvalks



B\_11\_DD\_01\_VM1\_10-Golgi



B\_11\_DD\_01\_VM1\_11-graudainais-ET



B\_11\_DD\_01\_VM1\_12-peroksisoma