

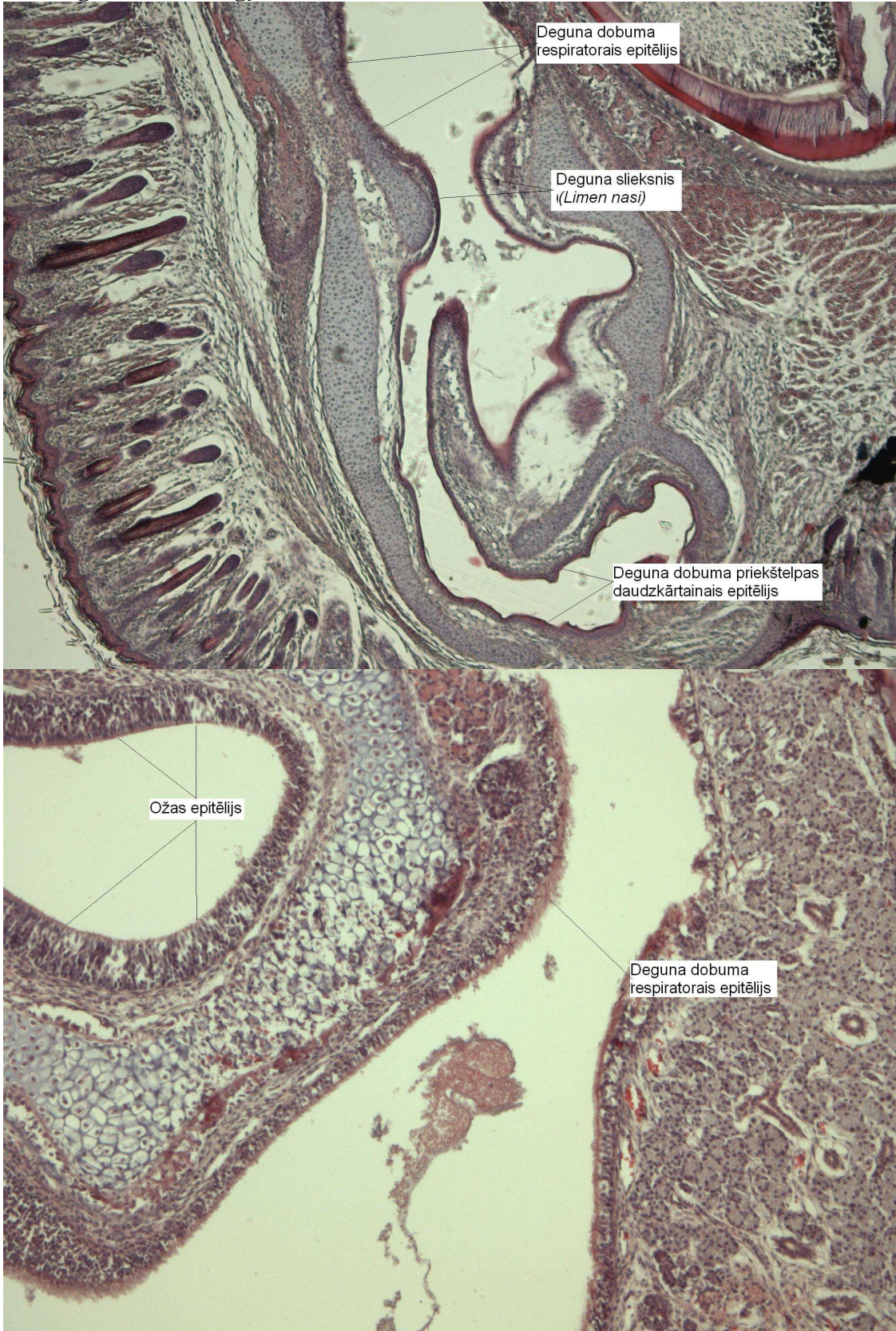
Speciālās histoloģijas kurss

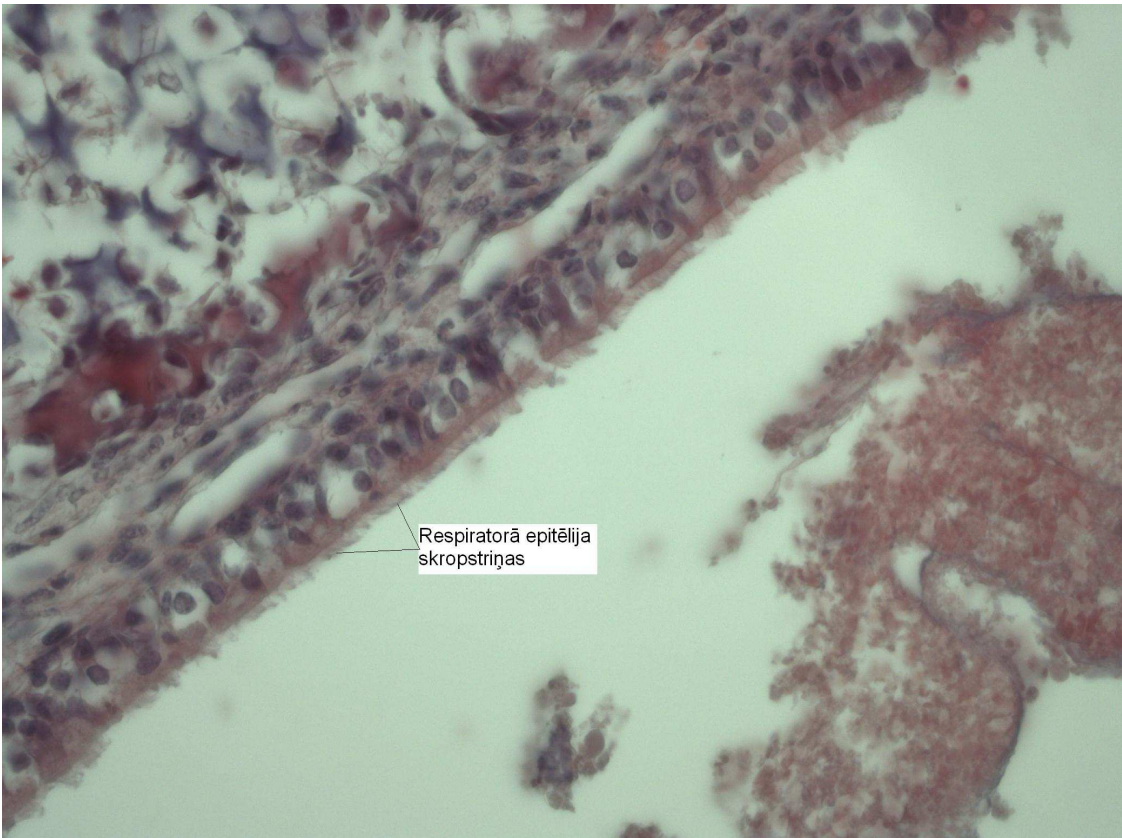
Laboratorijas darbos izmantoto preparātu attēlu atlants

Rīga 2011.

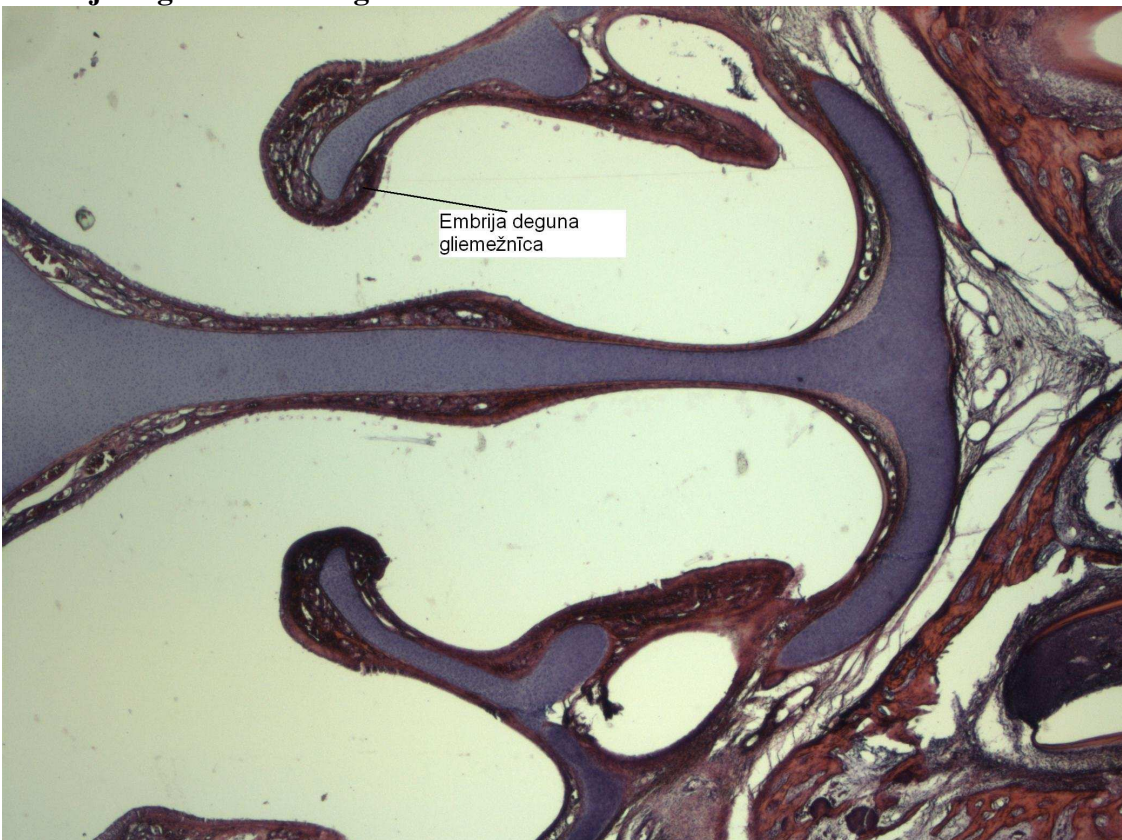
6. nodarbība Elpošanas sistēma.

1. – Deguna dobuma gļotāda.

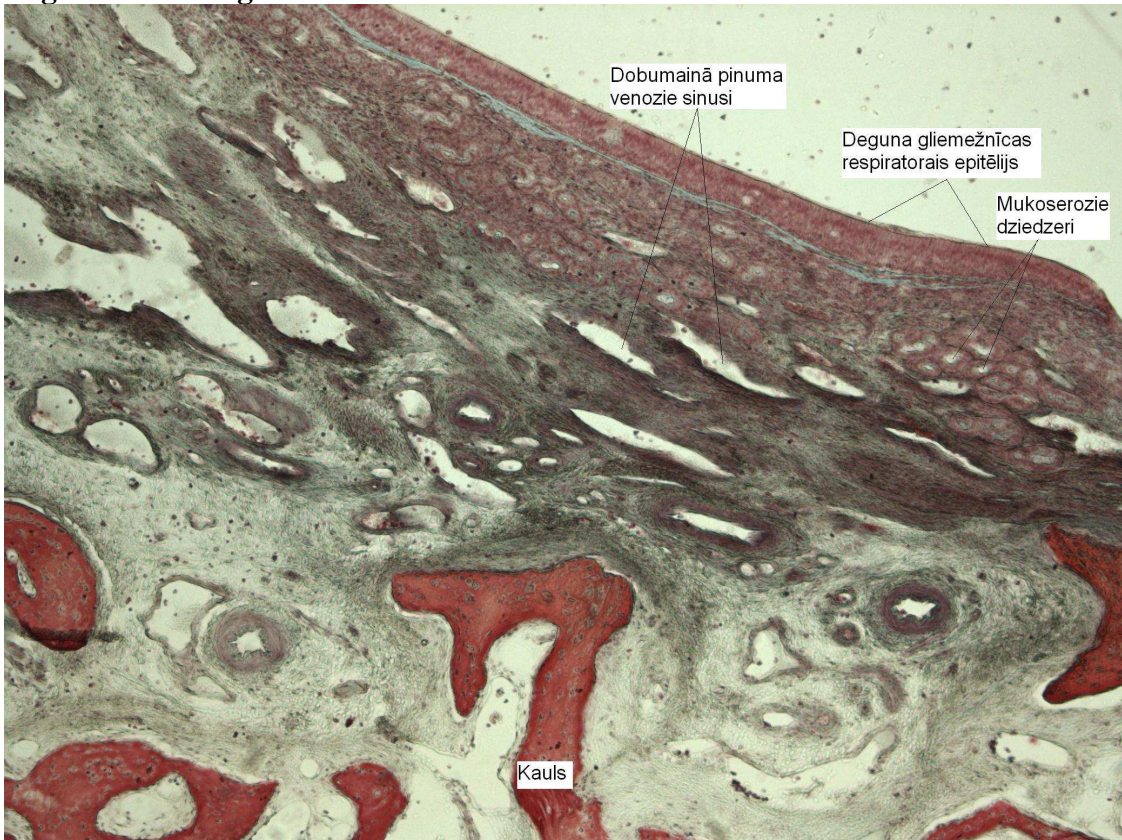




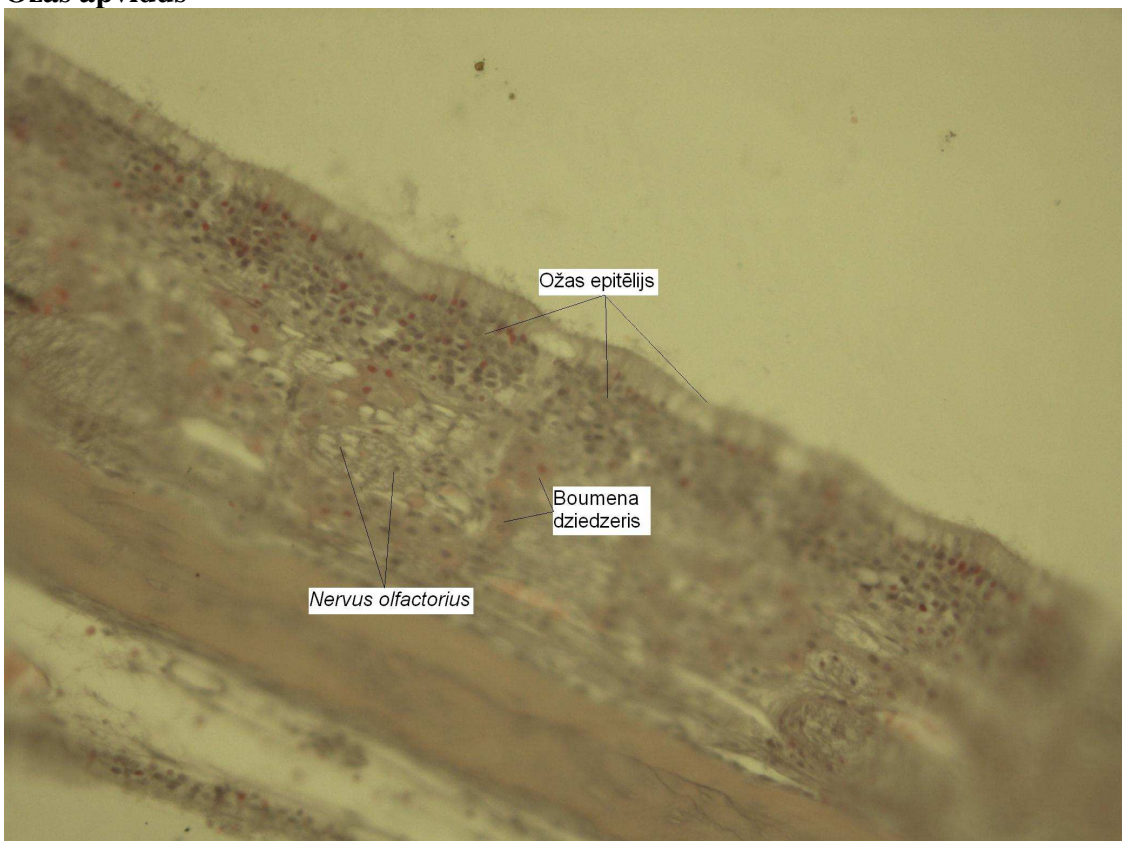
Embrija deguna dobuma gliemežnīca



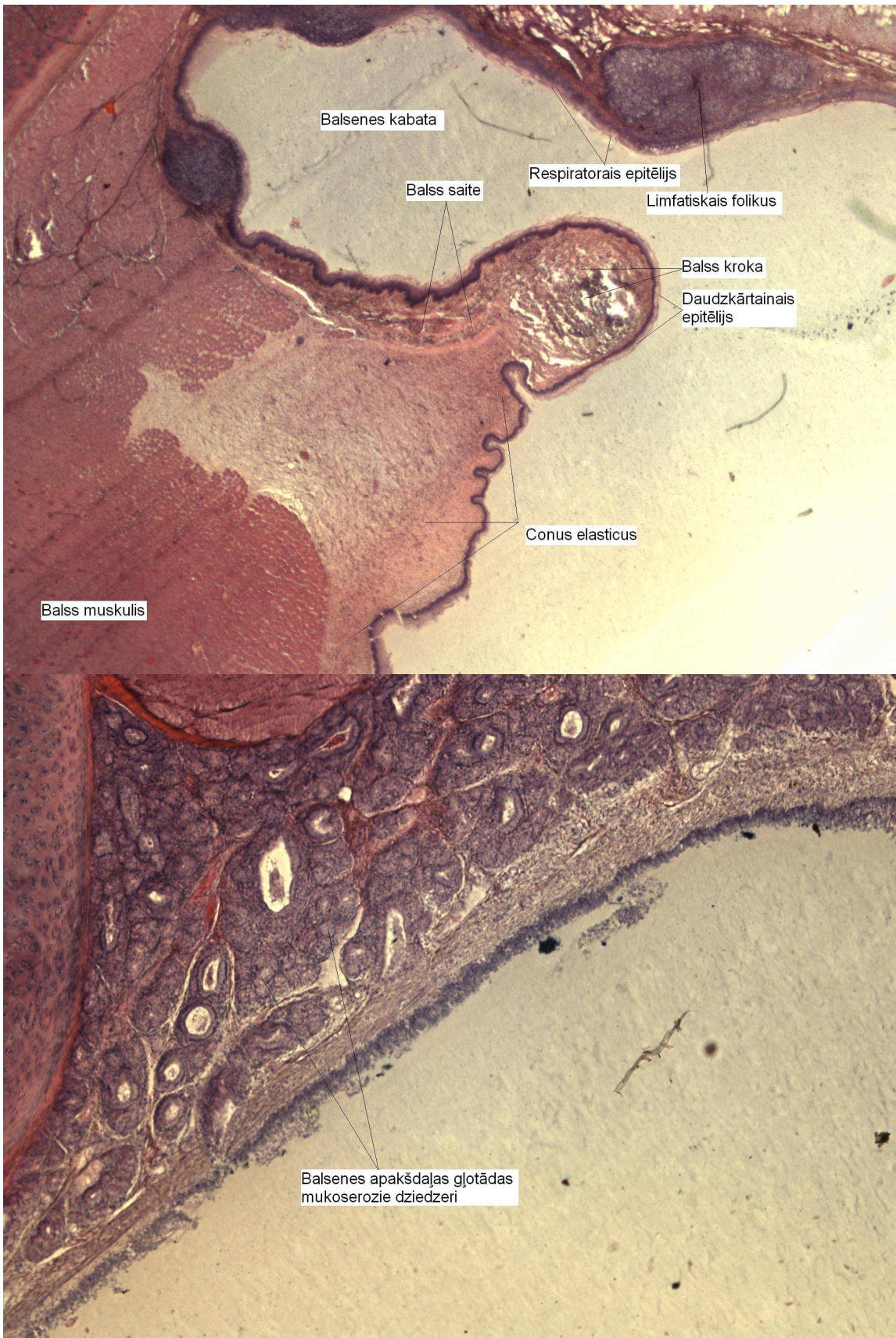
Deguna dobuma gliemežnīca

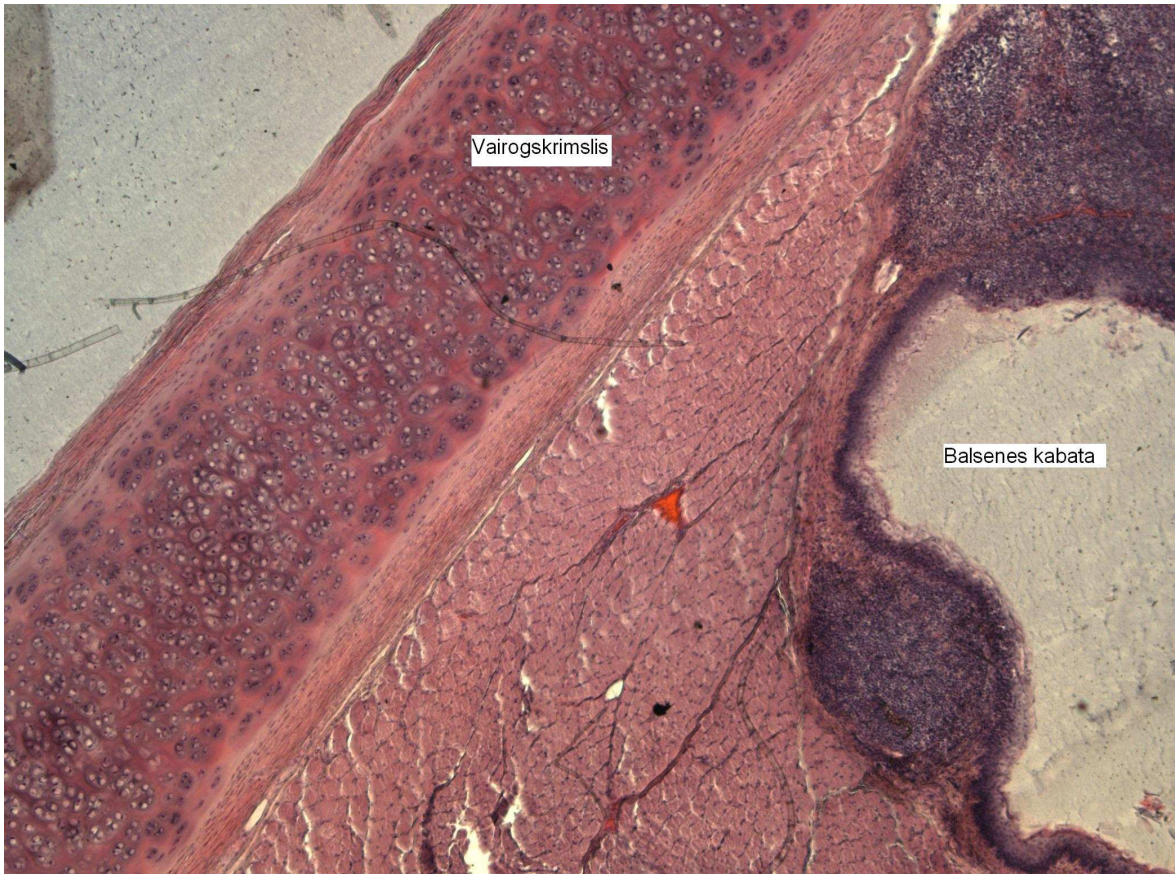


Ožas apvidus



2. Balsene

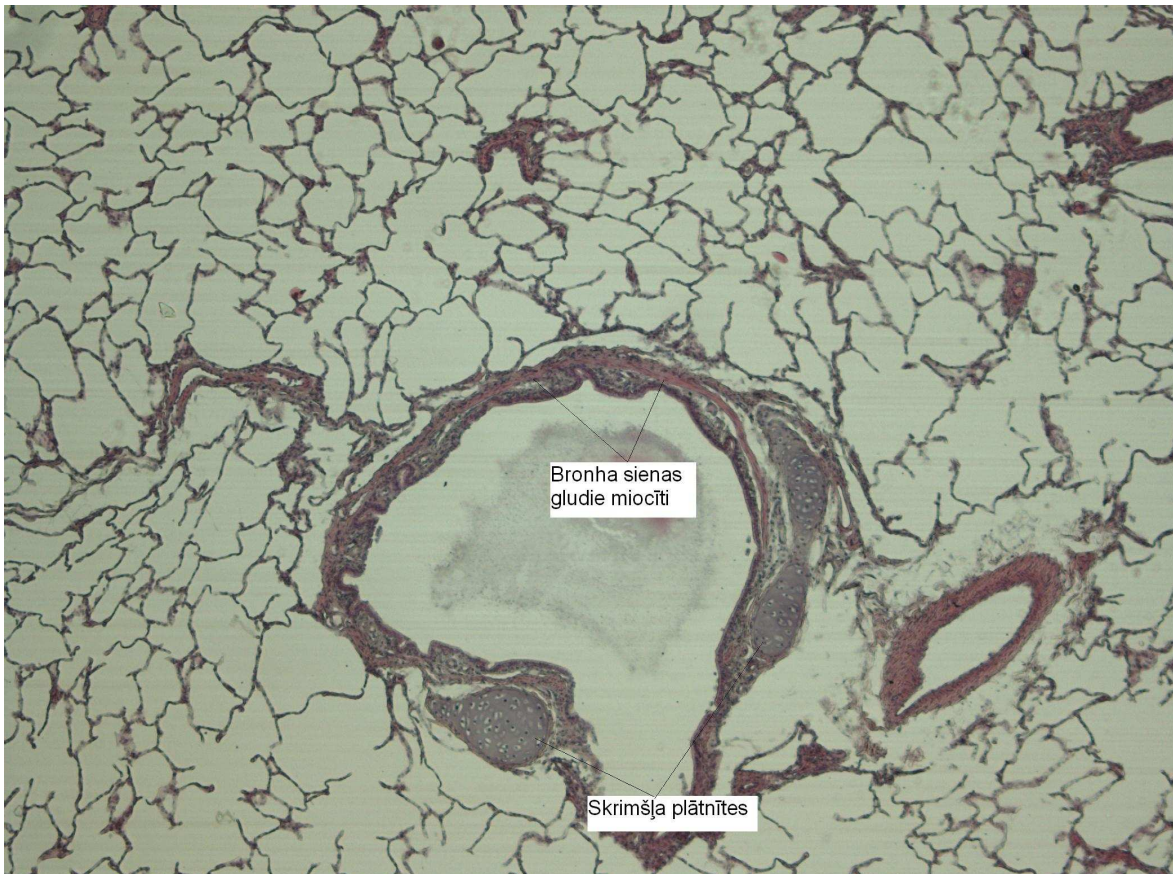


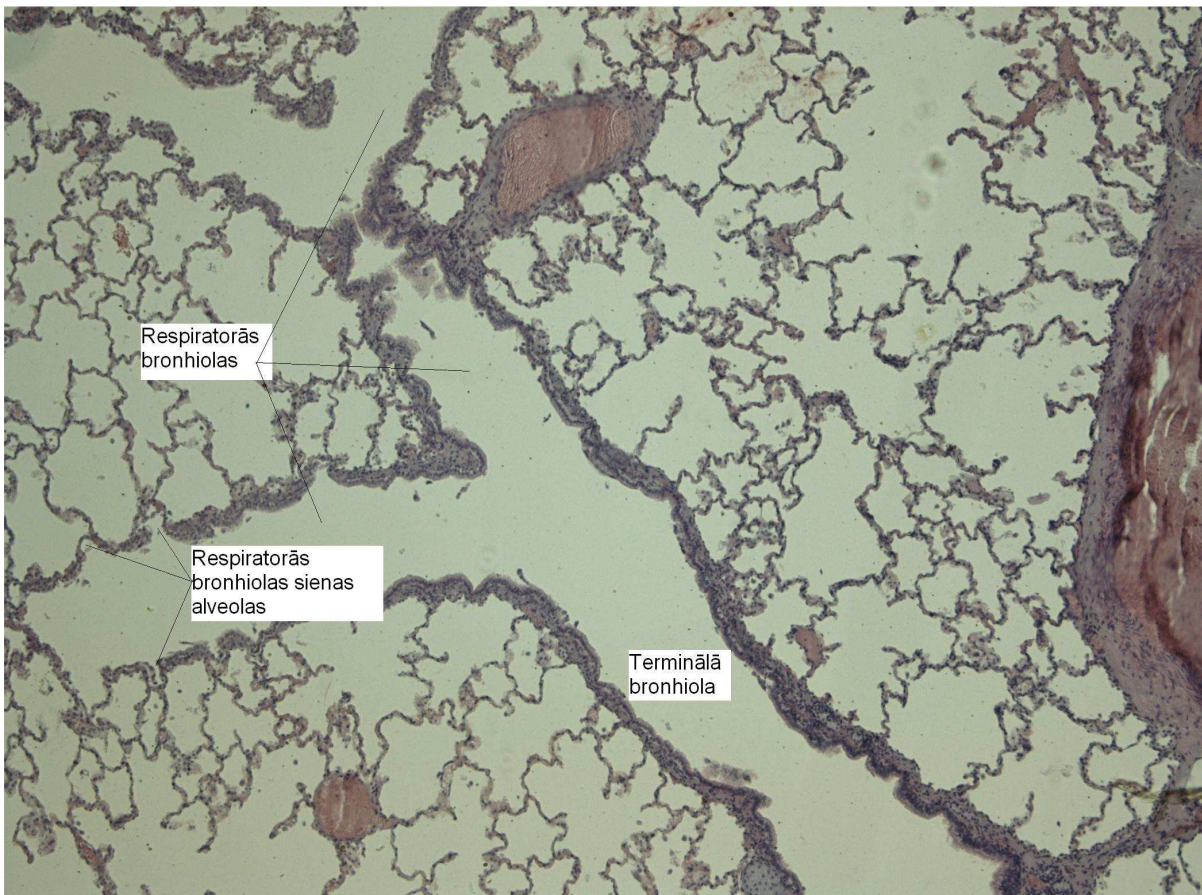
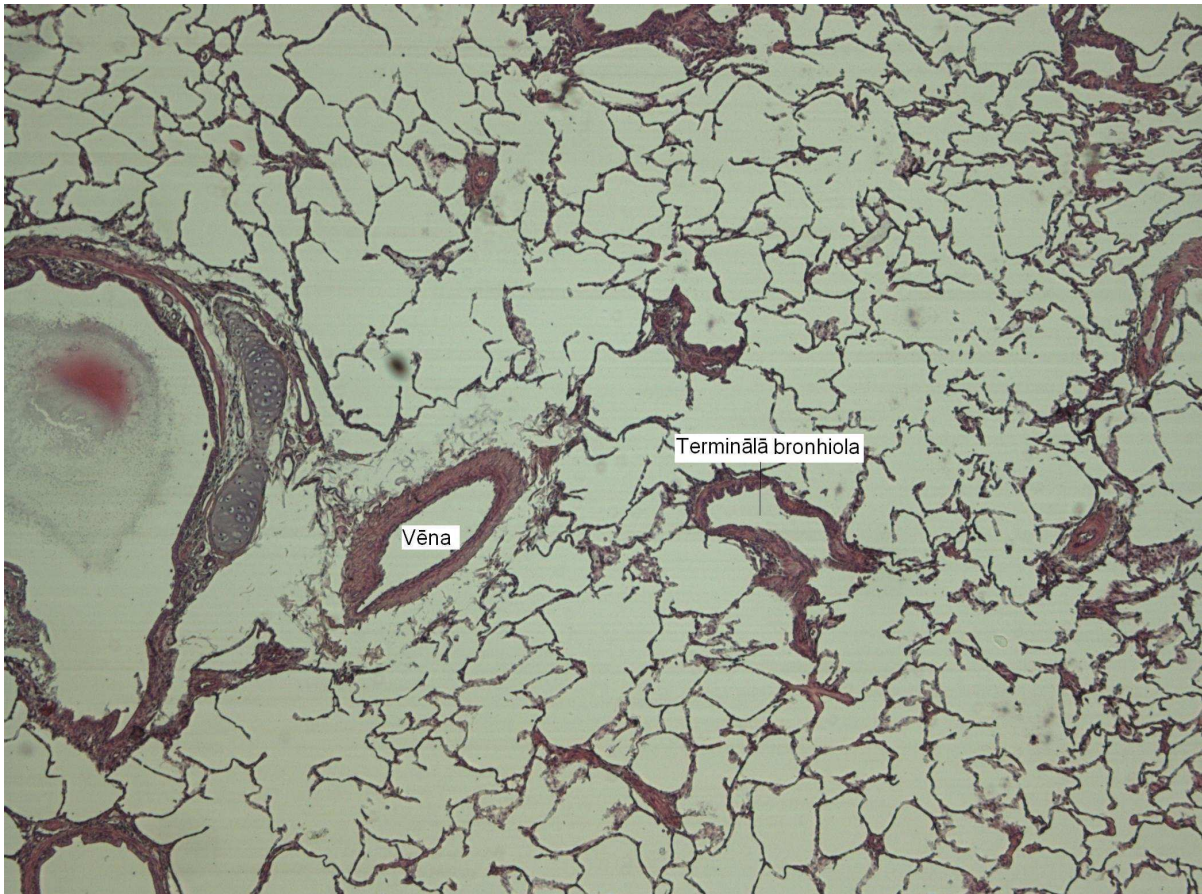


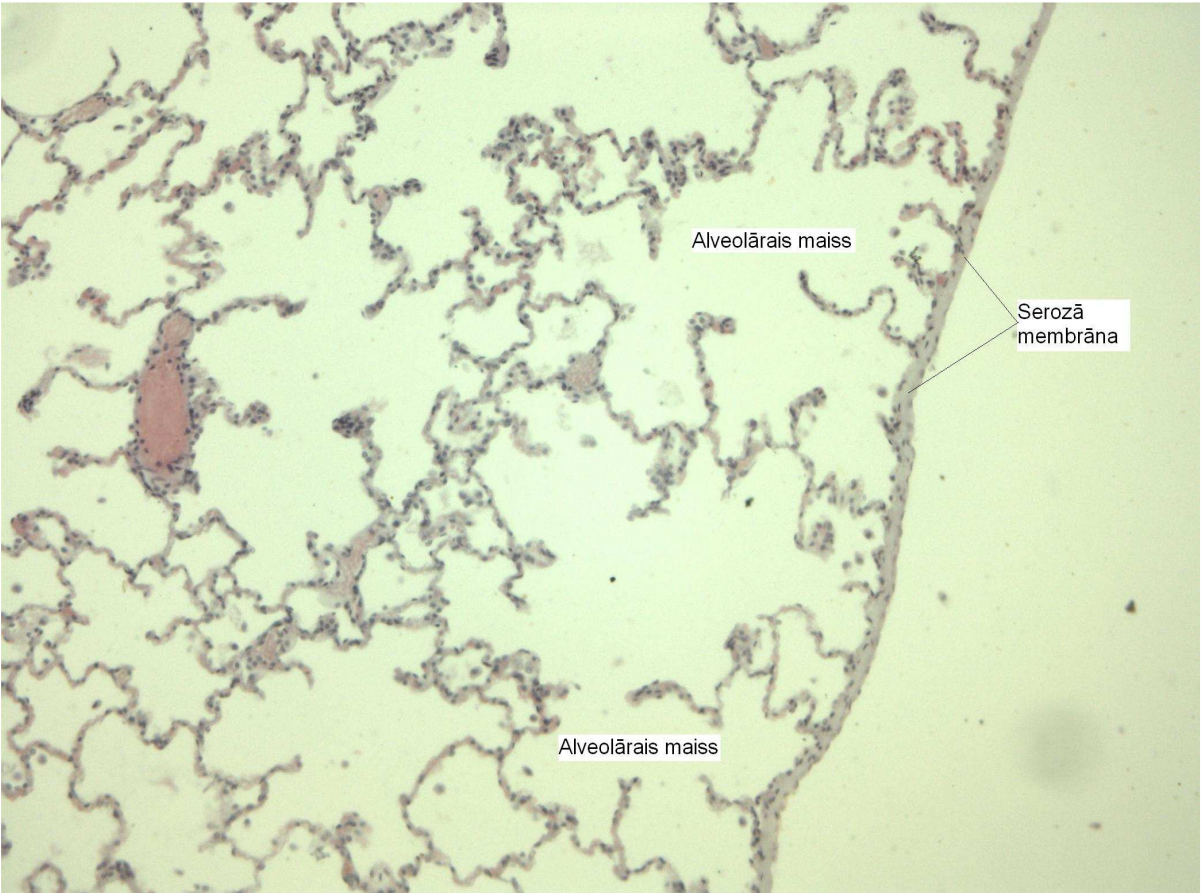
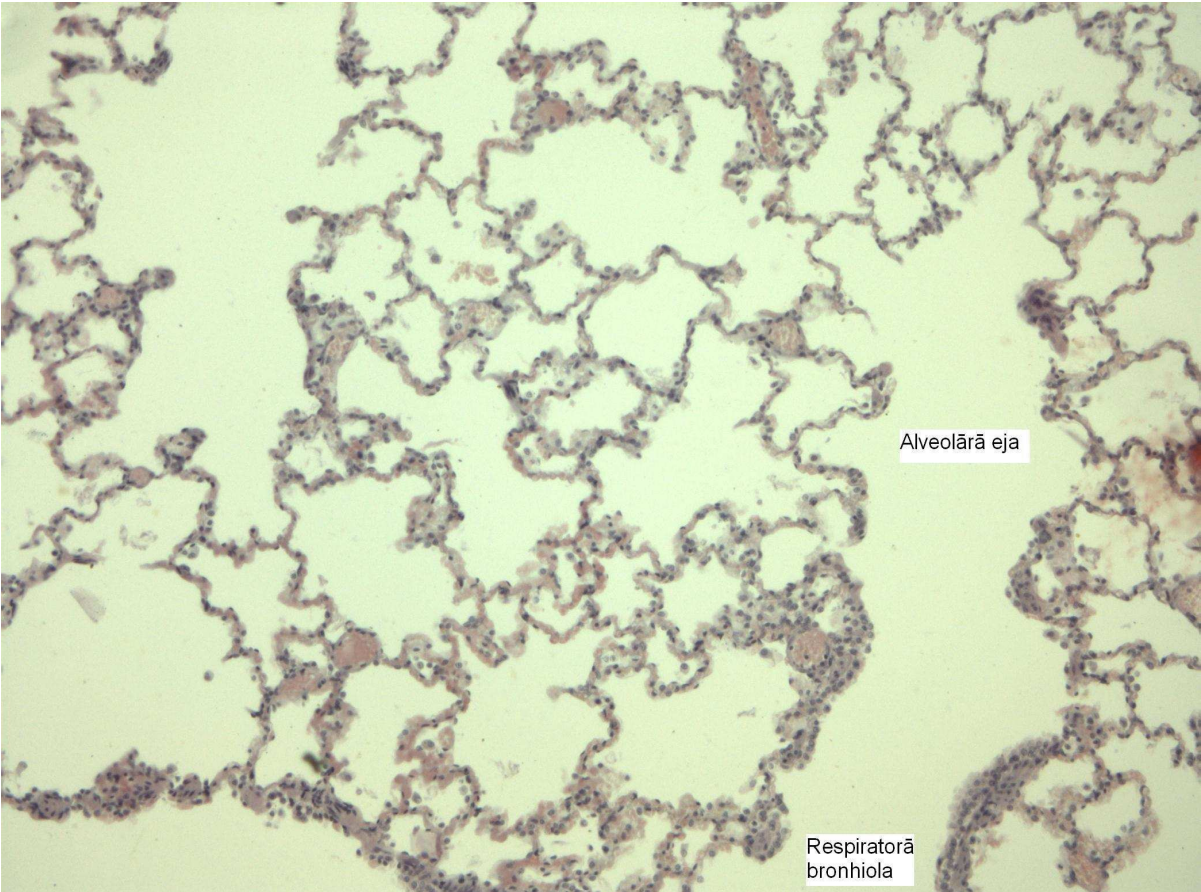
3. Trahejas

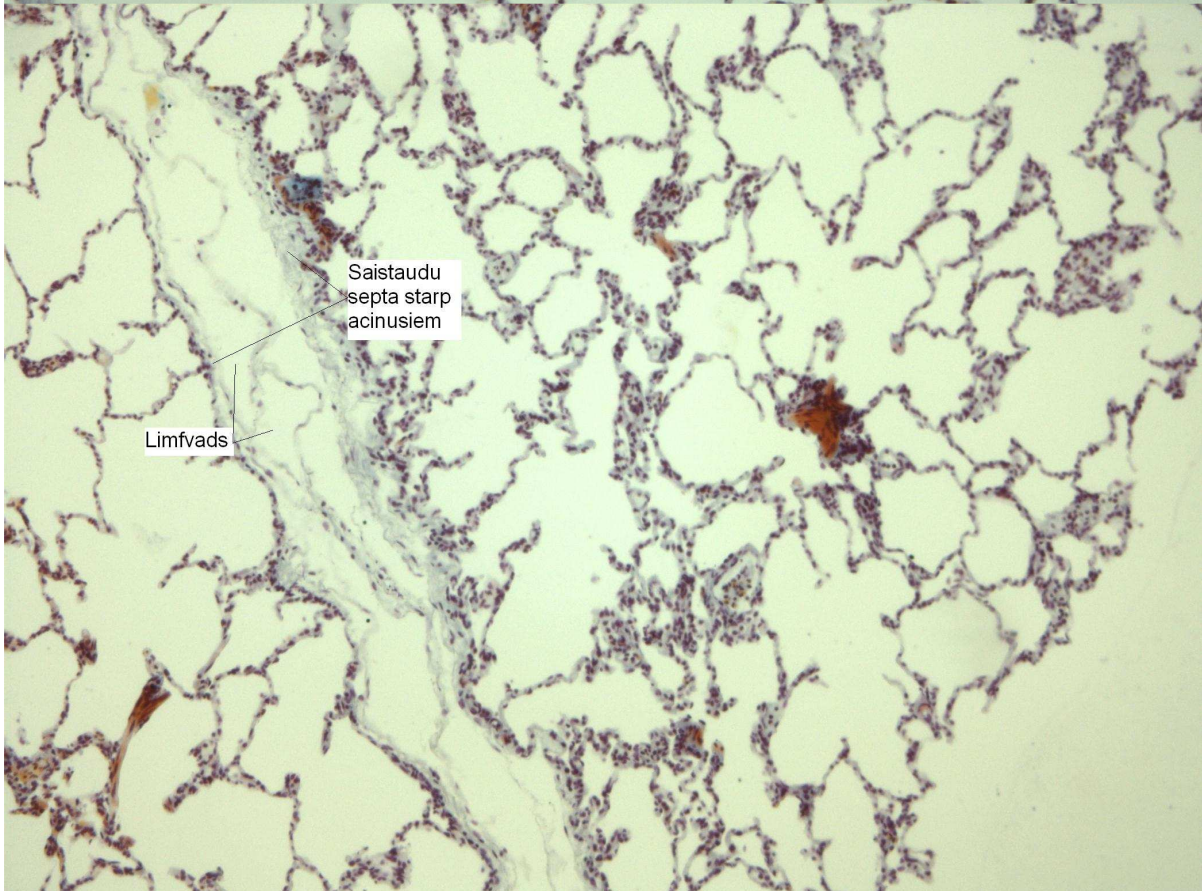
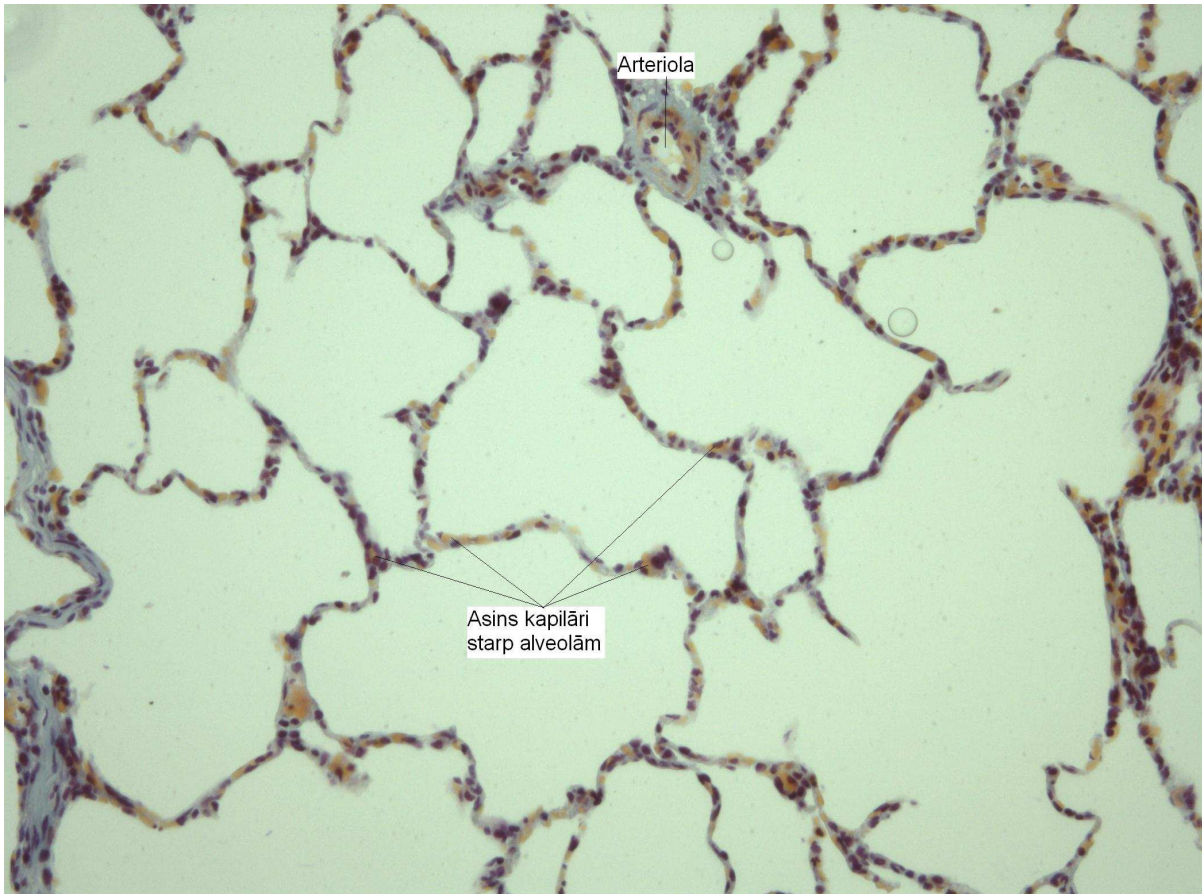


4. Plaušas

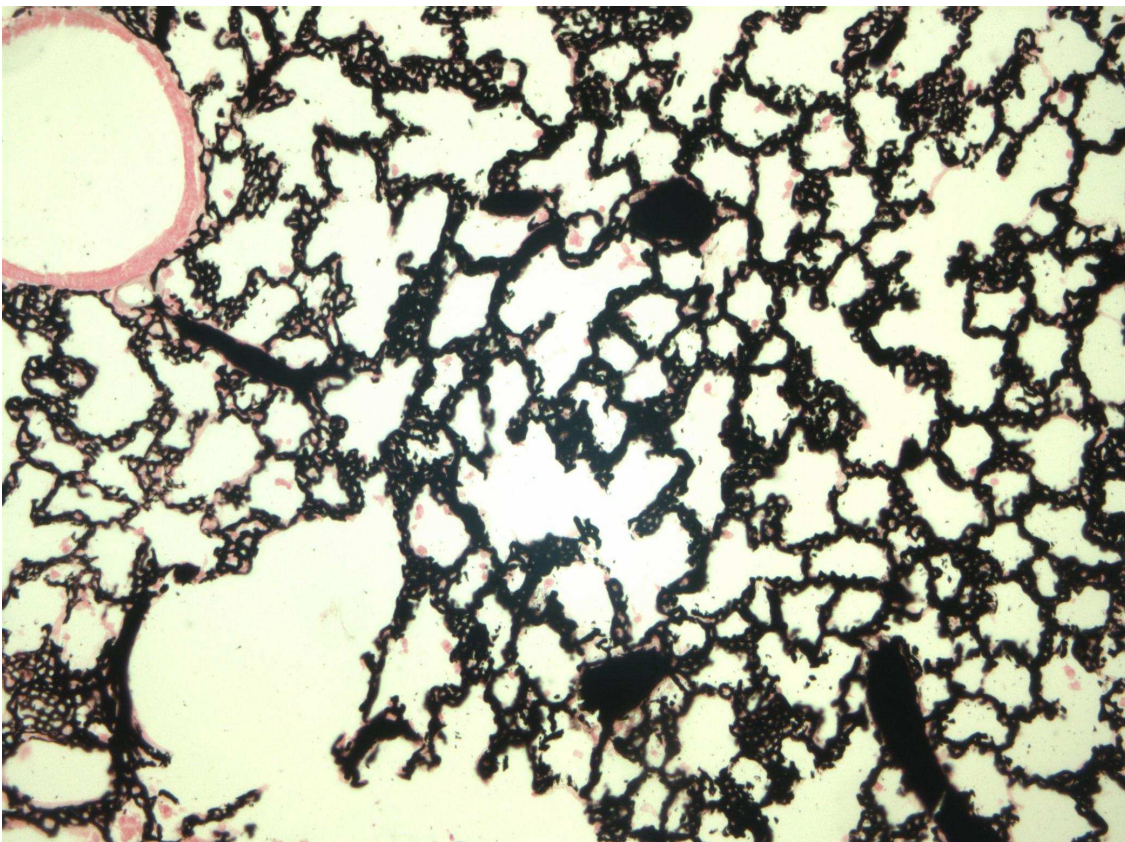
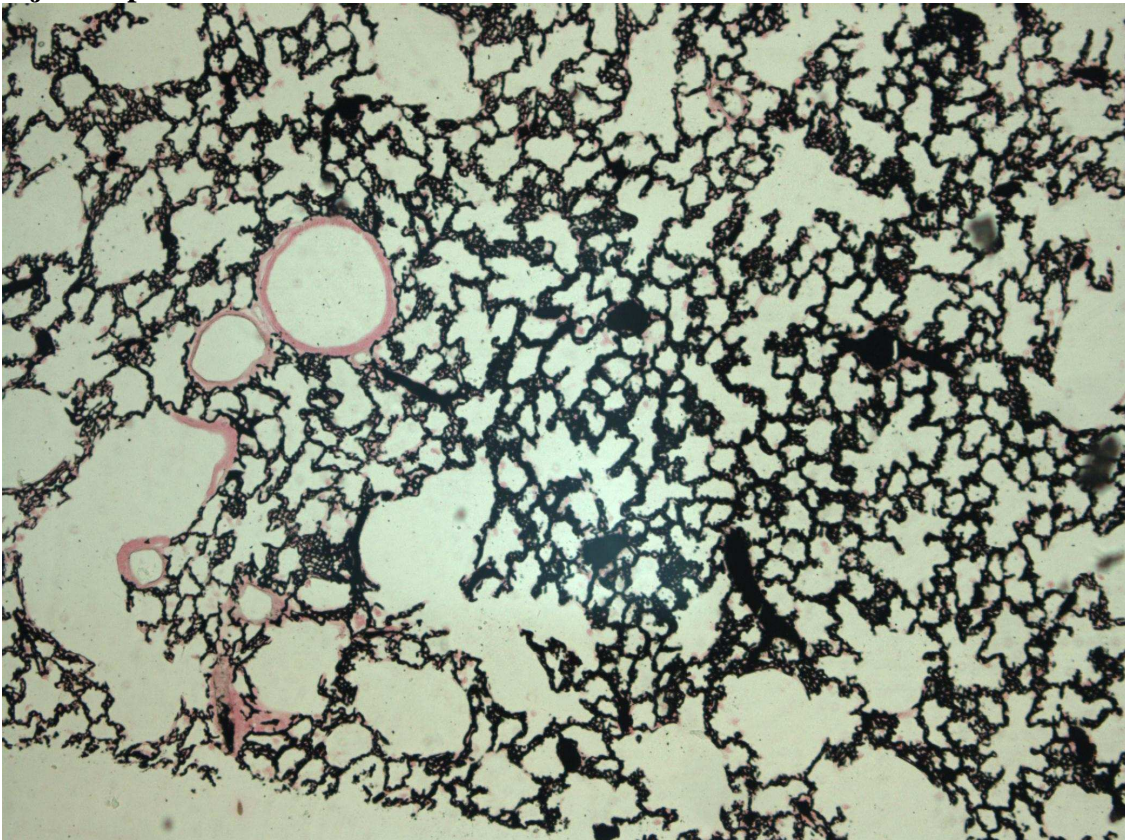




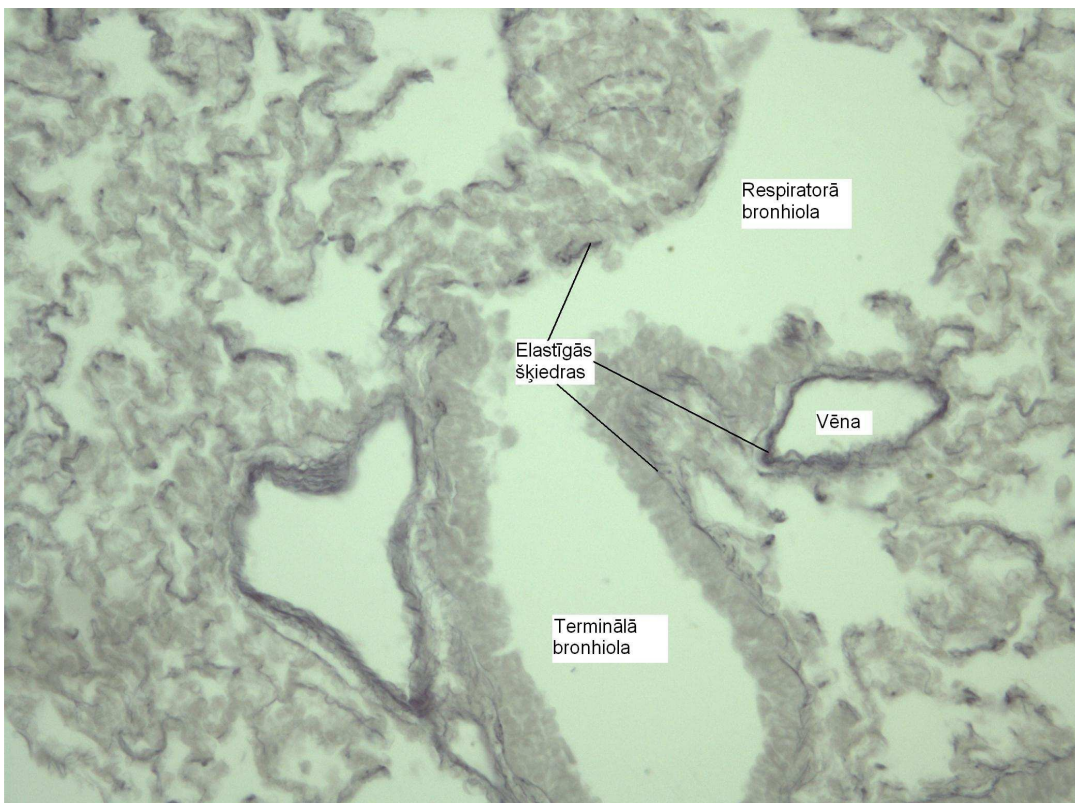
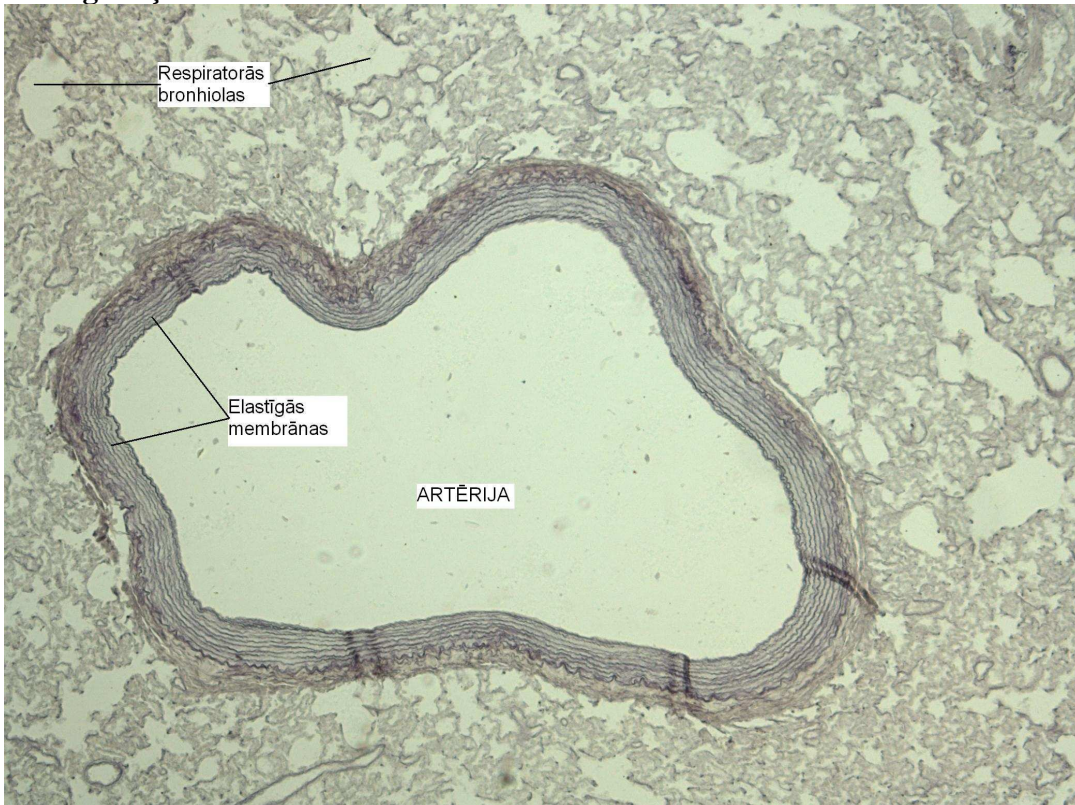




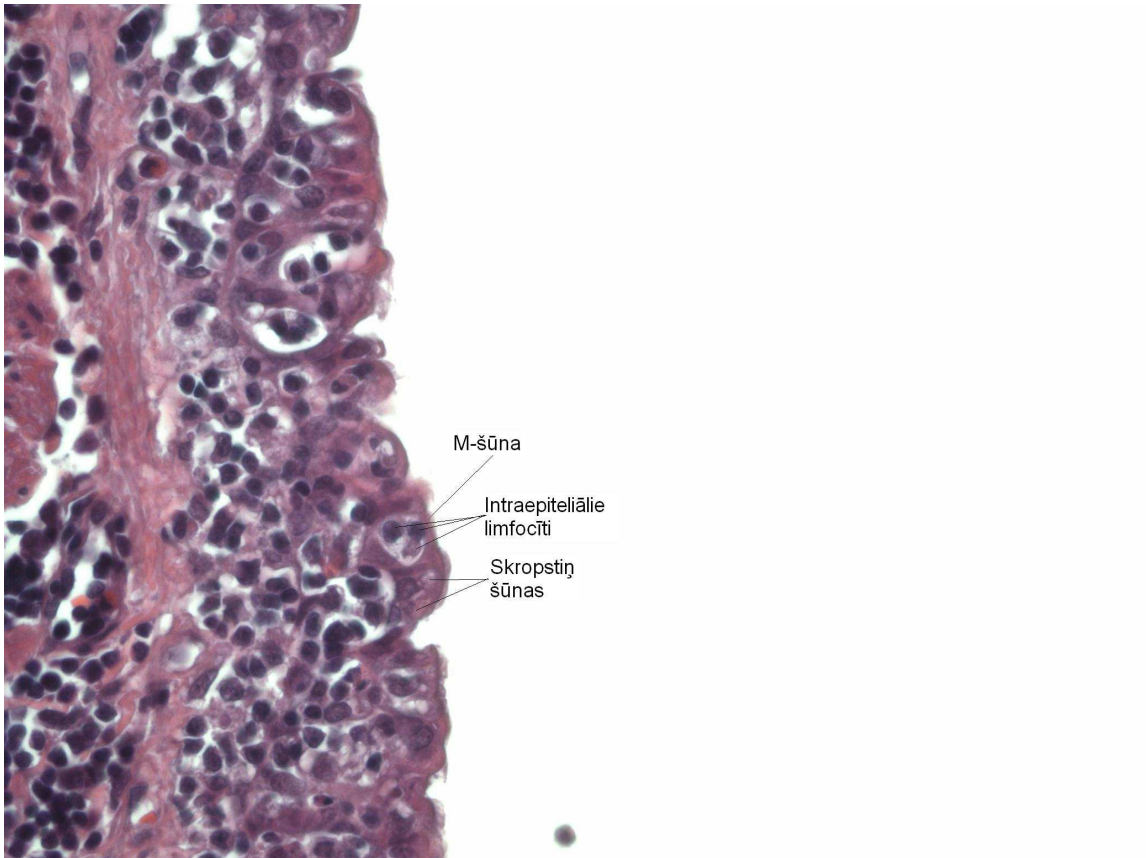
Demonstrējamie preparāti.
Injicētas plaušas



Elastīgās šķiedras



M šūnas



Klara šūnas

