

REVIEW

Open Access



# African swine fever: a global view of the current challenge

Ma Carmen Gallardo<sup>1,2</sup>, Ana de la Torre Reoyo<sup>2,3</sup>, Jovita Fernández-Pinero<sup>1,2</sup>, Irene Iglesias<sup>3</sup>, Ma Jesús Muñoz<sup>2,3</sup> and Ma Luisa Arias<sup>1,2\*</sup>

## Abstract

African Swine Fever (ASF) is an important contagious haemorrhagic viral disease affecting swine whose notification is mandatory due to its high mortality rates and the great sanitary and socioeconomic impact it has on international trade in animal and swine products.

This disease only affects porcine species, both wild and domestic, and produces a variety of clinical signs such as fever and functional disorders of the digestive and respiratory systems. Lesions are mainly characterized by congestive-haemorrhagic alterations. ASF epidemiology varies significantly between countries, regions and continents, since it depends on the characteristics of the virus in circulation, the presence of wild hosts and reservoirs, environmental conditions and human social behaviour. Furthermore, a specific host will not necessarily always play the same active role in the spread and maintenance of ASF in a particular area.

Currently, ASF is endemic in most sub-Saharan African countries where wild hosts and tick vectors (*Ornithodoros*) play an important role acting as biological reservoirs for the virus. In Europe, the disease has been endemic since 1978 on the island of Sardinia (Italy) and since 2007, when it was first reported in Georgia, in a number of Eastern European countries. It is also endemic in certain regions of the Russia Federation, where domestic pig and wild boar populations are widely affected. By contrast, in the affected eastern European Union (EU) countries where ASF is currently as epidemic, the on-going spread of the disease affects mainly wild boar populations located in restricted areas and, to a much less extent, domestic pigs. Unlike most livestock diseases, no vaccine or specific treatment is currently available for ASF. Therefore, disease control is mainly based on early detection and the application of strict sanitary and biosecurity measures. Epidemiology of ASF is very complex by the existence of different virus circulating, reservoirs and a number of scenarios, and the on-going spread of the disease through Africa and Europe. Survivor pigs can remain persistently infected for months which may contribute to virus transmission and thus the spread and maintenance of the disease, thereby complicating attempts to control it.

**Keywords:** African swine fever, Aetiology, Epidemiology, Clinical symptoms, Transmission, Diagnosis, Prevention, Control strategies

## Introduction

African swine fever (ASF) is one the most important of all swine diseases due to its significant sanitary and socioeconomic consequences. Infected animals show a wide variety of clinical forms and lesions that vary in terms of the virulence of the virus and the immunological characteristics of the host. Acute forms are predominant at the beginning of

outbreaks in disease-free areas resulting in high mortality rates of up to 95–100 %. Figure 1 Once established, the disease progresses towards its acute and subacute clinical forms that are sustained over time, although other clinical forms (chronic and subclinical or unapparent) will eventually evolve in regions where the disease is endemic.

European wild boar (*Sus scrofa*) and feral pigs are very susceptible to the disease and exhibit similar clinical signs and lethality to domestic pigs. By contrast, infected wild African Suidae develop subclinical and asymptomatic long term persistent infections, acting as virus reservoirs [1]. Figure 2 Soft ticks of the genus

\* Correspondence: [arias@inia.es](mailto:arias@inia.es)

<sup>1</sup>European Union Reference Laboratory (EURL) for African swine fever, INIA-CISA, 28130 Valdeolmos, Madrid, Spain

<sup>2</sup>FAO Reference Centre for African swine fever, INIA-CISA, Valdeolmos 28130 Madrid, Spain

Full list of author information is available at the end of the article



**Fig. 1** Clinical signs of acute form of ASF (source: EURL, INIA-CISA, Valdeolmos, Madrid, Spain). Pigs affected by acute form of ASF showing prostration and reddening of the skin at the tips of ears

*Ornithodoros* also act as biological vectors and reservoirs for the virus [2, 3].

ASF is endemic in most sub-Saharan countries. Since it was introduced in 2007 into Eastern Europe it has affected the Caucasus region and the Russia Federation, where it now exists as a large-scale epidemic in domestic pig and wild boar populations in two endemic zones in central and southern Russia [4, 5]. This situation, together with the recent incursions of the disease into the European Union (Fig. 3) and its complexity, underlines the need to clarify some of the important uncertainties regarding the epidemiology of ASF – for example, how the virus is transmitted and how virus-host interactions



**Fig. 2** Warthog (*Phacochoerus africanus*). *Phacochoerus* genera act as the reservoirs of the ASFV in Africa without clinical symptoms. Transmission and maintenance of ASFV can occur in a sylvatic cycle involving warthogs and bushpigs as well as ticks of the genus *Ornithodoros*

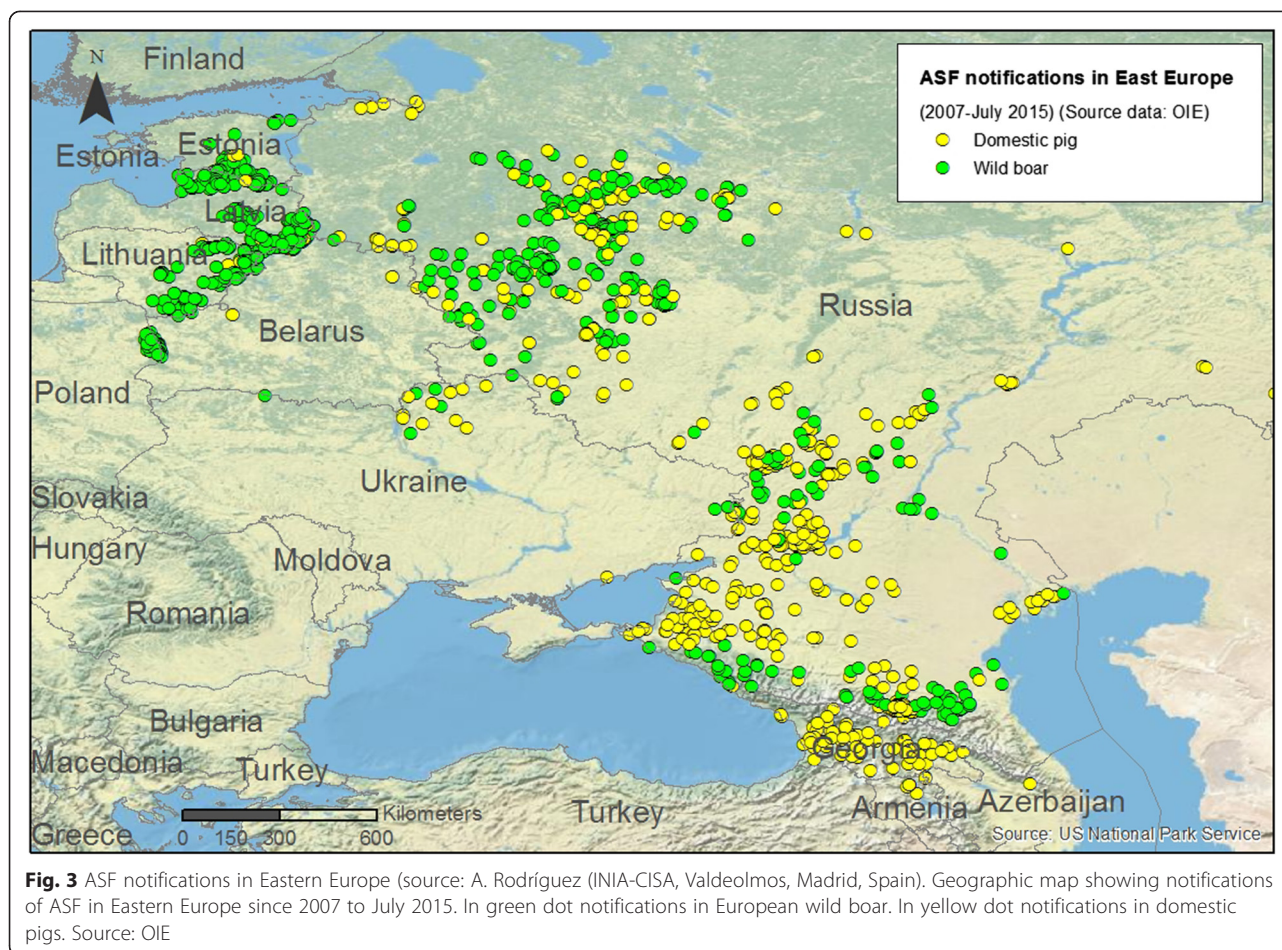
are established-in order to implement effective control-eradication strategies. The role of wild and domestic hosts in the different scenarios, the importance of environmental, social and cultural factors, and the part played by survivor pigs are just some of the important gaps in our knowledge that need urgently to be filled. The current situation of ASF in Africa and Europe is today a major threat to the pig industry worldwide.

### History

ASF was first detected in Kenya in 1909 following the introduction into the country of European domestic swine. It was reported as an acute haemorrhagic disease with mortality rates of 100 % in domestic pigs [6, 7]. It was then recognised that the disease had been present in eastern and southern Kenya in wild hosts for a very long time. Subsequently, it was detected in Central and West Africa but was confined to sub-Saharan African countries until it first reported outside Africa in 1957 in Lisbon (Portugal), from where it had spread from West Africa. After two years silence, in 1960 the disease appeared again in Lisbon and soon spread to the Iberian Peninsula and other countries in Europe such as France (1964), Italy (1967, 1969, 1983), Malta (1978), Belgium (1985) and the Netherlands (1986). Various countries in the Americas were also affected by ASF during this period: Cuba (1971, 1980), Brazil (1978), the Dominican Republic (1978) and Haiti (1979). In all these countries the disease has been successfully eradicated, the exception being the island of Sardinia (Italy) (Fig. 4).

### The virus

The causative agent of the disease, the ASF virus (ASFV), is the only member of the Asfviridae family, genus *Asfivirus* [8] (Fig. 5). It is a complex enveloped virus with icosahedral morphology consisting of four concentric layers and a large double-stranded DNA molecule that ranges in length between isolates from about 170 to 193 kbp [9]. It contains a conserved central region of about 125 kb and two variable ends. The differences in genome length are largely due to the gain or loss of members of the multigene families (MGF) located in the left and right variable regions [9]. A full genome sequencing of up to 16 virus isolates has recently been completed [10–14]. The ASF viral DNA contains between 151 and 167 open reading frames (ORFs) encoding 54 structural proteins and around 100 polypeptides in the targeted infected cells, monocytes and macrophages [15, 16]. The major components of the viral capsid, the protein p72, the two structural proteins p30 (p32) and p54 and the polyprotein pp62, have been identified as the most antigenic of the proteins that are responsible for the induction of antibodies after a natural infection [17, 18]. However, despite the usefulness of



these proteins as sero-diagnostic targets, they are not sufficient for developing antibody-mediated protection against virus strains [19].

#### Inactivation of ASFV

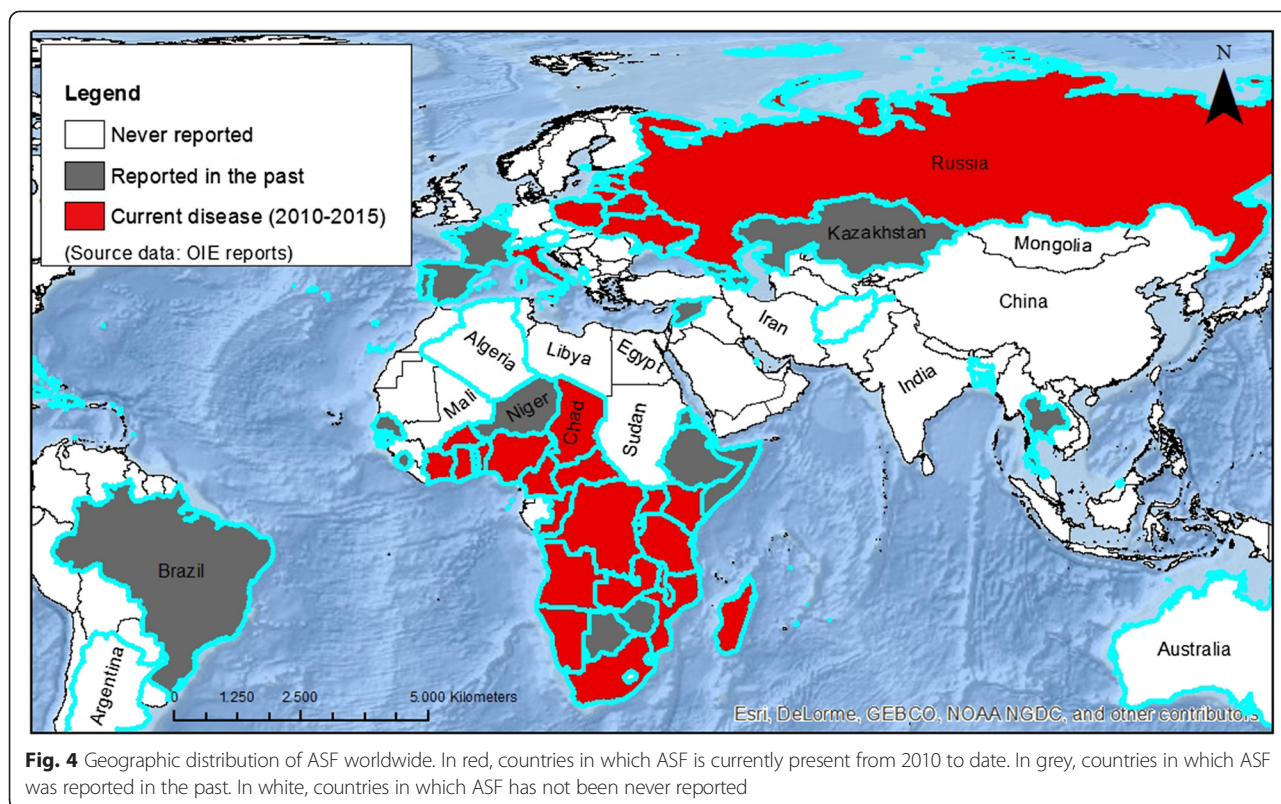
Although ASFV is very resistant to inactivation in the environment, many lipid solvents and commercial disinfectants based on phenolic and iodide compounds are effective and can inactivate the virus at  $\text{pH} < 4$  and  $\text{pH} > 11$  [20].

The virus may persist for several weeks or months in frozen, fresh or uncooked meat, as well as in salted dried meat products [20]. By contrast, ASFV is inactivated in cooked or canned hams when these products are heated to  $70^\circ\text{C}$  and in cured or processed products such as Spanish cured pork products (e.g. *serrano* and Iberian hams and shoulders) at day 122–140 of curing [21].

#### Virus genotyping

Recent studies have reported a classification of 32 ASFV isolates in eight different serogroups based on a hemadsorption inhibition assay (HAI) with ASFV reference immune antisera [22].

However, despite conventional ASFV genotyping cannot discriminate between viruses of different virulence, it has been widely demonstrated throughout more than 10 years that the molecular characterization of small conserved regions of the DNA genome is the most useful tool for tracing the origin of ASFV during outbreaks [23–39]. The current approach is based on the analysis of the C-terminal end of gene *B646L* encoding the major protein p72 [39], following by the sequencing of the Central Variable Region (CVR) within the *B602L* gene, or other several regions (e.g. *E183L* encoding p54 protein, *CP204L* encoding p30 protein), for distinguishing between geographically and temporally constrained p72 genotype viruses [28–30, 33, 34, 36, 38]. This approach has allowed identifying twenty-two different p72 genotypes among virus isolates from East and South African countries to date, whereas genotype I is predominant in West Africa [35, 37]. Outside Africa, genotype I was the only one found in Europe, America, and the Caribbean, until the introduction of genotype II in 2007 into Georgia in 2007 from East Africa (Fig. 6) [33]. Current available molecular data derived by using standardized genotyping procedures have indicated the presence of

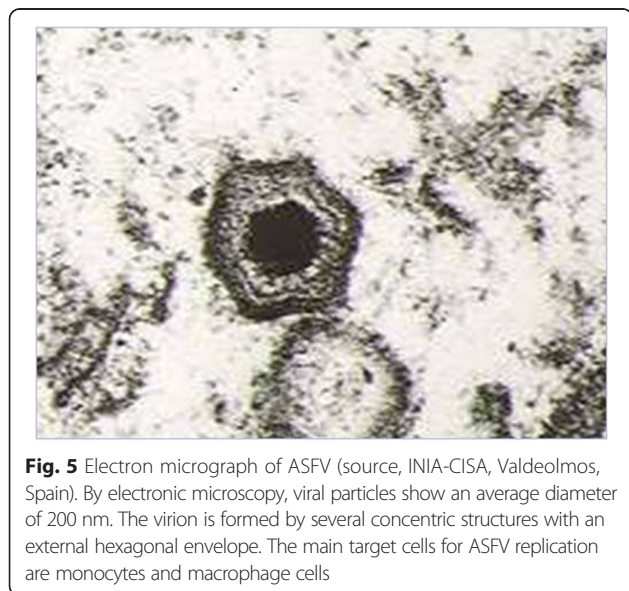


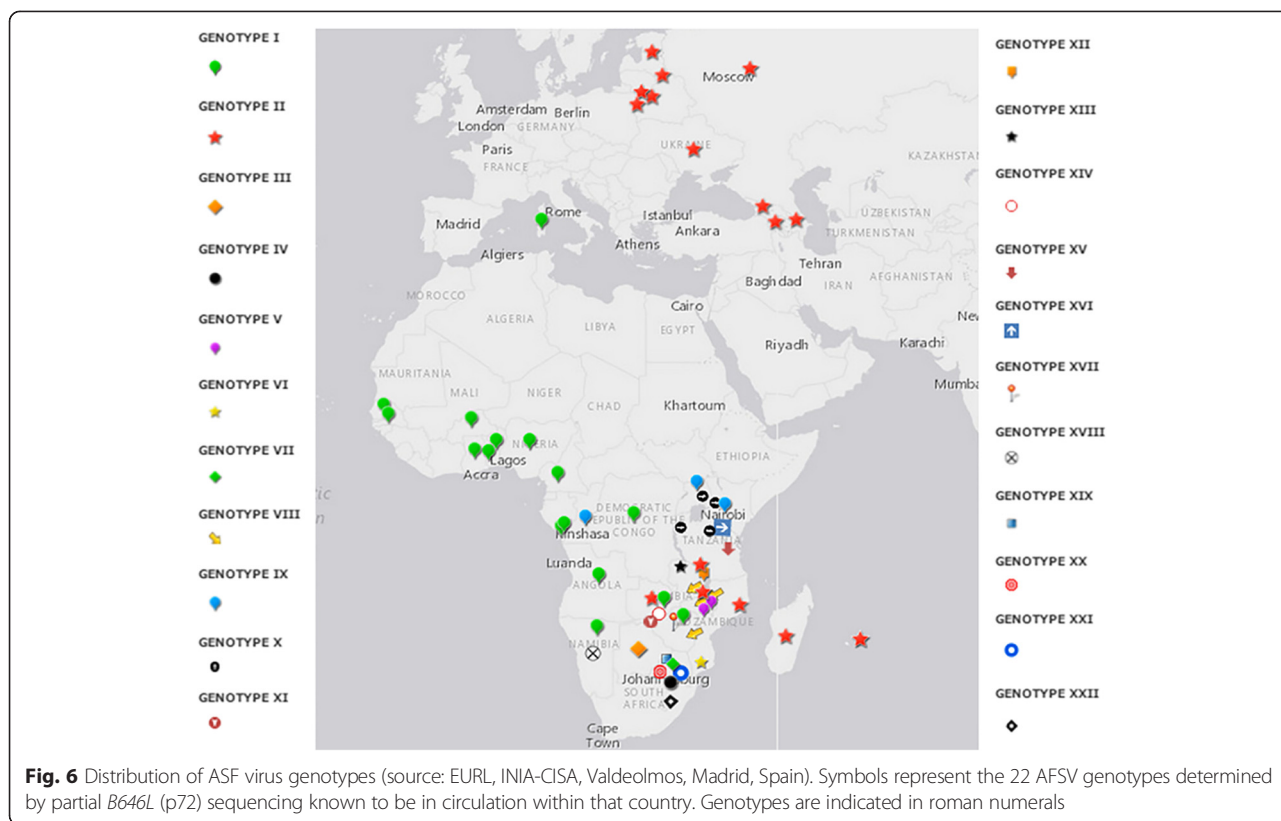
only p72 genotype II circulating in eastern European indicating a single introduction in 2007 [23, 27]. A variable region between genes characterized by the presence of tandem repeat sequences (TRS), recently identified as useful for subtyping gene identification, has revealed the presence of two variants in genotype II amongst the viruses circulating in Eastern European countries since 2012 [23, 40].

**Routes for virus entry, pathogenesis and transmission**

The entrance of ASFV into pigs normally occurs either orally or nasally, although other routes such as cutaneous, subcutaneous, via tick-bites or scarification have also been reported. Traditionally, virus entrance into free regions usually occurs as a result of uncooked pork waste—especially from ships and aircraft—being fed to pigs. Once the disease is established in an area, it mainly spreads by direct contact between sick and healthy animals (domestic pigs and wild Suidae), recovered carrier pigs and soft ticks or, for example, through indirect transmission by lorries, at drinking and eating troughs, via surgical and personal equipment, rodents, or other farm animals [1].

ASF has an incubation period of 4–19 days. Clinical course lasts for 4–5 days in acute infections or longer in cases of the subacute forms of the disease. Usually, peracute and acute forms appear at the beginning of the epidemic, which is characterized by high lethality and the rapid spread of outbreaks [41, 42]. Once the disease is established as endemic in an area, a broad range of clinical symptoms and clinical onsets are to be expected, with an increasing number of subacute, chronic and subclinical infections but with mortality rates that decline over time. Infected animals can survive for several weeks and some even recover from the infection and remain sub-clinically infected for a period of time [41, 43–49]. In endemic zones, the





disease progresses towards subacute and subclinical forms, sometimes due to the appearance of virus isolates of moderate and low virulence that are more difficult to recognize in the field. In these cases, the infection may persist for several months with no particular obvious symptoms in infected animals other than transient fever, stunting or emaciation, symptoms that may even mimic certain other diseases [42, 45, 50–55].

**Clinical symptoms and lesions**

Unlike Classical Swine Fever (CSF), which mainly affects young pigs, all age groups are equally susceptible to ASF. ASFV strains are classified as of high, moderate or

low virulence [55–58]. Highly virulent strains are usually responsible for the peracute and acute forms that provoke high mortality rates that may reach 100 % within 4–9 days post-infection. In peracute ASF, affected animals may die suddenly 1–4 days after the onset of clinical signs with no evident lesions in organs.

The **acute form** of the disease is usually characterized by a febrile syndrome with erythema and cyanosis of the skin (Fig. 7). Functional failures of internal organs, above all of the digestive system, vomiting and haemorrhagic diarrhoea may occur. Anorexia, cyanosis and incoordination may occur 1–2 days before death. Abortion in pregnant sows has frequently been described. Internal lesions are mainly characterized by hyperaemic



splenomegaly and haemorrhages in organs, particularly in the visceral lymph nodes, with an excess of natural fluids in body cavities and spaces [55, 57, 59] (Figs. 8 and 9).

In **subacute forms** of the disease, a persistent or fluctuating fever lasts for up to 20 days; during this time, some pigs remain healthy, while others display the symptoms described above for the acute form, albeit less severely than normal. The mortality rates for subacute forms are in the range 30–70 % usually after 20 dpi. The subacute form is characterized by milder lesions than those described for the acute form [55].

In the **chronic form** of ASF, clinical signs and lesions are not specific but may persist for several months, giving rise to a range of conditions with symptoms such as skin ulcers and arthritis, delayed growth, emaciation, pneumonia and abortion. Overall, the clinical signs associated with the chronic form do not resemble the typical clinical picture of ASFV infections [7, 41, 43–45, 50, 55, 56, 60–62].

#### The role of survivor pigs

Survivor pigs, sub-clinically infected and chronically infected, can remain persistently infected for months which may contribute to virus transmission and play an important role in disease persistence in endemic areas, as well as in sporadic outbreaks and ASFV introductions into disease-free zones [1, 48, 49, 63–65]. Studies of virus persistence and the transmission of ASFV to susceptible animals are scarce. *In vivo* experiments using European domestic pigs have revealed an infectious period of moderately virulent virus isolates ranging from 20 to 40 days [66]. Other *in vivo* study of ASFV transmission with a virus isolate of low virulence have shown that recovered pigs are still able to transmit the virus to naive populations three months after being infected [67]. Field studies performed in affected regions of Brazil and

the Iberian Peninsula (1979–1981) have revealed that 3.5 % and 0.6 % of new outbreaks are thought to be caused by seropositive domestic pigs that have survived the initial infection [43, 47, 65]. Recent observations in endemic regions of East Africa such as Tanzania have estimated the presence of asymptomatic seropositive pigs at 3.72 %, even one year after the occurrence of an ASF outbreak [68]. Similar findings have been reported from Kenya and Uganda [69, 70].

The persistence of viruses in tissues of infected animals for up to six months has been repeatedly proven which indicates the length of the risk period during which the disease can be contracted from infected carcasses [51, 52, 71, 72].

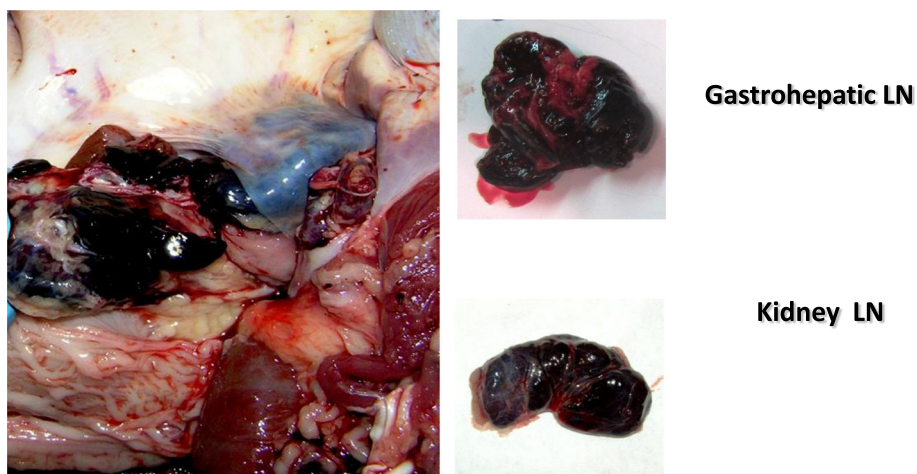
#### Some considerations regarding ASF in affected regions

##### A) A brief view of the disease in Africa

The pig population in Africa is concentrated in sub-Saharan Africa, mostly on small-scale family farms. AU-IBAR-FAO data obtained in 2013 show it consisted of around 32 million heads distributed regionally as follows: 42, 32, 14 and 12 % in western, southern, eastern, and central Africa, respectively [73]. ASF was present in most of these areas in the past. However, from 1995 onwards, a significant increase in the number of ASF outbreaks occurred in sub-Saharan regions and new countries were affected. The disease spread extensively particularly in western regions and on some islands previously free of the disease, such as Madagascar and Mauritius. This upsurge of the disease in Africa, coupled with a lack of awareness, were crucial factors in the spread of the virus beyond Africa and into the Caucasus region (Georgia, Europe) in April 2007. As well, the disease recently re-emerged in 2014 and 2015 in the Ivory Coast and on Cape



**Fig. 8** Gross lesions of acute form of ASF in a domestic pig experimentally infected with an ASFV genotype II isolate circulating in Eastern Europe (source: EUURL, INIA-CISA, Valdeolmos, Madrid, Spain). Spleen displaying hyperemic splenomegaly (enlarged with rounded edges, friable and dark red to black)



**Fig. 9** Gross lesions of acute form of ASF in a domestic pig experimentally infected with an ASFV genotype II isolate circulating in Eastern Europe (source: EURL, INIA-CISA, Valdeolmos, Madrid, Spain). Lymph nodes (LN) enlarged edematous and completely hemorrhagic similar to a blood clot, mainly gastro hepatic and kidney LNs

Verde, respectively, after over 15 years of silence (OIE notifications).

To date, ASF is endemic in more than 23 countries in sub-Saharan Africa. The transmission of the ASF virus occurs via a number of complex epidemiological scenarios that depend on the presence of the presence of reservoirs, wild Suidae and soft ticks (*Ornithodoros moubata*), and domestic pig hosts, certain types of animal production and husbandry, and social behaviour. In eastern and southern Africa, where all the 22 ASFV genotypes are known to circulate, the disease is maintained by the concurrent existence of transmission cycles involving asymptomatic wild Suidae (*Phacochoerus* and *Potamochoerus* spp.), soft ticks (*O. porcinus*) and domestic pigs. By contrast, the pig to pig transmission cycle is predominant in western Africa, where no ticks have been reported to date [1, 37, 49].

The clinical picture of ASF reported in domestic pigs in African regions shows acute and sub-acute forms of the disease, associated with both virulent and moderately virulent virus isolates. In these animals, the viraemia starts few days after infection and antibody response can be usually detected from the second week post-infection onwards [62, 71]. In addition, the presence of subacute-to-unapparent clinical signs in local 'indigenous' domestic breeds in regions of East African has also been described in recent years. An *in vivo* experiment in both, local indigenous and European breeds, showed local indigenous pigs displayed a clear significant delay in the onset of ASF infection compared to the European breeds of pig, as well as an unclear, unspecific and non-pathognomonic clinical picture of the disease.

High viraemia was detected in both groups, and a significant delay in the detectable antibody response was also observed, results that in some cases were absent in the local breed when compared to European breed [74].

B) A brief view of the disease in Eastern Europe  
Once introduced into the Caucasus in 2007, ASF spread rapidly into the neighbouring countries of Armenia and Azerbaijan, and then into southwest Russia, from where, due to the lack of any effective control measures, it continued its spread into the Ukraine (2012) and Belarus (2013). At present, a clear endemic pattern in both domestic pigs and wild boars has been identified in two regions of southwest and central Russia [5].

The first notification of ASF in an EU country occurred in January 2014 in wild boar from Lithuania. A month later, new cases of ASF were detected in Poland and later in Latvia and Estonia. To date (09/2015), nearly a thousand of ASF notifications in wild boar and in lesser extent in domestic pigs (around 75, mostly in backyard farms) have been reported, in many cases in the eastern regions of the above-mentioned countries that border on Belarus and Russia. It is highly likely that the disease was introduced into the EU in 2014 by wild boar entering Lithuania, Poland and Latvia, from Belarus, or Estonia from Latvia [75]. The ASFV isolates circulating in Eastern Europe are virulent viruses that induce acute forms of ASF with high lethality in both domestic and wild animals [59, 76–78]. Deaths usually occur in the second week after infection. However, since the introduction of the virus into the Russian Federation in 2007 ASF

has become a large-scale epidemic involving both domestic pig and wild boar populations, with two recognized endemic zones in central and southern parts of the Russian Federation [5]. Field and experimental findings in Russia reveal the existence of sero positive wild boar animals previously diagnosed at the limit of the detection or negative when tested with the ASF virological assays [79–81]. These data suggest that, despite the virulent nature of current ASFV circulating strains affecting East Europe, some animals can survive for over a month and are able to recover from the infection, even remaining sub-clinically infected, and could become virus carriers enabling the virus to persist and spread amongst the porcine population [59, 67]. It has been demonstrated that in areas where ASF becomes endemic, increased numbers of subacute and subclinical infections also occur, and that mortality rates decline over time [43, 44]. This could be related to the acquired immunity from previous exposure to lower doses of virus, adaptation of the virus to the host and/or the evolution to viruses with reduced virulence which can emerge after many years of circulation into the pig populations [1, 7]. It is important to note that, in contrast to Russia, where domestic pigs play a major role in the transmission of the disease [82, 83], to date in the EU wild boar are the hosts that are causing greatest concern. The ASF cases occurring in the wild boar population demonstrate the epidemiological complexity of the scenario and the inherent difficulties in containing the propagation of the virus in the regions bordering on Russia and Belarus. In these countries, the disease is not being effectively controlled and continued spill-over into bordering regions is likely to occur as a result.

#### **Understanding ASFV infection dynamics on industrial pig farms**

Some outbreaks on pig farms have been particularly dramatic and thousands of animals have had to be slaughtered. Therefore, it is worth analysing how ASFV infections occur and what lessons should be learned from such outbreaks. A good example occurred during summer 2014 in the Ignalina region (Utena province) in northeast Lithuania, 22 km from the frontier with Belarus [84]. This outbreak occurred in an intensive industrial pig farm, with a closed cycle and very strict biosecurity measures, and had catastrophic consequences as over 20,000 animals had to be sacrificed. As a result of the observations it was demonstrated after its first entry in a pig farm, the virus moves and spreads initially without evident clinical signs of ASF. The first sign was the sudden death of a few animals in the same shed, which

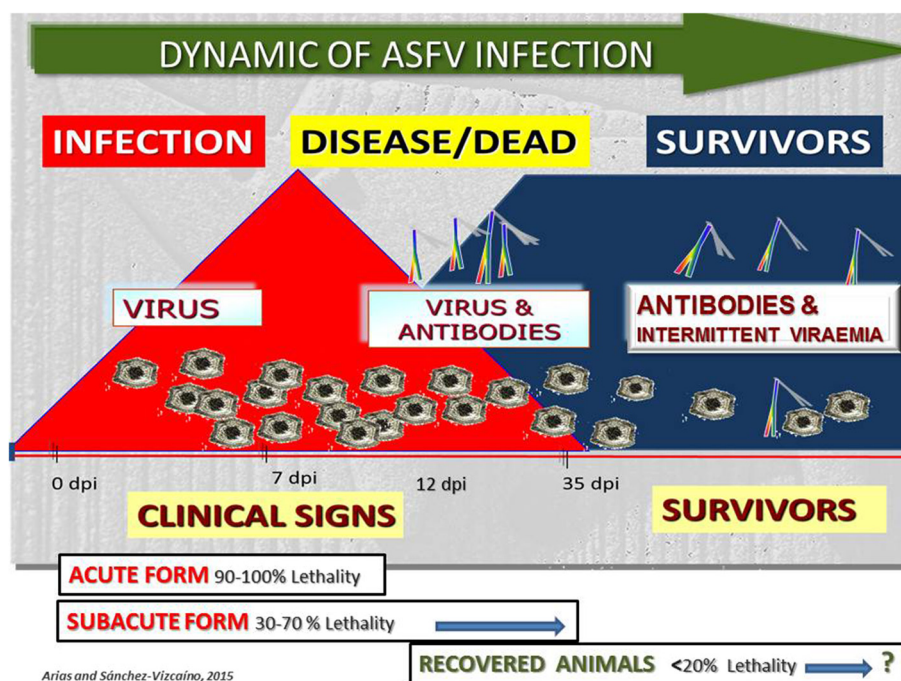
was associated to other causes, such as poisoning. Following this initial infection, the virus multiplied resulting in a second wave of infection within 12–14 days that leads to many more deaths. This second–or even third–wave affects more animals in the same area, and leads to devastating waves of deaths a few days later in which almost all the animals in the same stall die.

This information offers crucial insights: disease field recognition should be one of the major pillars of early disease detection. Therefore, tighter clinical controls must be established. In high-risk areas, sudden deaths of a few animals should not simply be attributed to common causes and should, instead, be treated with the utmost seriousness. It is important to point out that different evolution patterns of the ASFV infection can be expected. The movement and the spread of the waves of ASFV infection will depend on biosecurity conditions and the type of production system, husbandry, management and organization involved. A key element in prevention – above all in areas at risk either due to their proximity to infection sources or to trade routes – is to heed even minimal clinical symptoms, i.e. fevers, when they appear, even if they only affect just a few animals. Periodical clinical checking must be carried out, along with the implementation of strict biosecurity measures based on available protocols designed to control the movements of animals, staff and vehicles. The earlier the disease is detected, the fewer the losses and the easier it will be to halt the propagation of the virus to other farms.

#### **ASF Diagnosis**

Early detection of the disease is required to implement sanitary and biosecurity control measures in order to prevent the spread of the disease [49]. However, ASF clinical diagnosis is not easy due to (i) the wide range of clinical forms and the disease's complex epidemiology, with a number of different scenarios, and (ii) the similarity of its symptoms to those of other viral infections such as CSF, PRRS, swine erysipelas, salmonella, Porcine Dermatitis and Nephropathy Syndrome, as well as other septicaemic conditions such as poisoning. Therefore, rapid laboratory diagnosis is essential and it should involve the detection and identification of the virus particles and the specific anti-ASFV antibodies. A good laboratory diagnosis and interpretation provide relevant information on infection dynamic that will be very helpful to deploy effective control–eradication programs (Fig. 10). The techniques currently in use provide a confident diagnosis of ASF in any epidemiological situation [85–89] (Fig. 11). The use of the most appropriate diagnostic tools updated for all scenarios is critical for successfully implementing effective control programs. PCR tests are the first choice for early detection of the





**Fig. 10** Dynamic of ASF infection (source: OIE WRL, UCM, Madrid, Spain and EURL, INIA-CISA, Valdeolmos, Madrid, Spain). The picture summarizes the ASF virus appearance in blood and antibodies after an ASFV infection. In addition, it shows the lethality of the different forms of the clinical disease, which ranges from acute to a subacute, as well as from recovered animals. Antibodies are detectable for a long period of time following the initial exposure

ASFV genome in epidemic situations, although not all such tests are fully sensitive to the low viraemia levels, which can be most often evident in infected animals of endemic zones. For antibody detection, it is important to note that current ELISA tests have a limited

sensitivity in the case of low antibody titres and usually detect antibodies from 12–14 days post-infection. Indirect Immunoperoxidase tests (IPT) and Indirect Immunofluorescence tests (IIF) are very useful for detecting specific antibodies, although they cannot be

### AVAILABLE VALIDATED DIAGNOSTIC TESTS IN USE

#### ANTIBODY DETECTION TECHNIQUES

- ELISA K3\*
- ELISA OIE
- ELISA ID-VET\*
- ELISA-Svanova\*

#### Ab PENSIDE test\*

#### Confirmatory tests:

- IB TEST
- IPT TEST
- IFA TEST

\* COMMERCIAL KITS

#### VIRUS DETECTION TECHNIQUES

- Virus Isolation/HAD
- FAT (DIF) TEST
- Antigen ELISA K2\*
- PCR Conventional-Aguero
- Real timePCR-King
- UPL PCR
- PCR Multiplex
- PCR Tignon
- PCR Tetracore \*
- Tetracore/ARS

**Fig. 11** Summary of current available validated ASF Diagnosis tests (source: EURL, INIA-CISA, Valdeolmos, Madrid, Spain). A significant number of tests are available for ASF diagnosis. Since 2010 several new commercial tests have been incorporated in the market, and several others are coming from companies mainly referred to new PCR commercial kit from Ingenasa, Life technologies, or Quiagen that would require to be validated by International Organisms (OIE, EU...)

used as screening tests [87]. Once the best and most readily available tools for diagnosis have been identified, it is also necessary to apply a specific value to each diagnostic test and bear in mind their limits in the context of each epidemiological situation, i.e. whether it is taking place in an ASF-free region or an endemic zone, in case of an outbreak. If ASFV enters a disease-free area, virus isolation should be carried out to confirm the presence of the disease. Due to the ASF characteristics and disease dynamics, it is essential that virus and antibody detection techniques be performed in parallel by diagnostic laboratories to ensure a complete picture of the epidemiological situation on a day-to-day basis.

### **Vaccines**

No vaccine currently exists to prevent and control ASF. For over 40 years various different strategies have been employed in the search for an effective vaccine for this disease. Given the complexity of the virus, with genes involved in the evasion of the immune response [90–92], and the absence of an effective protection mediated by neutralizing antibodies [93], the conventional formulations of live and inactivated vaccines that work with the majority of pathogens have not yet been efficient as protection against ASFV. Nevertheless, it is known that recovered pigs can be protected against subsequent infections with related viruses, as well as partial protection can be achieved with attenuated and low virulent isolates [62, 94, 95]. These data together the advances on the molecular and biological characteristics of the virus [11, 13], and on the immune mechanism that could be involved in protection [92], have led to the development of new promising vaccine candidates. Currently, a number of different approaches are under study [96–100], the most promising of which are based on stimulating the cytolytic CD8<sup>+</sup> T-cell and antibody response [92, 98, 99]. These strategies include the construction of deletion mutants from virulent or moderate to low virulent virus isolates, by deleting genes involved in i.e replication, virulence, cellular transport or innate immune response [96, 97, 100]. These vaccine candidates are in a first assessment step, so studies for safety, adverse reactions, potential persistence and transmission in the field are far to be evaluated.

### **How to control the disease**

Disease knowledge and epidemiological information is crucial for controlling ASF in affected areas. Information about the type of hosts involved, their location, and potential role in virus transmission and spread, the biological characteristics of the circulating virus and the clinical picture to be expected given the host affected, as well as the environmental, social and cultural features of

the disease site a definition of risk factors for ASFV entrance and spreading in and specific area, are of major importance and should be elucidated for the provision of an effective control programme.

In areas with limited resources to fight against ASF, education of veterinarians, producers, and farmers is a major issue to maintain a regular clinical inspection of animals as well as the reinforcement of preventive biosecurity measures to guarantee the safe production and marketing of pigs and pig as a means of optimizing control strategies based on risk reduction that would lessen the laboratory costs of contingency and control plans.

### **Control-eradication strategies**

#### ***Africa***

Currently, regional initiatives exist that include specific control programmes designed to reduce the impact of ASF on the pig sector in Africa. As well, an initiative is being prepared by AU-IBAR-FAO for the control of the disease in eastern Africa. The main strategy is based in controlling ASF in the affected areas and to prevent it from being introduced into non-infected areas. Regional governments and international organisms such as AU-IBAR/FAO working groups are working on ways to improve disease information, identify socio-economic drivers, increase awareness amongst farmers, butchers and other pig-sector stakeholders, strengthen the capacities of veterinary services in disease detection, diagnosis, surveillance, management, contingency planning and emergency response, and pinpoint priority actions and opportunities for collaboration. Disease monitoring and epidemio-surveillance systems are weak and data and information about ASF are mainly being generated by passive surveillance. To guide the establishment of a national surveillance system for ASF, strategies should be developed based on existing FAO and OIE guidelines. The design of risk-based surveillance systems that take into account risk factors for ASF occurrence and transmission will maximize the efficiency and efficacy of the system.

#### ***Eastern Europe***

Non-EU countries are combating ASF and trying to prevent the disease from spreading. However, few effective results have been obtained so far and the disease continues to spread into neighbouring countries, mainly along wild boar corridors, and other ways of virus transmission could occur at any time.

In EU countries, the prevention measures implemented when ASF first appeared in Eastern Europe in 2007 were initially based on strengthening surveillance programmes. Subsequently, as ASF was progressing, a revision of contingency plans in EU member states was carried out that, along with the addition of new methods

to the existing preventive measures, enabled the virus to be detected very quickly. As the situation got worse, however, an increase in protection measures was also executed, which currently includes the disinfecting of vehicles, stricter controls at border crossings, the suspension of livestock markets, greater biosecurity on farms, awareness-raising campaigns and tougher vigilance programmes [101–103]. This latter task currently involves an increase in the number of diagnostic analyses of domestic pigs and wild boar, the creation of buffer zones aimed at reducing wild boar densities and limiting their ability to cross frontiers, and, in some cases, the preventative slaughtering of pigs in backyard farms in high-risk areas. Evidence of the EU's capacity to control and contain this disease is the success it has had on the island of Sardinia, from where, despite its presence for two decades, it has never crossed over onto the European mainland. Right from the start of the outbreaks in the Eastern European Union countries in 2014, the European Commission decided to apply the World Trade Organization's regionalization principle, in line with the OIE's international standards. Current control and eradication programmes in the EU contain all the elements that should guarantee their success. Awareness-raising, epidemiological information, strict biosecurity and sanitary measures, coordination between all implicated parts, good communication between sources of field information and diagnostic laboratories, advances in the resolution of problems and the deficiencies that arise, the promotion of necessary epidemiological research in affected areas, and so forth. Nevertheless, if affected countries in Eastern Europe are unable to contain the spread of the disease, the EU must be aware that isolated wild boar cases will continue to occur in border areas of the EU, and that they will have to be combated.

#### A worldwide threat

The risk of introduction of ASF into new regions is likely to occur in a near future. The major threat is currently for the East Asian countries that maintain important trade and links with ASF endemic African countries, although the risk coming from Eastern Europe bordering countries is not a trivial matter. China, with the highest pig population of the world, and a large proportion of family and free ranging pigs, could encounter difficulties in controlling ASF in case of an incursion into these production systems. Nor should we forget the worldwide trade and communications by roadways, planes and ships place all regions, and continents at risk.

#### Conclusions

ASF is a very complex disease, with complex epidemiology and many different scenarios in which certain hosts, playing different roles, interact with a number of different circulating virus isolates. Since no vaccine is

currently available, prevention and control must be based on early detection and strict sanitary measures. Early detection should be based on rapid disease recognition in the field, followed by laboratory diagnosis, that it is essential for disease control. Further knowledge of the disease is necessary for progress in prevention and control-eradication strategies in Africa and Eastern Europe. Continuing education of veterinary services, vets, producers and hunters by training, awareness of the risk factors involved in ASFV entrance and spread, virus-host interactions, virus transmission mechanisms, improved knowledge of the presence of vectors and reservoirs, the development of risk maps and models for ASFV diffusion, and the assessment of the role carrier animals play under different scenarios are just some of the issues that must be tackled. Without the pertinent information, the disease cannot be fought. The current panorama indicates that – unfortunately – we will not be able to ignore African swine fever for some time yet. This is a worldwide threat and all countries must be adequately prepared.

#### Competing interests

The authors declare that they have no competing interests.

#### Authors' contributions

MA conceived the review design and drafted the manuscript; CG drafted the manuscript; JFP participated in the molecular epidemiology and diagnosis sections, and AT, II, and MM participated in the epidemiology and control sections of the manuscript. All authors read and approved the final manuscript.

#### Acknowledgement

We would like to thank the Veterinary Services and National Reference Laboratories for ASF in Lithuania, Poland, Latvia, Estonia, Kenya and Uganda, as well as the Food Agriculture Organization of the United Nations (FAO), African Union, (AU-IBAR) and the International Livestock Research Institute (ILRI) for their collaboration to improve knowledge of the disease. Research from our ASF Team were funded by the European Union Reference laboratory for ASF (grant n° UE-LR PPA/03), ASFORCE EU project "Targeted Research Effort on African Swine Fever" (KBBE.2012.1.3-02, 311931) and Spanish Ministry of Agriculture, INIA and National grant RTA 2011-0060.

#### Author details

<sup>1</sup>European Union Reference Laboratory (EURL) for African swine fever, INIA-CISA, 28130 Valdeolmos, Madrid, Spain. <sup>2</sup>FAO Reference Centre for African swine fever, INIA-CISA, Valdeolmos 28130 Madrid, Spain. <sup>3</sup>Epidemiology Department, National Institute for Agricultural and Food Research and Technology, Animal Health Research Centre, INIA-CISA, 28130 Valdeolmos, Madrid, Spain.

Received: 17 September 2015 Accepted: 12 November 2015

Published online: 23 December 2015

#### References

1. Penrith ML, Vosloo W. Review of African swine fever: transmission spread and control. *J S Afr Vet Assoc.* 2009;80:58–62.
2. Plowright W, Parker J, Peirce MA. African swine fever virus in ticks (*Ornithodoros moubata*, murray) collected from animal burrows in Tanzania. *Nature.* 1969;221:1071–3.
3. Sánchez Botija C. Reservorios del virus de la peste porcina africana. Investigación del virus de la PPA en los artrópodos mediante la prueba de la Hemoadsorción. *Bull OIE.* 1963;60:895–9.
4. Food and Agriculture Organization, United Nations, (2013): African swine fever in the Russian Federation: risk factors for Europe and beyond. *EMPRES Watch.* Vol. 28; 2013 May [cited 2013 Sep 2]. <http://www.fao.org/docrep/018/aq240e/aq240e.pdf>

5. Gogin A, Gerasimov V, Malogolovkin A, Kolbasov D. African swine fever in the North Caucasus region and the Russian Federation in years 2007–2012. *Virus Res.* 2013;173:198–203.
6. Montgomery RE. A form of swine fever occurring in British East Africa (Kenya Colony). *J Comp Pathol.* 1921;34:159–91.
7. Penrith ML, Vosloo W, Jori F, Bastos AD. African swine fever virus eradication in Africa. *Virus Res.* 2013;173:228–46.
8. Dixon LK, Escribano JM, Martins C, Rock DL, Salas ML, Wilkinson PJ. Asfarviridae. In: Mayo MA, Maniloff J, Desselberger U, editors. *Virus Taxonomy*. VIII. Report of the ICTV Elsevier. London: Academic; 2005. p. 135–43.
9. Dixon LK, Chapman DA, Netherton CL, Upton C. African swine fever virus replication and genomics. *Virus Res.* 2013;173(1):3–14.
10. De Villiers EP, Gallardo C, Arias M, Da Silva M, Upton C, Martin R, et al. Phylogenomic analysis of 11 complete African swine fever virus genome sequences. *Virology.* 2010;400:128–36.
11. Chapman DA, Tcherepanov V, Upton C, Dixon LK. Comparison of the genome sequences of non-pathogenic and pathogenic African swine fever virus isolates. *J Gen Virol.* 2008;89:397–408.
12. Chapman DA, Darby AC, Da Silva M, Upton C, Radford AD, Dixon LK. Genomic analysis of highly virulent Georgia 2007/1 isolate of African swine fever virus. *Emerg Infect Dis.* 2011;17:599–605.
13. Portugal R, Coelho J, Hoper D, Little NS, Smithson C, Upton C, et al. Related strains of African swine fever virus with different virulence: genome comparison and analysis. *J Gen Virol.* 2015;96:408–19.
14. Bishop RP, Fleischauer C, De Villiers EP, Okoth EA, Arias M, Gallardo C, et al. Comparative analysis of the complete genome sequences of Kenyan African swine fever virus isolates within p72 genotypes IX and X. *Virus Genes.* 2015; 50(2):303–9. doi:10.1007/s11262-014-1156-7. Epub 2015 Feb 3. PubMed.
15. Malmquist WA, Hay D. Hemadsorption and cytopathic effect produced by African swine fever virus in swine bone marrow and buffy coat cultures. *Am J Vet Res.* 1960;21:104–8.
16. Salas ML, Andrés G. African swine fever virus morphogenesis. *Virus Res.* 2013;173(1):29–41. doi:10.1016/j.virusres.2012.09.016. Epub 2012 Oct 8.
17. Pastor M, Laviada M, Sánchez-Vizcaino JM, Escribano J. Detection of African swine fever virus antibodies by immunoblotting assay. *Can J Vet Res.* 1989;53:105–7.
18. Gallardo C, Blanco E, Rodríguez JM, Carrascosa AL, Sánchez-Vizcaino JM. Antigenic properties and diagnostic potential of African swine fever virus protein pp 62 expressed in insect cells. *J Clin Microbiol.* 2006;44(3):950–6. PubMed PMID: 16517882, PubMed Central PMCID: PMC1393094.
19. Neilan JG, Zsak L, Lu Z, Burrage TG, Kutish GF, Rock DL. Neutralizing antibodies to African swine fever virus proteins p30, p54, and p72 are not sufficient for antibody-mediated protection. *Virology.* 2004;319(2):337–4.
20. EUROPEAN FOOD SAFETY AUTHORITY Journal, Scientific Opinion on African swine fever. 2010. *EFSA Journal* 2010; 8 (3):1556 [149 pp.]. doi:10.2903/j.efsa.2010.1556. [http://www.efsa.europa.eu/sites/default/files/scientific\\_output/files/main\\_documents/1556.pdf](http://www.efsa.europa.eu/sites/default/files/scientific_output/files/main_documents/1556.pdf)
21. Mebus C, Arias M, Pineda J, Tapiador J, House J, Sánchez-Vizcaino JM. Survival of several porcine viruses in different Spanish dry-cured meat products. *Food Chem.* 1997;59(4):555–9.
22. Malogolovkin A, Burmakina G, Titov I, Sereda A, Gogin A, Baryshnikova E, et al. Comparative analysis of African swine fever virus genotypes and serogroups. *Emerg Infect Dis.* 2015;21(2):312–5.
23. Gallardo C, Fernández-Pinero J, Pelayo V, Gazaev I, Markowska-Daniel I, Pridotkas G, et al. Genetic variation among African swine fever genotype II viruses, eastern and central Europe. *Emerg Infect Dis.* 2014;20(9):1544–7.
24. Misinzio G, Kwavi DE, Sikombe CD, Makange M, Peter E, Muhairwa AP, et al. Molecular characterization of African swine fever virus from domestic pigs in northern Tanzania during an outbreak in 2013. *Trop Anim Health Prod.* 2014; 46(7):1199–207. doi:10.1007/s11250-014-0628-z. PubMed PMID: 24996815, PubMed Central PMCID: PMC4180026, Epub 2014 Jul 5.
25. Atuhaire DK, Afayoa M, Ochwo S, Mwisigwa S, Okuni JB, Olaho-Mukani W, et al. Molecular characterization and phylogenetic study of African swine fever virus isolates from recent outbreaks in Uganda (2010–2013). *Virology.* 2013;10:247. doi:10.1186/1743-422x-10-247. PubMed PMID: 23914918, PubMed Central PMCID: PMC3735491.
26. Misinzio G, Kasanga CJ, Mpelumbe-Ngeleja C, Masambu J, Kitambi A, Van Doorselaere J. African swine fever virus, Tanzania, 2010–2012. *Emerg Infect Dis.* 2012;18(12):2081–3. doi:10.3201/eid1812.121083. PubMed PMID: 23171814, PubMed Central PMCID: PMC3557871.
27. Malogolovkin A, Yelsukova A, Gallardo C, Tsybanov S, Kolbasov D. Molecular characterization of African swine fever virus isolates originating from outbreaks in the Russian Federation between 2007 and 2011. *Vet Microbiol.* 2012;158(3–4):415–9. doi:10.1016/j.vetmic.2012.03.002. Epub 2012 Mar 8. PubMed.
28. Giammaroli M, Gallardo C, Oggiano A, Iscaro C, Nieto R, Pellegrini C, et al. Genetic characterisation of African swine fever viruses from recent and historical outbreaks in Sardinia (1978–2009). *Virus Genes.* 2011;42(3):377–87. doi:10.1007/s11262-011-0587-7. Epub 2011 Mar 5. PubMed.
29. Gallardo C, Okoth E, Pelayo V, Anchuelo R, Martín E, Simón A, et al. African swine fever viruses with two different genotypes, both of which occur in domestic pigs, are associated with ticks and adult warthogs, respectively, at a single geographical site. *J Gen Virol.* 2011;92(Pt 2):432–44. doi:10.1099/vir.0.025874-0. Epub 2010 Oct 21. PubMed.
30. Owolodun OA, Bastos AD, Antiabong JF, Ogedengbe ME, Ekong PS, Yakubu B. Molecular characterisation of African swine fever viruses from Nigeria (2003–2006) recovers multiple virus variants and reaffirms CVR epidemiological utility. *Virus Genes.* 2010;41(3):361–8. doi:10.1007/s11262-009-0444-0. Epub 2010 Jan 6. PubMed.
31. Lubisi BA, Dwarka RM, Meenowa D, Jaumally R. An investigation into the first outbreak of African swine fever in the Republic of Mauritius. *Transbound Emerg Dis.* 2009;56(5):178–88. doi:10.1111/j.1865-1682.2009.01078.x. PubMed.
32. Rowlands RJ, Michaud V, Heath L, Hutchings G, Oura C, Vosloo W, et al. African swine fever virus isolate, Georgia, 2007. *Emerg Infect Dis.* 2008; 14(12):1870–4. doi:10.3201/eid1412.080591. PubMed. PMID: 19046509, PubMed Central PMCID: PMC2634662.
33. Gallardo C, Mwaengo DM, Macharia JM, Arias M, Taracha EA, Soler A, et al. Enhanced discrimination of African swine fever virus isolates through nucleotide sequencing of the p54, p72, and pB602L (CVR) genes. *Virus Genes.* 2009;38(1):85–95. doi:10.1007/s11262-008-0293-2. Epub 2008 Nov 14. PubMed.
34. Lubisi BA, Bastos AD, Dwarka RM, Vosloo W. Intra-genotypic resolution of African swine fever viruses from an East African domestic pig cycle: a combined p72-CVR approach. *Virus Genes.* 2007;35(3):729–35. Epub 2007 Aug 3. PubMed.
35. Boshoff CI, Bastos AD, Gerber LJ, Vosloo W. Genetic characterisation of African swine fever viruses from outbreaks in southern Africa (1973–1999). *Vet Microbiol.* 2007;121(1–2):45–55. Epub 2006 Nov 21. PubMed.
36. Nix RJ, Gallardo C, Hutchings G, Blanco E, Dixon LK. Molecular epidemiology of African swine fever virus studied by analysis of four variable genome regions. *Arch Virol.* 2006;151(12):2475–94. Epub 2006 Jul 3. PubMed.
37. Lubisi BA, Bastos AD, Dwarka RM, Vosloo W. Molecular epidemiology of African swine fever in East Africa. *Arch Virol.* 2005;150(12):2439–52. Epub 2005 Aug 1. PubMed.
38. Bastos AD, Penrith ML, Macome F, Pinto F, Thomson GR. Co-circulation of two genetically distinct viruses in an outbreak of African swine fever in Mozambique: no evidence for individual co-infection. *Vet Microbiol.* 2004; 103(3–4):169–82. PubMed.
39. Bastos AD, Penrith ML, Crucière C, Edrich JL, Hutchings G, Roger F, et al. Genotyping field strains of African swine fever virus by partial p72 gene characterisation. *Arch Virol.* 2003;148(4):693–706. PubMed.
40. Goller KV, Malogolovkin AS, Katorkin S, Kolbasov D, Titov I, Höper D, et al. Tandem repeat insertion in African swine fever virus, Russia, 2012. *Emerg Infect Dis.* 2015;21(4):731–2.
41. Mebus CA, Dardiri AH, Hamdy FM, Ferris DH, Hess WR, Callis JJ. Some characteristics of African swine fever viruses isolated from Brazil and the Dominican Republic. *Proc Annu Meet U S Anim Health Assoc.* 1978;82:232–6.
42. Hess WR. African swine fever: a reassessment. *Adv Vet Sci Comp Med.* 1981; 25:39–69. PubMed PMID: 7034503. Review.
43. Mebus CA, and Dardiri AH. Additional characteristics of disease caused by the African swine fever viruses isolated from Brazil and the Dominican Republic. *Proceedings of the Annual Meeting of the US Animal Health Association, 1979;* 227–239.
44. Mebus CA, Dardiri AH. Western Hemisphere isolates of African swine fever virus: asymptomatic carriers and resistance to challenge inoculation. *Am J Vet Res.* 1980;41:1867–9.
45. Sánchez BC. African swine fever. *New developments. Rev Sci Tech.* 1982;1:1065–94.
46. Bech Nielsen S, Pérez Bonilla Q, Sánchez-Vizcaino JM. Benefit-cost analysis of the current African Swine fever eradication program in Spain and of an accelerated program. *Prev Vet Med.* 1995;17:235–49.
47. Pérez J, Fernández AI, Sierra MA, Herraez P, Fernández A, MJ M. Serological and immunohistochemical study of African swine fever in wild boar in Spain. *Vet Rec.* 1998;143:136–9.

48. Arias M, Sánchez-Vizcaíno JM. African swine fever eradication: The Spanish model. In: Morilla A, Jin K, Zimmerman J, editors. *Trends in Emerging Viral Infections of Swine*. 1st ed. Ames, IA, USA: Iowa State University Press; 2002. p. 133–9.
49. Sánchez-Vizcaíno JM, Arias M, Zimmerman J, Karriker LA, Ramirez A, Schwartz KJ, et al. *African Swine Fever. Diseases of swine*. 10th ed. United States of America: John Wiley and Sons; 2012. p. 396–404.
50. Thomson GR, Gainaru MD, Van Dellen AF. African swine fever: Pathogenicity and immunogenicity of two non-haemadsorbing viruses. *Onderstepoort Journal of veterinary Research*. 1979;46:149–54.
51. Wilkinson PJ, Wardley RC, Williams SM. African swine fever virus (Malta 78) in pigs. *J Comp Pathol*. 1981;91:277–84.
52. Wilkinson PJ, Wardley RC, Williams SM. Studies in pigs infected with African swine fever virus (Malta/78). In: Wilkinson PJ, EEC Publication EUR 8466 EN, editors. *CEC/FAO Expert Consultation on African Swine Fever Research, Sardinia*. 1983. p. 74–84.
53. Nsalambi D. Differences cliniques et anatomo-pathologiques de deux souches du virus de la peste porcine africaine (PPA) en Angola. *Revue d'Elevage et de Médecine vétérinaire du Pays tropicaux*. 1993;46(4):539–43.
54. Boinas FS, Hutchings GH, Dixon LK, Wilkinson PJ. Characterization of pathogenic and non-pathogenic African swine fever virus isolates from *Ornithodoros erraticus* inhabiting pig premises in Portugal. *J Gen Virol*. 2004;85(Pt 8):2177–87.
55. Sánchez-Vizcaíno JM, Mur L, Gómez-Villamandos JC, Carrasco L. An Update on the Epidemiology and Pathology of African Swine Fever. *J Comp Pathol*. 2015; 152, 9–21. <http://dx.doi.org/10.1016/j.jcpa.2014.09.003>
56. Pan IC, Hess WR. Virulence in African swine fever: its measurement and implications. *Am J Vet Res*. 1984;45:361–6.
57. Blome S, Gabriel C, Beer M. Pathogenesis of African swine fever in domestic pigs and European wild boar. *Virus Res*. 2013;173:122–30.
58. Gómez-Villamandos JC, Bautista MJ, Sánchez-Cordón PJ, Carrasco L. Pathology of African swine fever: the role of monocyte-macrophage. *Virus Res*. 2013;173(1):140–9.
59. Gallardo C, Soler A, Nieto R, Cano C, Pelayo V, Sánchez MA, Pridotkas G, Fernandez-Pinero J, Briones V, and Arias M, Experimental Infection of domestic pigs with African swine fever virus Lithuania 2014 genotype II field isolate. *Transbound Emerg Dis*. 2015 doi: 10.1111/tbed.12346.
60. Manso Ribeiro J, Nines Petisca JL, Lopes Frizão F, Sobral M. Vaccination contre la peste porcine africaine. *Bulletin de l'Office International des Epizooties*. 1963;80:921–37.
61. Moulton J, Coggins L. Comparison of lesions in acute and chronic African Swine fever. *Cornell Vet*. 1968;58:364–88.
62. Leitao A, Cartaxeiro C, Coelho R, Cruz B, Parkhouse RM, Portugal F, et al. The non haemadsorbing African swine fever virus isolate ASFV/NH/P68 provides a model for defining the protective anti-virus immune response. *J Gen Virol*. 2001;82:513–23.
63. Allaway EC, Chinombo DO, Edelsten RM, Hutchings GH, Sumption KJ. Serological study of pigs for antibody against African swine fever virus in two areas of southern Malawi. *Rev Sci Tech*. 1995;14(3):667–76.
64. Costard S, Mur L, Lubroth J, Sanchez-Vizcaíno JM, Pfeiffer DU. Epidemiology of African swine fever virus. *Virus Res*. 2013;173:191–7.
65. Vigário FL, Castro P, Festas MB, Vasco SG. CEC/FAO Expert Consultation on African Swine Fever Research, Sardinia. Sept, 1981. In: Wilkinson PJ, editor. *EEC Publication EUR 8466 EN*. 1983. p. 12–6.
66. De Carvalho Ferreira HC, Weesendorp E, Elbers AR, Bouma A, Quak S, Stegeman JA, et al. African swine fever virus excretion patterns in persistently infected animals: a quantitative approach. *Vet Microbiol*. 2012;160(3-4):327–40.
67. Gallardo C, Soler A, Nieto R, Sánchez MA, Martins C, Pelayo V, et al. Experimental Transmission of African Swine Fever (ASF) Low Virulent Isolate NH/P68 by Surviving Pigs. *Transbound Emerg Dis*. 2015;62(6):612–22.
68. Uttenthal A, Braae UC, Ngowi HA, Rasmussen TB, Nielsen J, Johansen MV. ASFV in Tanzania: Asymptomatic pigs harbor virus of molecular similarity to Georgia 2007. *Vet Microbiol*. 2013;165:173–6.
69. Atuhaire DK, Afayoa M, Ochwo S, Mwesigwa S, Mwini FN, Okuni JB, et al. Prevalence of African swine fever virus in apparently healthy domestic pigs in Uganda. *BMC Vet Res*. 2013;2013(9):263–71.
70. Okoth E, Gallardo C, Macharia JM, Omore A, Pelayo V, Bulimo DW, et al. Comparison of African swine fever virus prevalence and risk in two contrasting pig-farming systems in South-west and Central Kenya. *Prev Vet Med*. 2013;110(2):198–205.
71. Wilkinson PJ. The persistence of african swine fever in Africa and the Mediterranean. *Prev Vet Med*. 1984;2:71–82.
72. Hamdy FM, Dardiri AH. Clinical and immunologic responses of pigs to African swine fever virus isolated from the Western Hemisphere. *Am J Vet Res*. 1984;45:711–4.
73. African Union (AU-IBAR), and FAO Regional Strategy for the Control of ASF in East Africa. (Sept.2014). [http://www.fao.org/ag/AGInfo/programmes/en/empres/news\\_260914.html](http://www.fao.org/ag/AGInfo/programmes/en/empres/news_260914.html)
74. Gallardo C, Nieto R, Mur L, Soler A, Pelayo V, Bishop R, et al. African swine fever (ASF) in Africa. In: *The role of the African indigenous pigs in the transmission of the disease*. Brighton, UK: KeyNote, EPIZONE; 2012. p. 12–4.
75. EUROPEAN FOOD SAFETY AUTHORITY Journal, African swine Fever. 2015. doi:10.2903/j.efsa.2015.4163. [http://www.efsa.europa.eu/sites/default/files/scientific\\_output/files/main\\_documents/4163.pdf](http://www.efsa.europa.eu/sites/default/files/scientific_output/files/main_documents/4163.pdf)
76. Gabriel C, Blome S, Malogolovkin A, Parilov S, Kolbasov D, Teifke JP, et al. Characterization of African swine fever virus Caucasus isolate in European wild boars. *Emerg Infect Dis*. 2011;17:2342–5.
77. Guinat C, Reis A, Netherton CL, Goatley L, Pfeiffer DU, Dixon L. Dynamics of African swine fever virus shedding and excretion in domestic pigs infected by intramuscular inoculation and contact transmission. *Vet Res*. 2014;45:93.
78. Pietschmann J, Guinat C, Beer M, Pronin V, Tauscher K, Petrov A, et al. Course and transmission characteristics of oral low-dose infection of domestic pigs and European wild boar with a Caucasian African swine fever virus isolate. *Arch Virol*. 2015;160:1657–67.
79. Kurinnov VV, Belyanin SA, Vasilyev AP, Gazaev IK, Gogin AE, Kolbasov DV. Results of multiple laboratory screening of samples from wild boars in the populations of African swine fever risk in Smolensk region (2013-2014). In: *Workshop on Laboratory Diagnosis of African and Classical Swine Fever (ASF and CSF)*. Madrid, Spain: Centro de Investigación en Sanidad Animal CISA-INIA, Valdeolmos 28130; 2014.
80. Vlasova N, Varentsova A, Shevchenko I, Zhukov I, Remyga S, GavriloVA V, et al. Comparative Analysis of Clinical and Biological Characteristics of African Swine Fever Virus Isolates from 2013 Year Russian Federation. *British Microbiology Research Journal*. 2015;5:203–15.
81. Mur L, Igolkin A, Varentsova A, Pershin A, Remyga S, Shevchenko I, Zhukov I, Sánchez-Vizcaíno JM. Detection of African Swine Fever Antibodies in Experimental and Field Samples from the Russian Federation: Implications for Control. *Transbound Emerg Dis*. 2014 Nov 30. doi: 10.1111/tbed.12304.
82. Iglesias I, Muñoz MJ, Montes F, Perez A, Gogin A, Kolbasov D, de la Torre A. (2015): Reproductive ratio for the local spread of African swine fever in wild boars in the Russian Federation. *Transbound Emerg Dis*. 2015 Feb 19. doi: 10.1111/tbed.12337.
83. Vergne T, Guinat C, Petkova P, Gogin A, Kolbasov D, Blome S, Molia S, Pinto Ferreira J, Wieland B, Nathues H, and Pfeiffer DU. Attitudes and beliefs of pig farmers and wild boar hunters towards reporting of African Swine fever in Bulgaria, Germany and the Western part of the Russian Federation. *TBED*, 6. 2014; doi: 10.1111/tbed.12254
84. Arias, M, Bellini, S, Westergaard, J. Community Veterinary Emergency Team in Lithuania. SCoFCAH (Standing Committee of Food Chain and Animal Health, European Commission. Brussels, EC, August, 14th,2014. [http://ec.europa.eu/food/animals/docs/regcom\\_ahw\\_20140821\\_pres\\_asf\\_lithuania\\_cvct.pdf](http://ec.europa.eu/food/animals/docs/regcom_ahw_20140821_pres_asf_lithuania_cvct.pdf)
85. Sánchez-Vizcaíno JM, Mur L. African swine fever diagnosis update. *Dev Biol (Basel)*. 2013;135:159–65.
86. World Organisation for Animal Health (OIE): 2014b. African swine fever. In: *Manual of diagnostic tests and vaccines for terrestrial animals 2013; Vol 2, Chapter 2.8.1* [cited 2014 Jan 8]. [http://www.oie.int/fileadmin/Home/eng/Health\\_standards/tahm/2.08.01\\_ASF.pdf](http://www.oie.int/fileadmin/Home/eng/Health_standards/tahm/2.08.01_ASF.pdf)
87. Gallardo C, Nieto R, Soler A, Pelayo V, Fernández-Pinero J, Markowska-Daniel I, et al. Assessment of African swine fever diagnostic techniques as a response to the epidemic outbreaks in Eastern European Union countries: How to improve surveillance and control programmes. *J Clin Microbiol*. 2015 Jun 3. pii: JCM.00857-15. [Epub ahead of print] PubMed
88. Gallardo C, Soler A, Nieto R, Carrascosa AL, De Mia GM, Bishop RP, et al. Comparative evaluation of novel African swine fever virus (ASF) antibody detection techniques derived from specific ASF viral genotypes with the OIE internationally prescribed serological tests. *Vet Microbiol*. 2013;162:32–43.
89. Oura CA, Edwards L, Batten CA. Virological diagnosis of African swine fever—comparative study of available tests. *Virus Res*. 2013;173:150–8.
90. Sánchez EG, Quintas A, Nogal M, Castelló A, Revilla Y. African swine fever virus controls the host transcription and cellular machinery of protein synthesis. *Virus Res*. 2013;173(1):58–75.

91. Correia S, Ventura S, Parkhouse RM. Identification and utility of innate immune system evasion mechanisms of ASFV. *Virus Res.* 2013;173(1):87–100.
92. Takamatsu HH, Denyer MS, Lacasta A, Stirling CM, Argilaguuet JM, Netherton CL, et al. Cellular immunity in ASFV responses. *Virus Res.* 2013;173(1):110–21.
93. Escribano JM, Galindo I, Alonso C. Antibody-mediated neutralization of African swine fever virus: myths and facts. *Virus Res.* 2013;173(1):101–9.
94. Mulumba-Mfumu LK, Goatley LC, Saegerman C, Takamatsu HH, Dixon LK. Immunization of African Indigenous Pigs with Attenuated Genotype I African Swine Fever Virus OURT88/3 Induces Protection Against Challenge with Virulent Strains of Genotype I. *Transbound Emerg Dis.* 2015;18.
95. King K, Chapman D, Argilaguuet JM, Fishbourne E, Hutet E, Cariolet R, et al. Protection of European domestic pigs from virulent African isolates of African swine fever virus by experimental immunisation. *Vaccine.* 2011;29(28):4593–600.
96. O'Donnell V, Holinka LG, Krug PW, Gladue DP, Carlson J, Sanford B, et al. African Swine Fever Virus Georgia 2007 with a Deletion of Virulence-Associated Gene 9GL (B119L), when Administered at Low Doses, Leads to Virus Attenuation in Swine and Induces an Effective Protection against Homologous Challenge. *J Virol.* 2015;89(16):8556–66.
97. O'Donnell V, Holinka LG, Gladue DP, Sanford B, Krug PW, Lu X, et al. African Swine Fever Virus Georgia Isolate Harboring Deletions of MGF360 and MGF505 Genes Is Attenuated in Swine and Confers Protection against Challenge with Virulent Parental Virus. *J Virol.* 2015;89(11):6048–56.
98. Argilaguuet JM, Pérez-Martín E, Nofrarías M, Gallardo C, Accensi F, Lacasta A, et al. DNA vaccination partially protects against African swine fever virus lethal challenge in the absence of antibodies. *PLoS One.* 2012;7:9.
99. Argilaguuet JM, Pérez-Martín E, Gallardo C, Salguero FJ, Borrego B, Lacasta A, et al. Enhancing DNA immunization by targeting ASFV antigens to SLA-II bearing cells. *Vaccine.* 2011;29(33):5379–85.
100. Abrams CC, Goatley L, Fishbourne E, Chapman D, Cooke L, Oura CA, et al. Deletion of virulence associated genes from attenuated African swine fever virus isolate OUR T88/3 decreases its ability to protect against challenge with virulent virus. *Virology.* 2013;443(1):99–105. doi:10.1016/j.virol.2013.04.028. Epub 2013 May 28.
101. European Council. 2002. Council Directive 2002/60/EC of 27 June 2002 laying down specific provisions for the control of African swine fever and amending Directive 92/119/EEC as regards Teschen disease and African swine fever (text with EEA relevance). European Council, Brussels, Belgium. <http://eur-lex.europa.eu/legal-content/EN/TXT/PDF/?uri=CELEX:32002L0060&from=EN>.
102. European Commission, Health and Consumers Directorate-General (7138/2013). Guidelines on surveillance and control of African swine fever in feral pigs and preventive measures for pig holdings. European Commission, Health and Consumers Directorate-General, Brussels, Belgium. [http://www.agri.ee/sites/default/files/content/toiduohutus/juhenddokument\\_jar](http://www.agri.ee/sites/default/files/content/toiduohutus/juhenddokument_jar)
103. The European Union has laid down prevention and control measures. The latest specific regionalisation measures that have been taken with respect to evolution of the ASF situation in the EU are included in Commission Implementing Decision of 9 October 2014 (2014/709/EU). 2014.

**Submit your next manuscript to BioMed Central and take full advantage of:**

- Convenient online submission
- Thorough peer review
- No space constraints or color figure charges
- Immediate publication on acceptance
- Inclusion in PubMed, CAS, Scopus and Google Scholar
- Research which is freely available for redistribution

Submit your manuscript at  
[www.biomedcentral.com/submit](http://www.biomedcentral.com/submit)

