

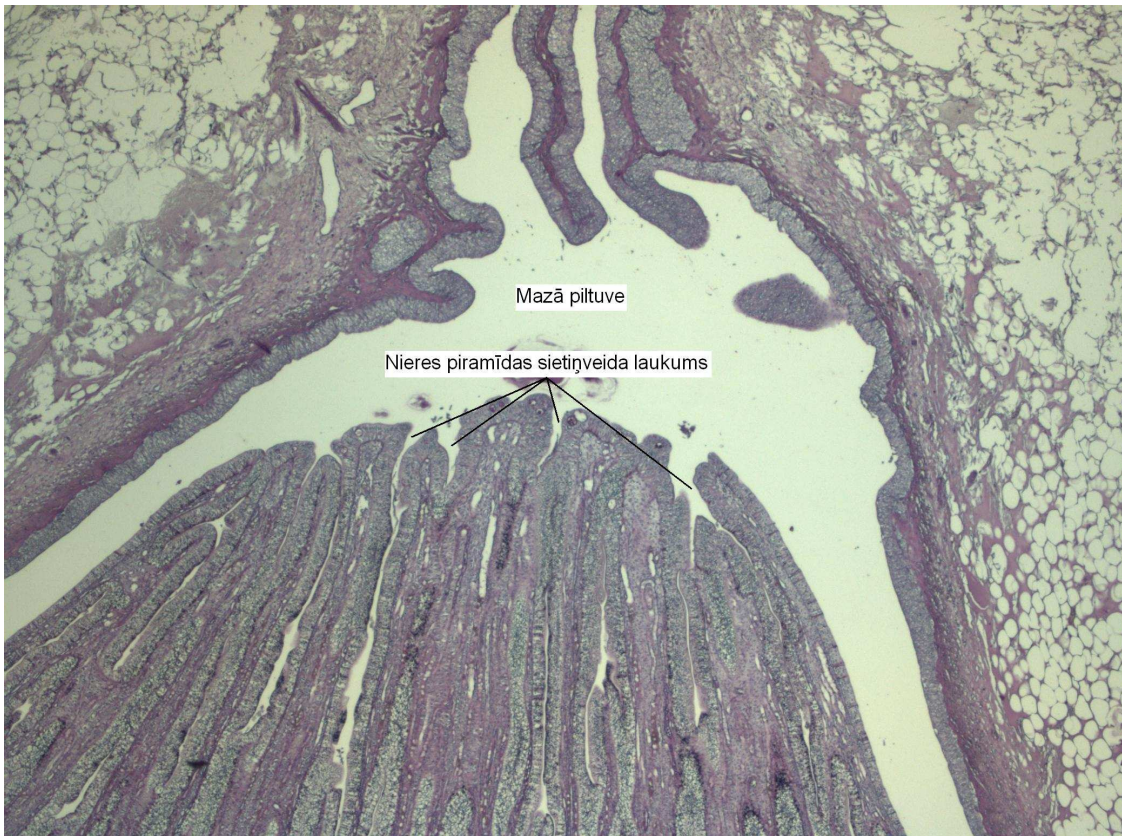
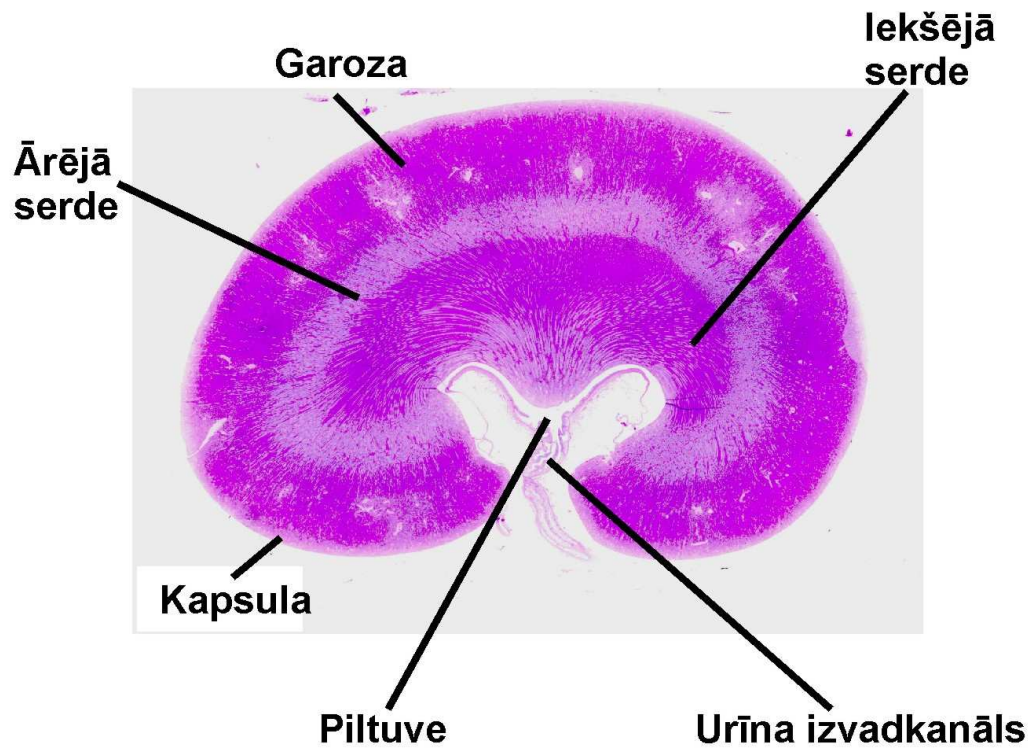
Speciālās histoloģijas kurss

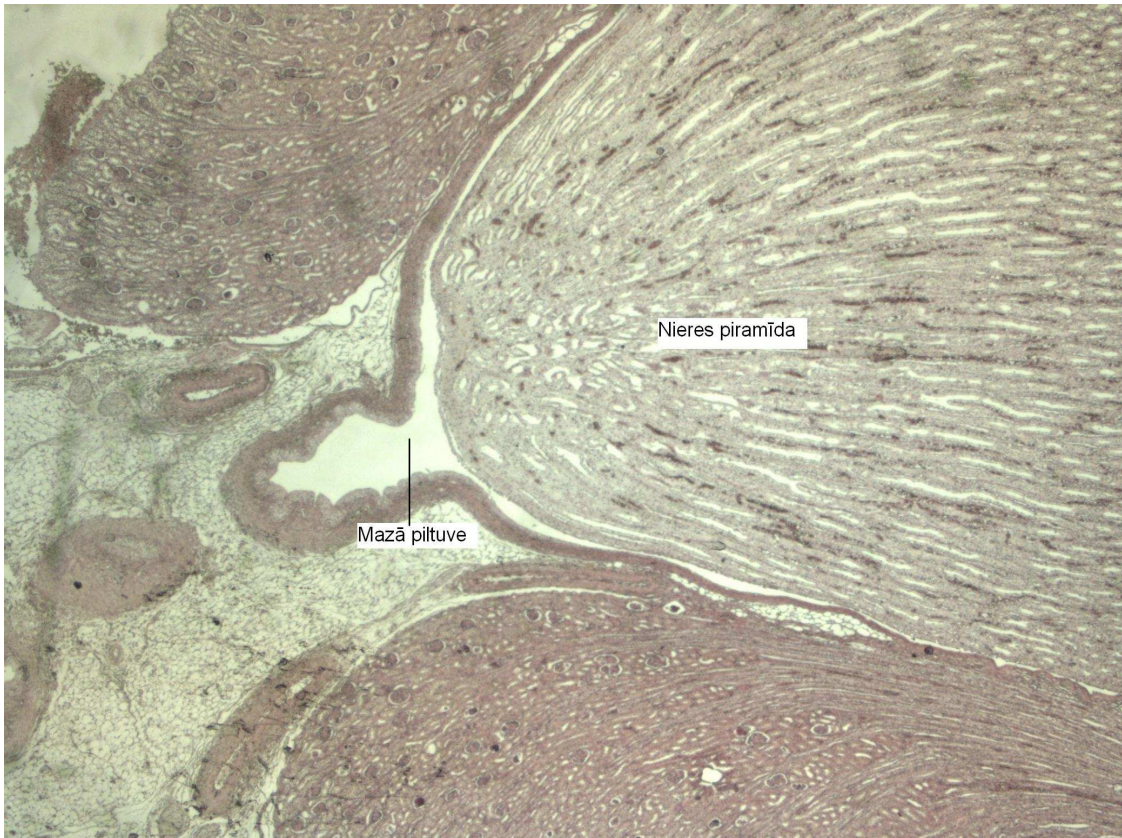
Laboratorijas darbos izmantoto preparātu attēlu atlants

Rīga 2011.

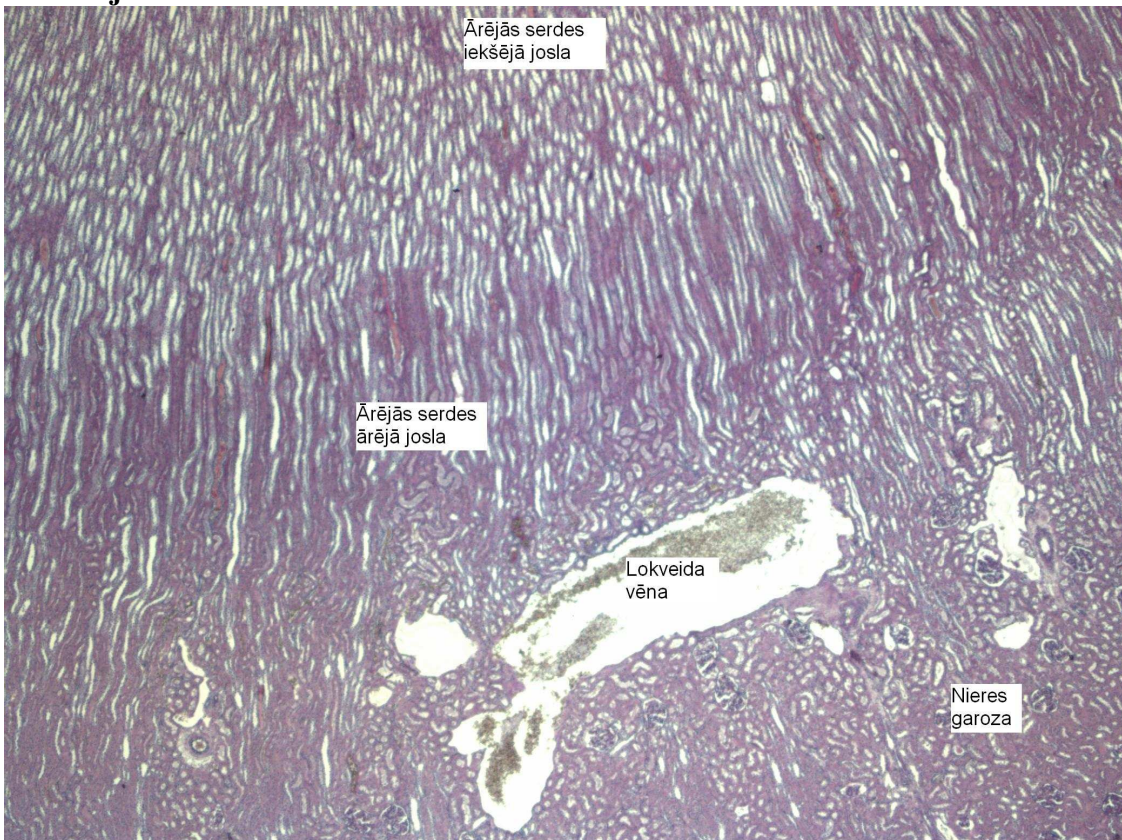
7. nodarbība Urīna izvadīšanas sistēma.

1. – Niere.

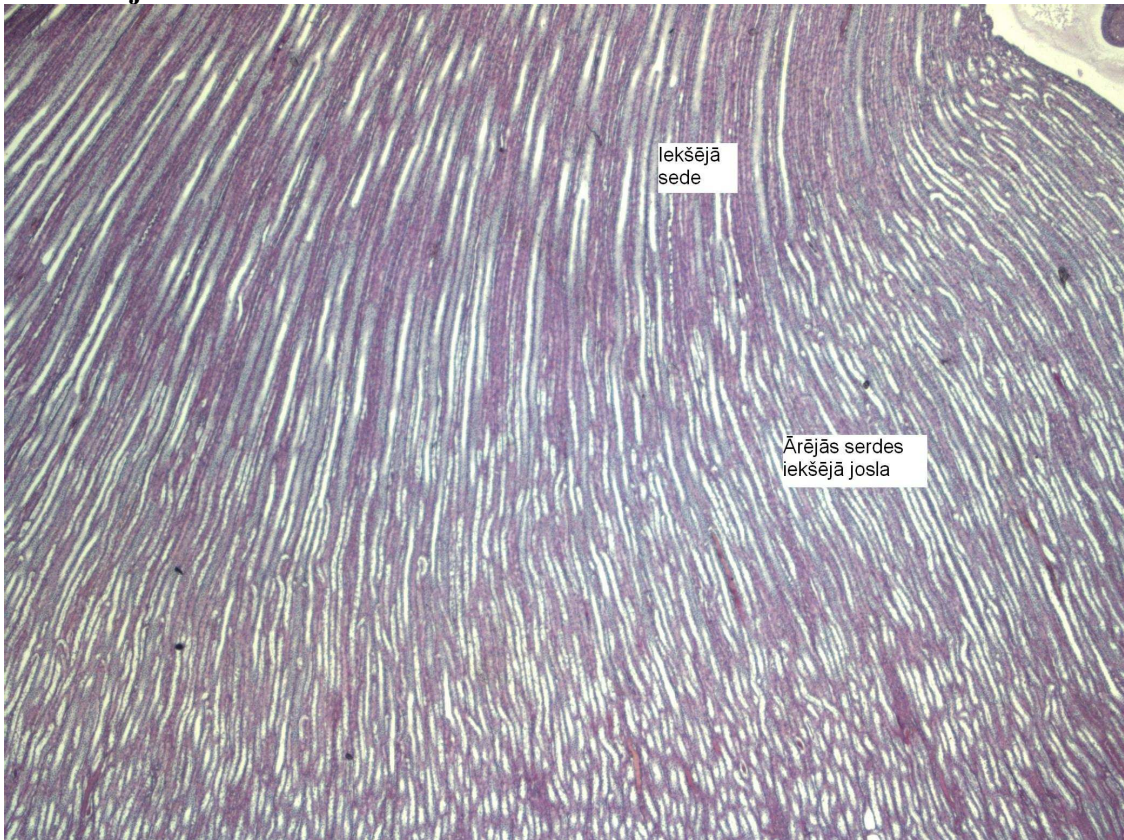


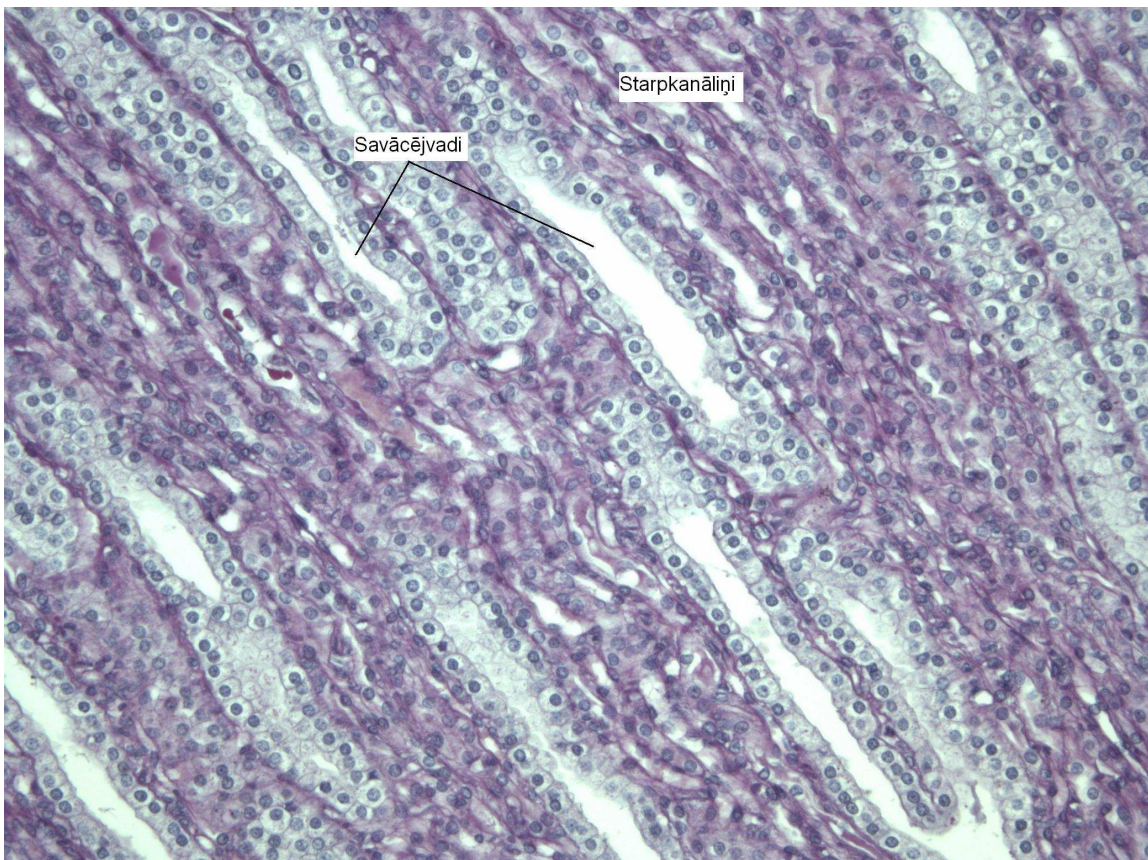
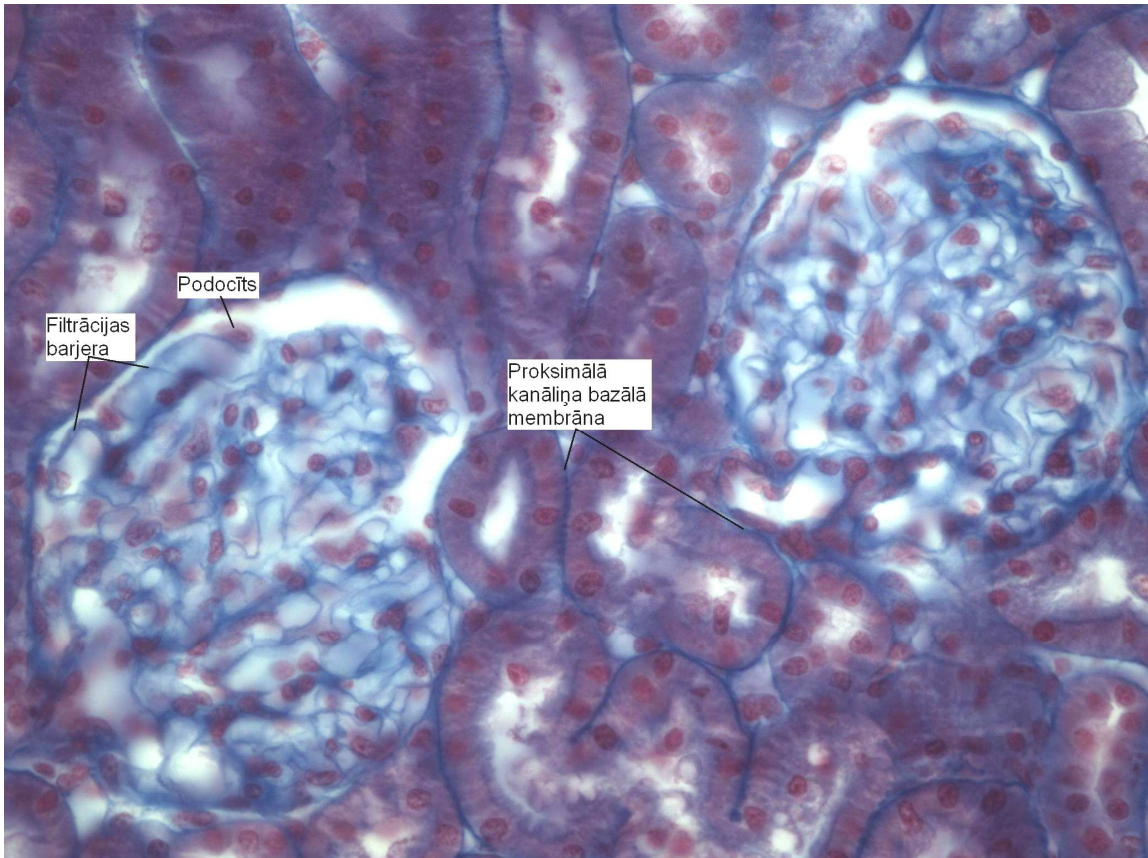


2. – Ārējā serde.

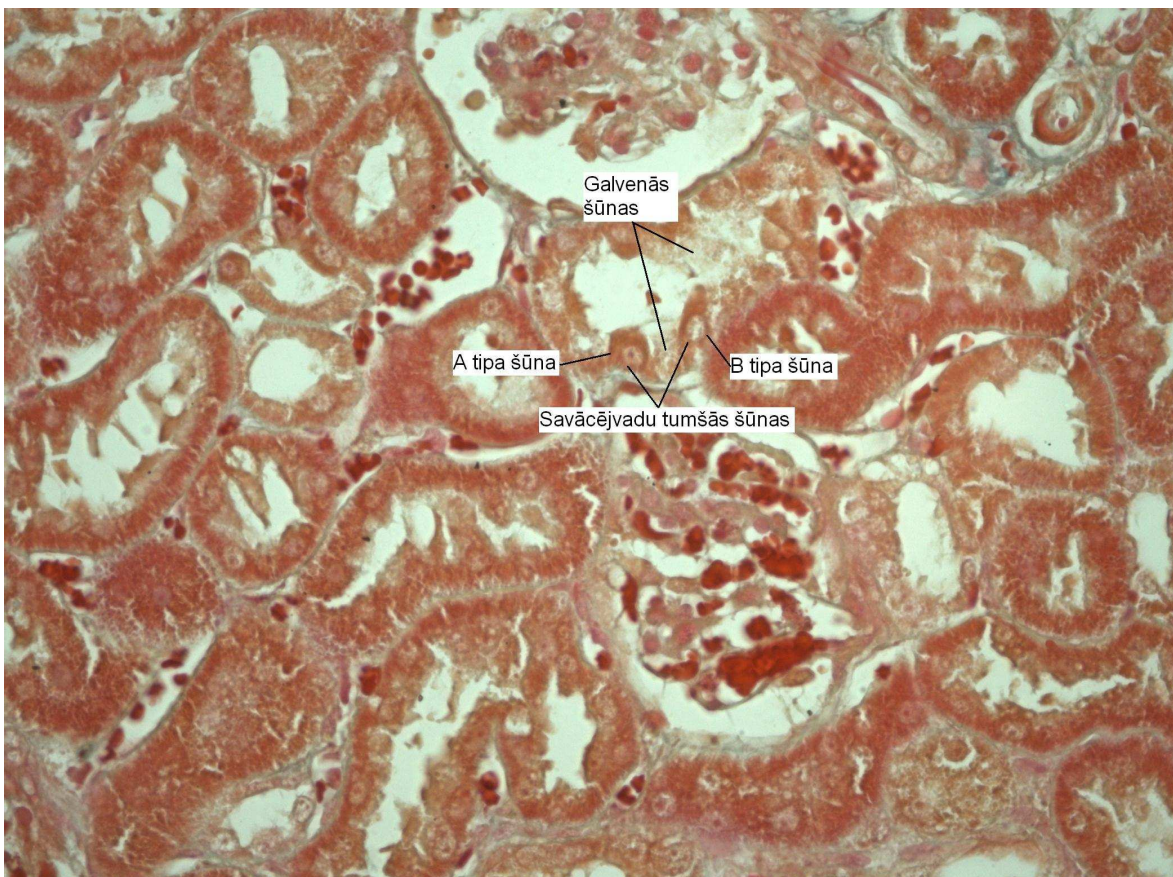
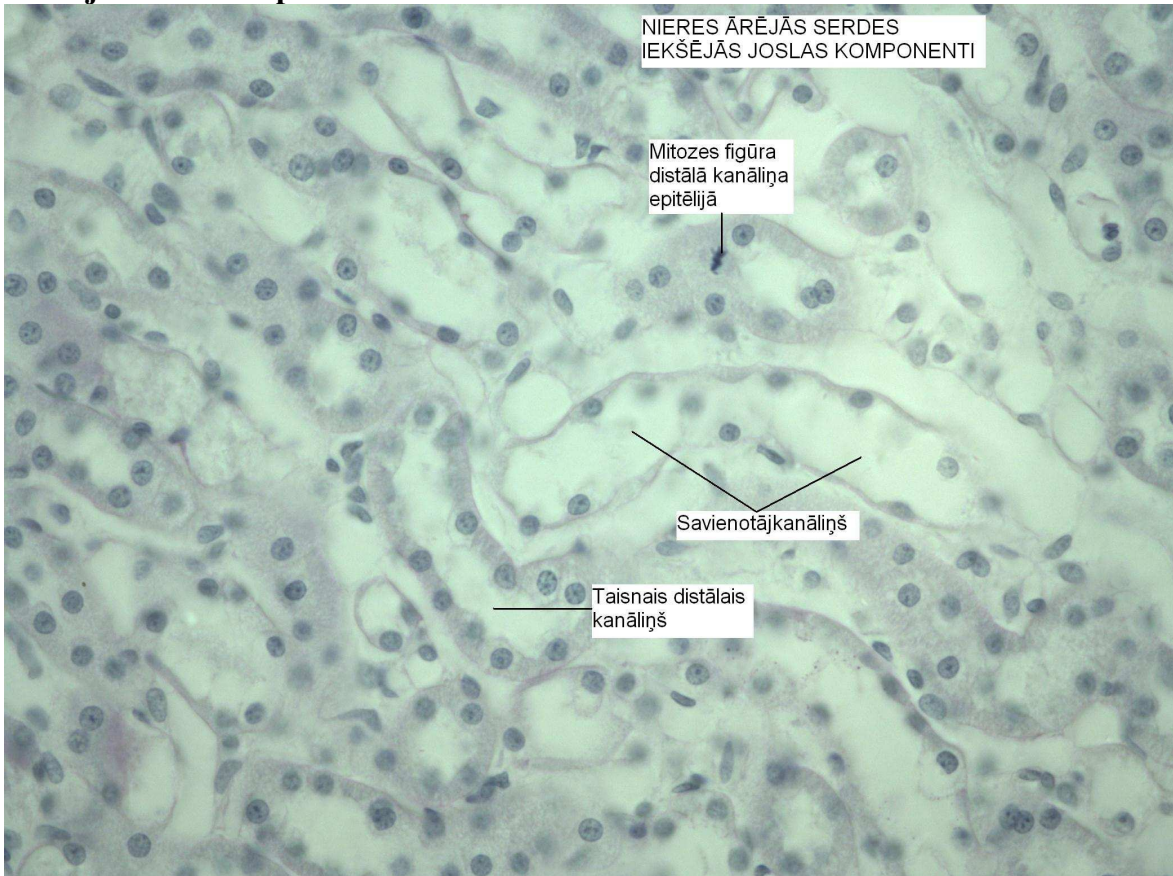


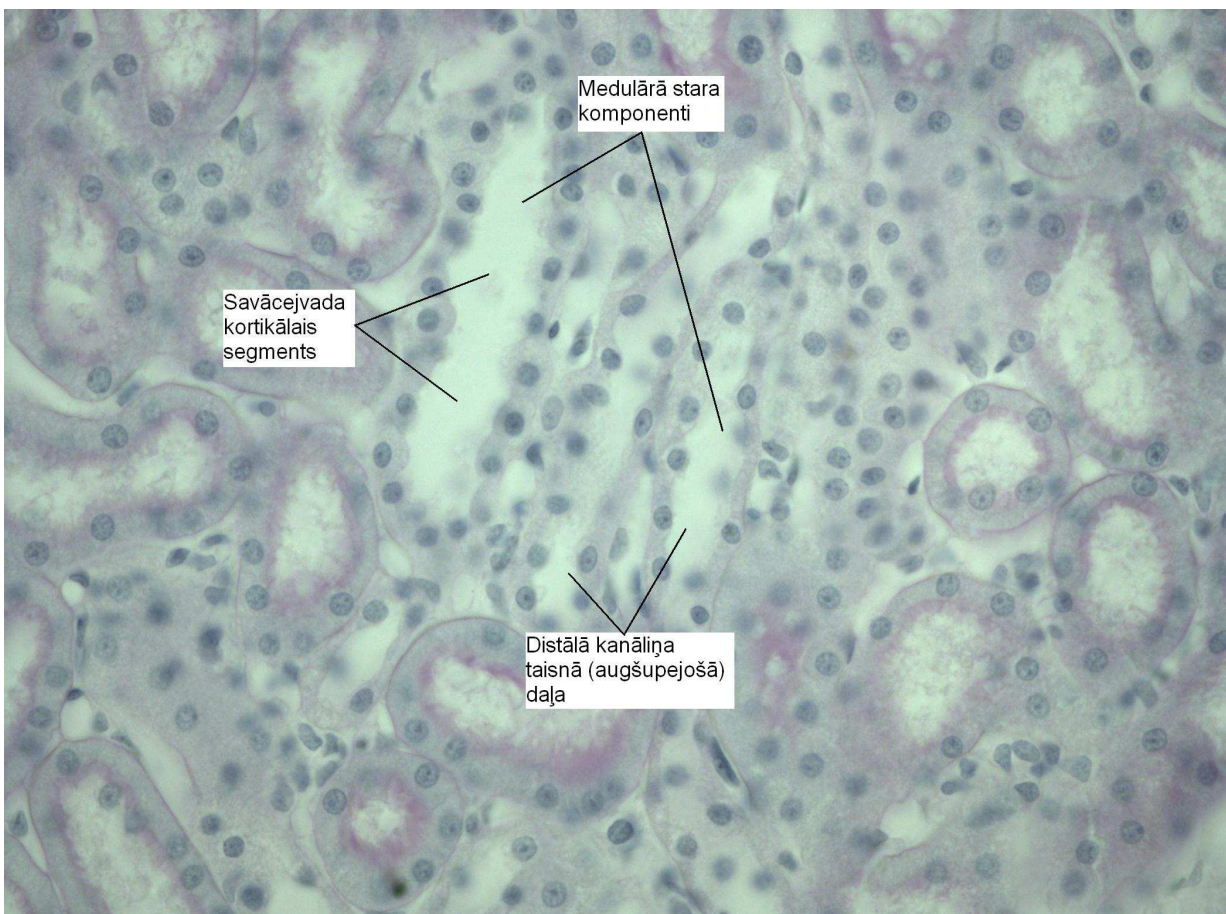
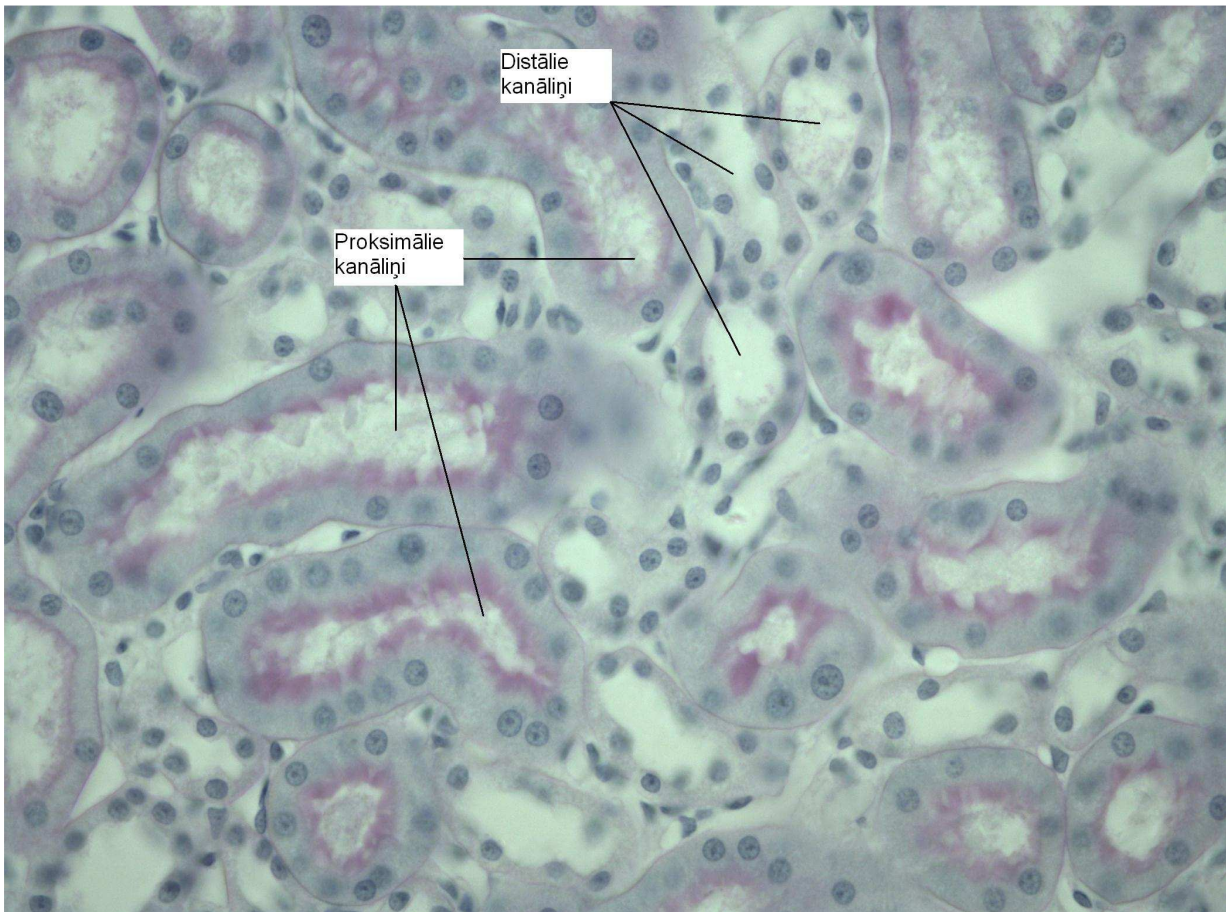
3. – Iekšējā serde.

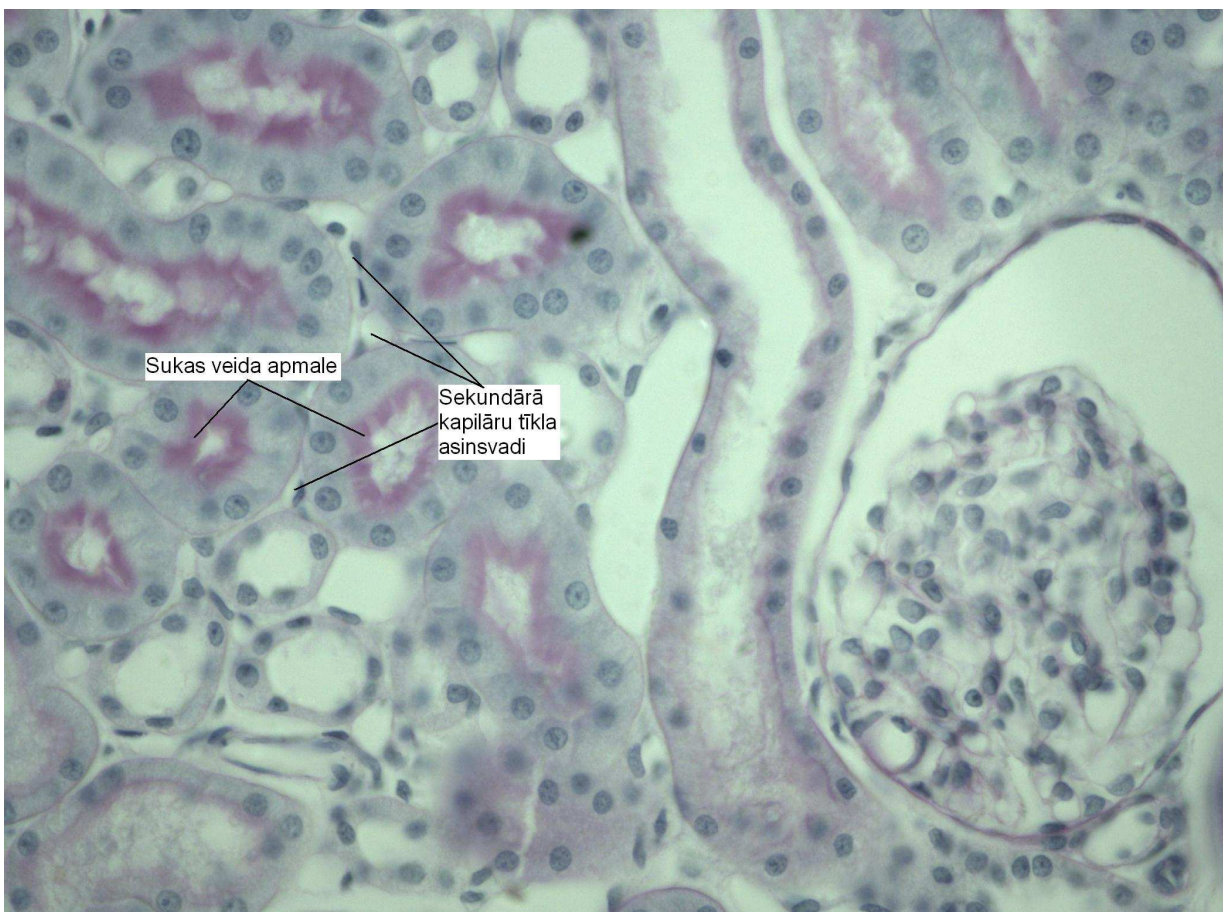
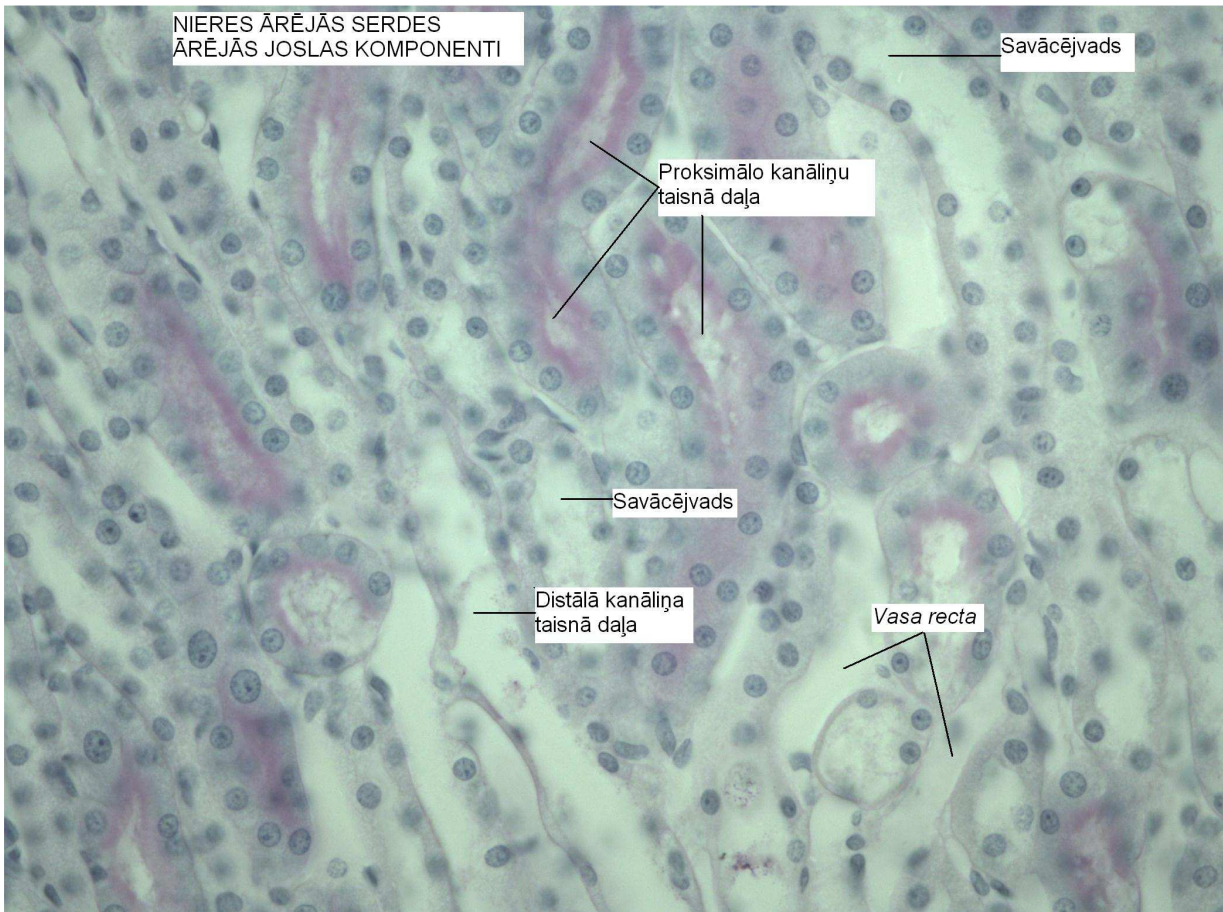


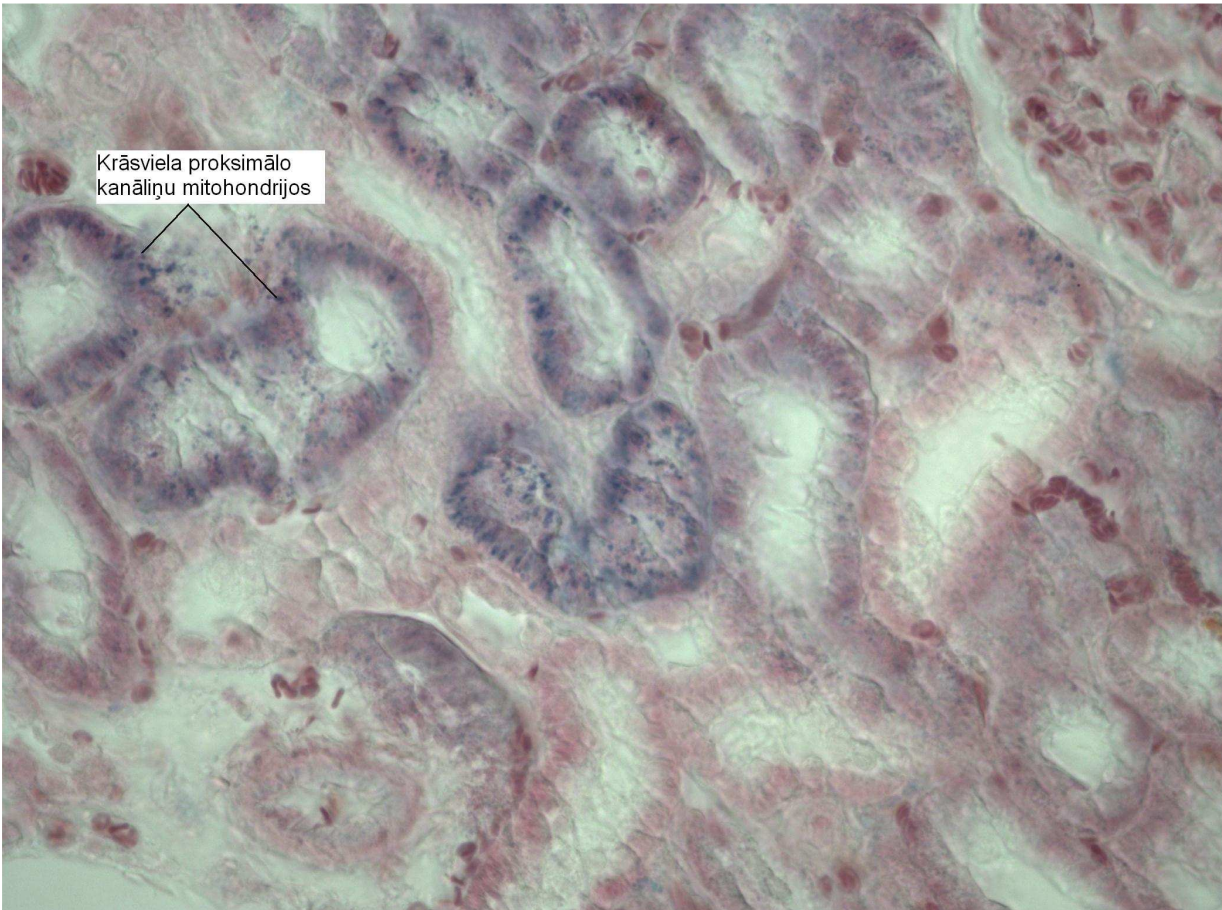


4. Ārējā serdes komponenti.

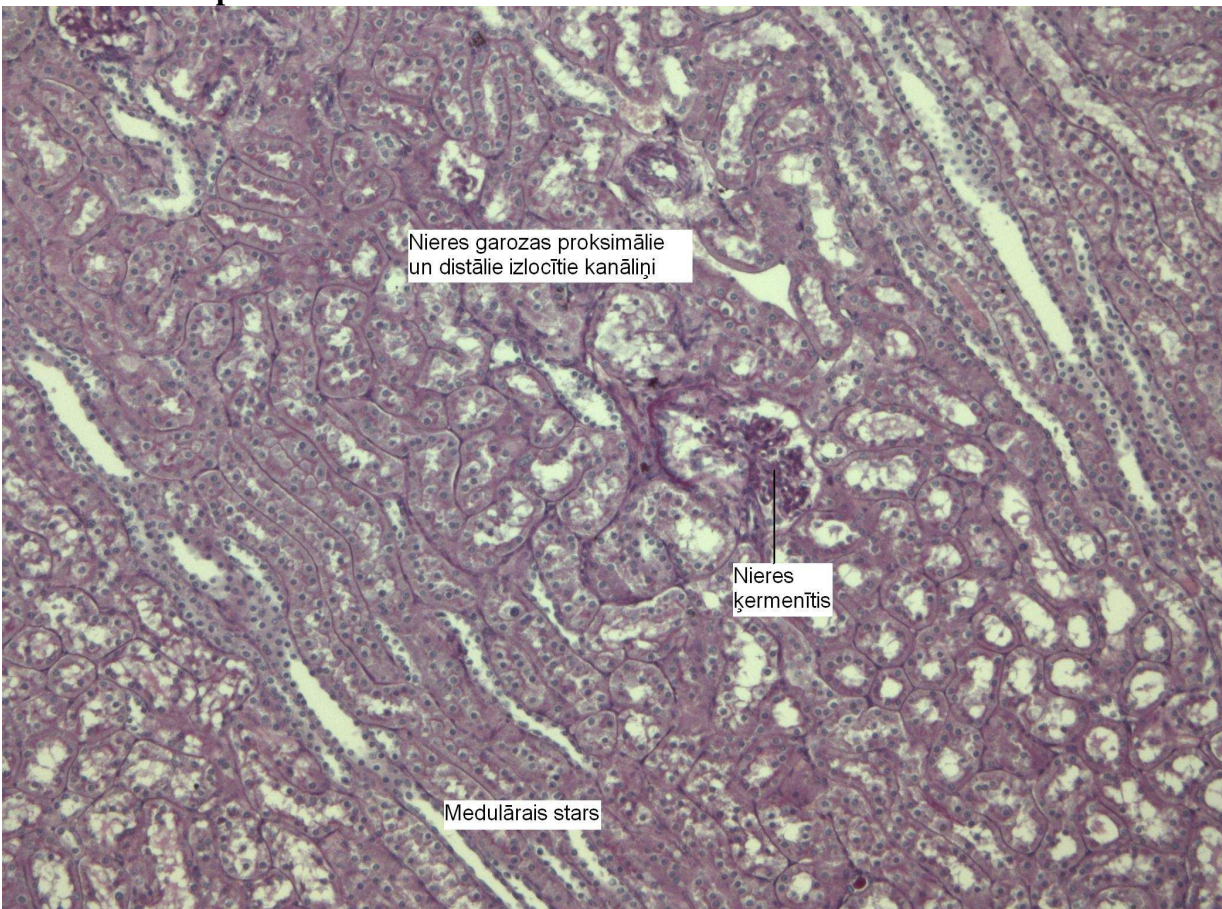


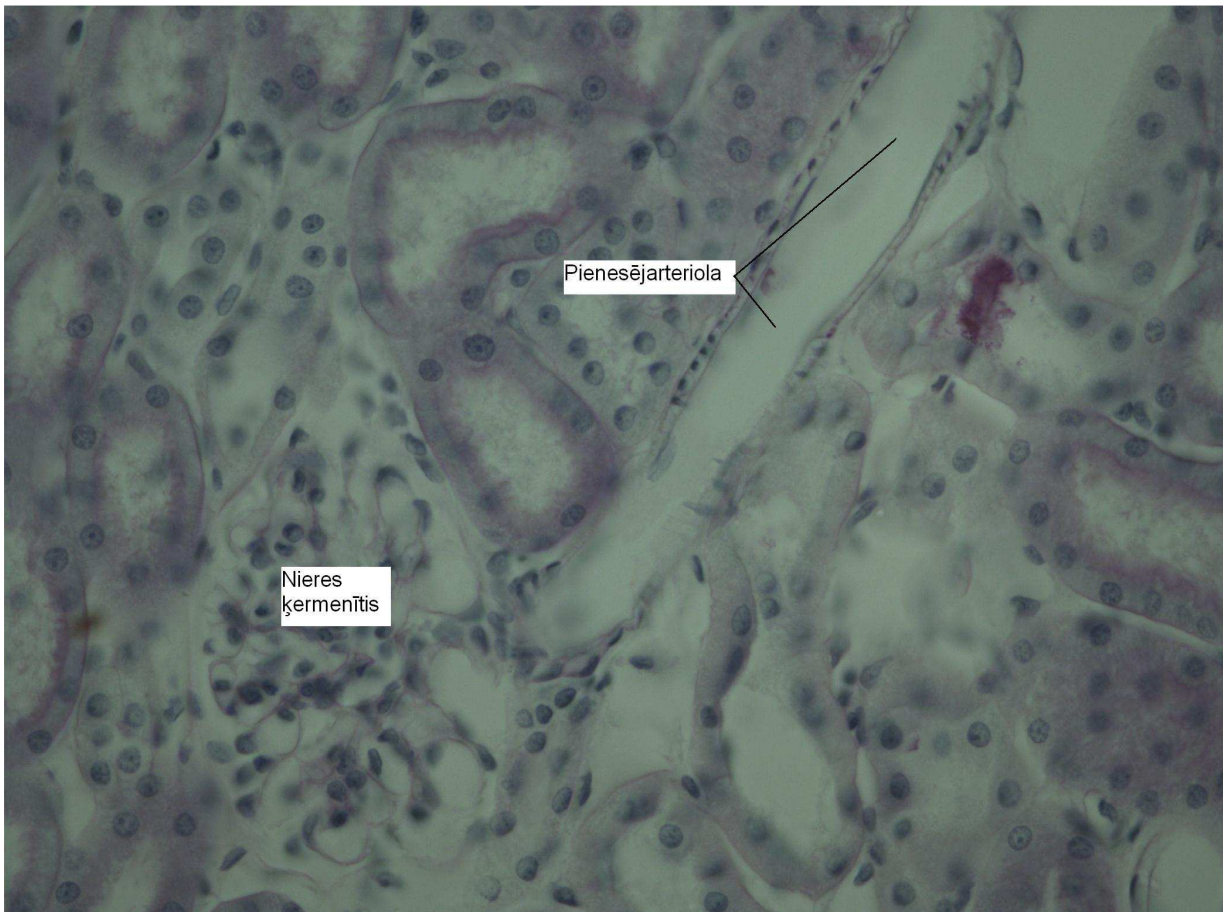




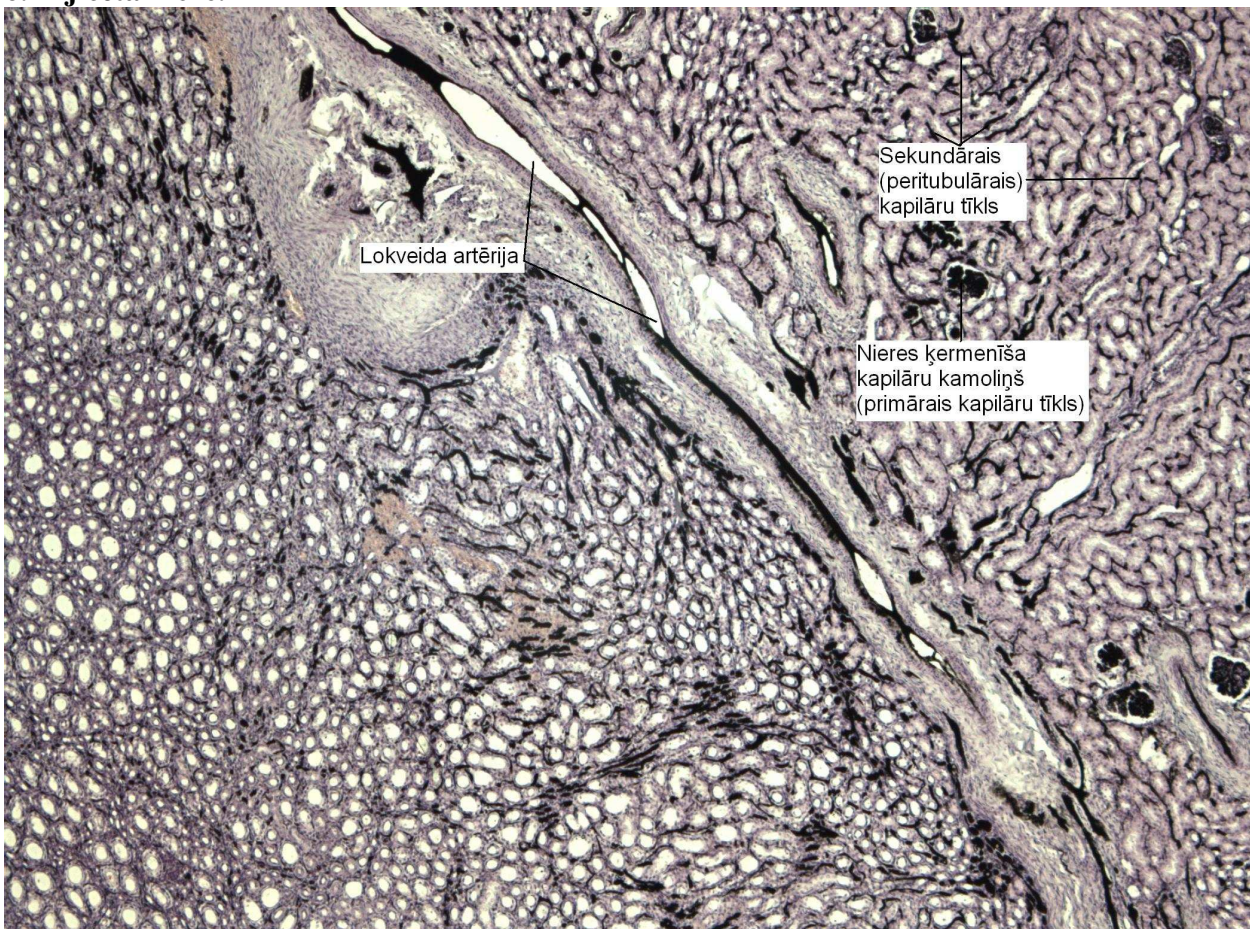


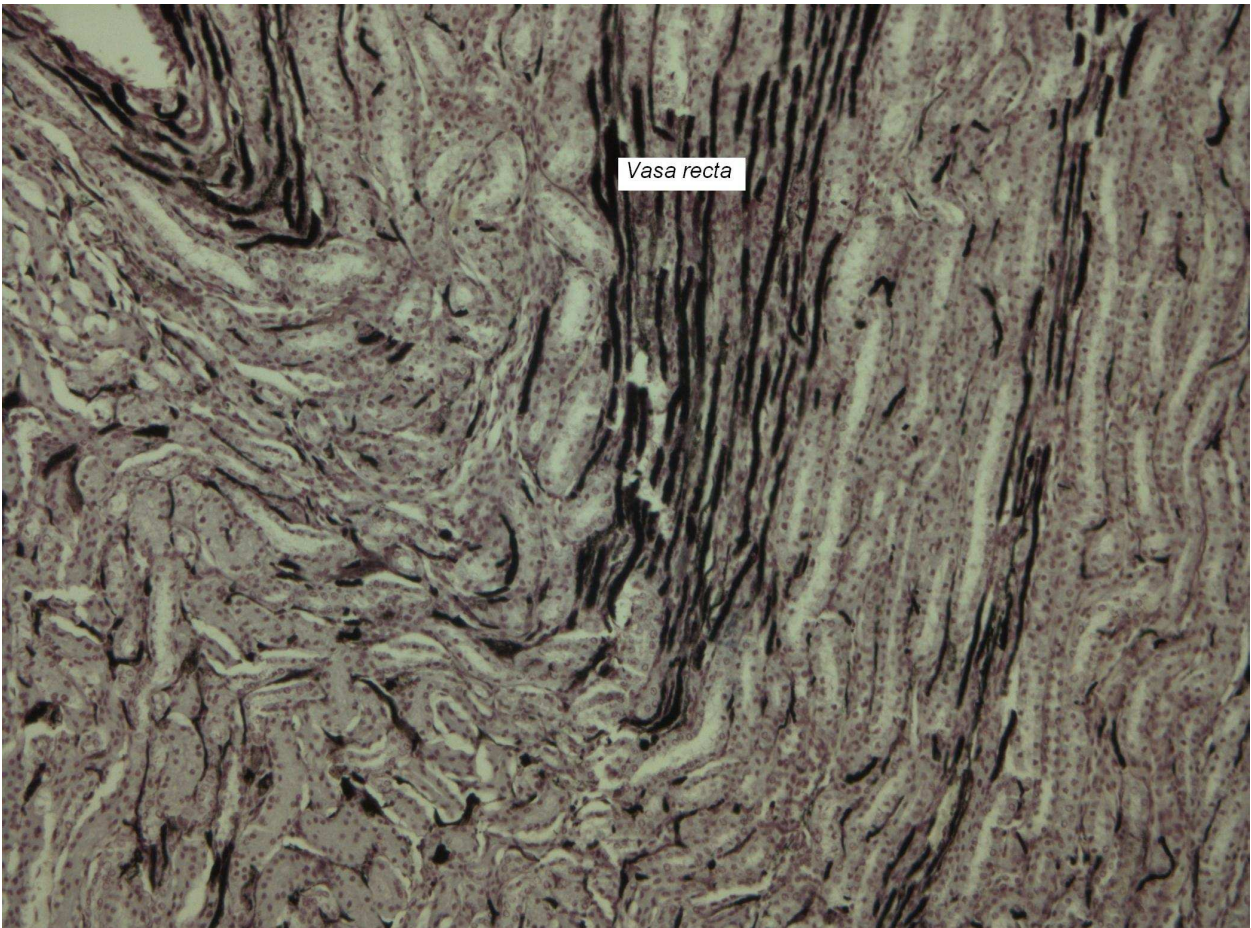
5. Garozas komponenti.





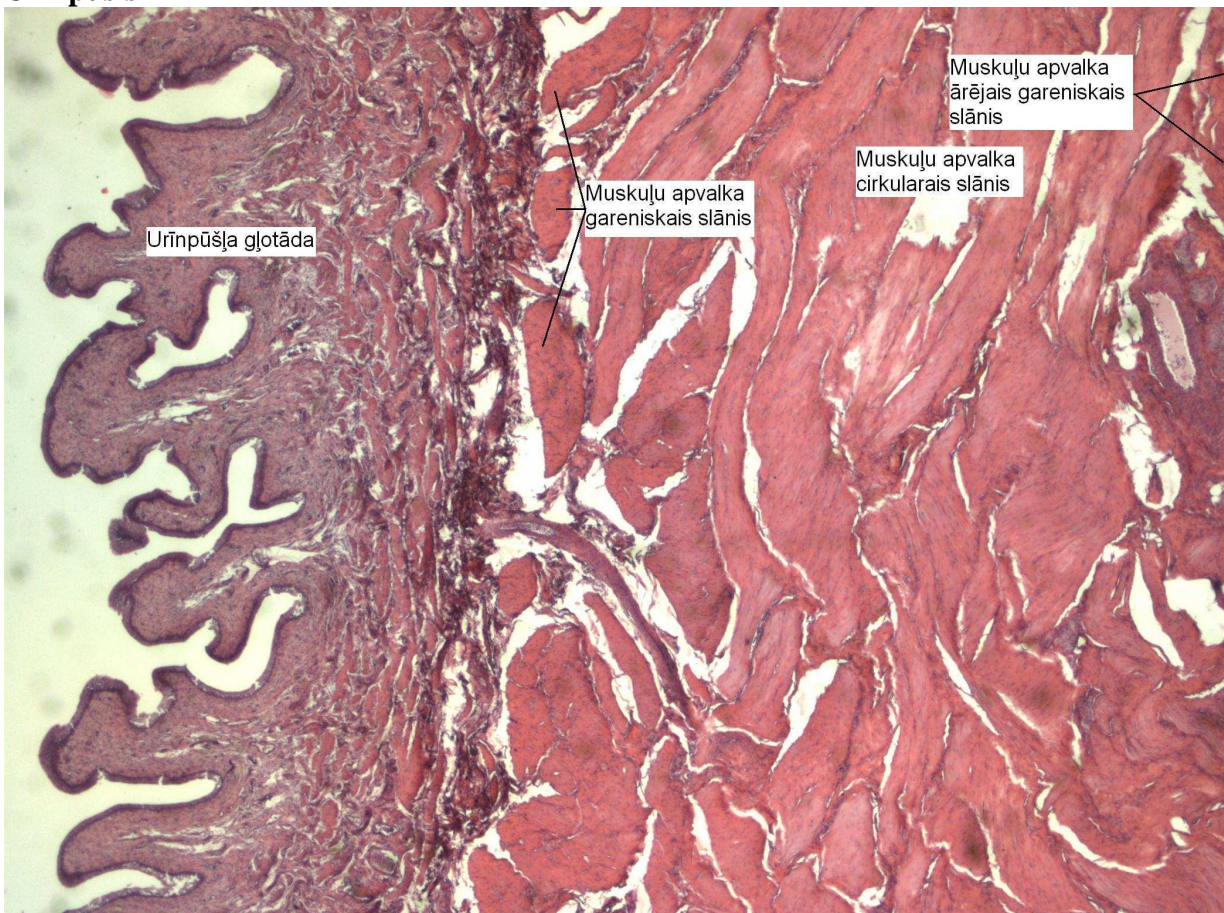
6. Injicēta niere.







Urīnpūsis



Urīnvads

