

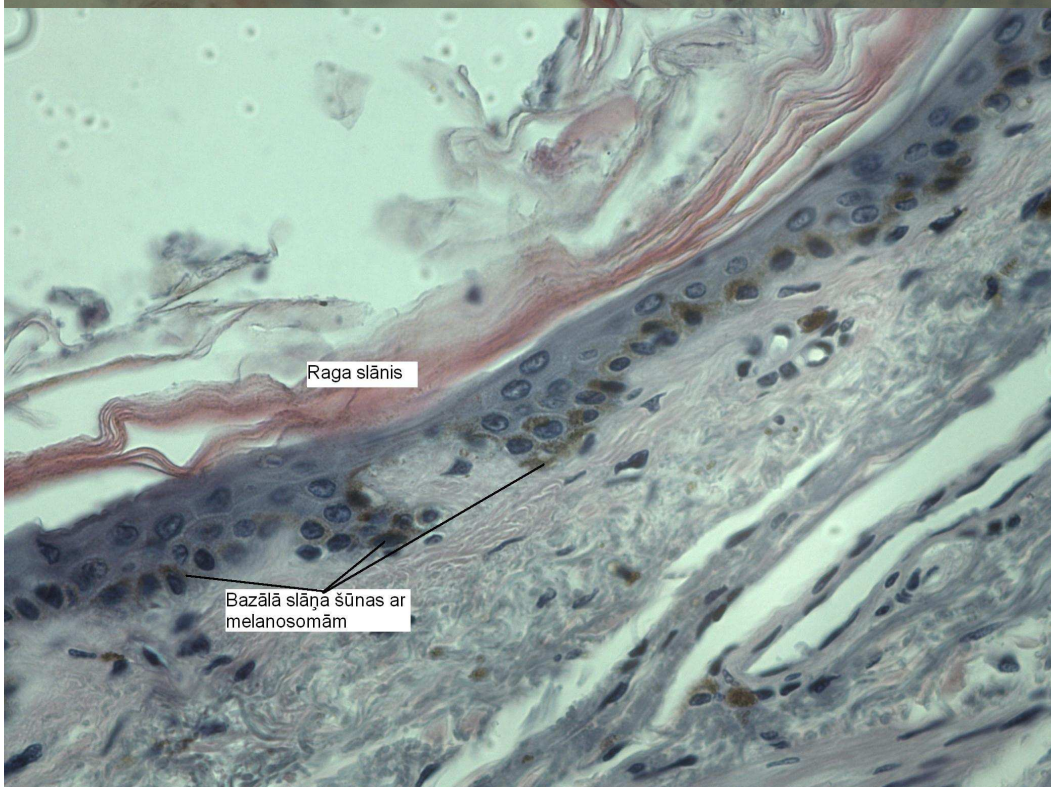
Speciālās histoloģijas kurss

Laboratorijas darbos izmantoto preparātu attēlu atlants

Rīga 2011.

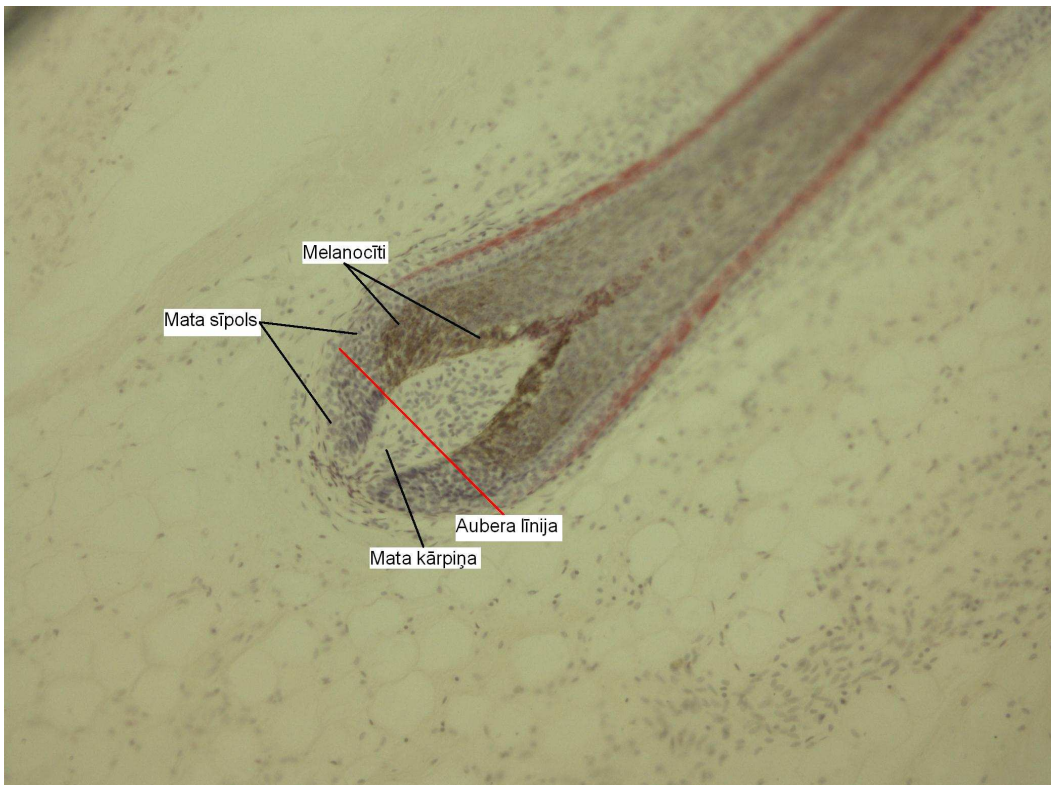
5. nodarbība Āda un tās derivāti.

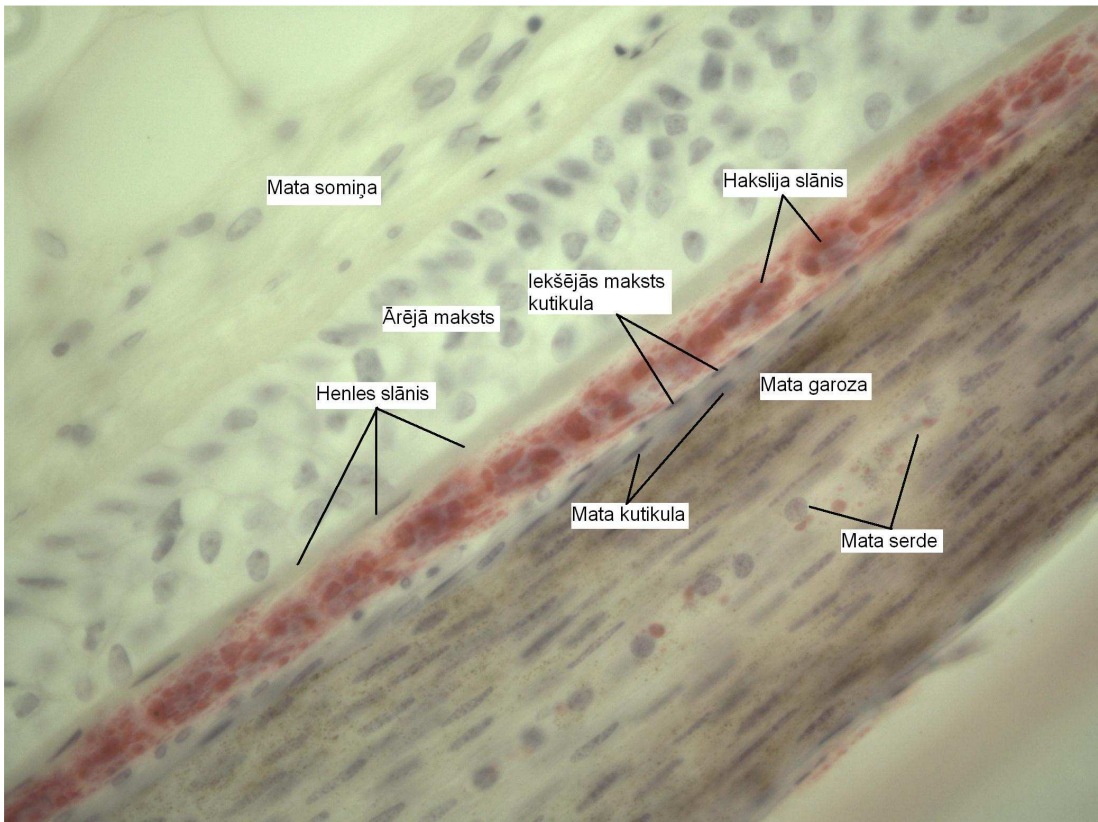
1. – Plāna āda.





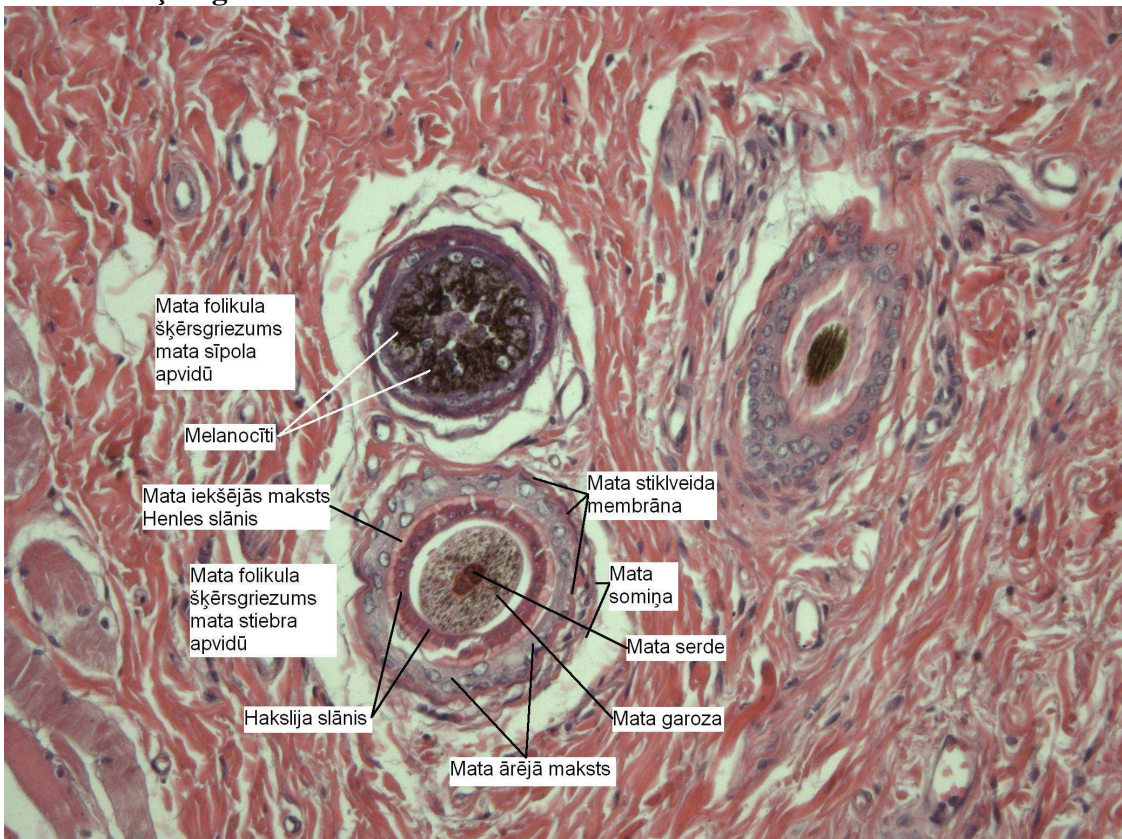
2. – Mata uzbūve.



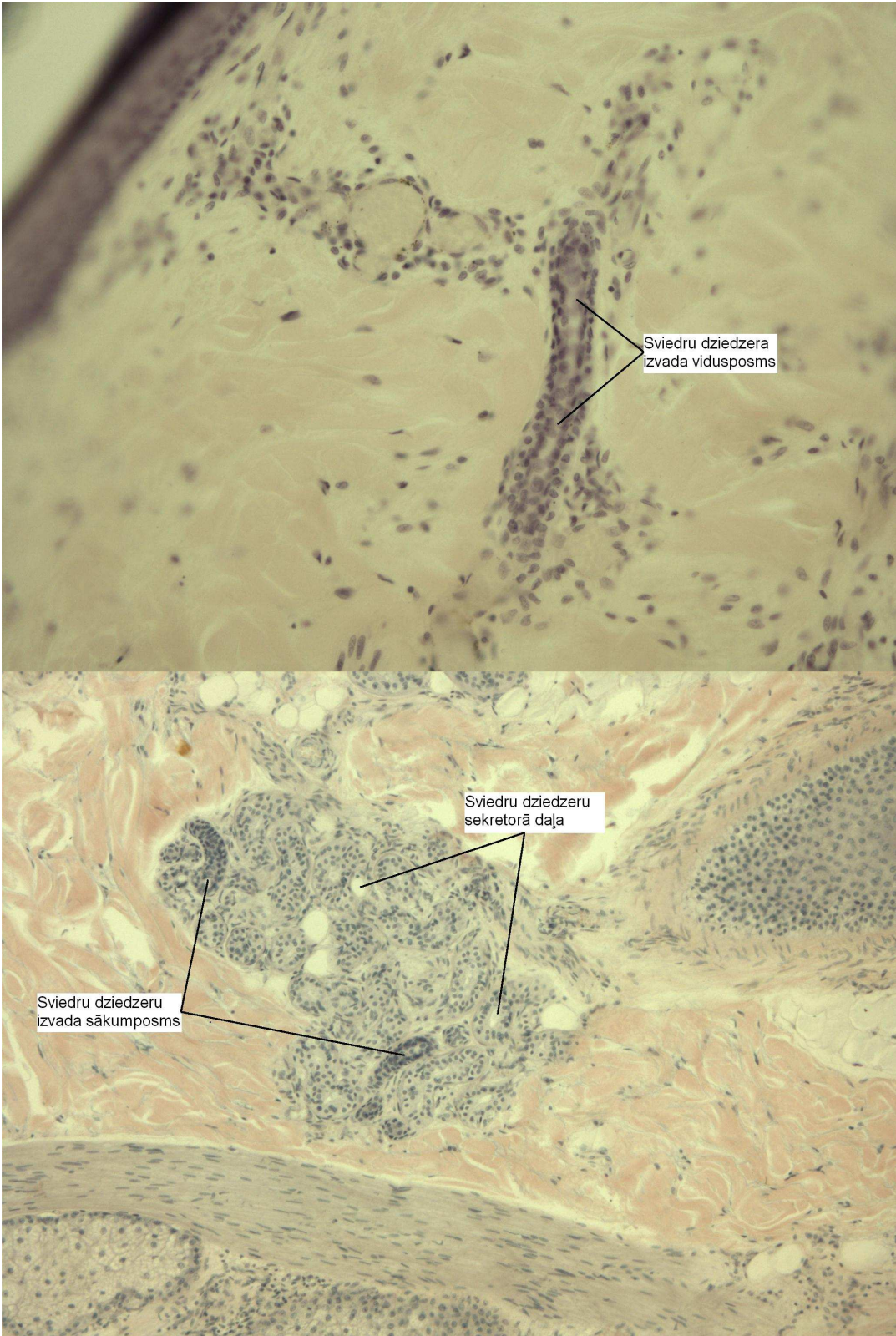




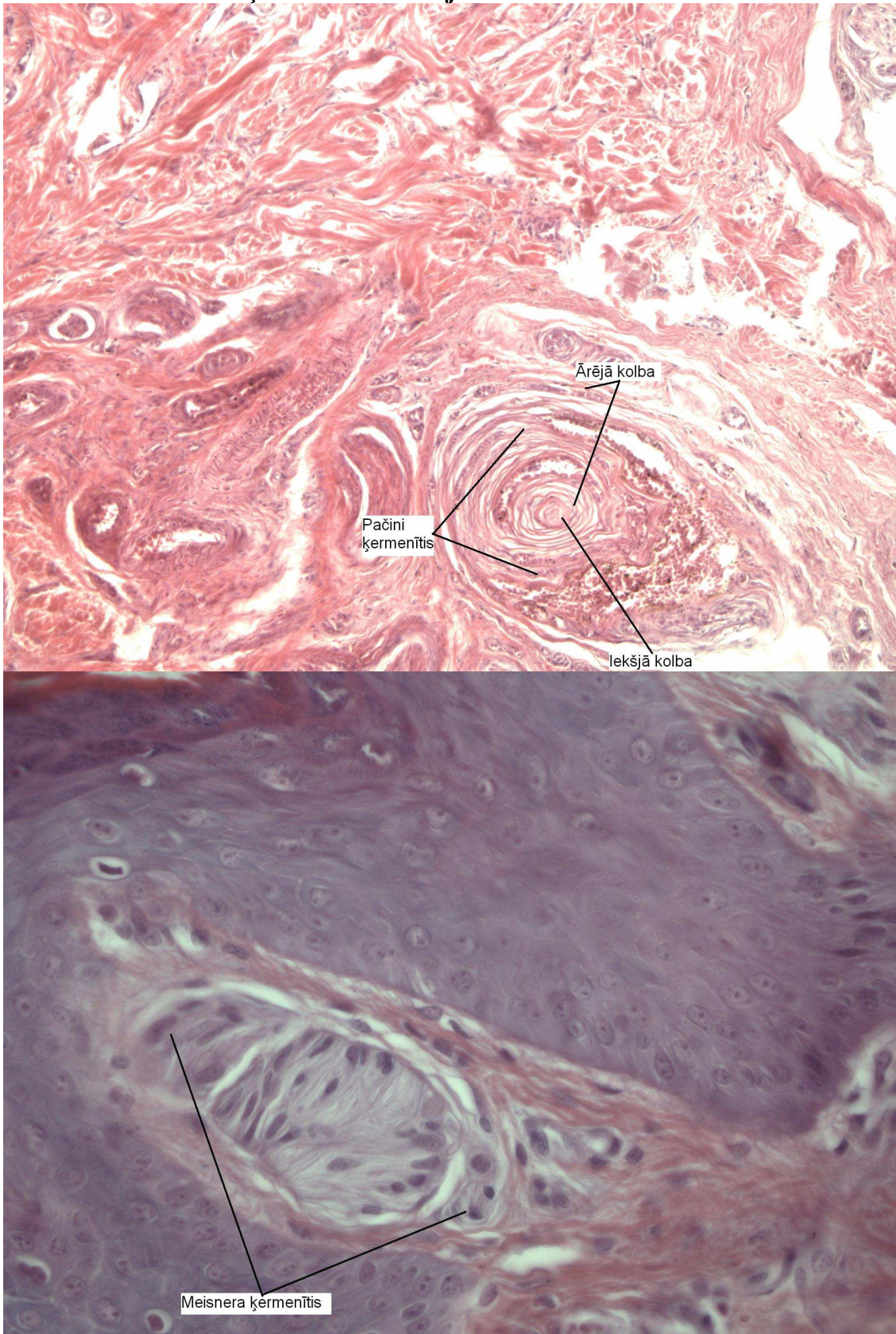
3. – Mata šķērsriezums.



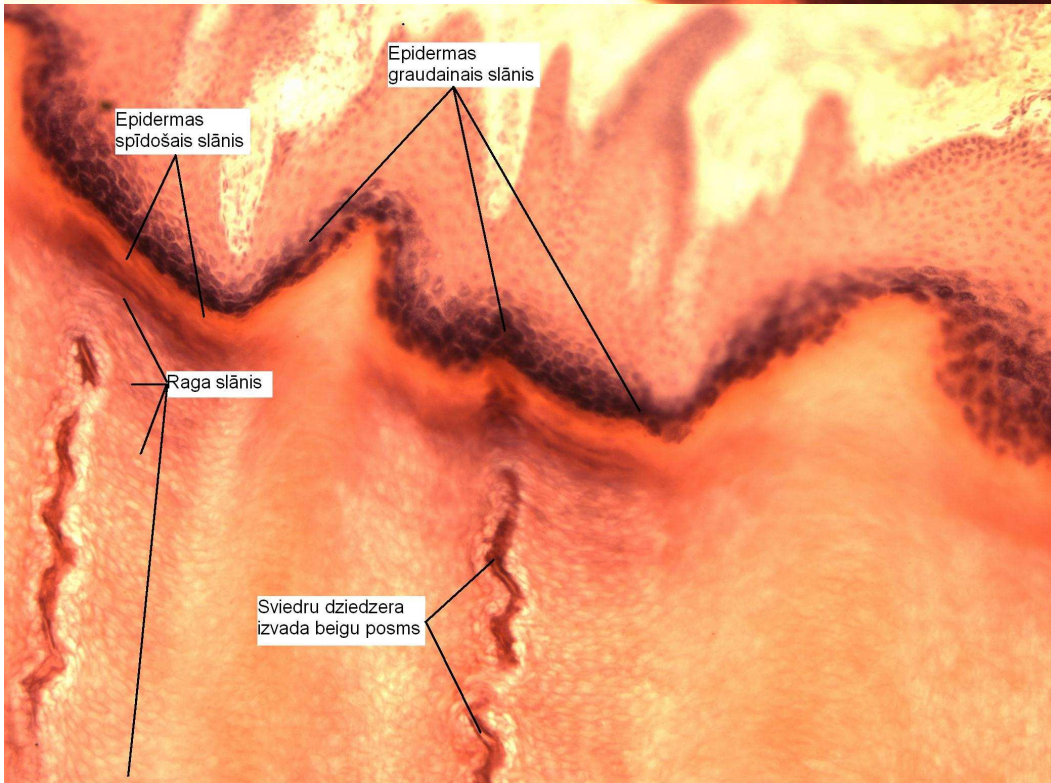
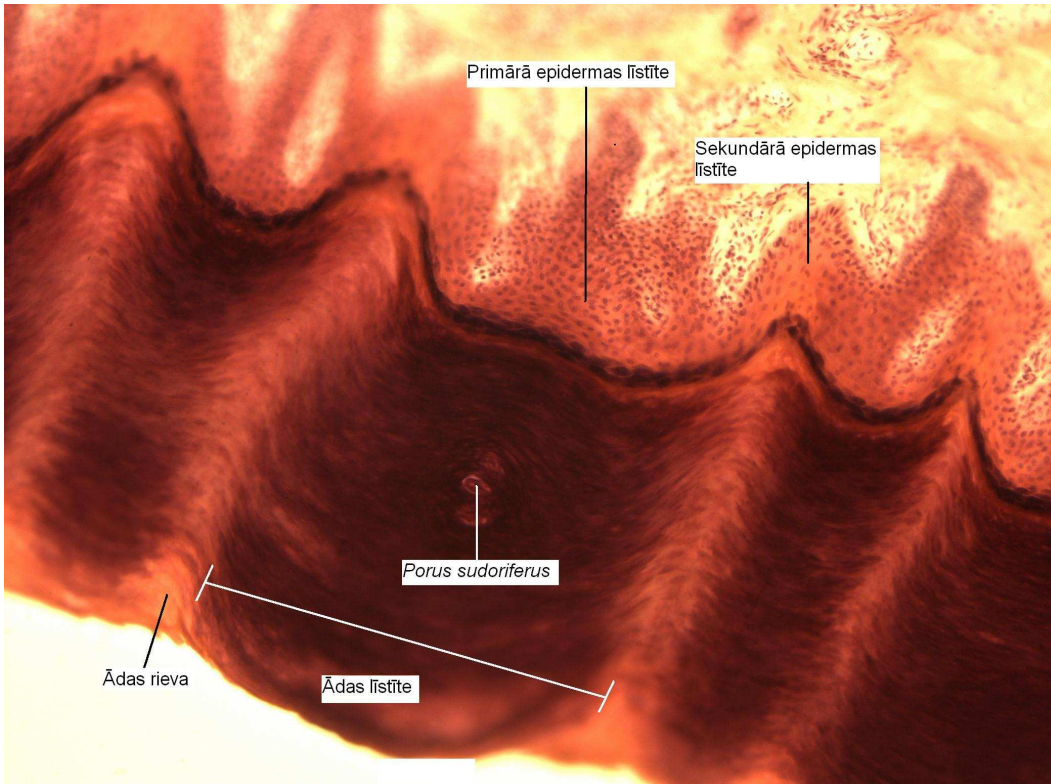
4. – Sviedru dziedzeru uzbūve.

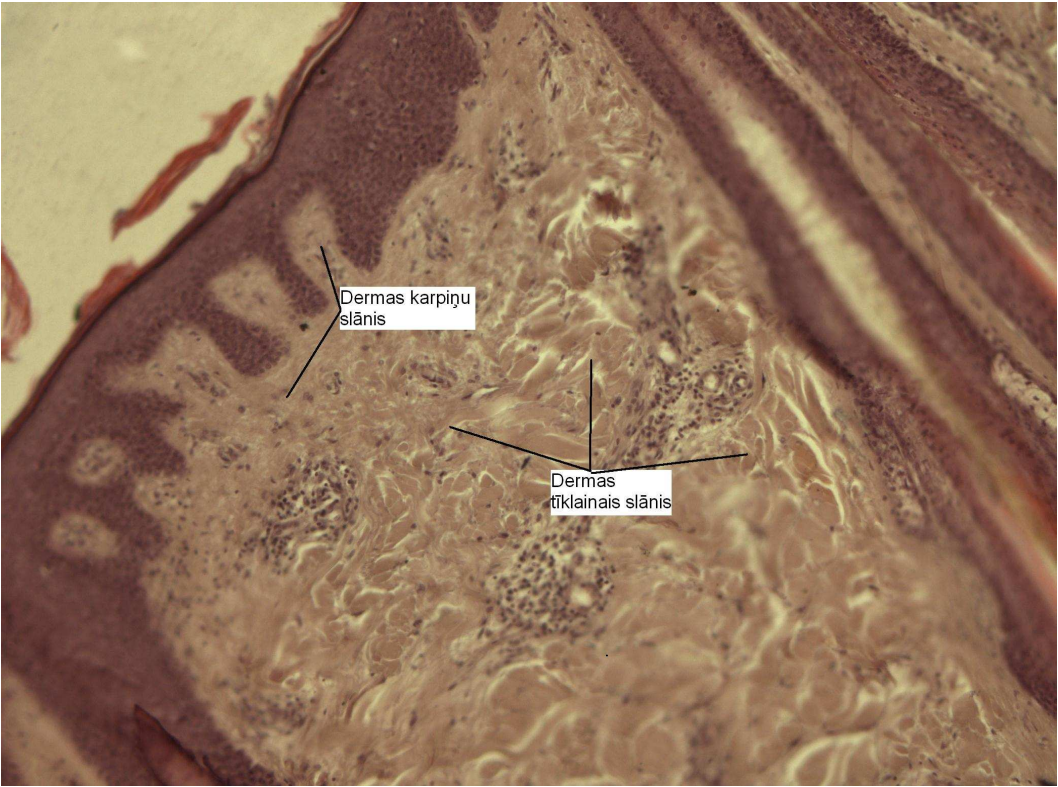


5. Pačini un Meisnera ķermenīšu novietojums.

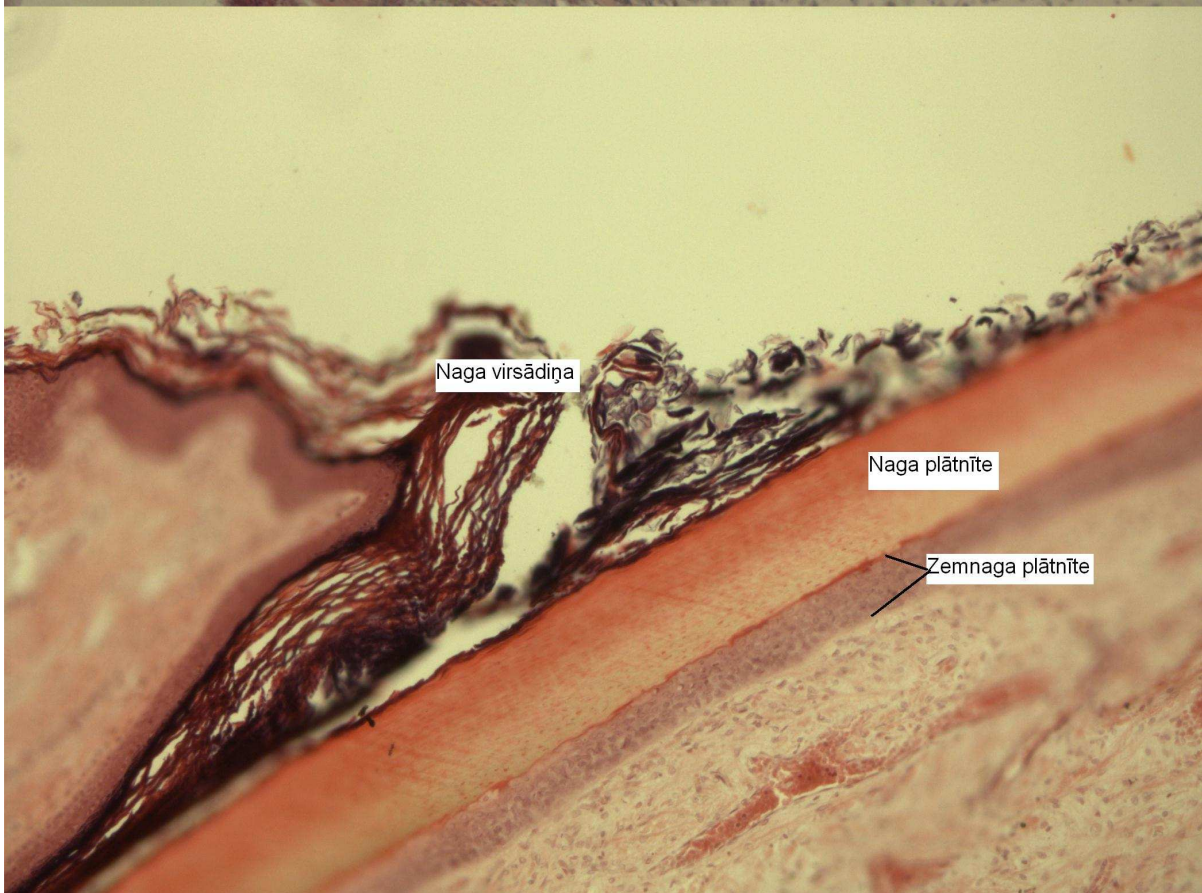
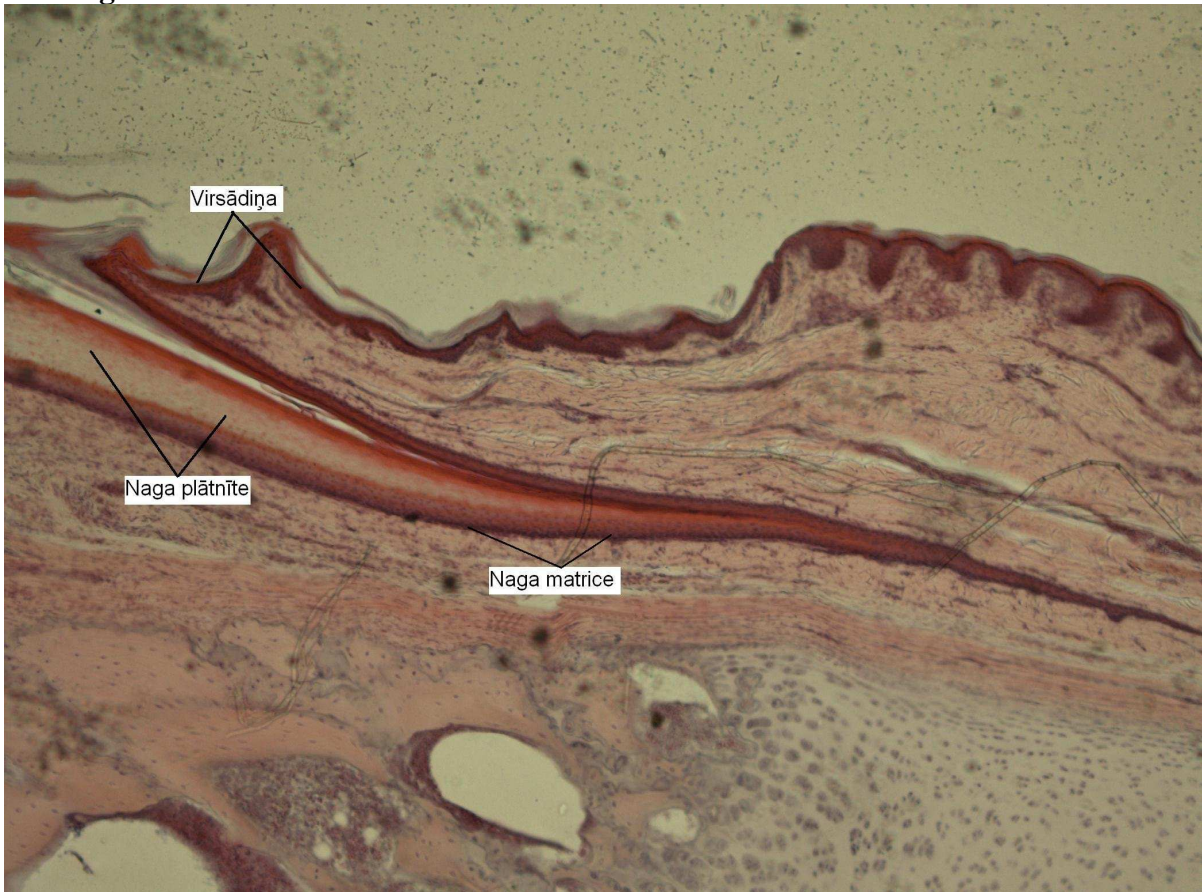


6. – Bieza āda

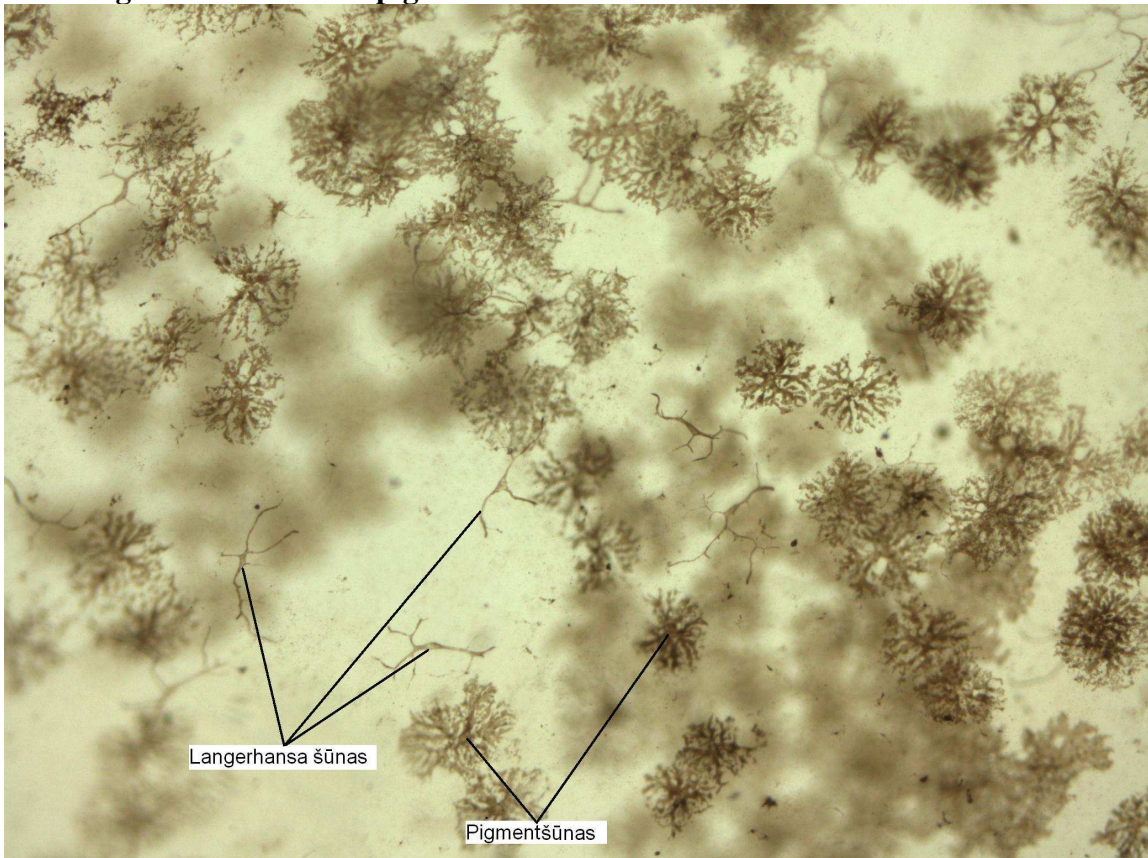




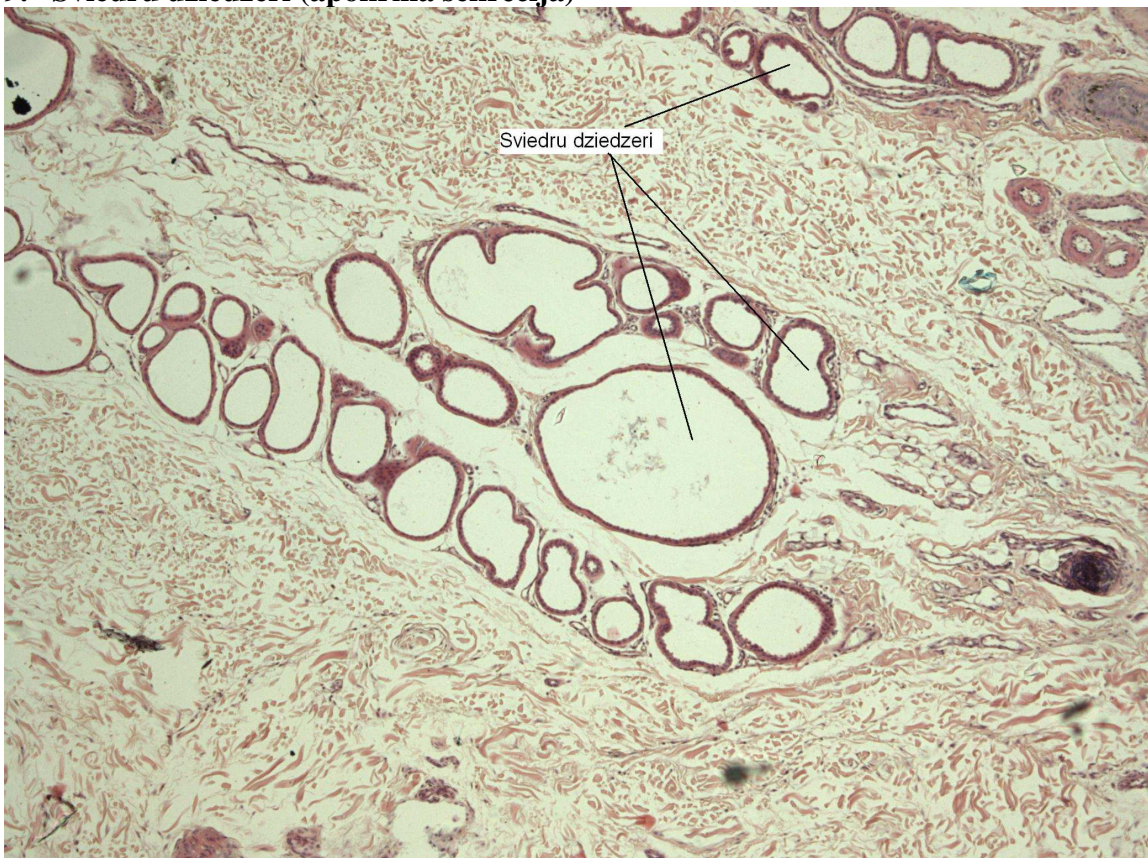
7. – Naga uzbūve.

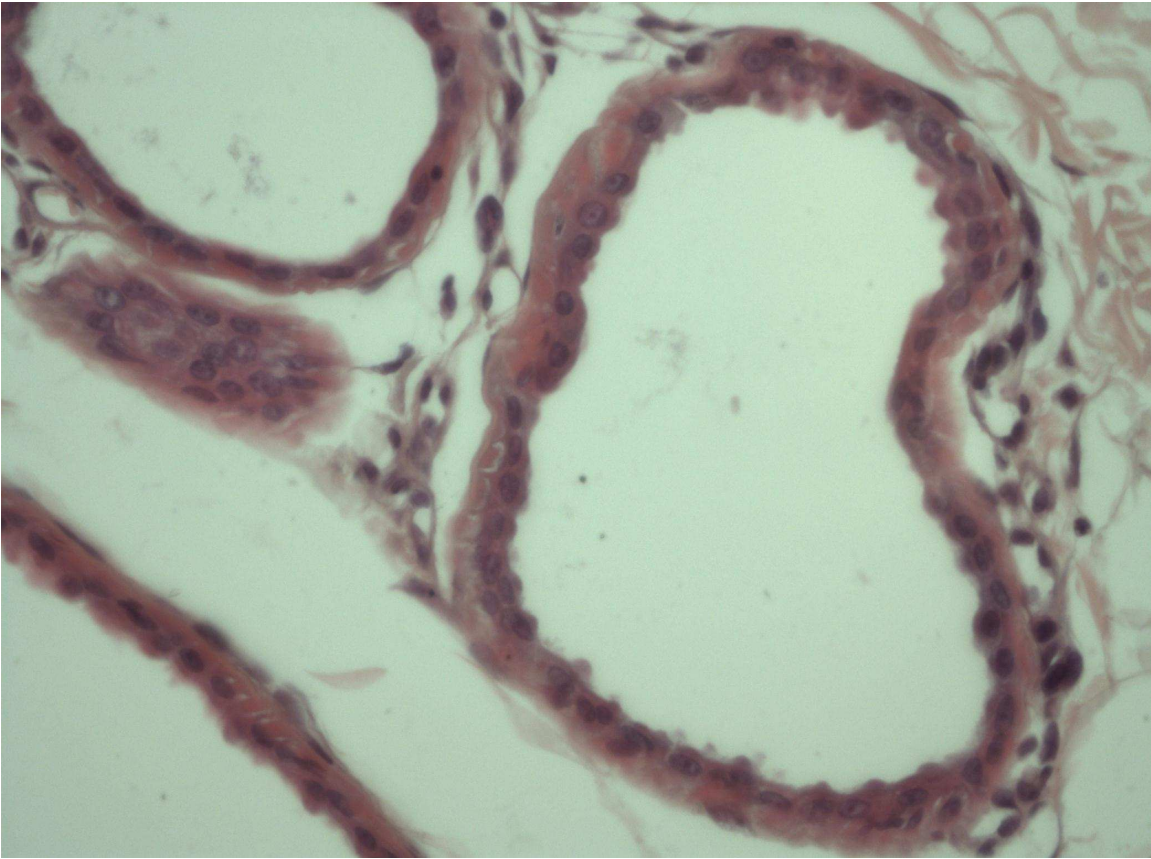


8. – Langerhansa šūnas un pigmentšūnas



9. – Sviedru dziedzeri (apokrīna sekrēcija)





10. – Tauku dziedzeri (holokrīna sekrēcija)

