

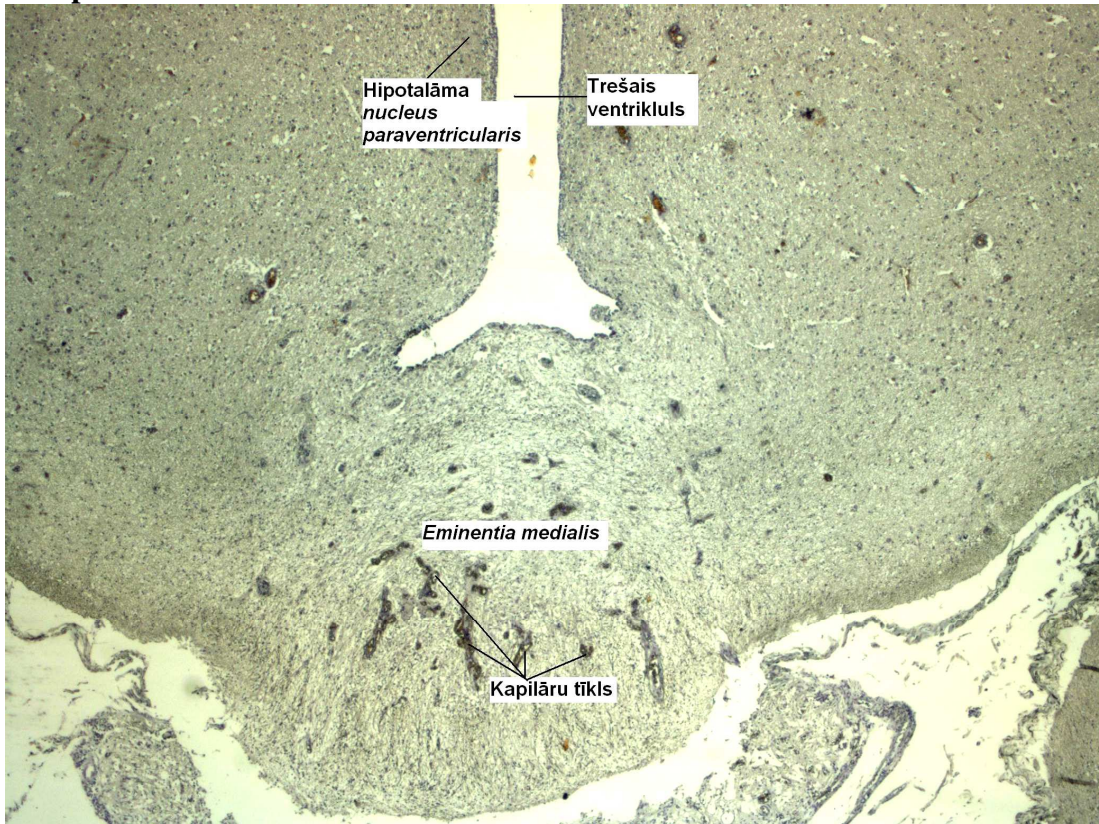
Speciālās histoloģijas kurss

Laboratorijas darbos izmantoto preparātu attēlu atlants

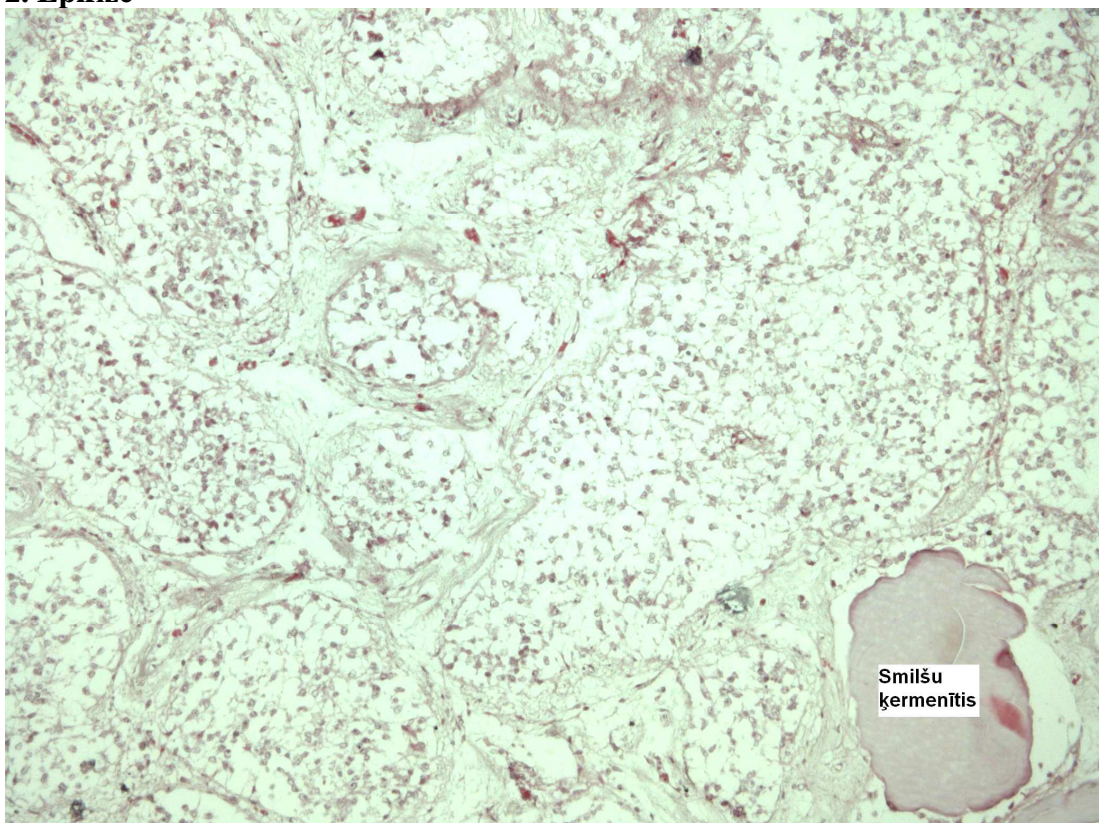
Rīga 2011.

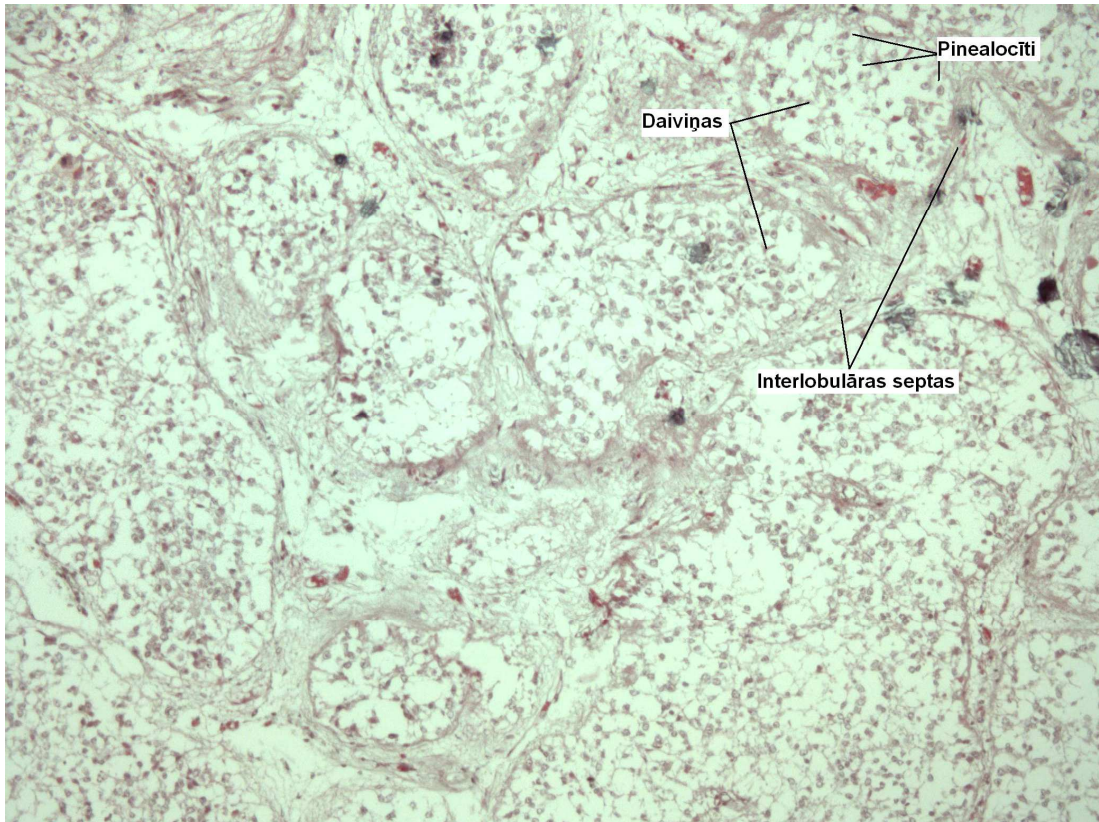
11.nodarbība Endokrīnā sistēma

1. Hipotalāms

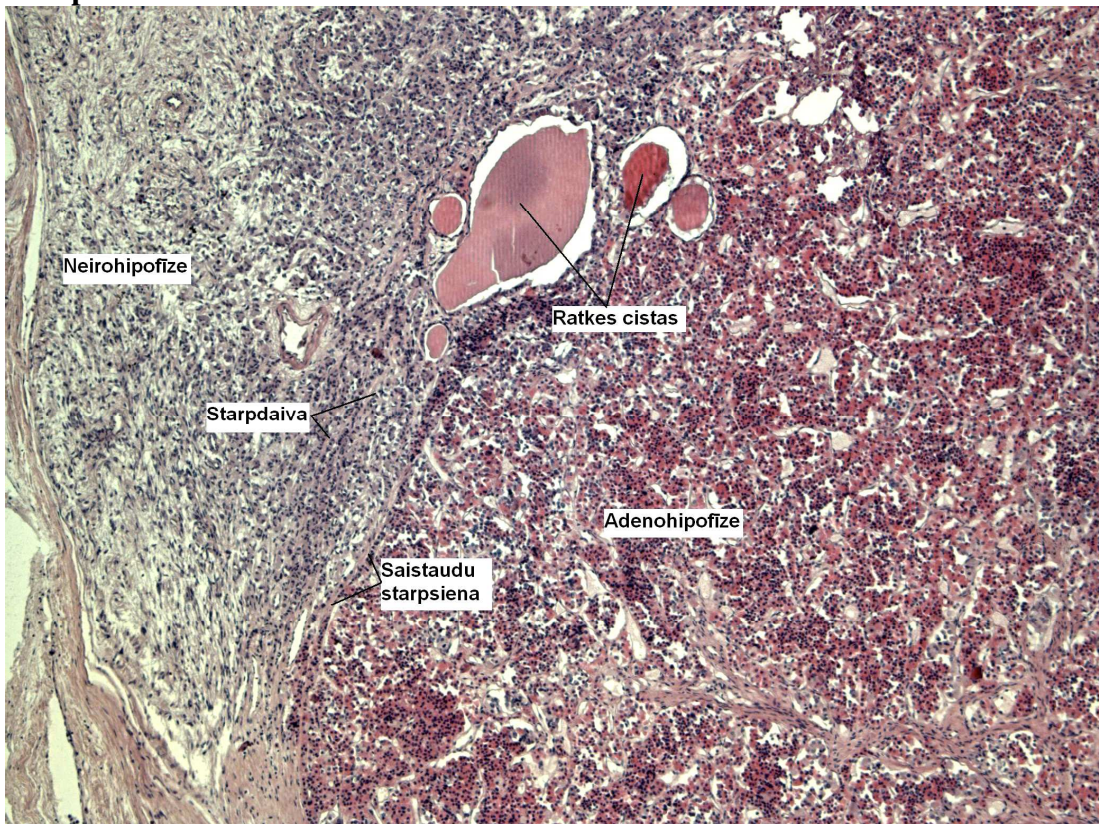


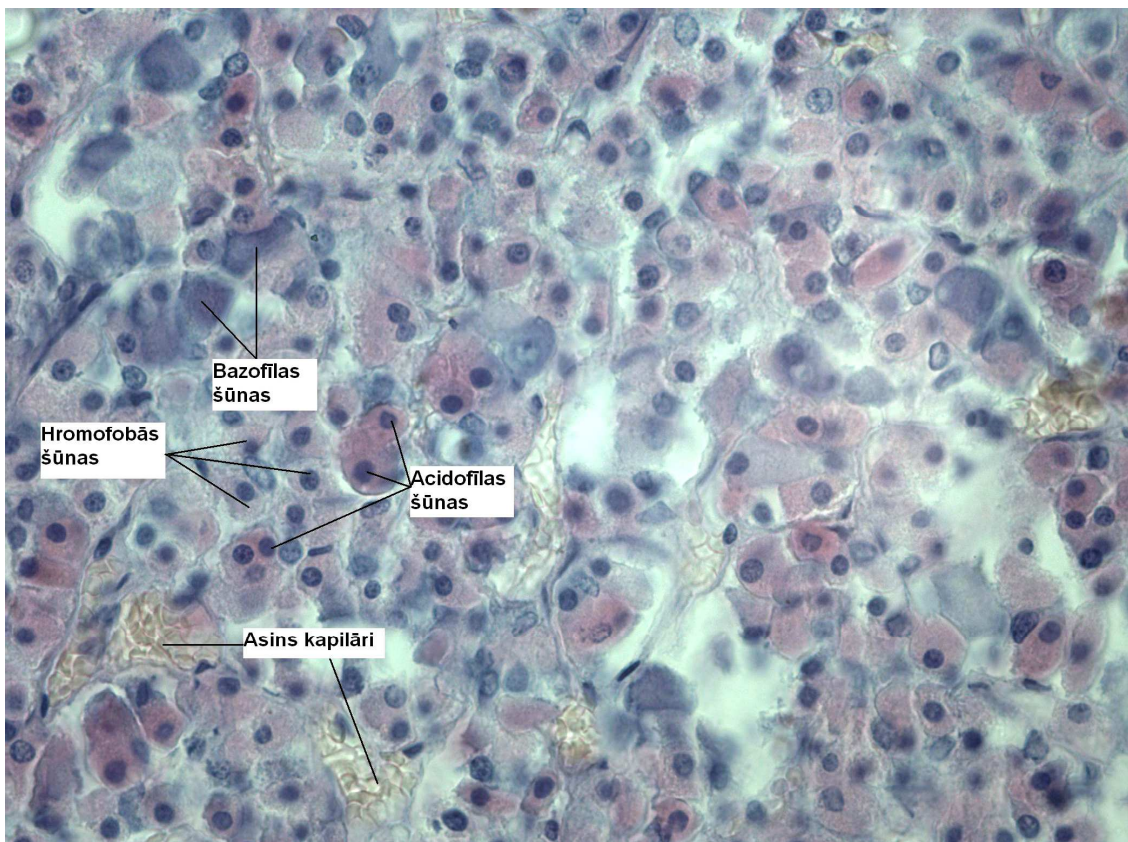
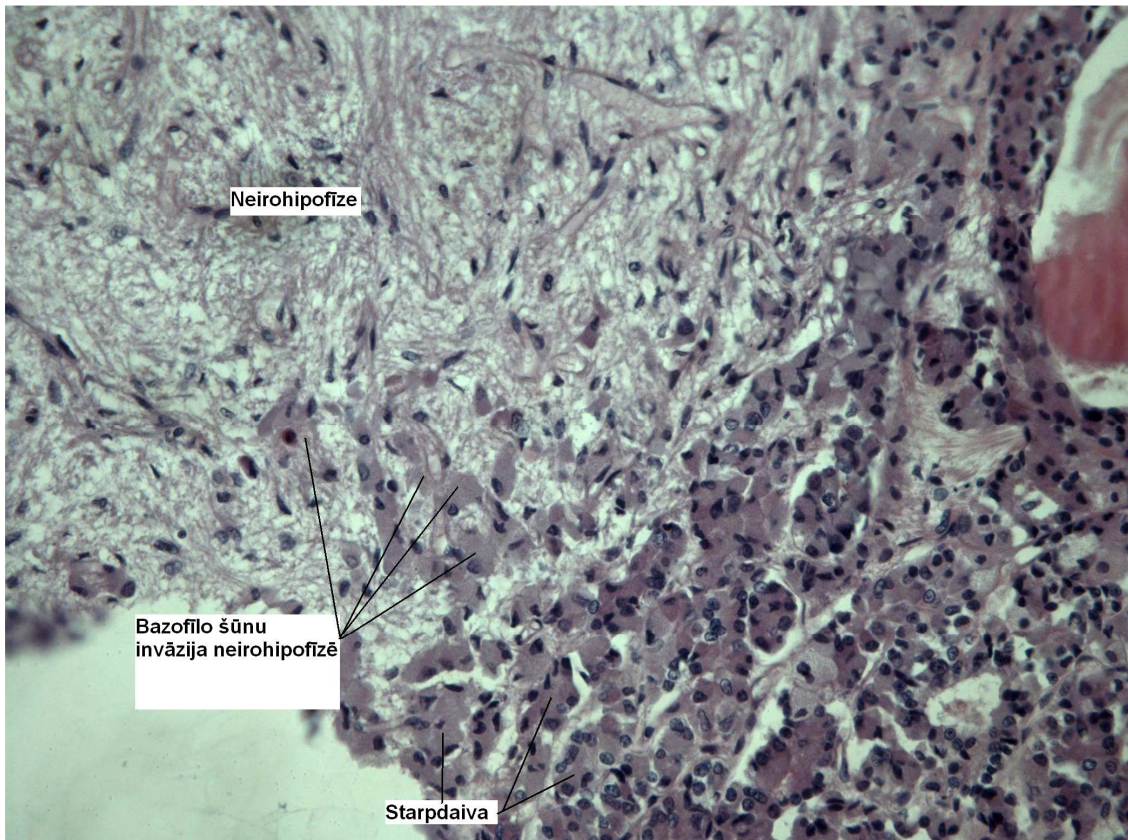
2. Epifīze

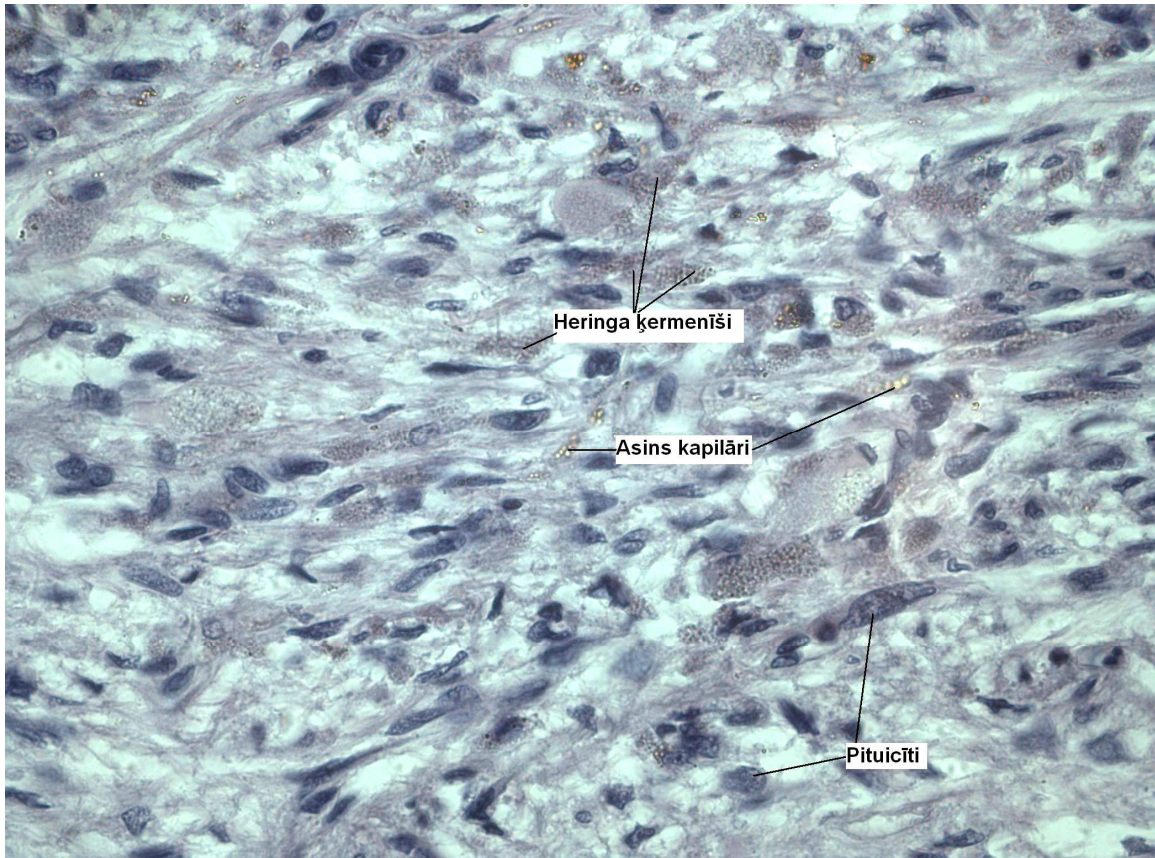




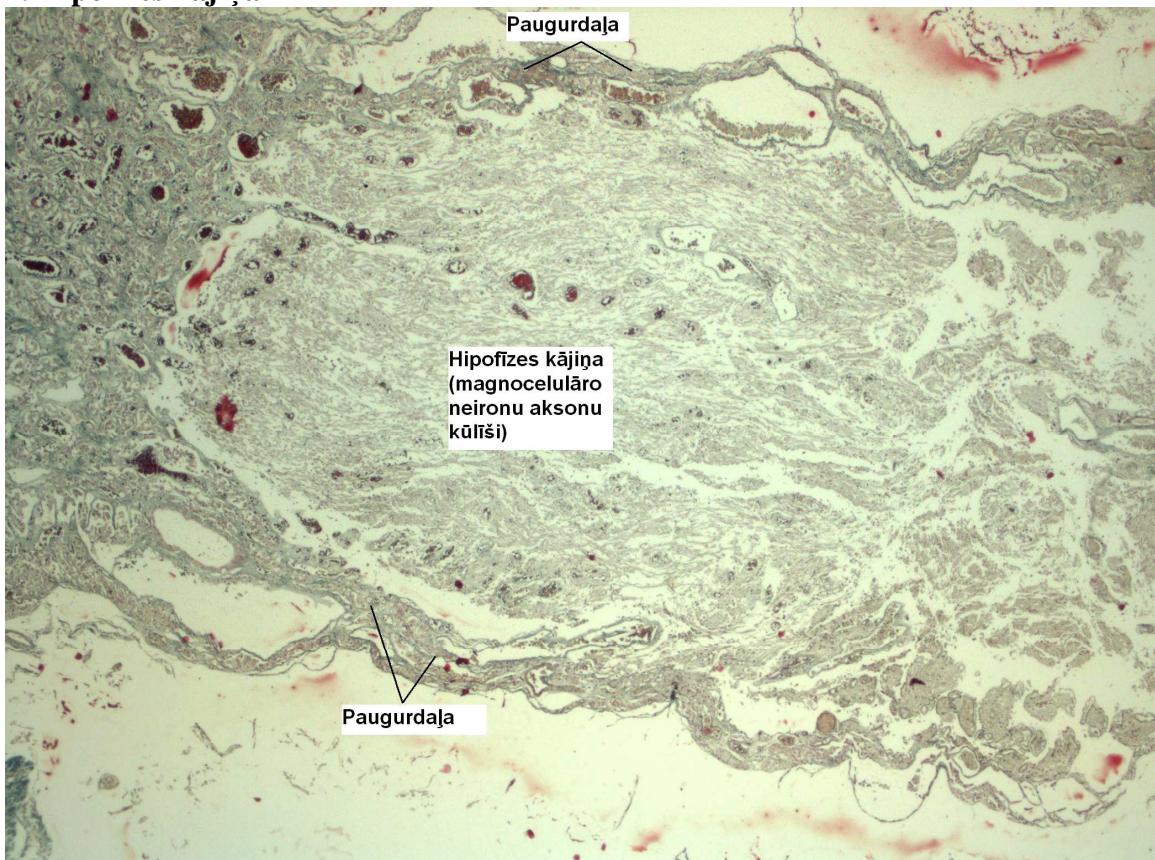
3. Hipofīze

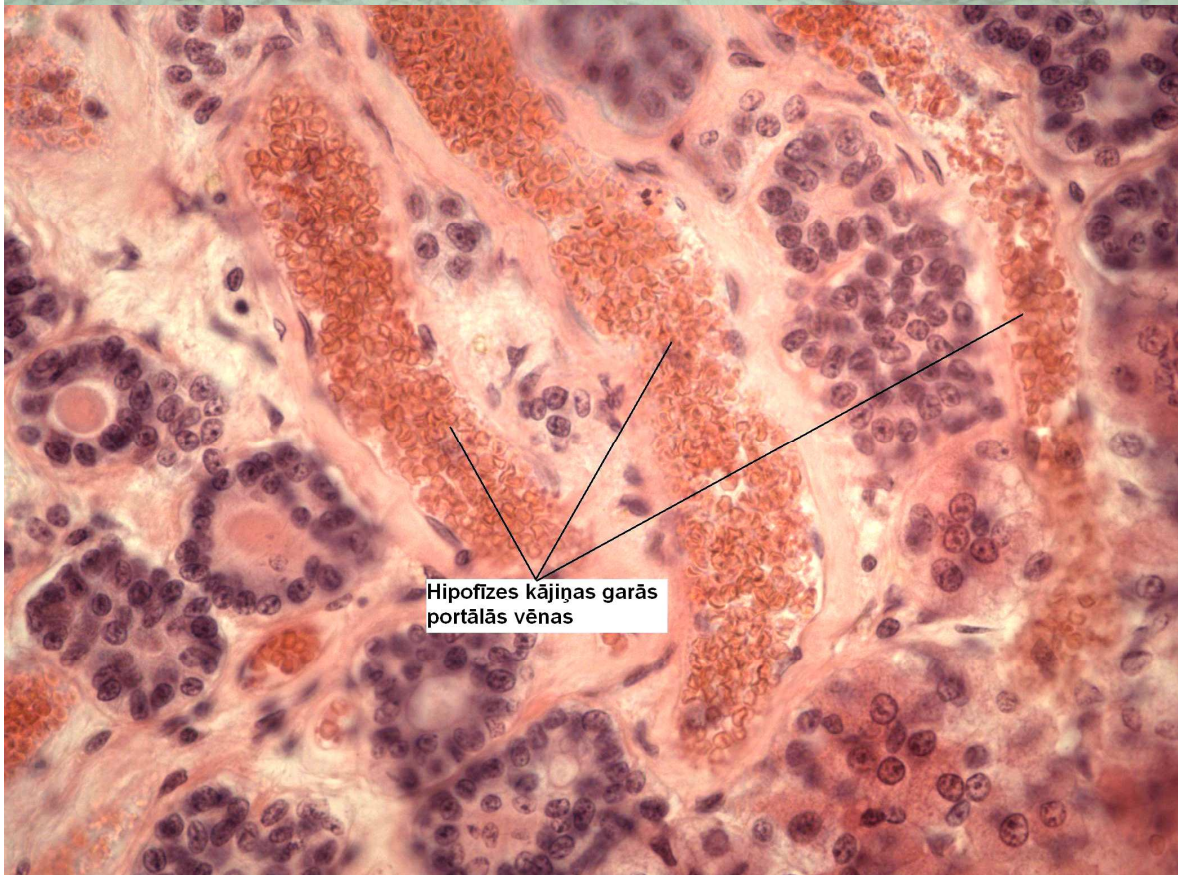
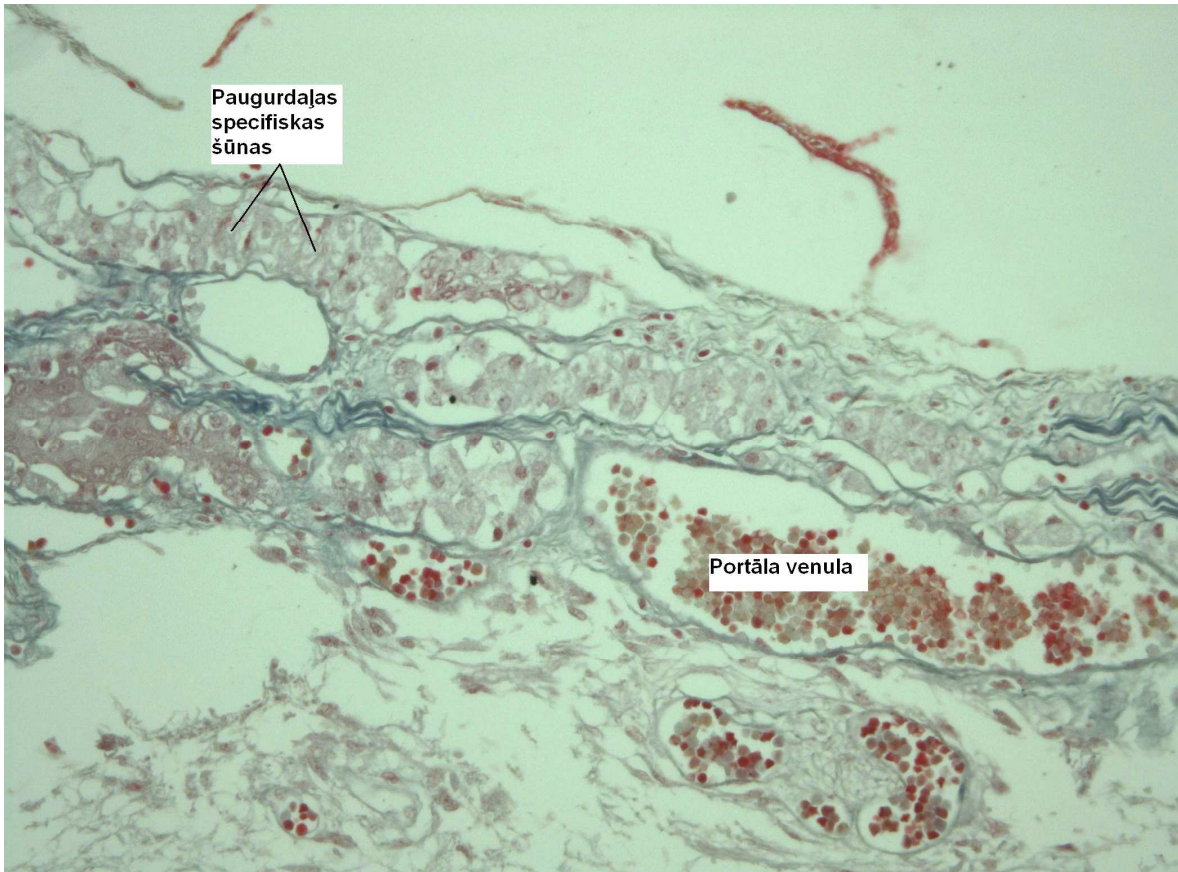




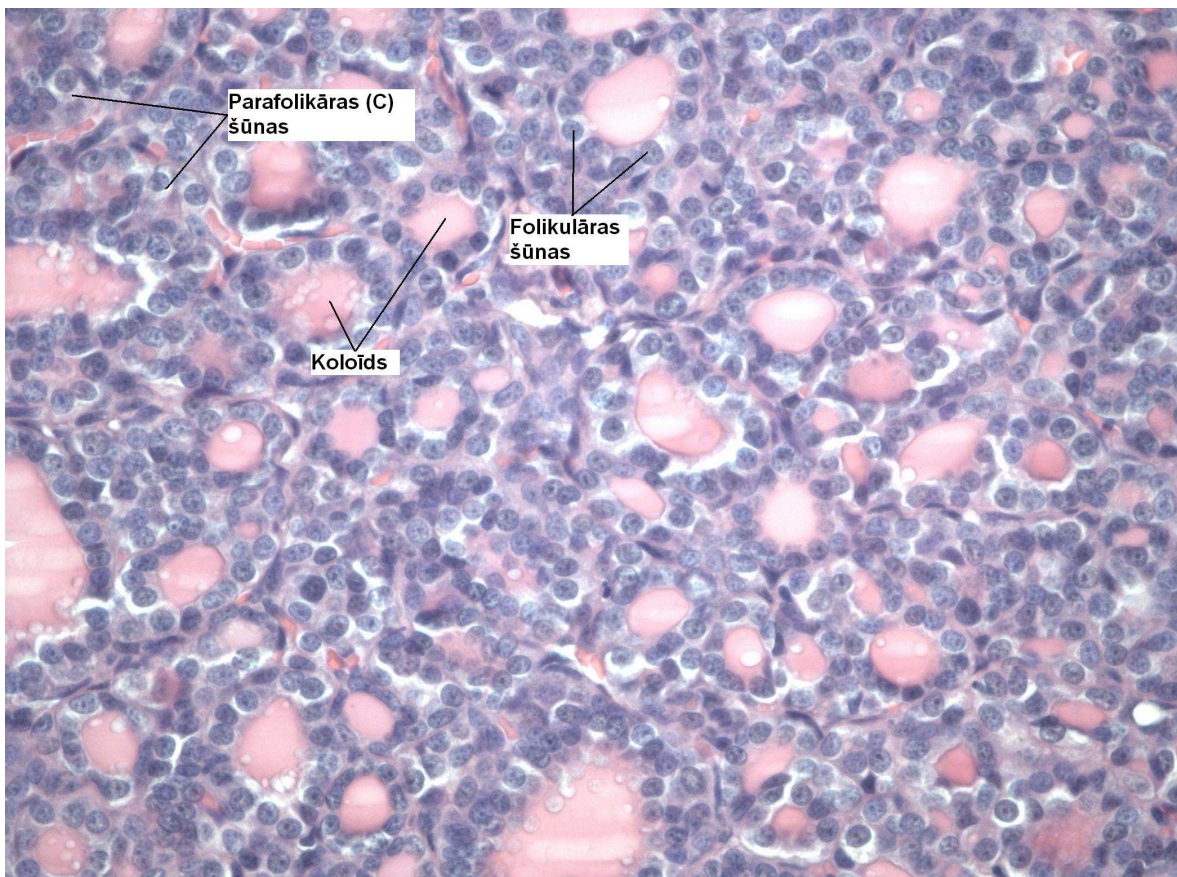
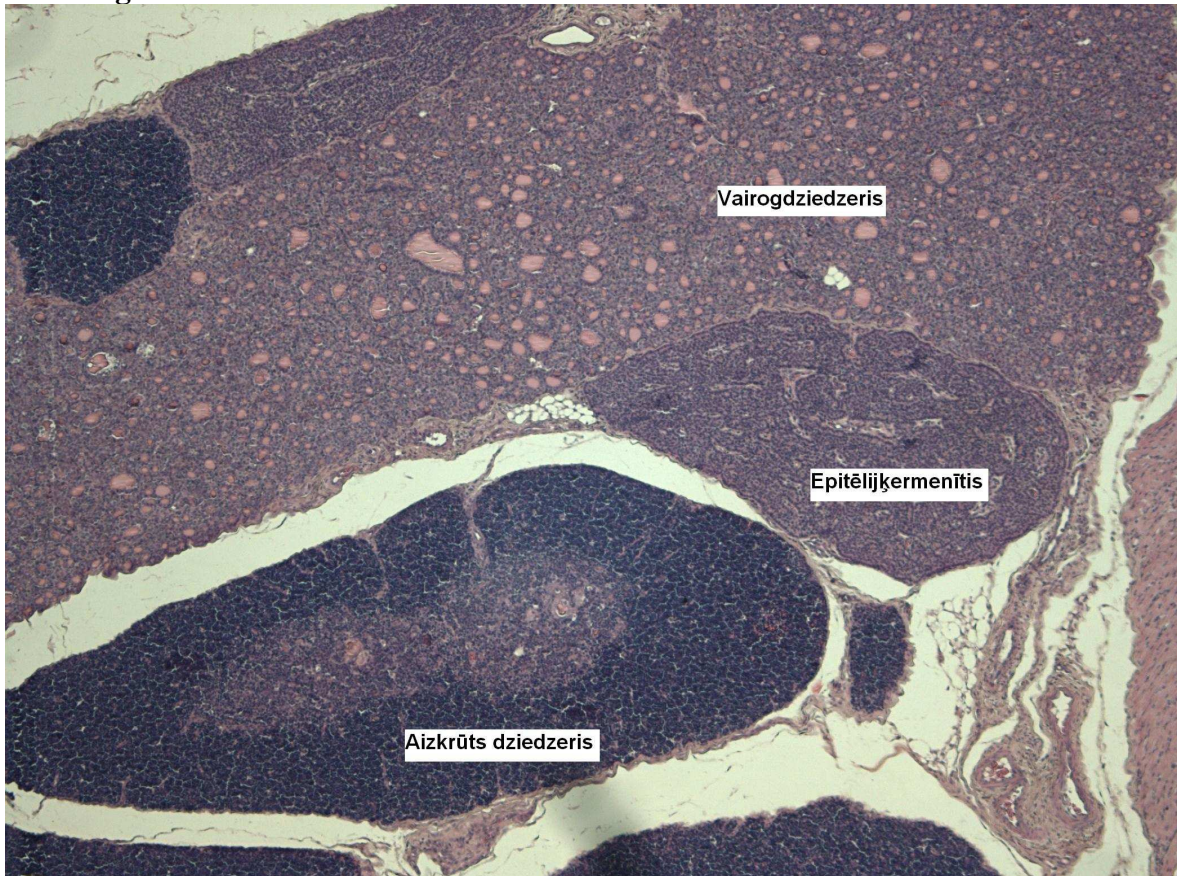


4. Hipofizes kājiņa





5. Vairogdziedzeris



6. Virsniere

