

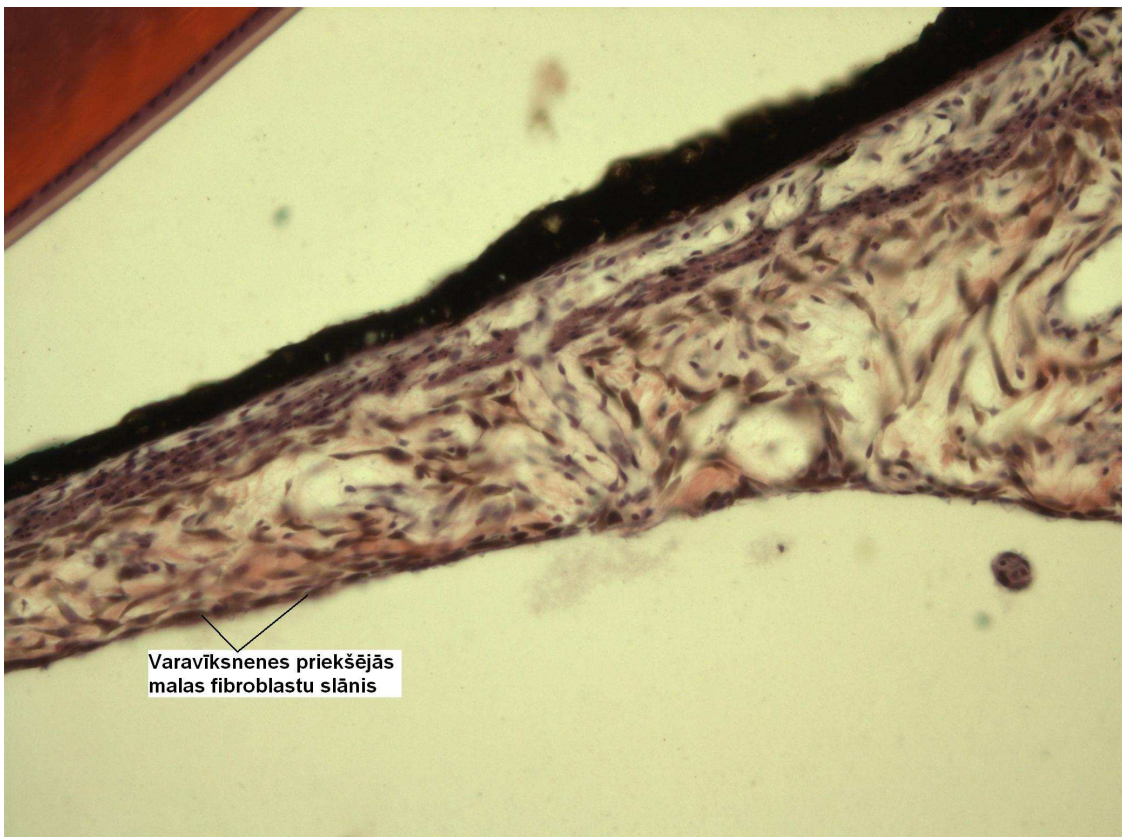
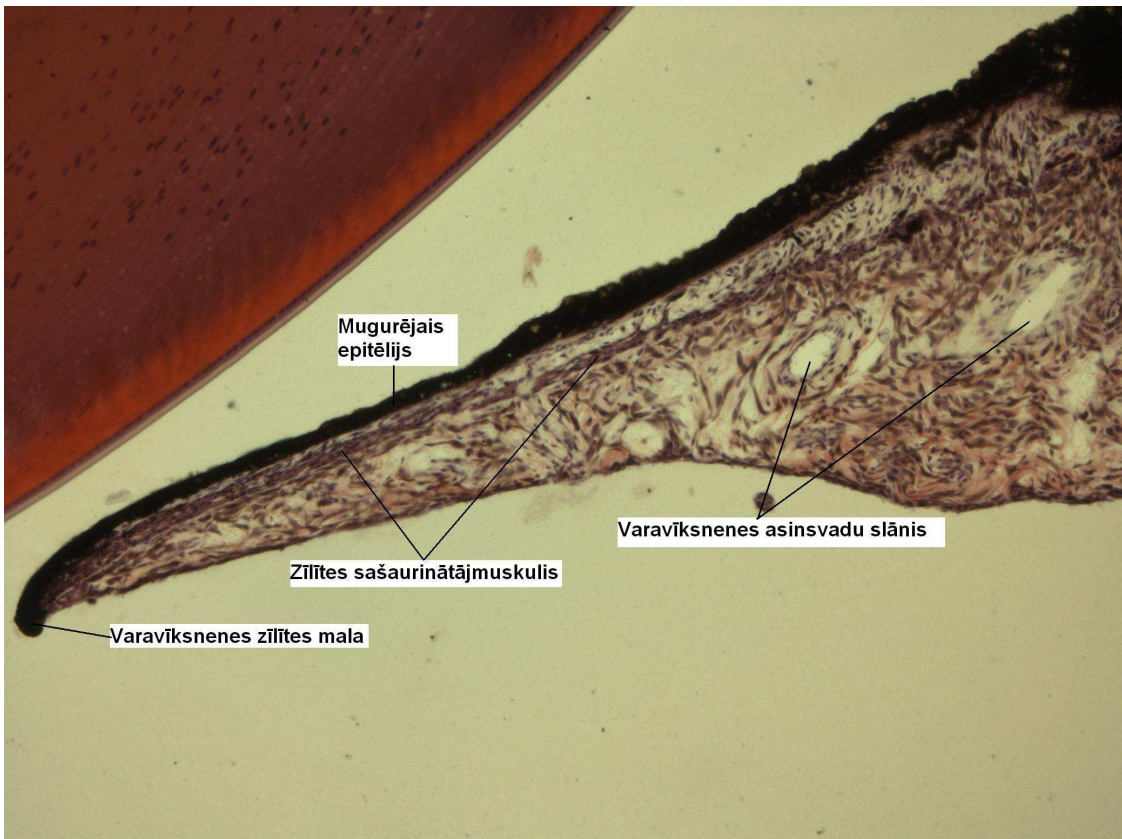
Speciālās histoloģijas kurss

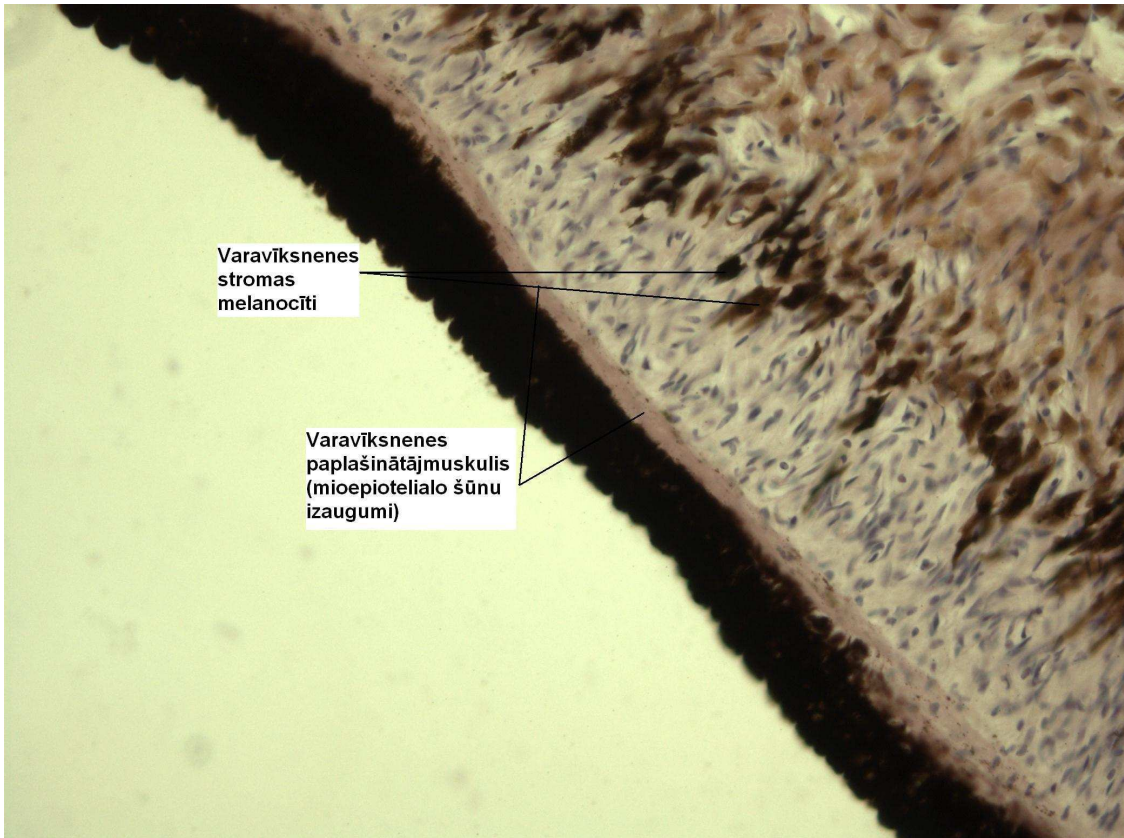
Laboratorijas darbos izmantoto preparātu attēlu atlants

Rīga 2011.

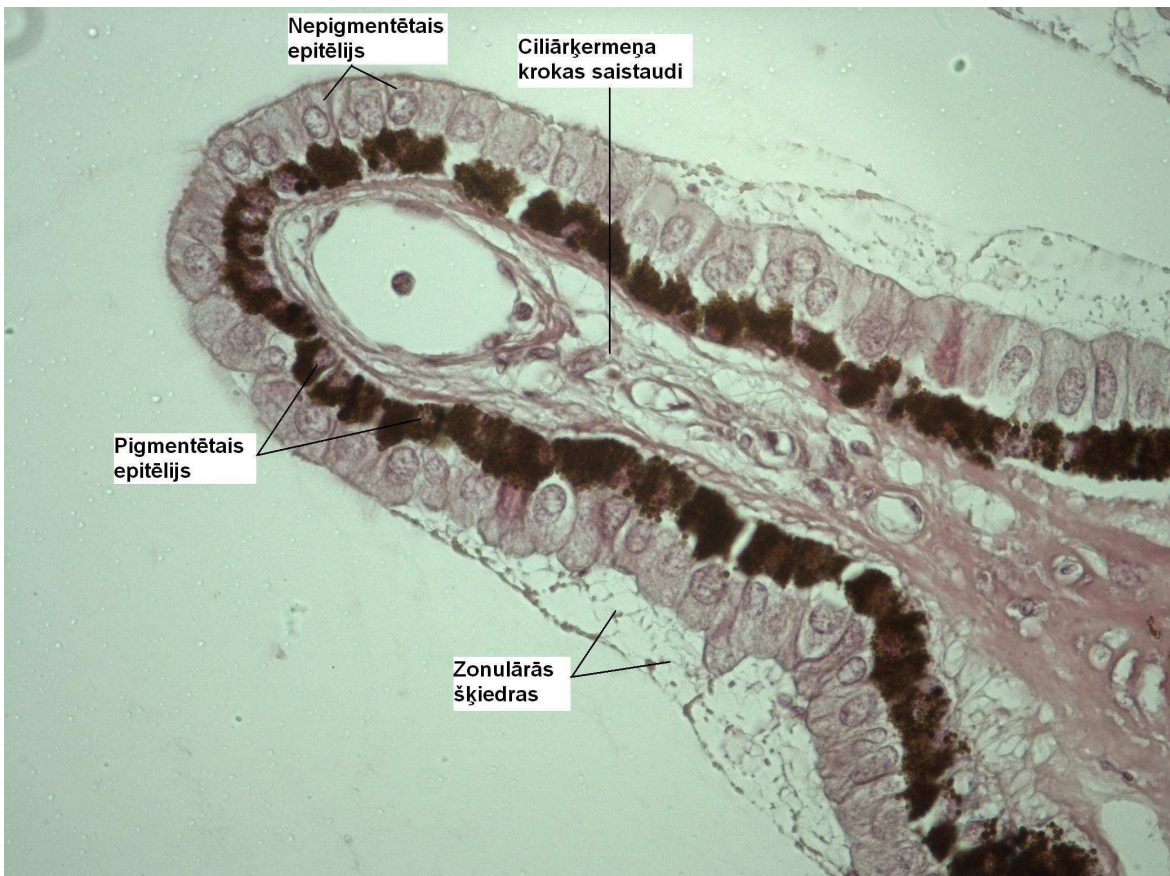
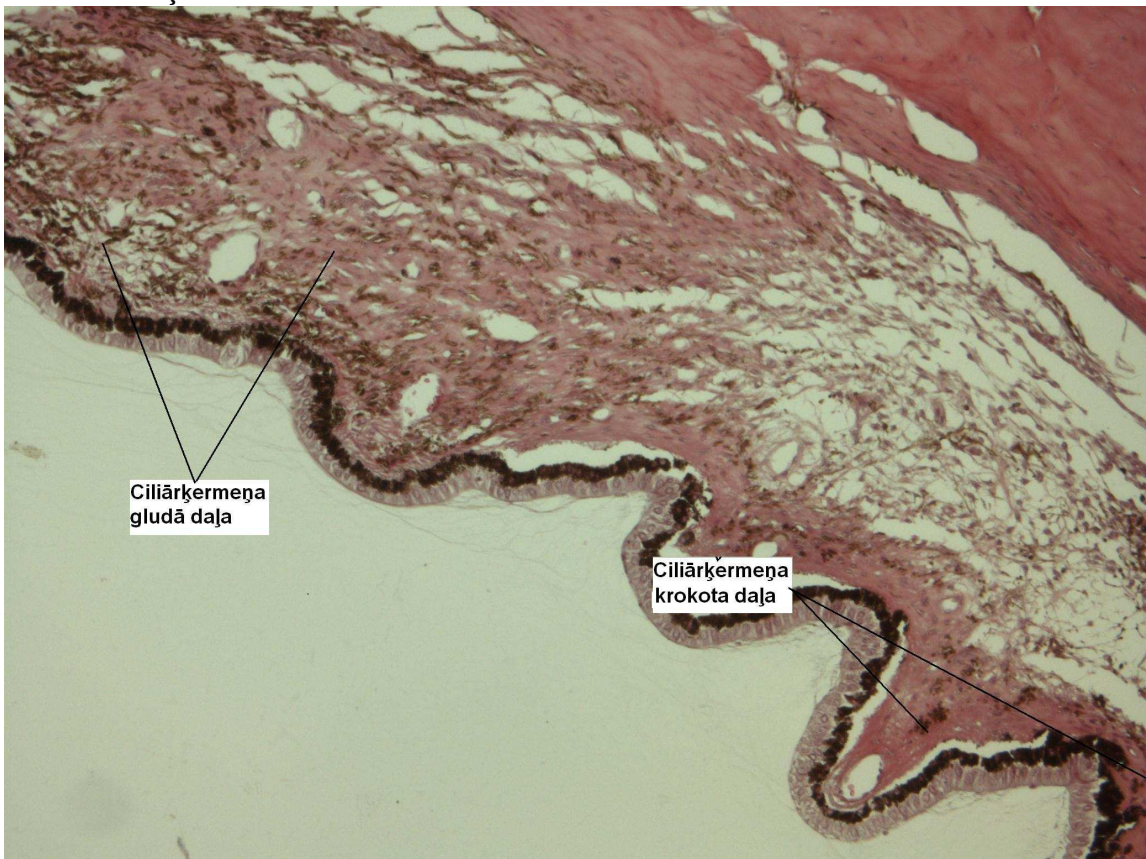
10.nodarbība Acs

1. Varavīksnene





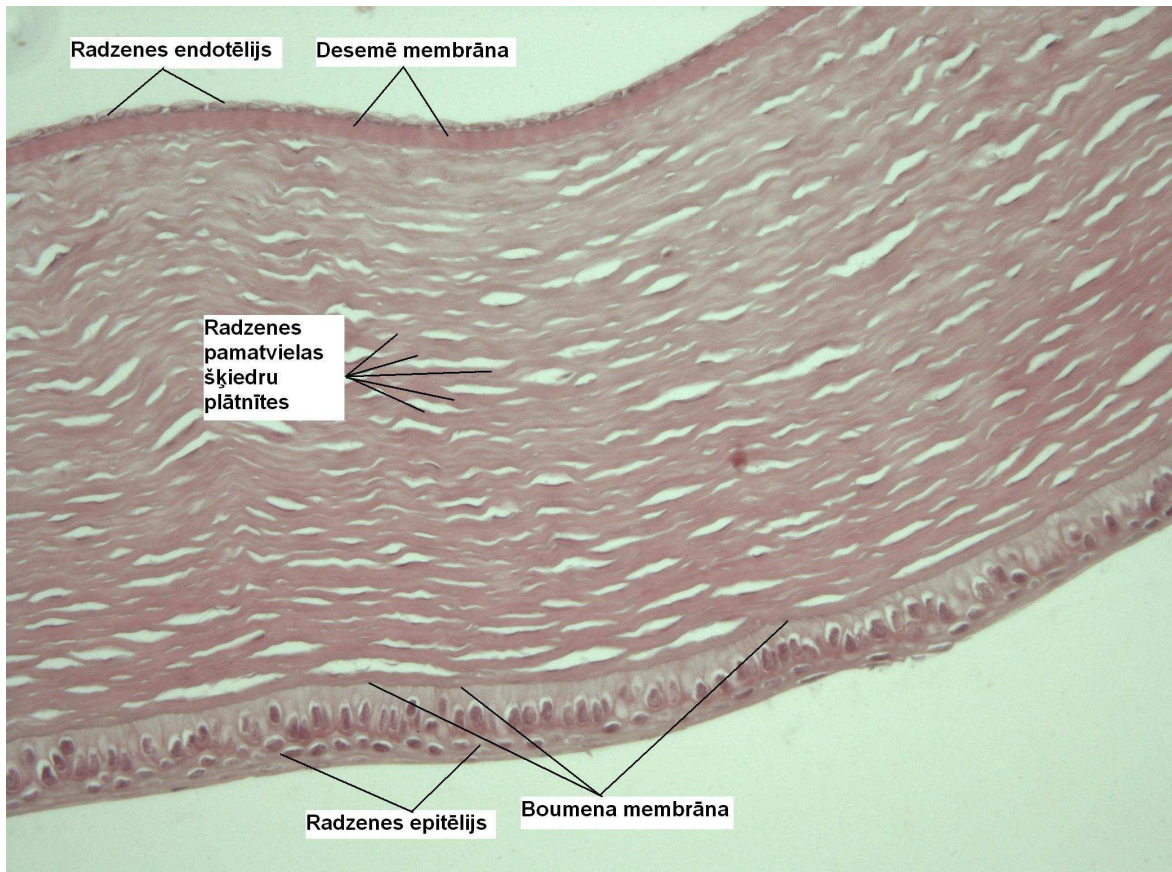
2. Ciliārķermenis



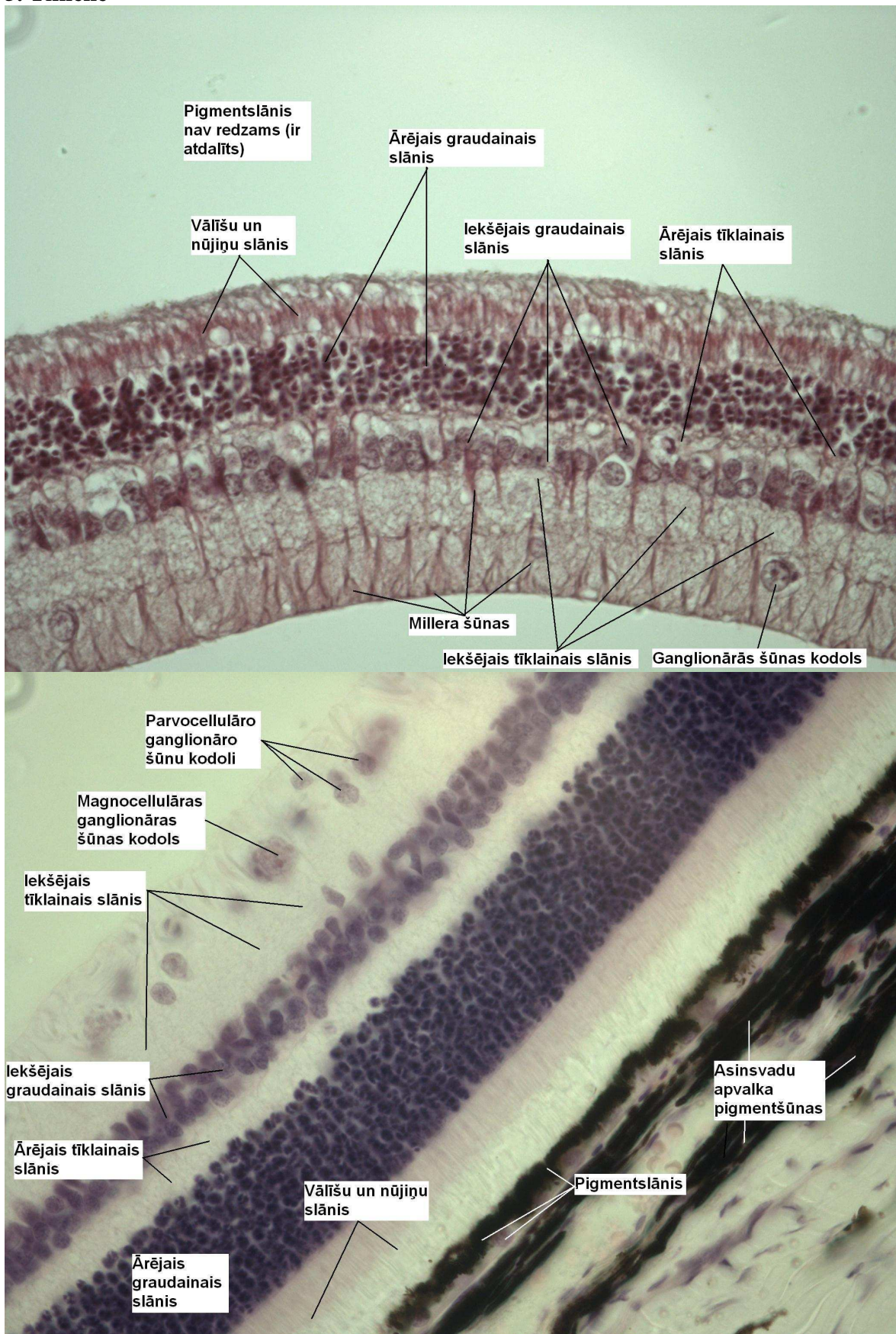
3. Acs lēcas šķiedras



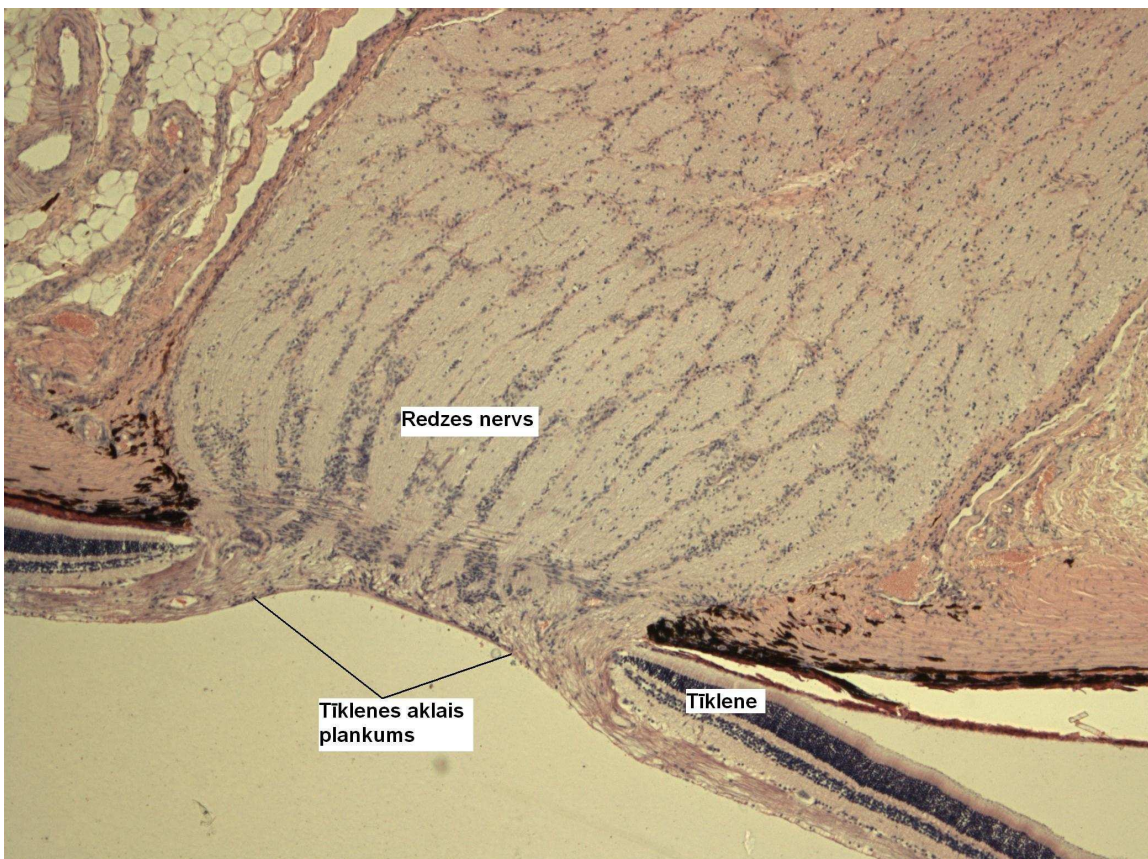
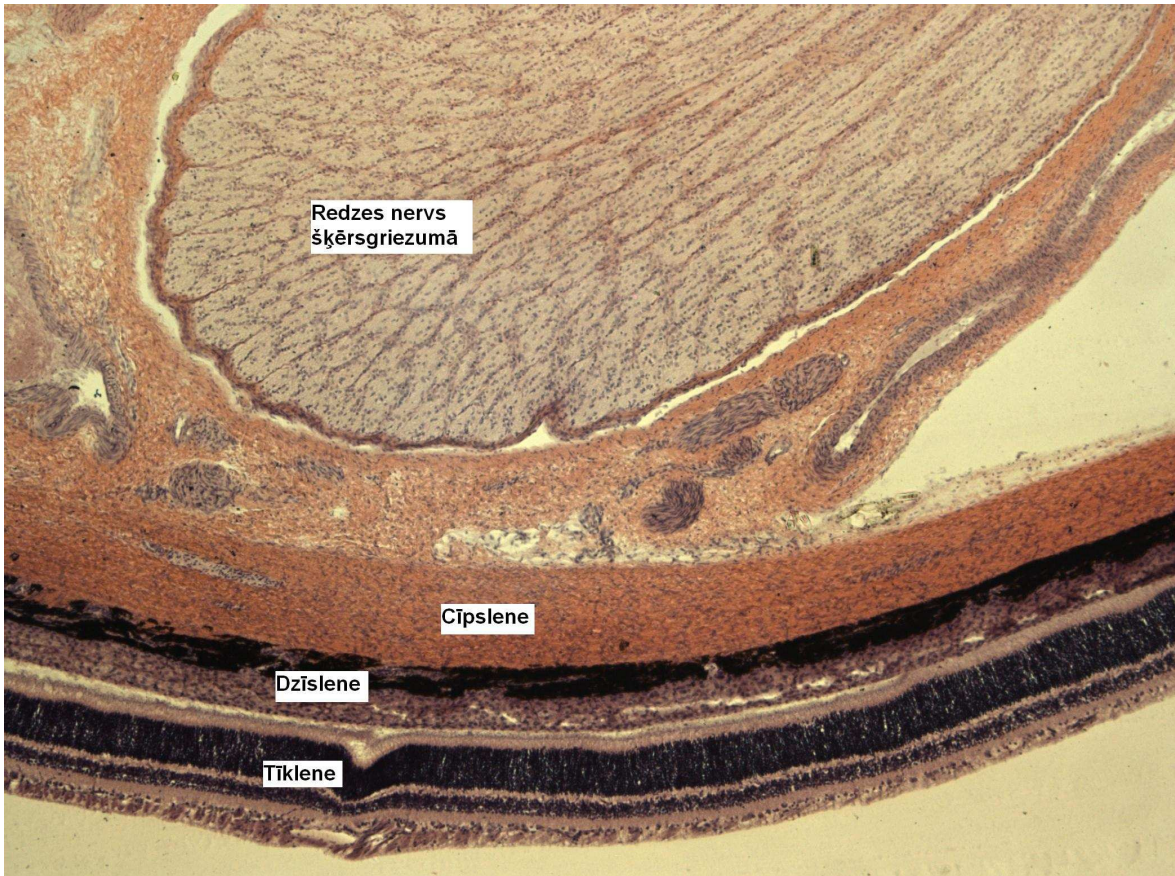
4. Radzene

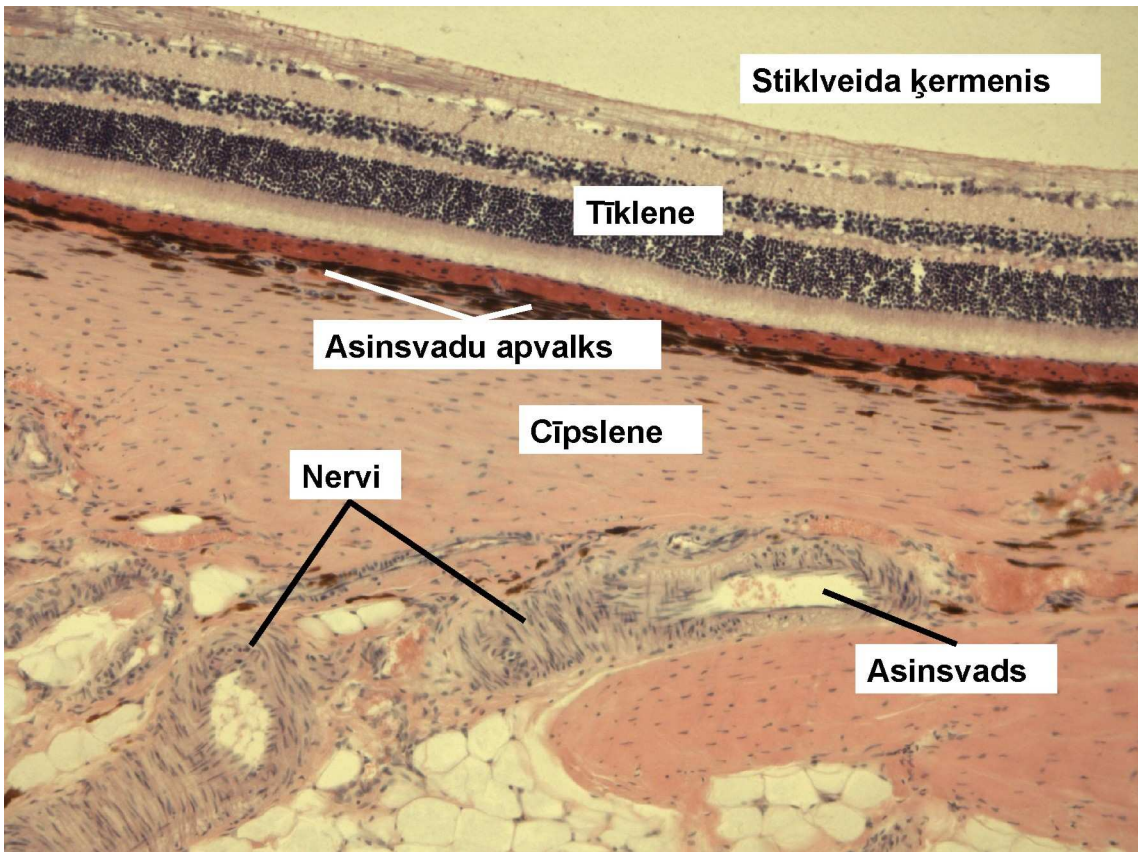


5. Tīklene

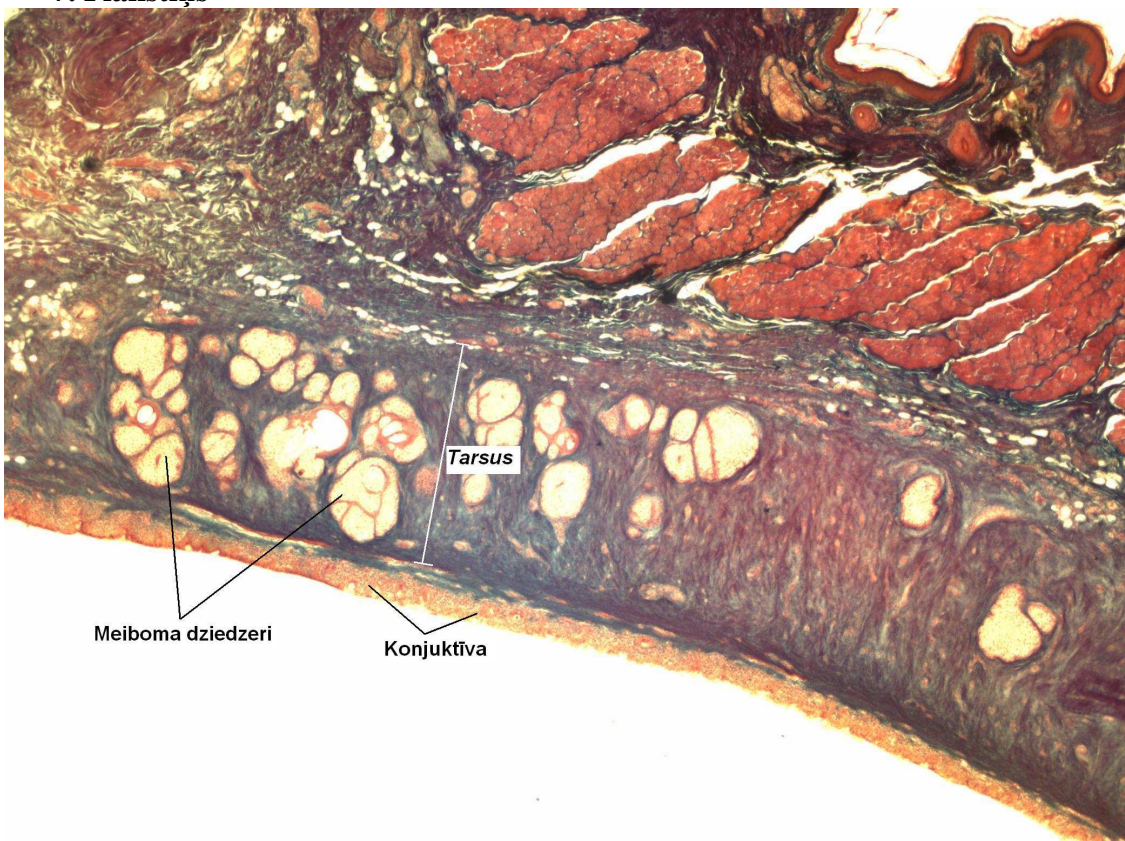


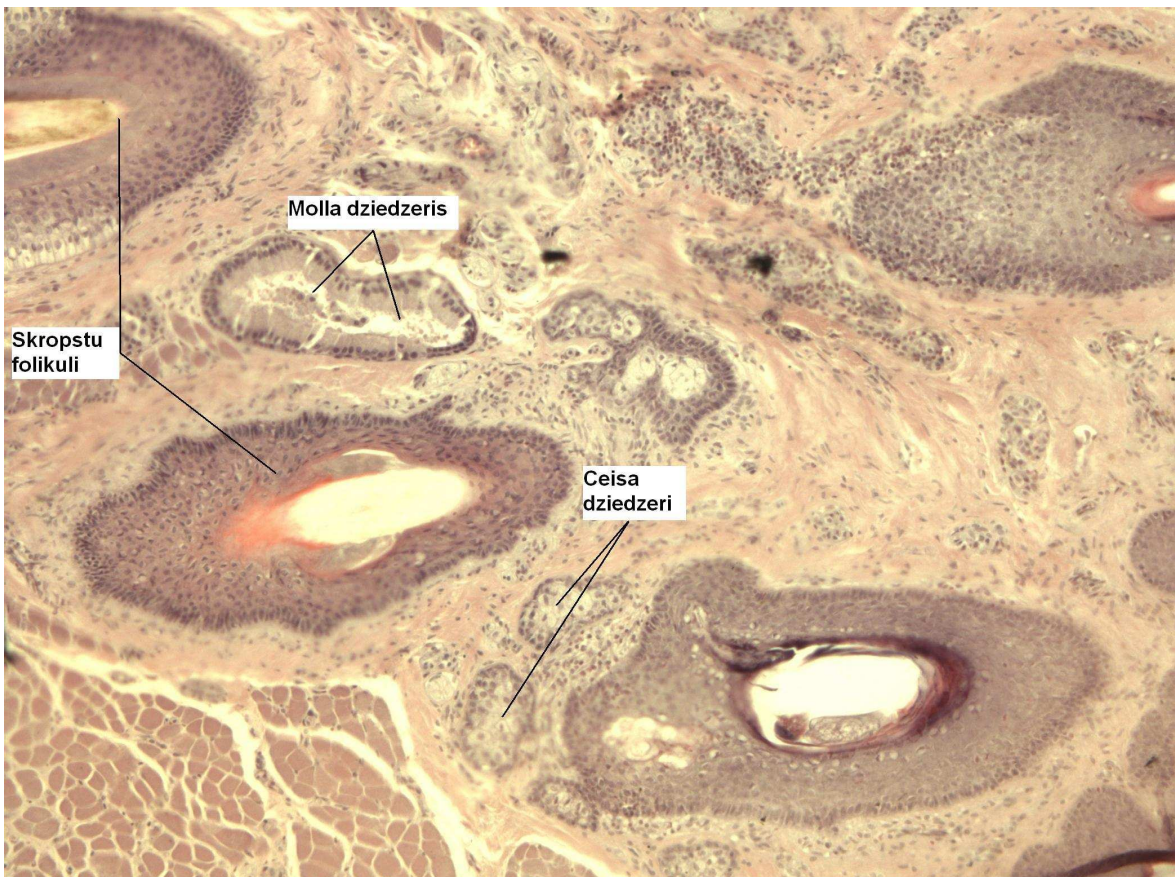
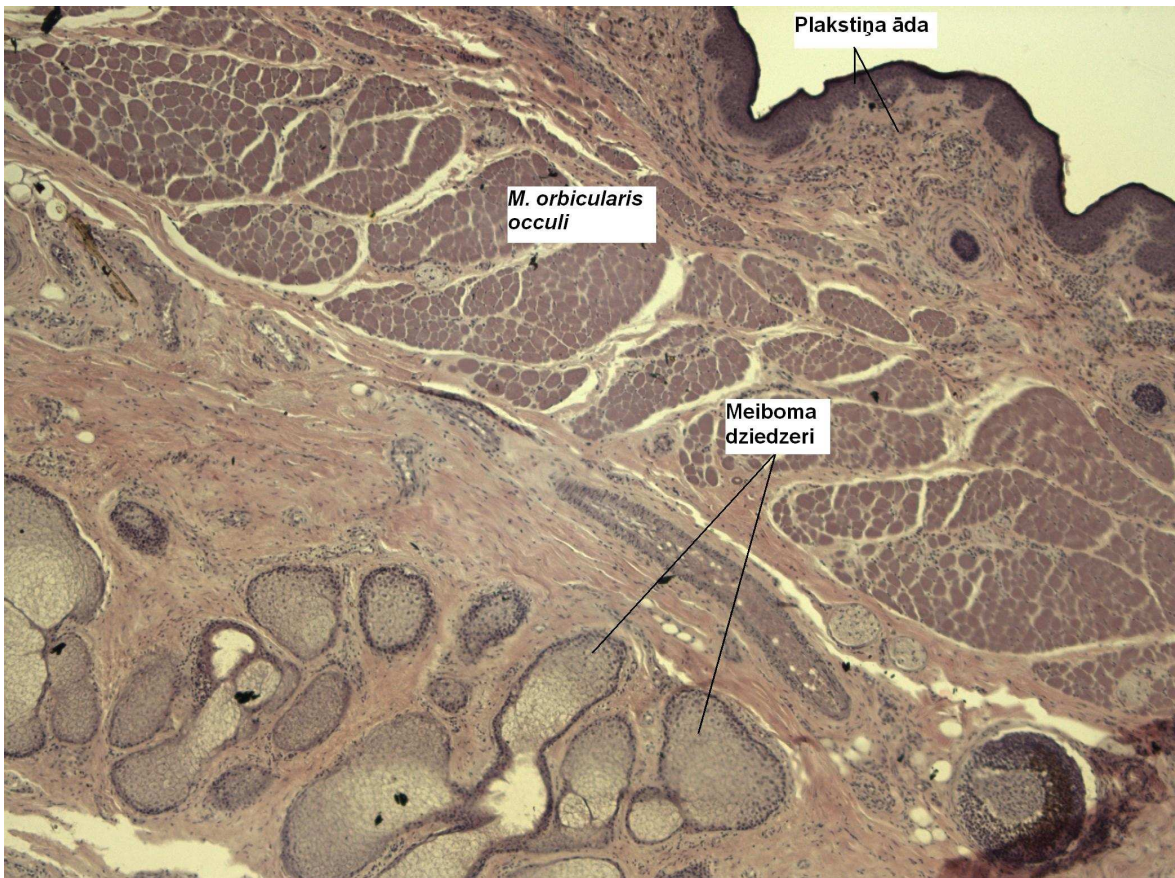
6. Redzes nervs





7. Plakstiņš





8. Acs plakstiņa konjunktīva.

