

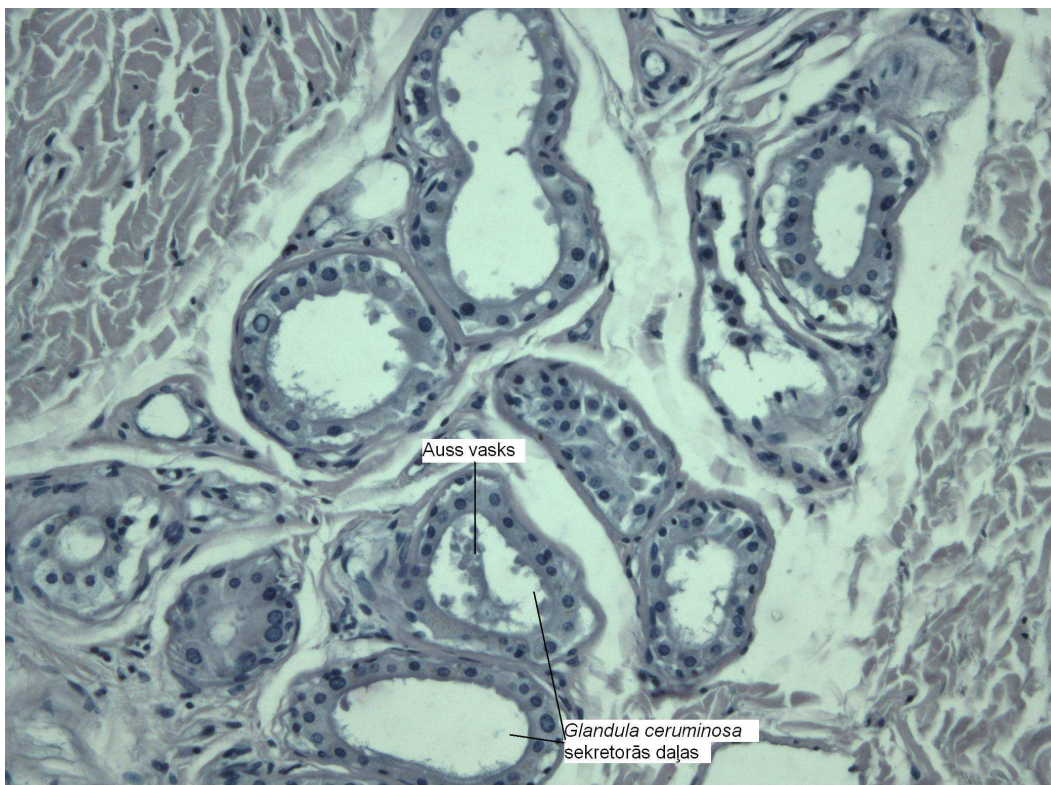
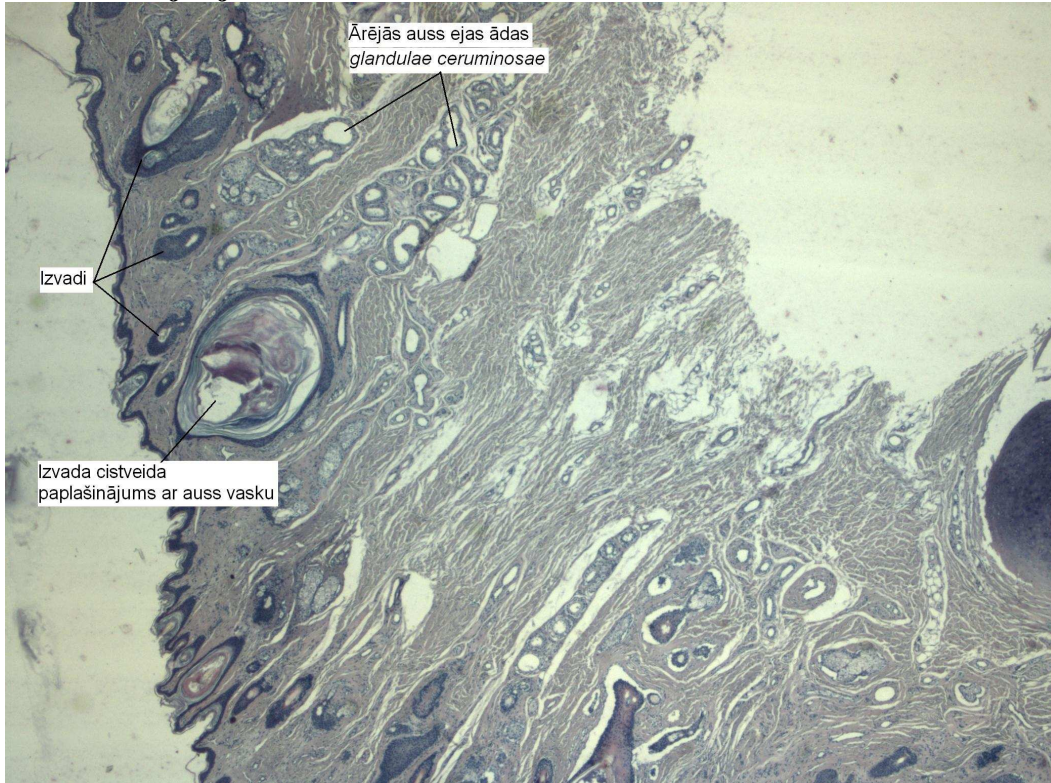
# **Speciālās histoloģijas kurss**

## **Laboratorijas darbos izmantoto preparātu attēlu atlants**

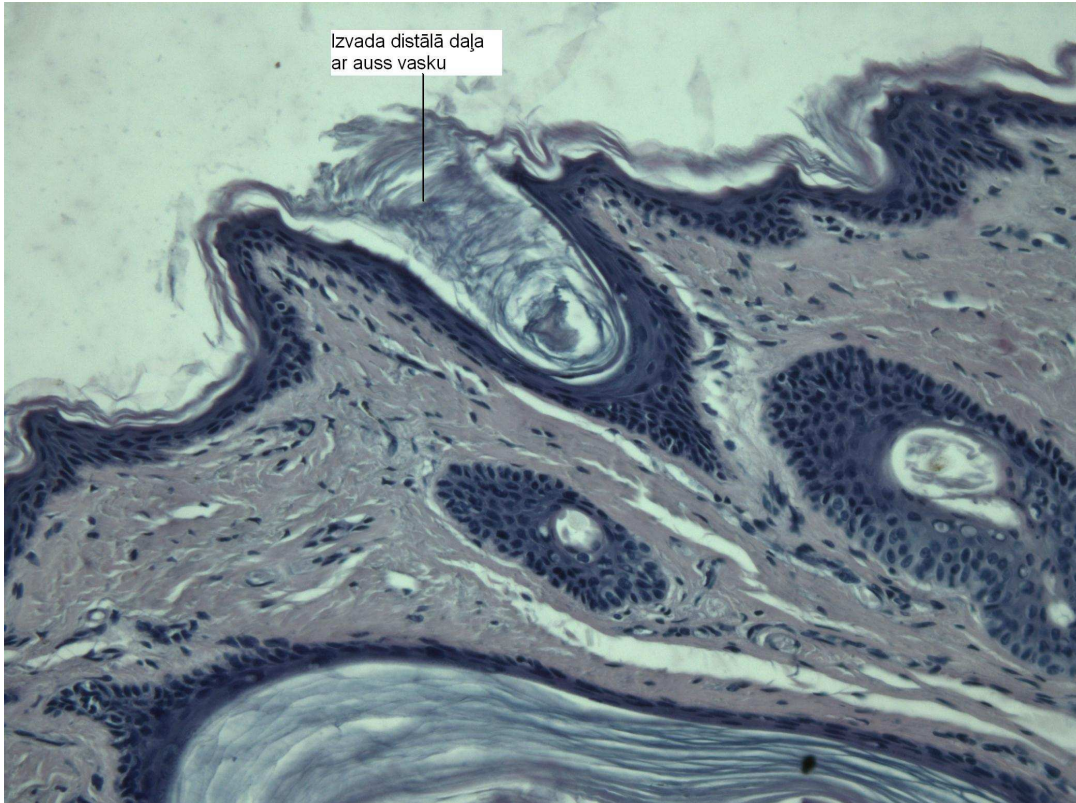
Rīga 2011.

## 9. nodarbība Vestibulokohleārais aparāts

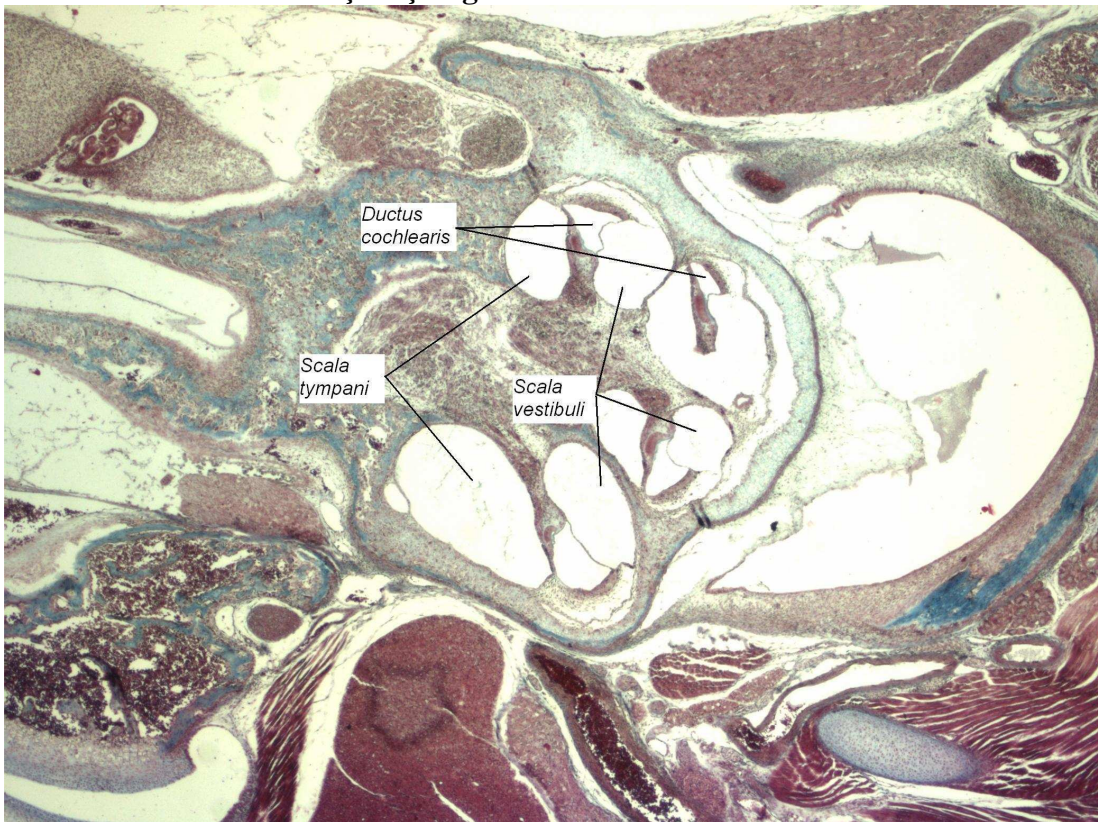
### 1. Auss ārējā eja.



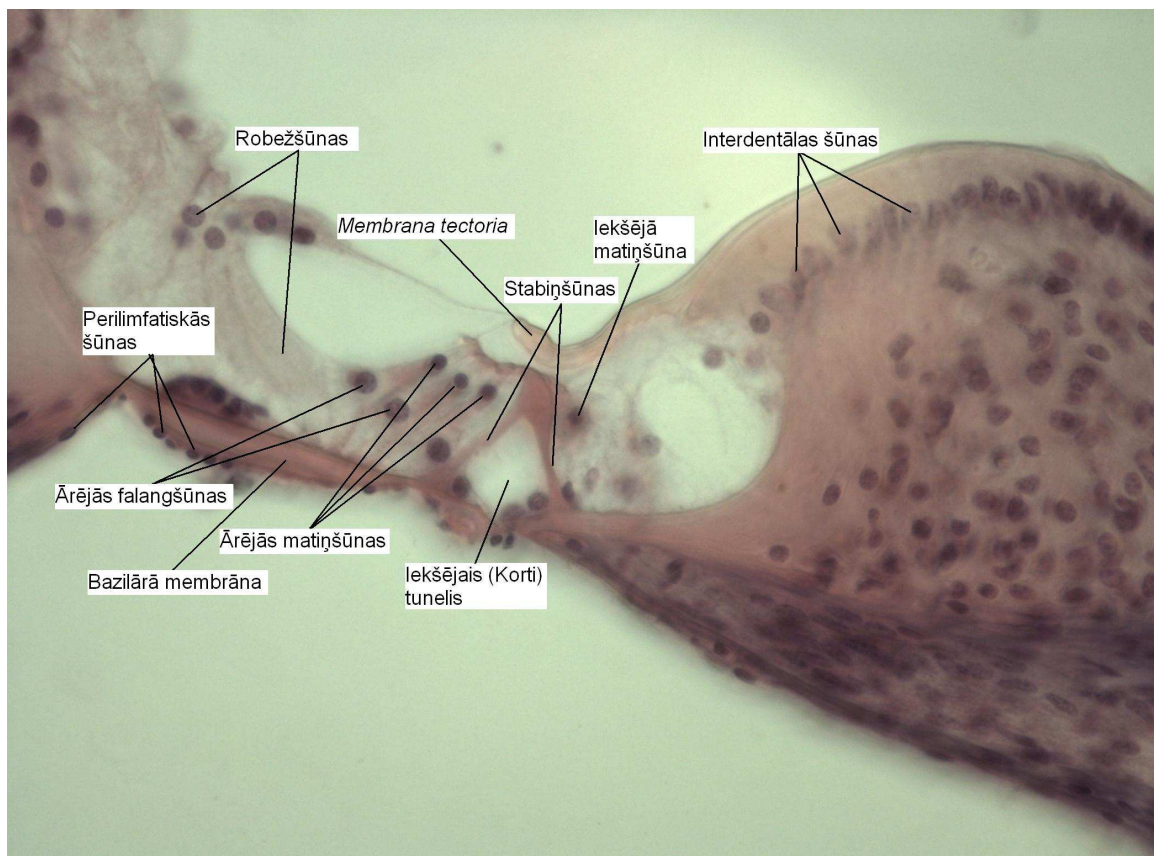
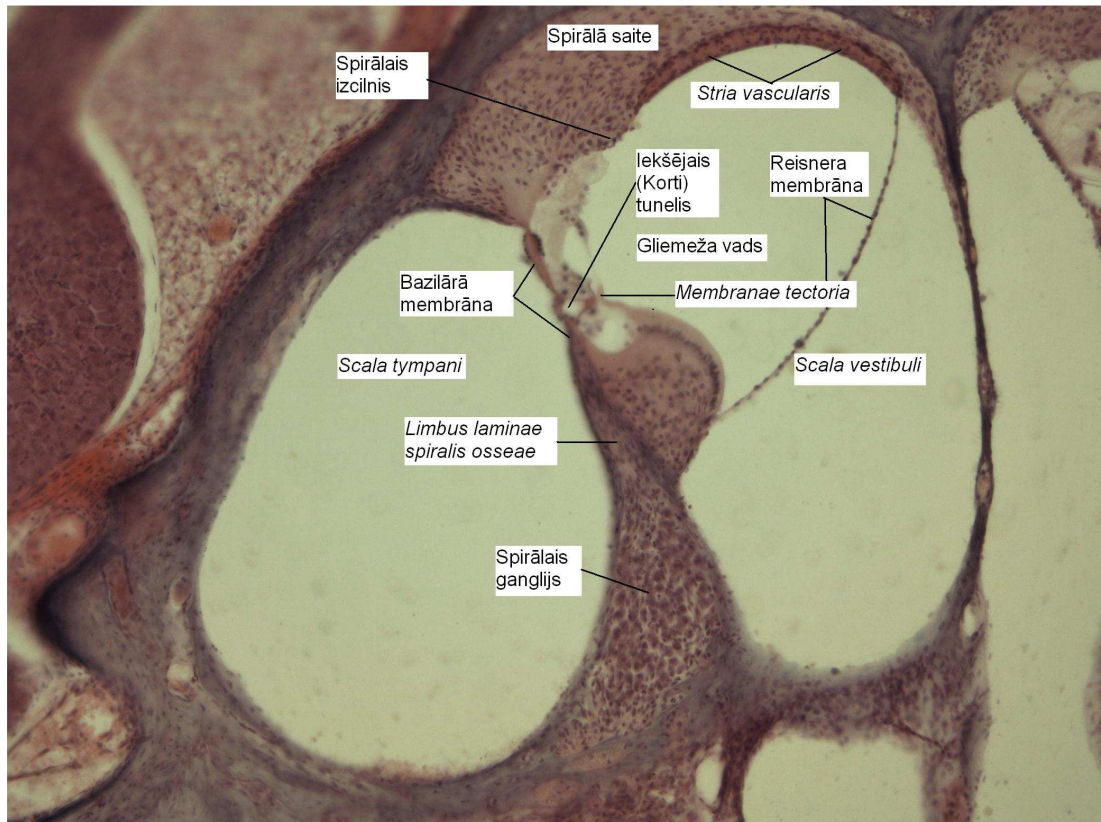




## 2. Gliemeža kaulainās daļas šķērsgriezums.

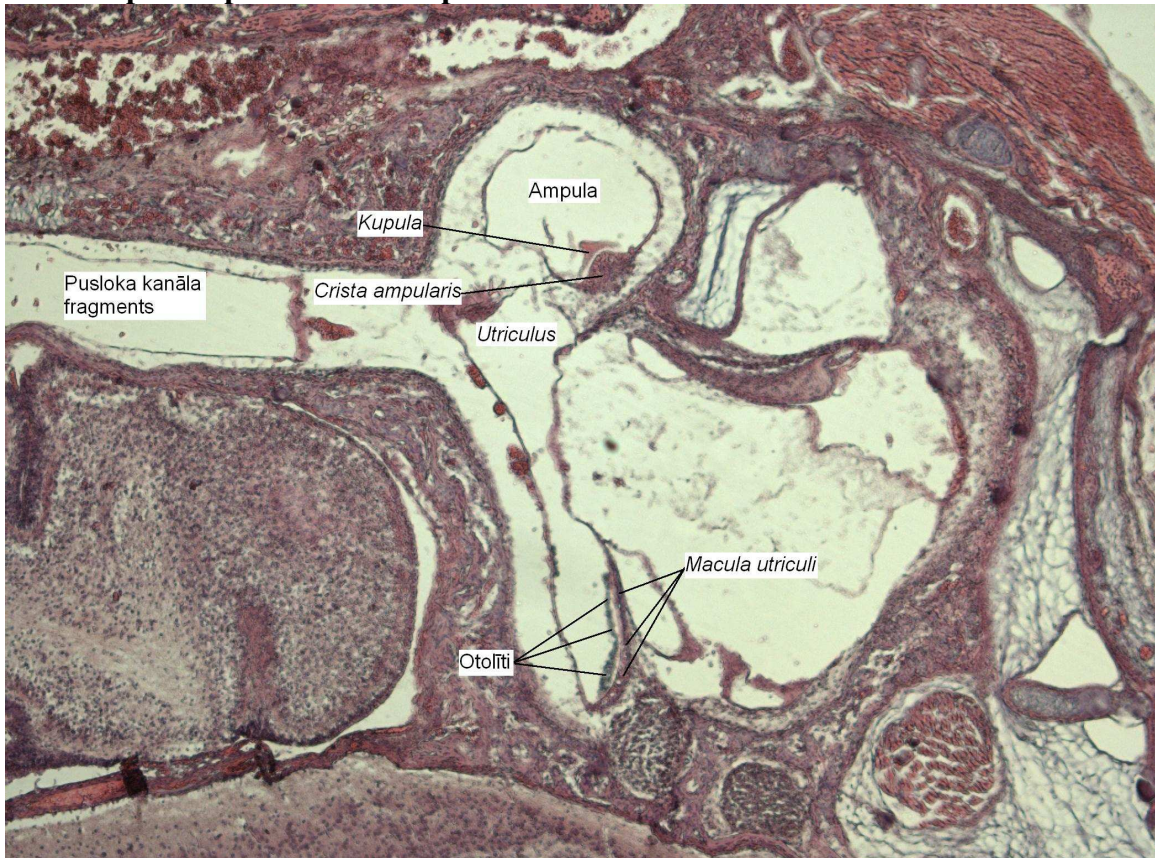








**Priekštelpas un pusloka kanālu plēvainais labirints.**





**4. *Cupula cristae ampullaris.***



**5. Gliemeža *stria vascularis.***

