

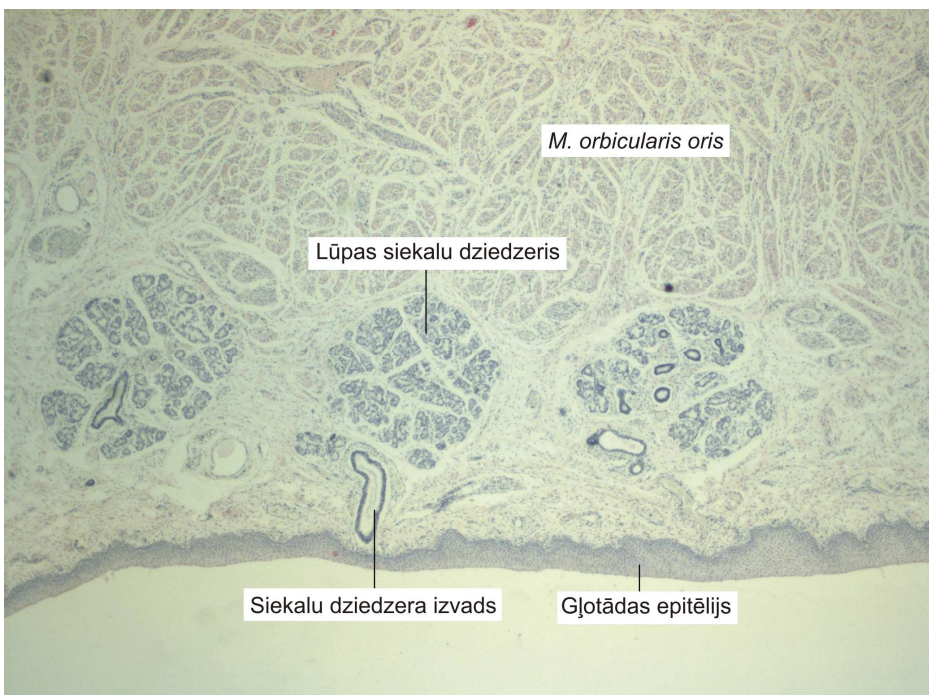
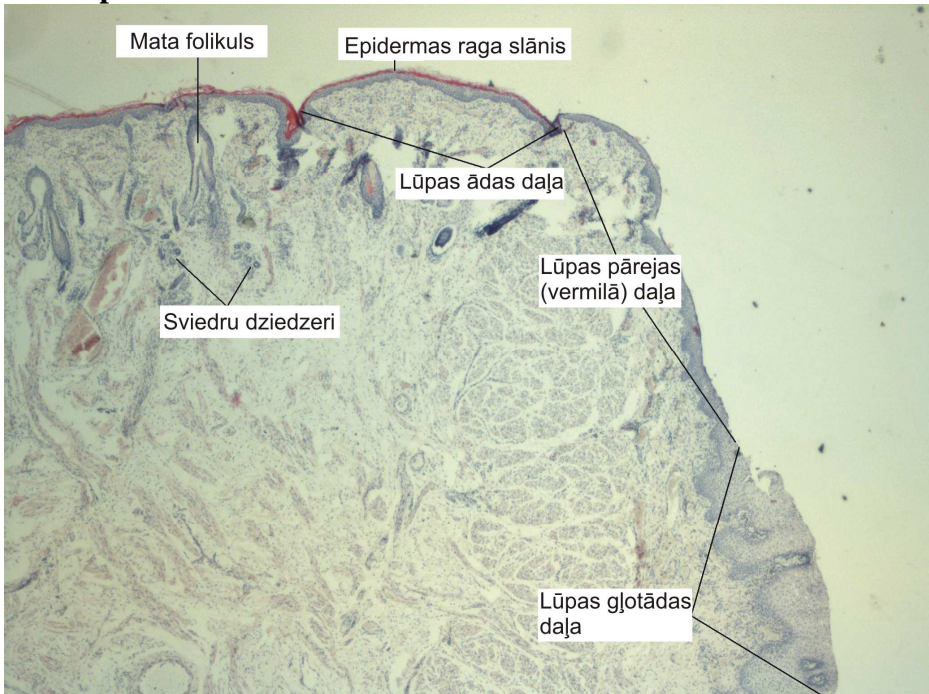
Speciālās histoloģijas kurss

Laboratorijas darbos izmantoto preparātu attēlu atlants

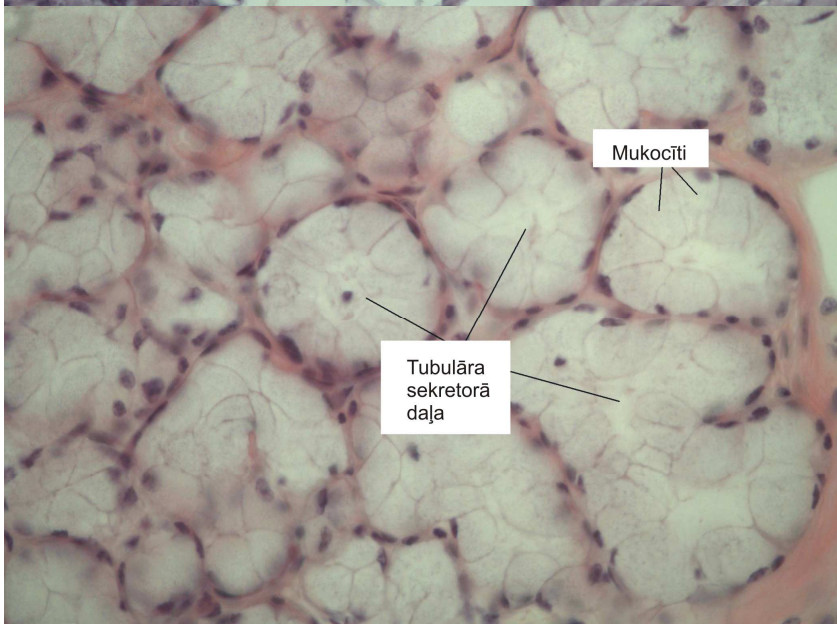
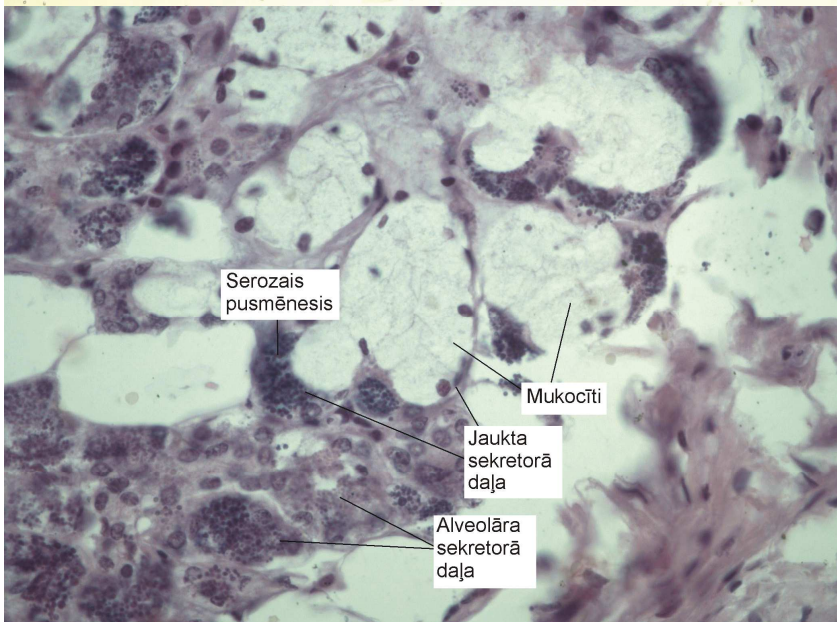
Rīga 2011.

2. nodarbība Mutes dobuma orgāni, siekalu dziedzeri

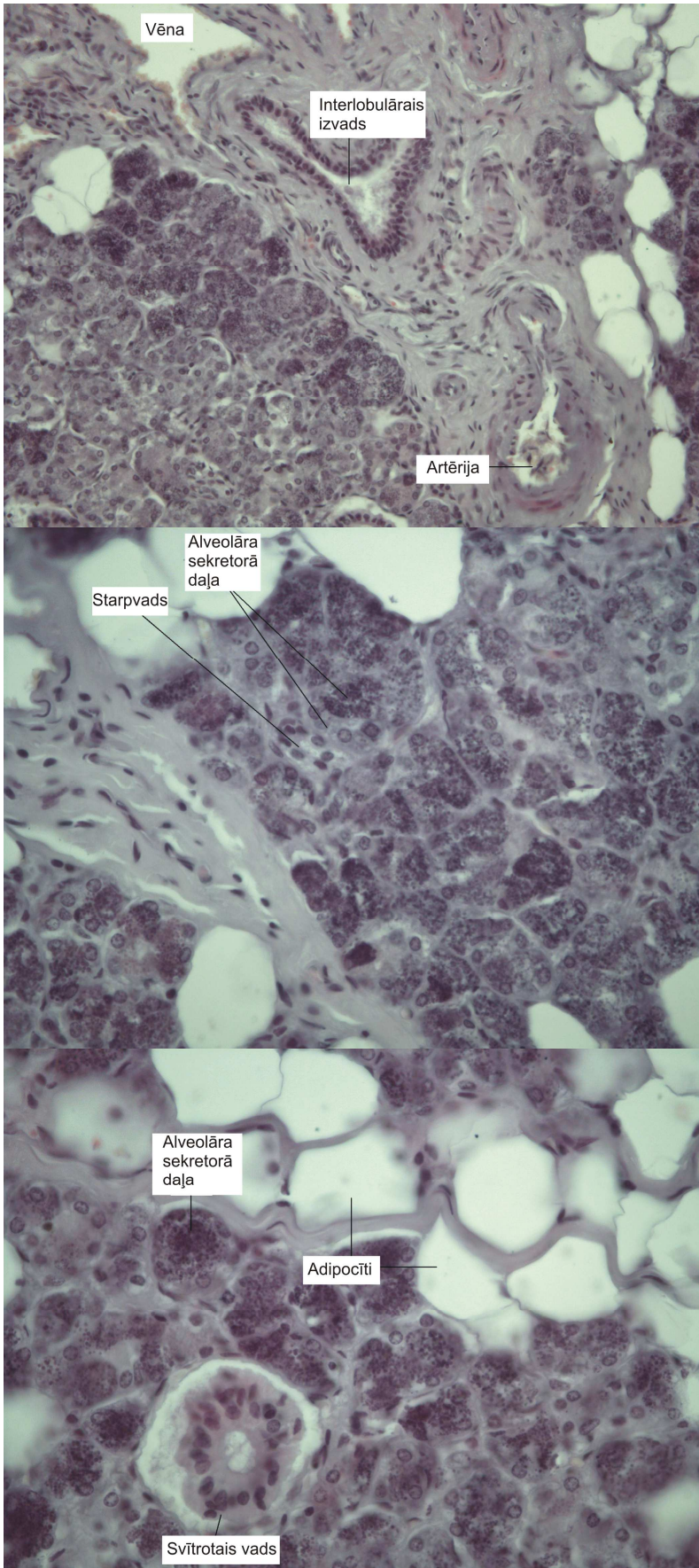
1. – Lūpa.



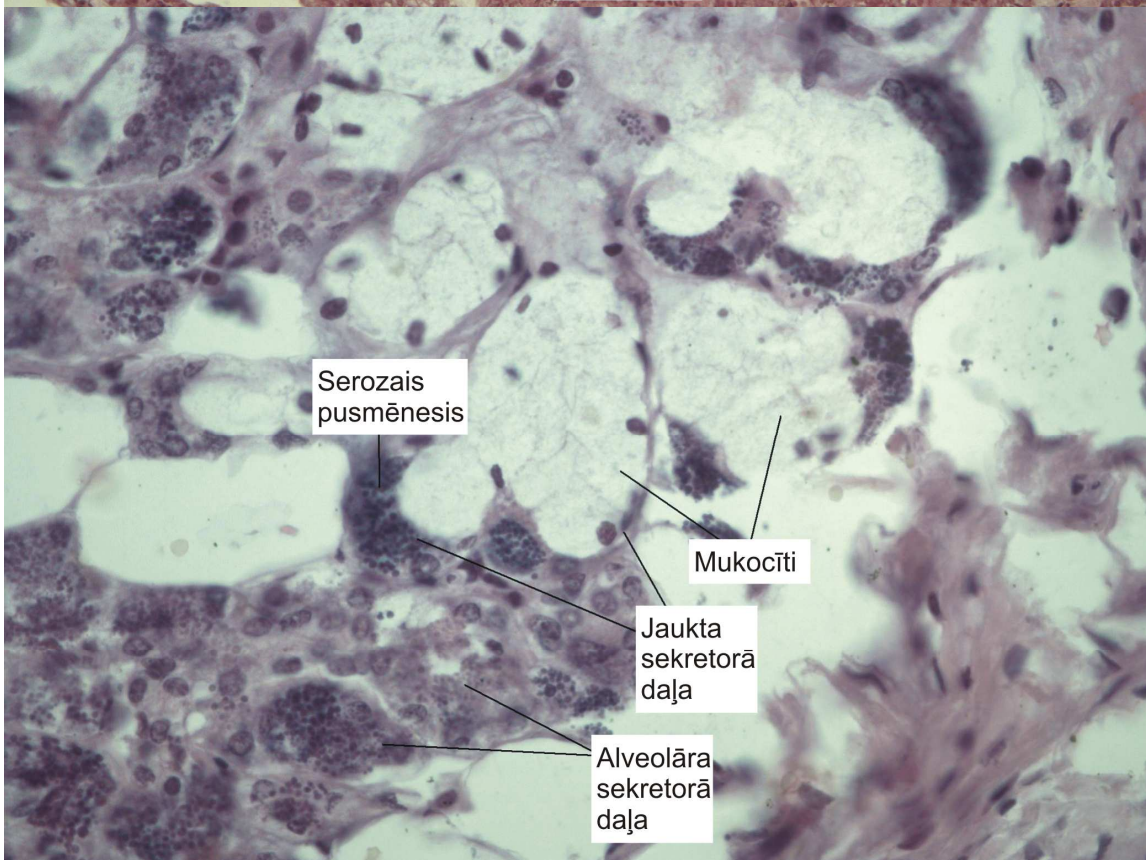
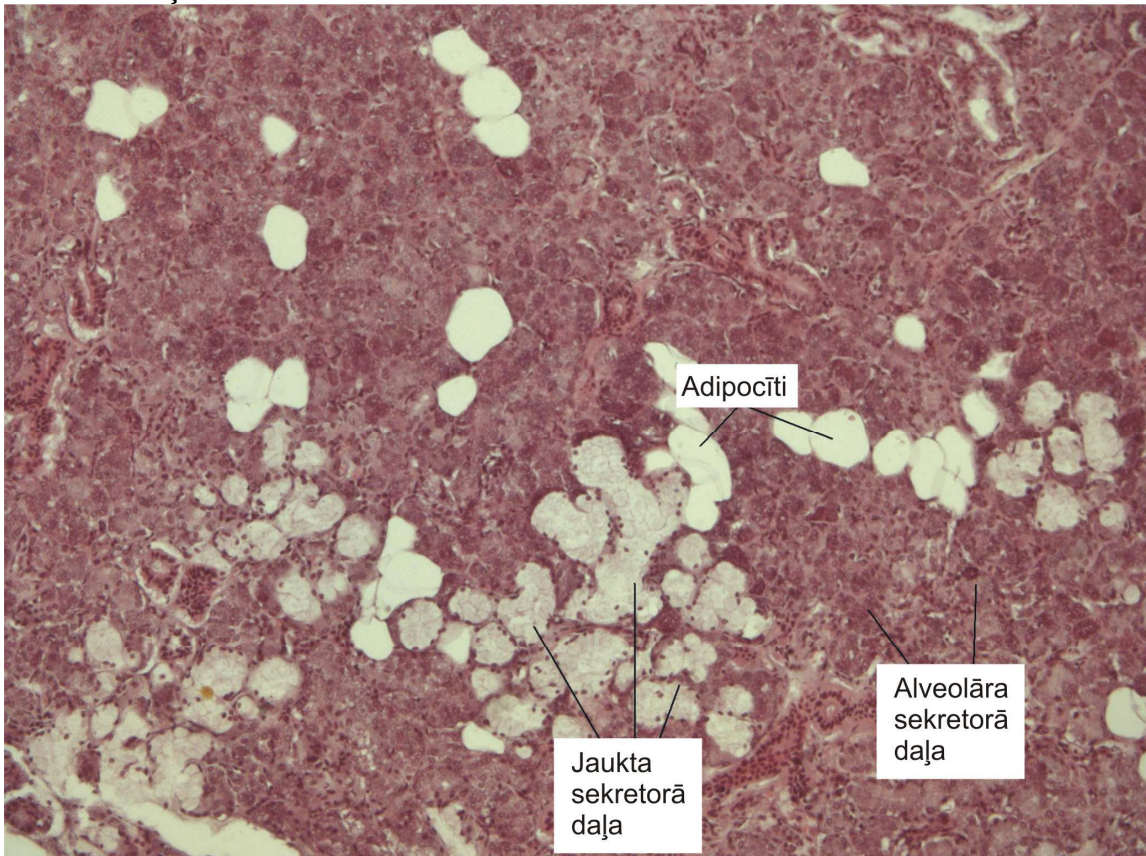
2. – Zemmes siekalu dziedzeris.



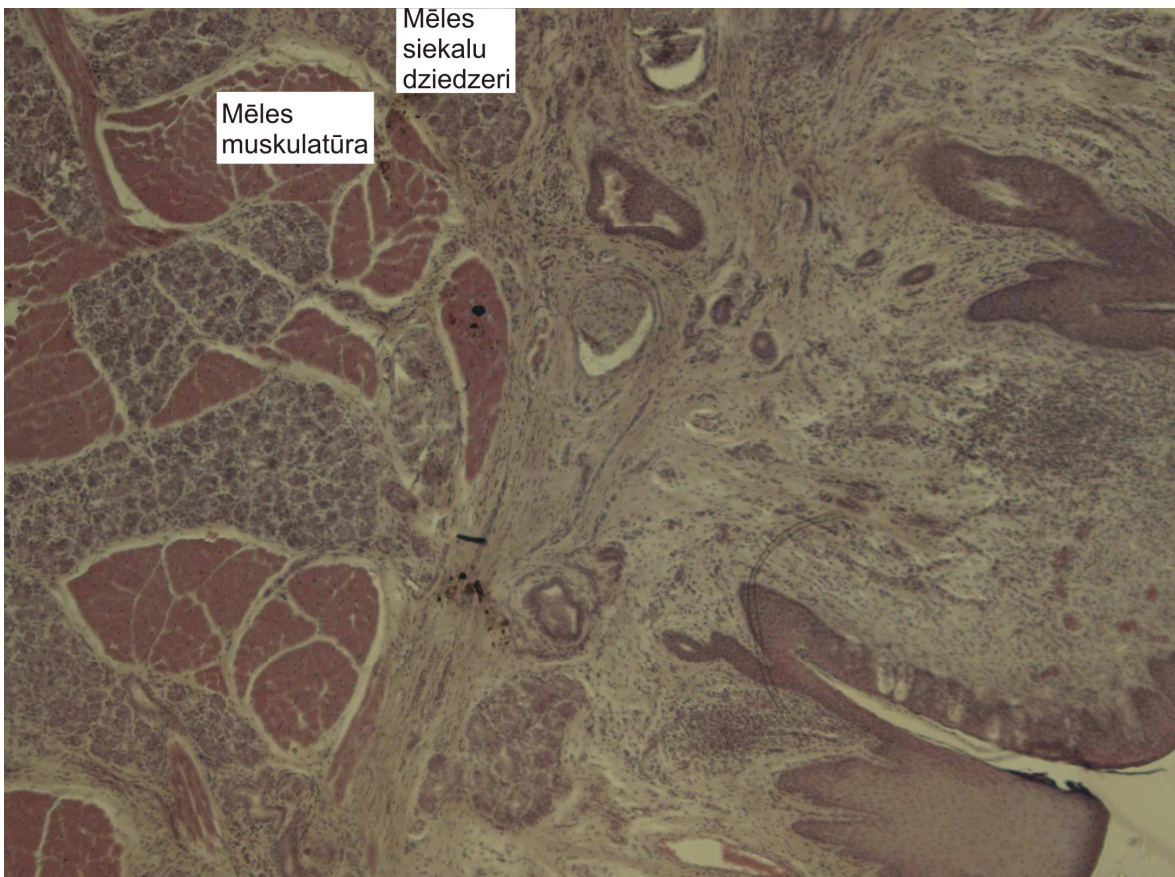
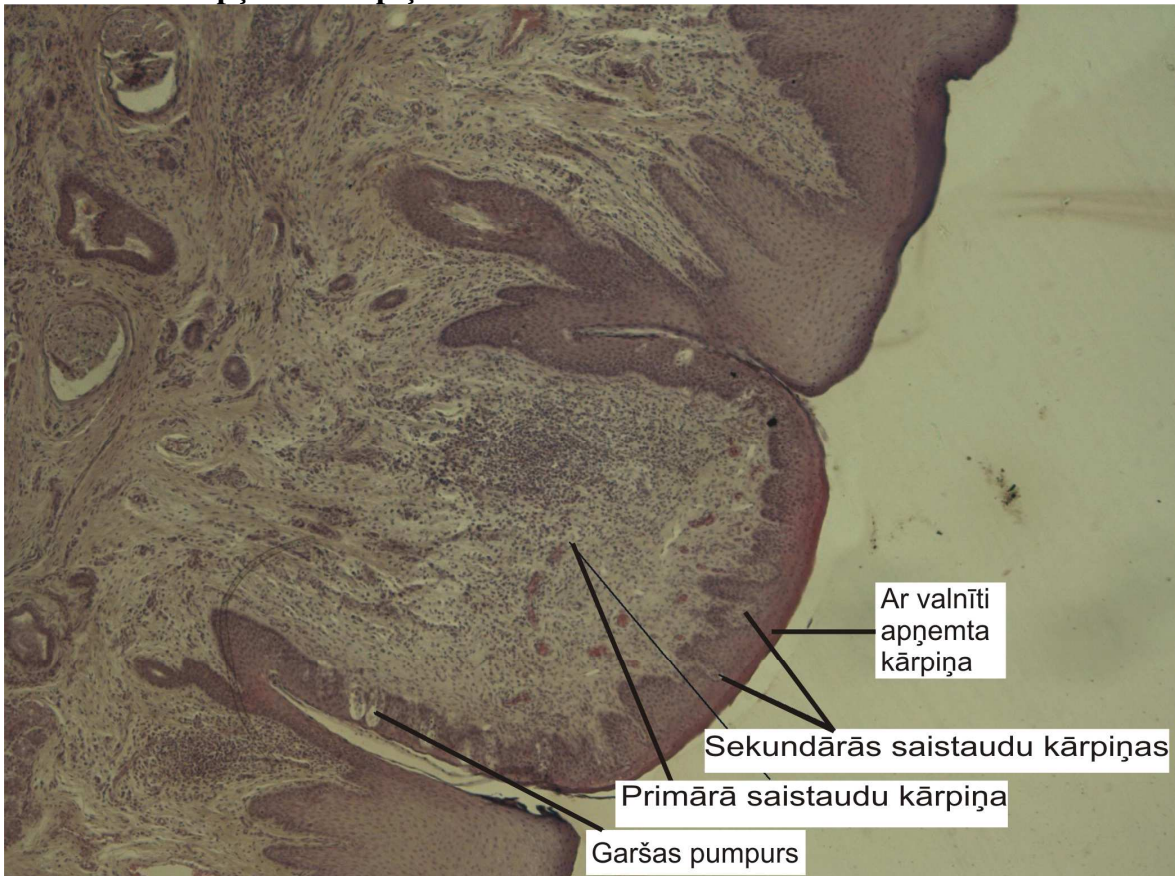
3. – Pieauss dziedzeris.



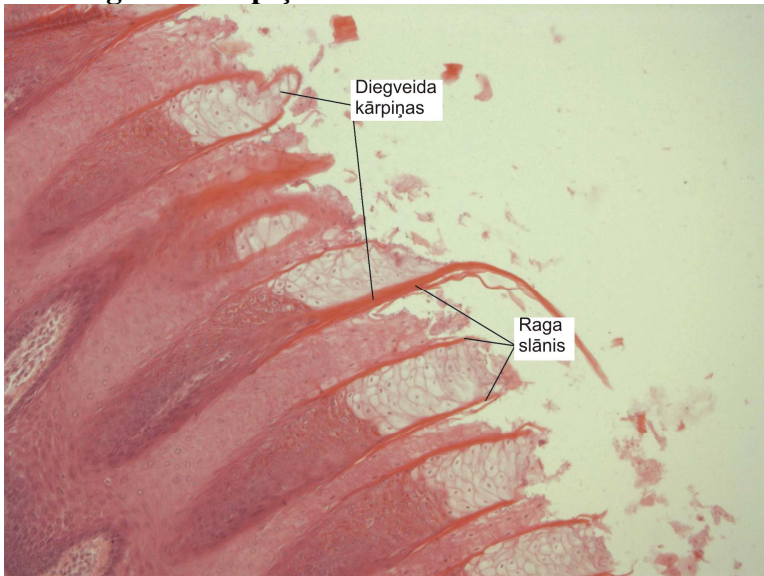
4. – Zemžokļa dziedzeris.



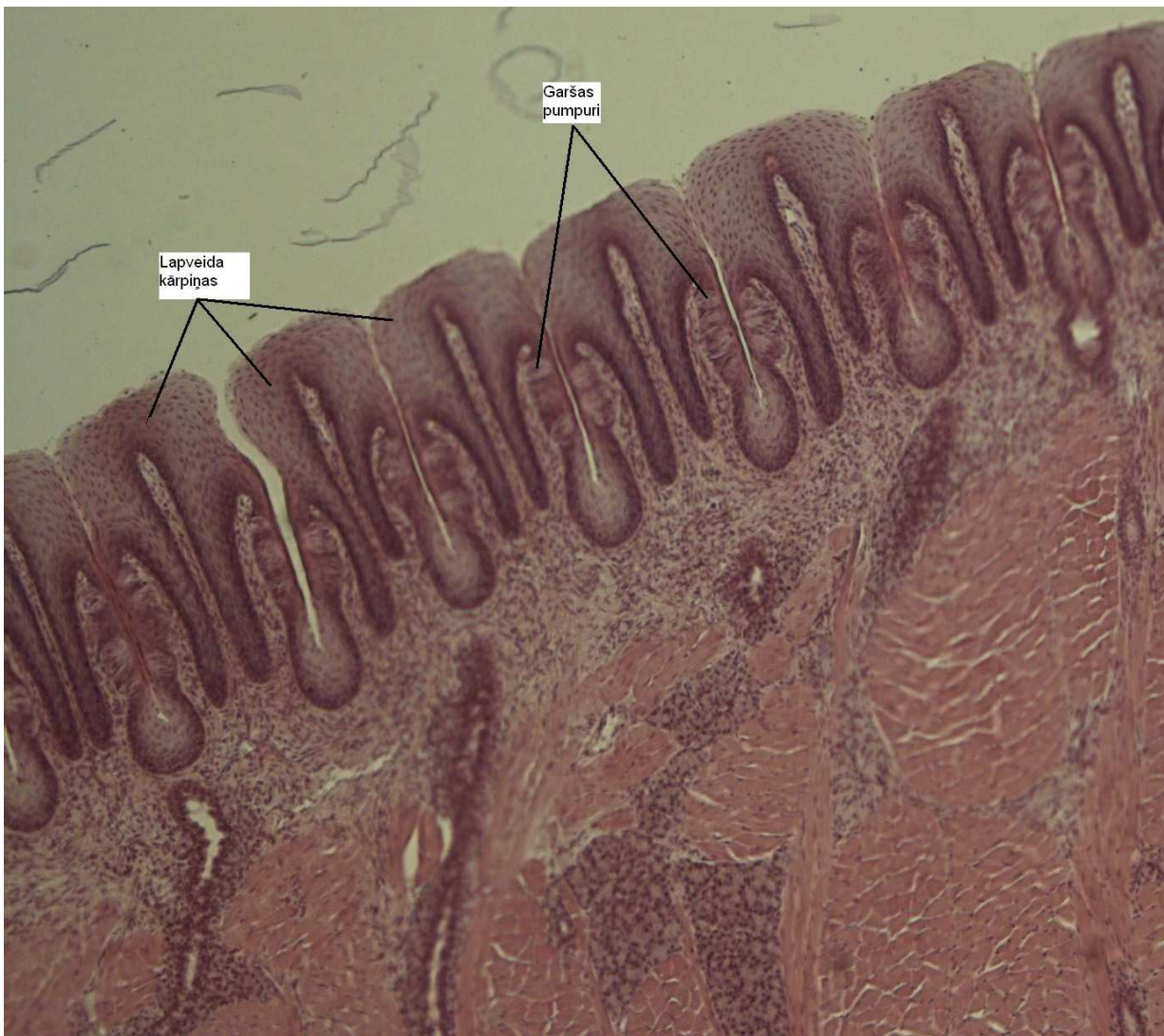
5. – Ar valnīti apņemta kārpīņa.



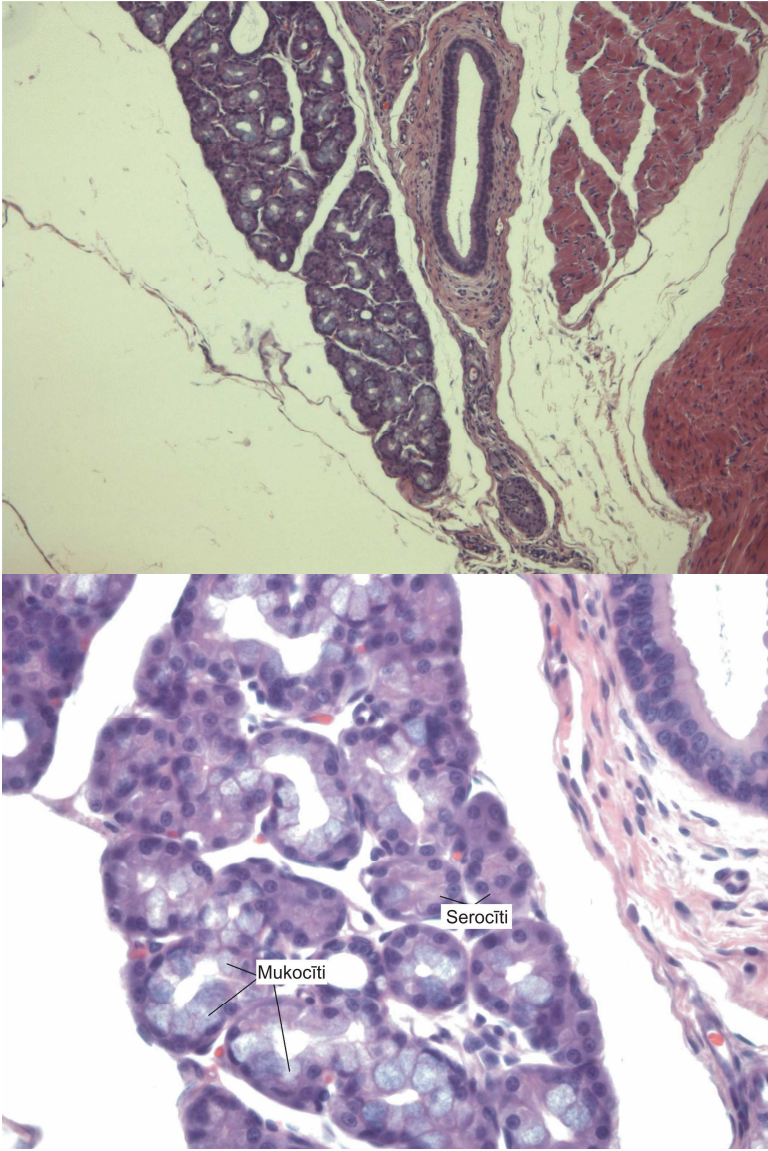
6. – Diegveida kārpiņa.



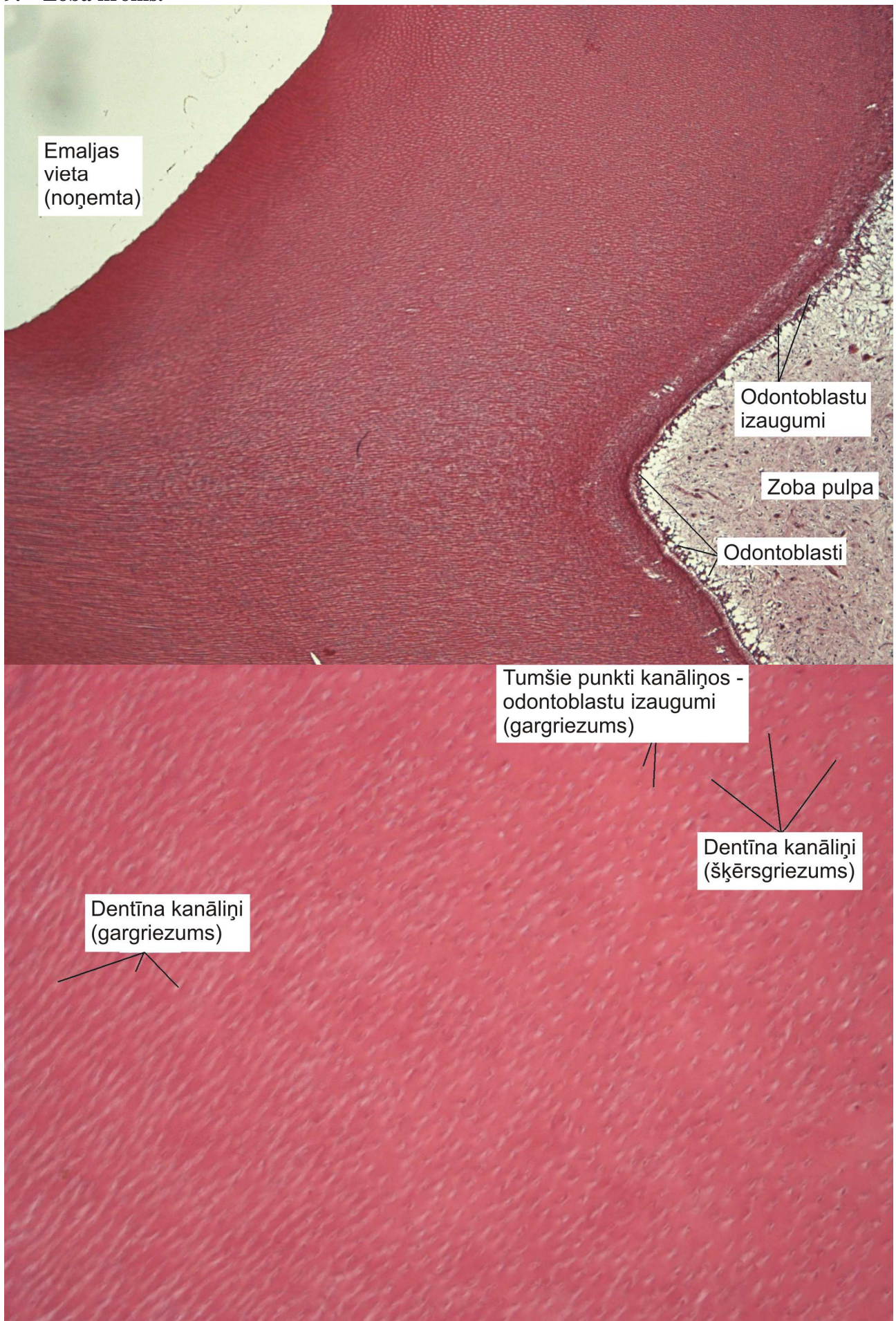
7. Lapveida kārpiņas

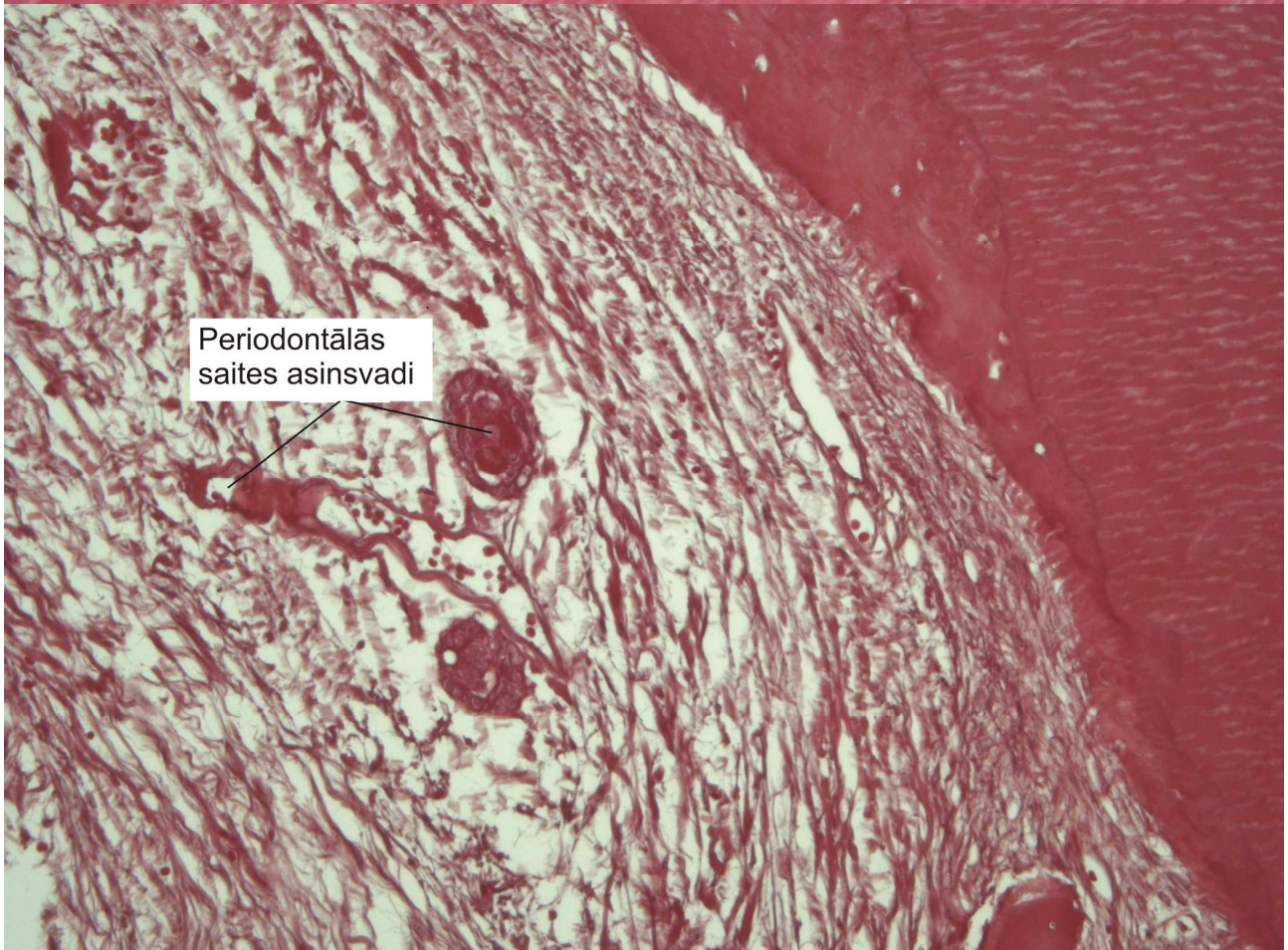
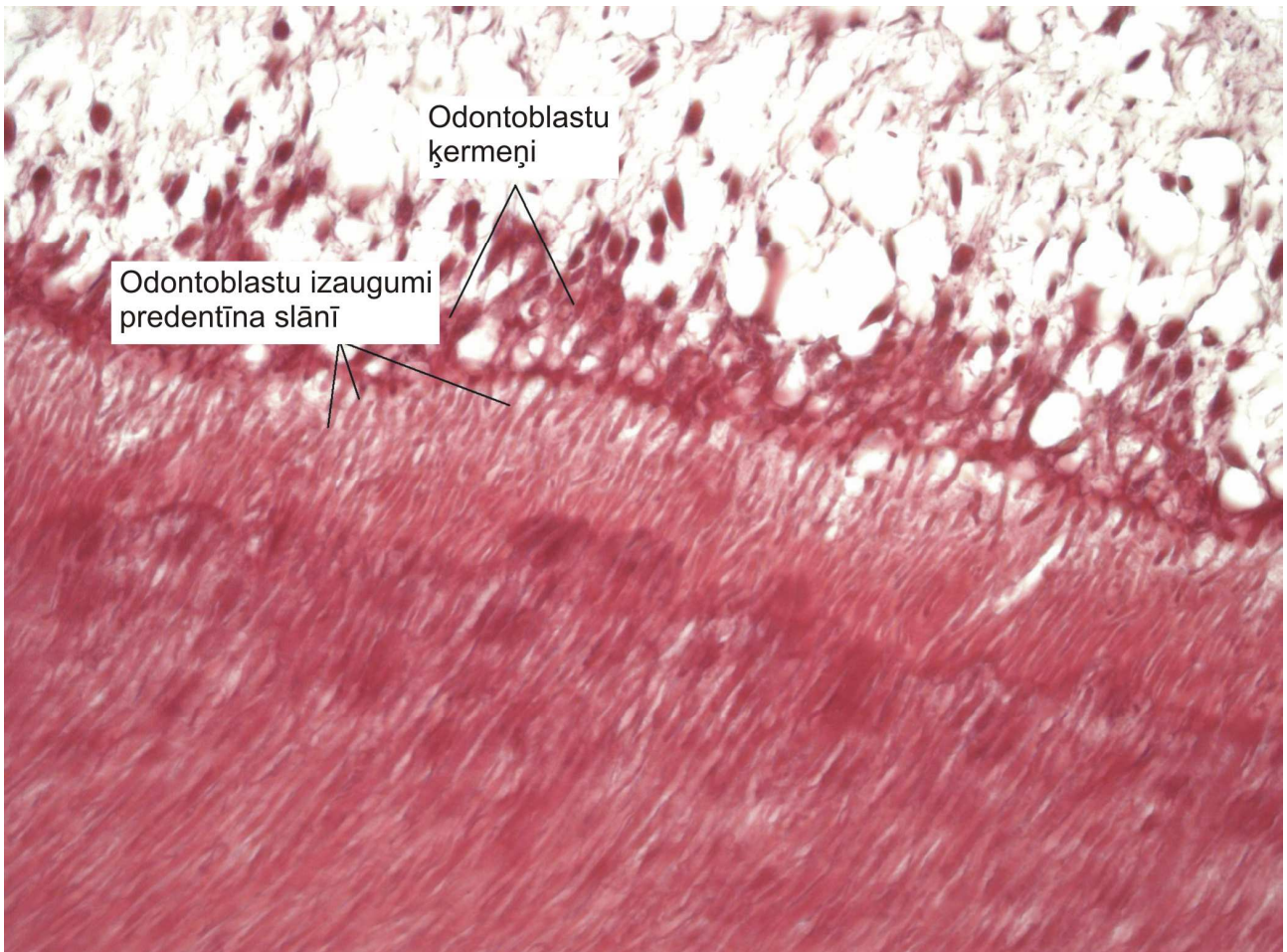


8. – Jaundzimušā *Glandula parotis*.

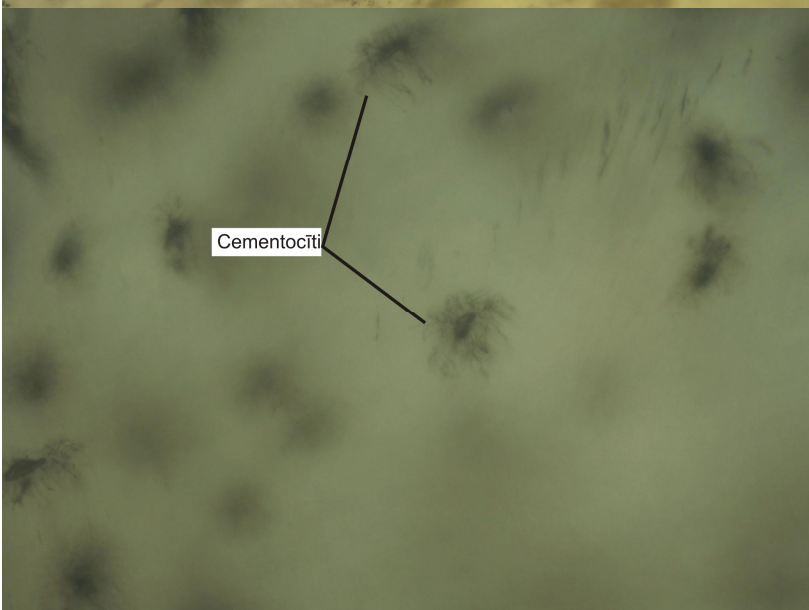
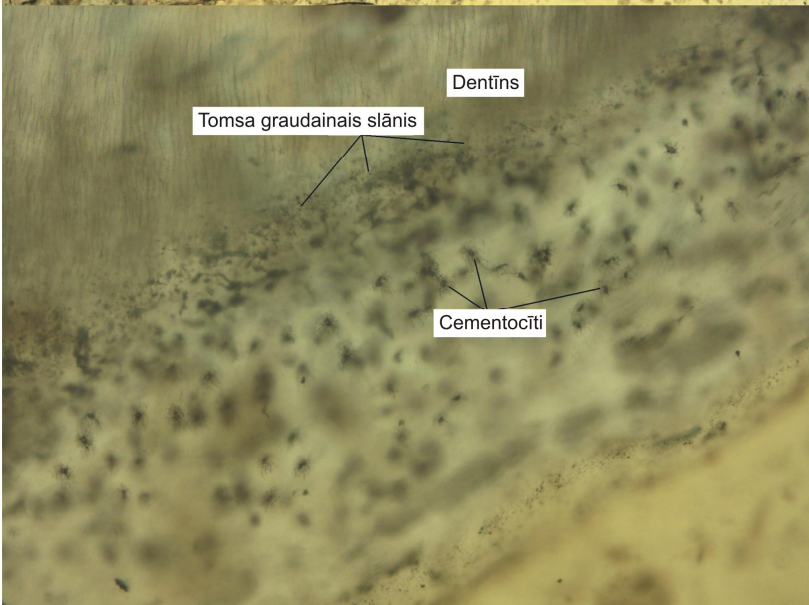
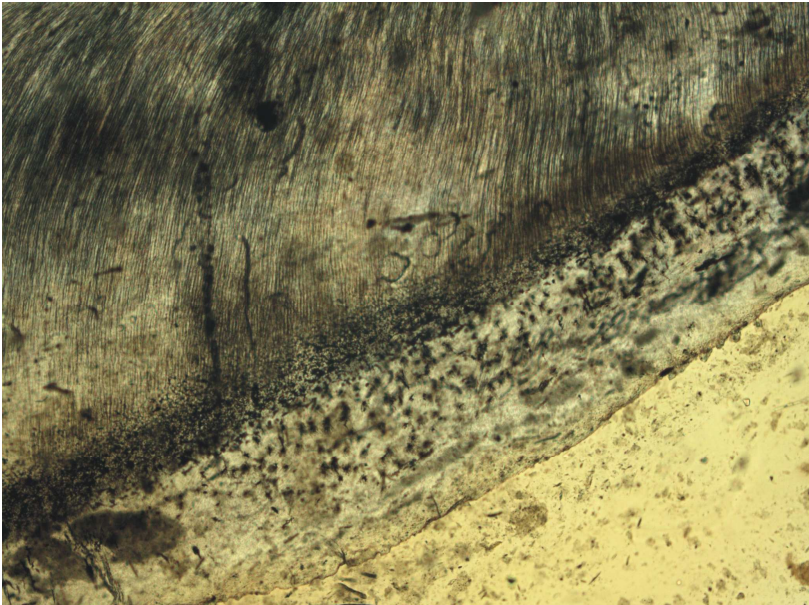


9. – Zoba kronis.

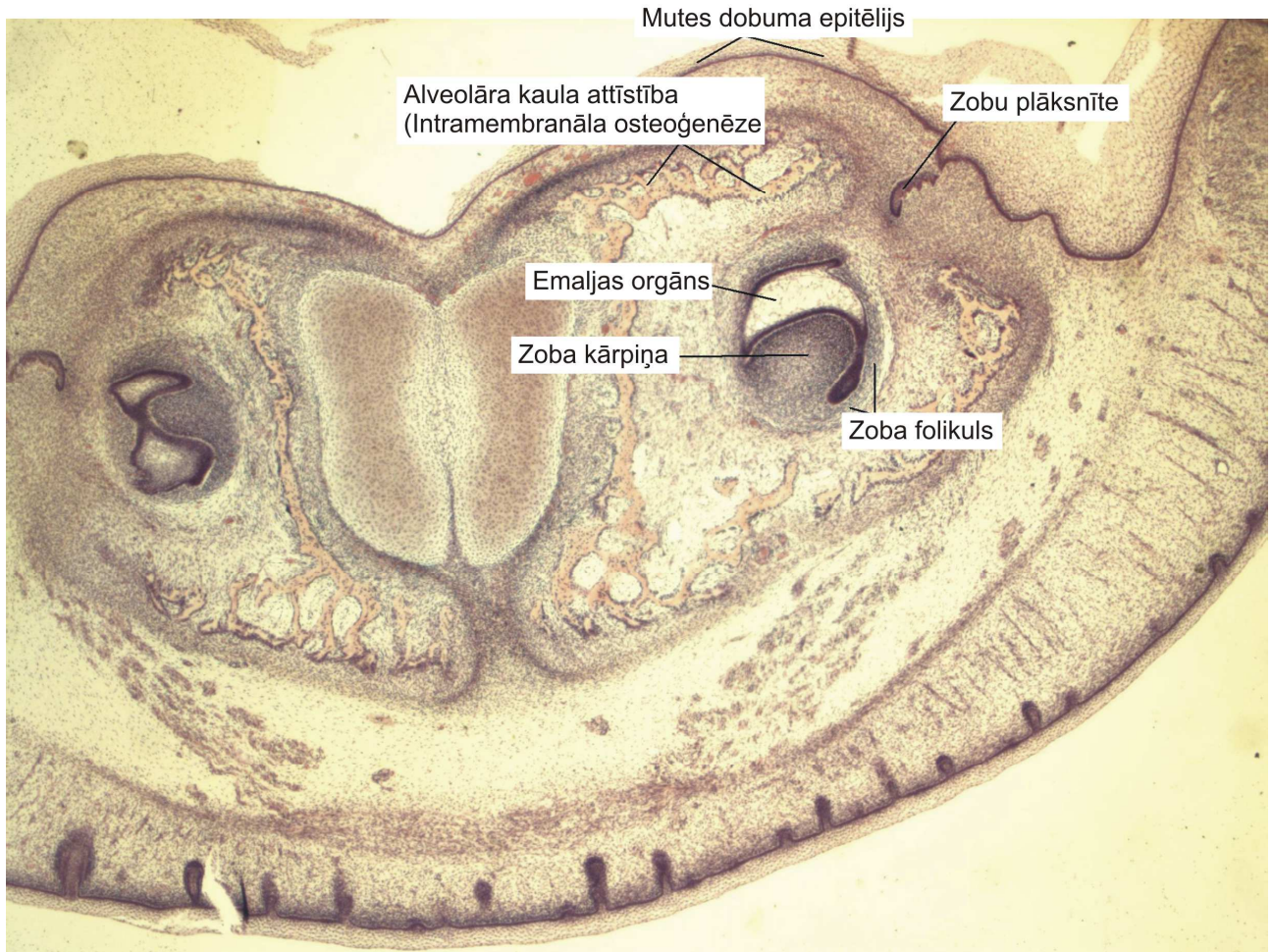




10. – Zoba cements.



11. – Zoba kroņa agrīna attīstība.



12. – Zoba kroņa vēlīna attīstība.

