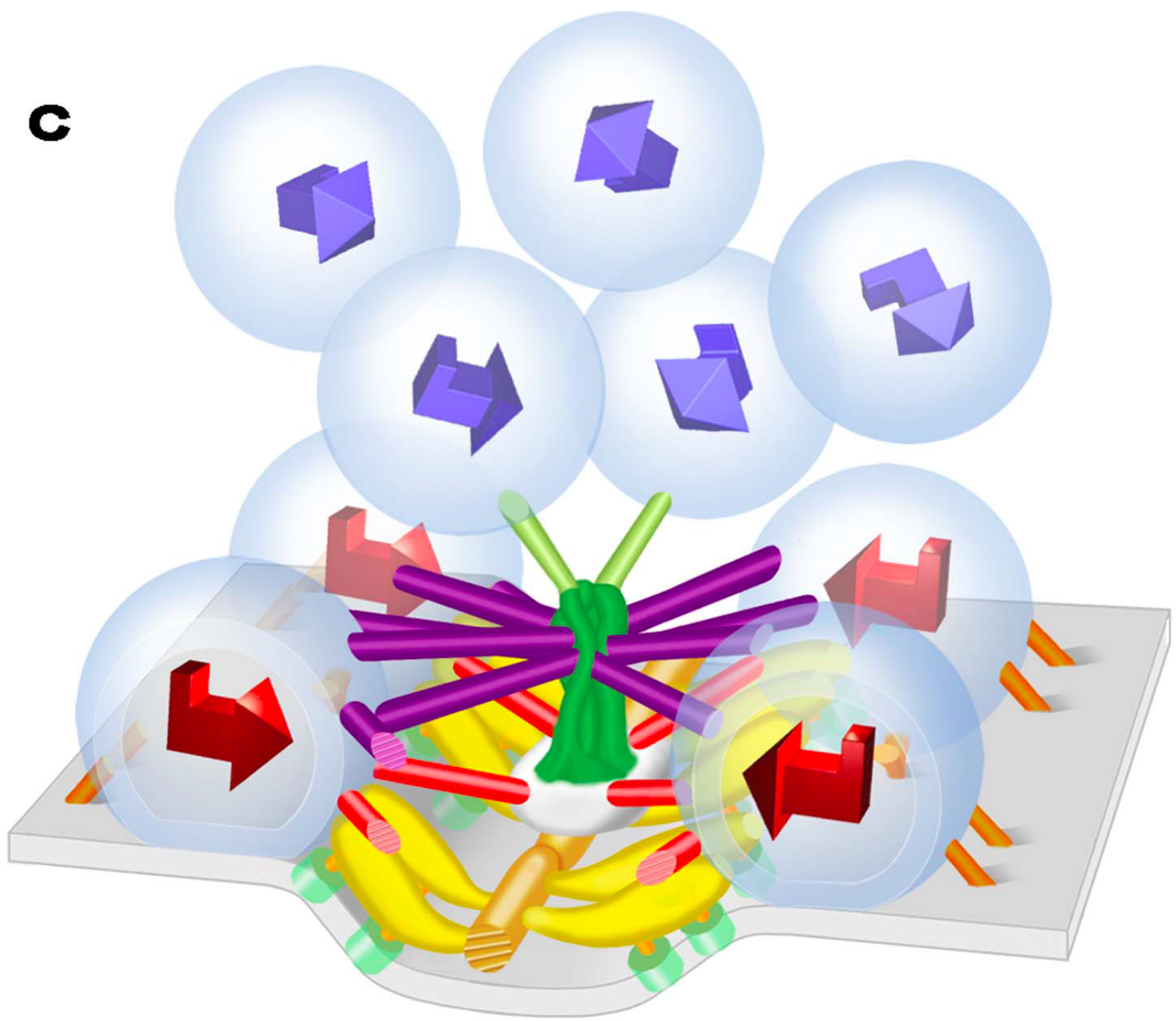
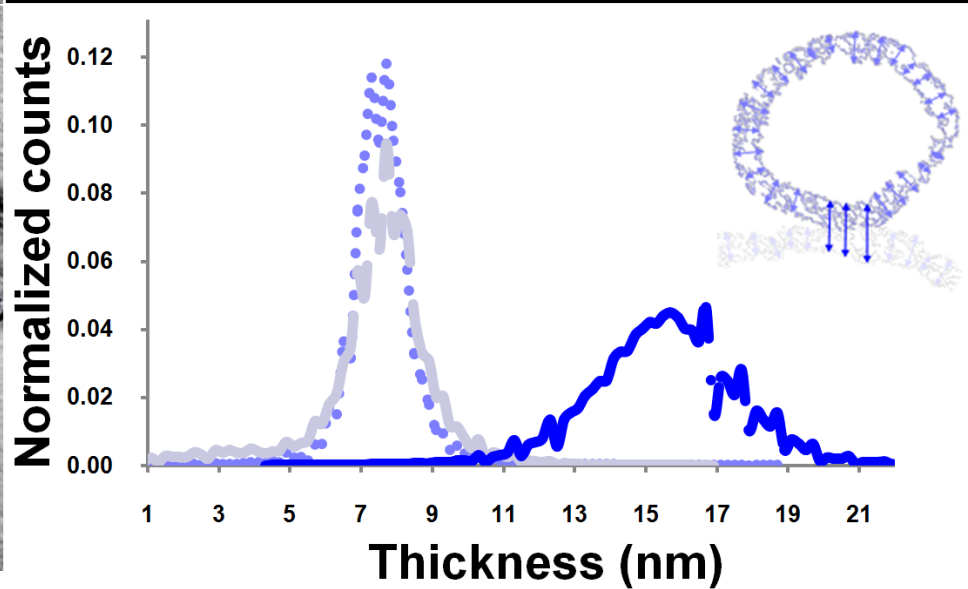
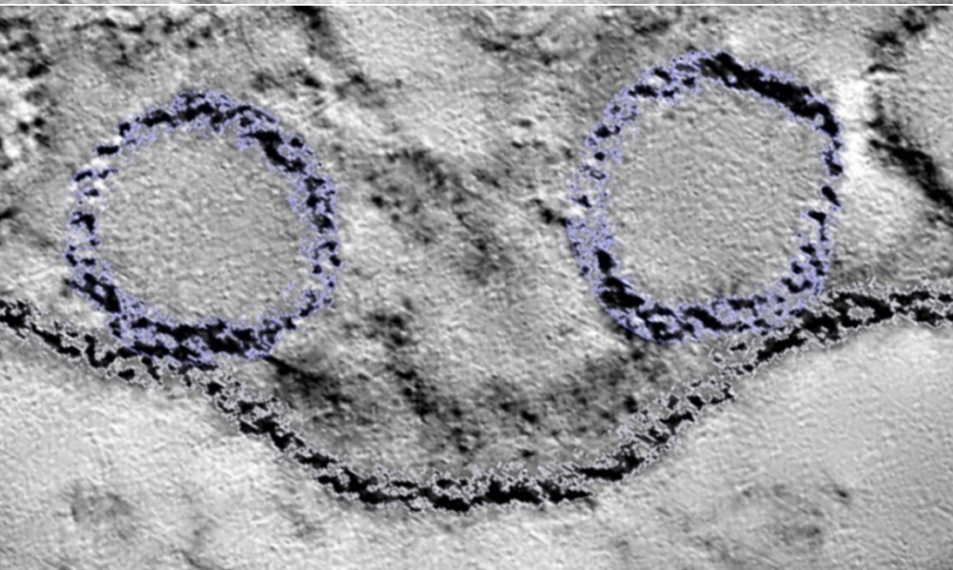
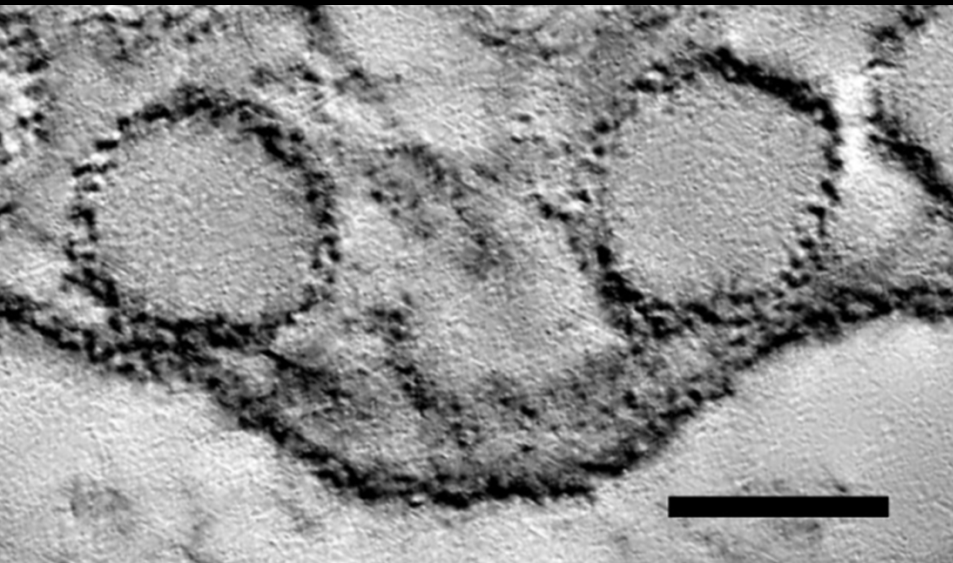




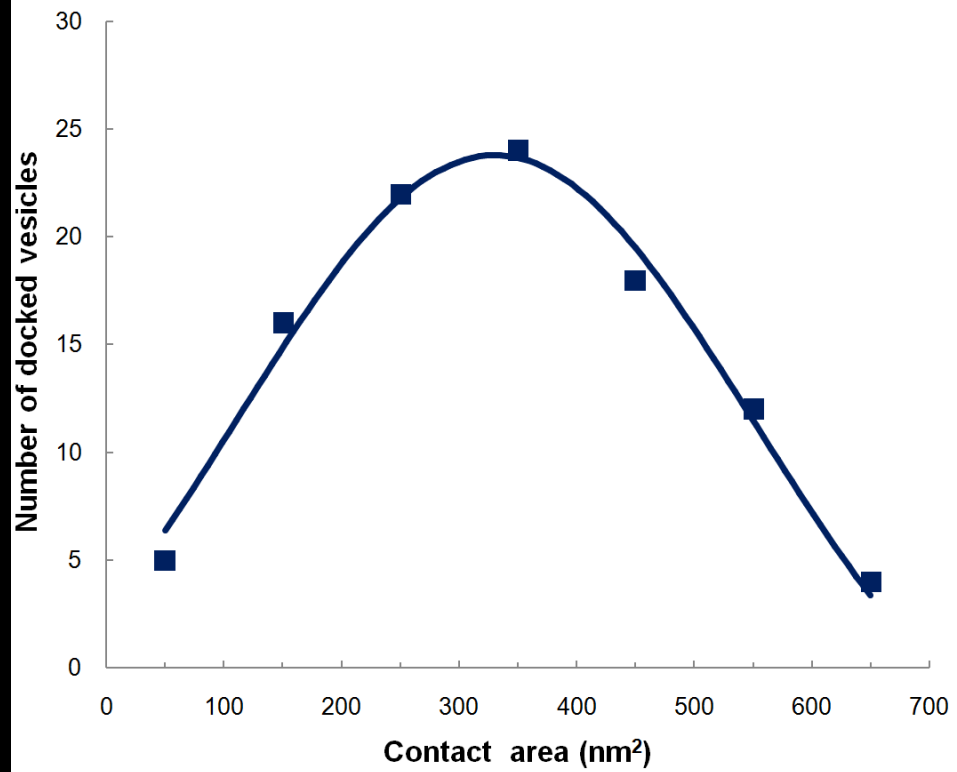
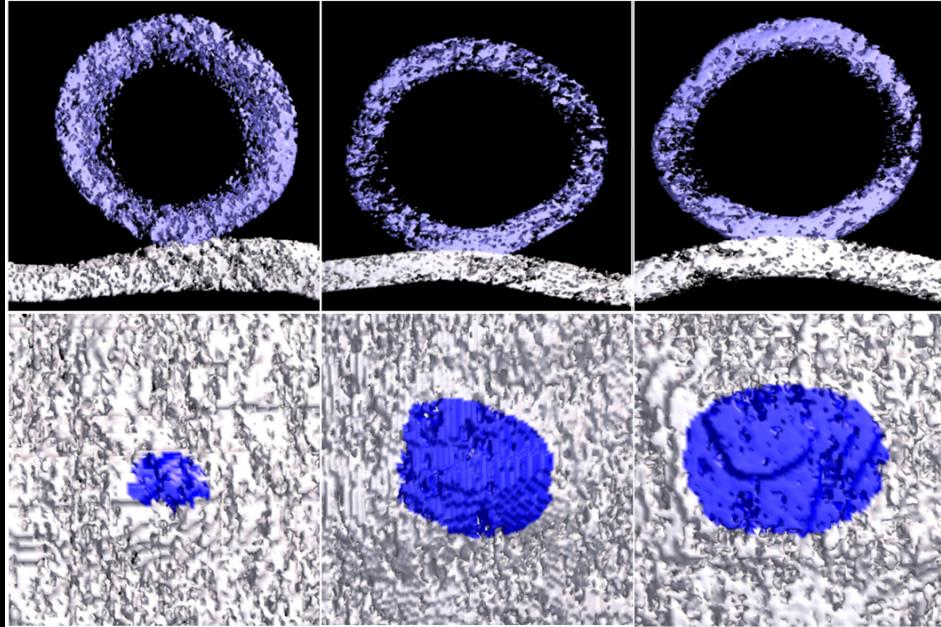
**C**

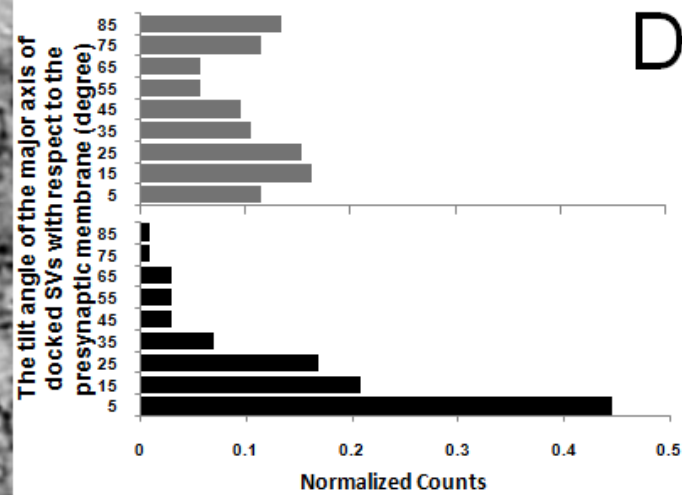
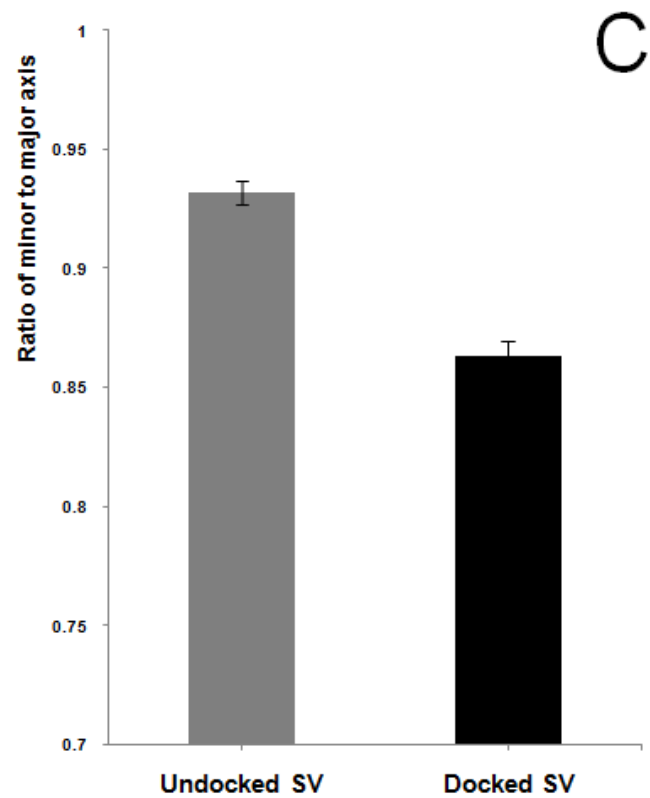


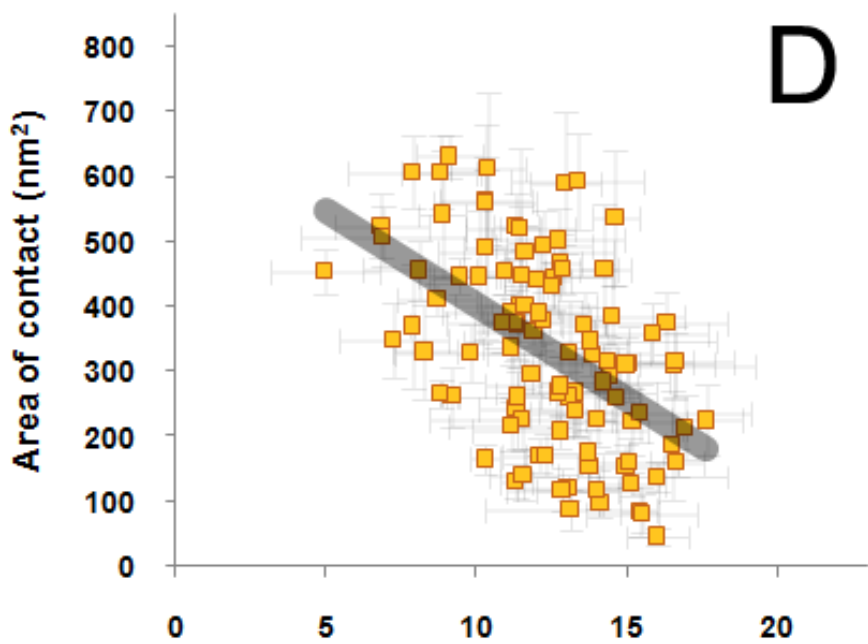
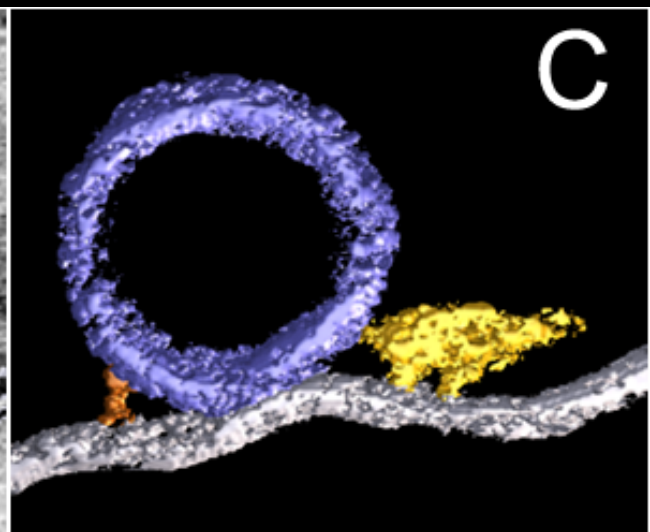
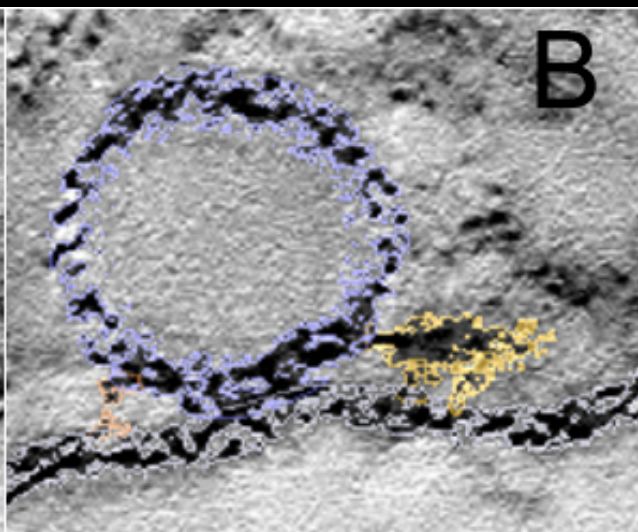
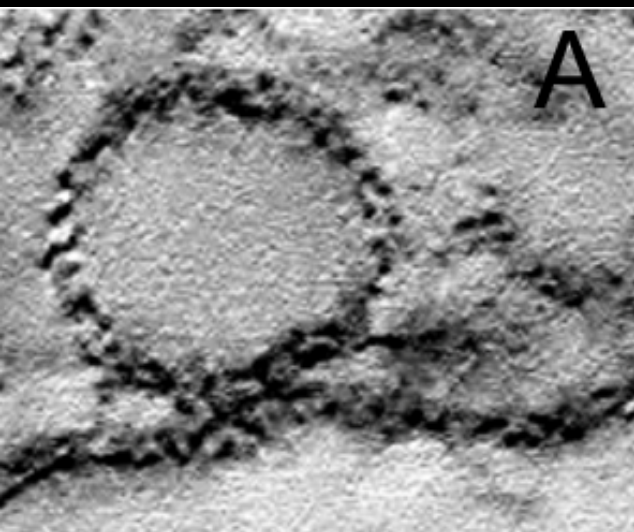




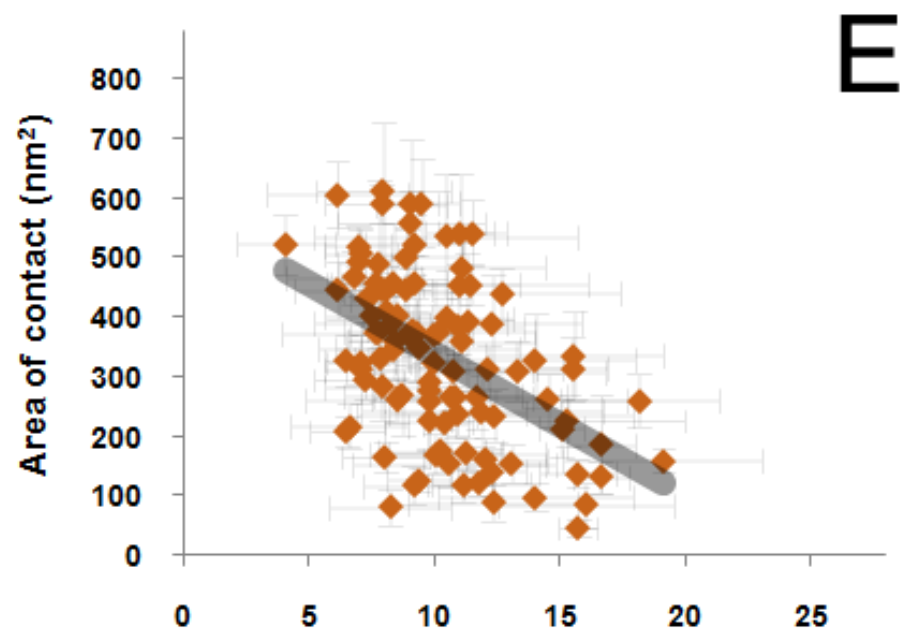




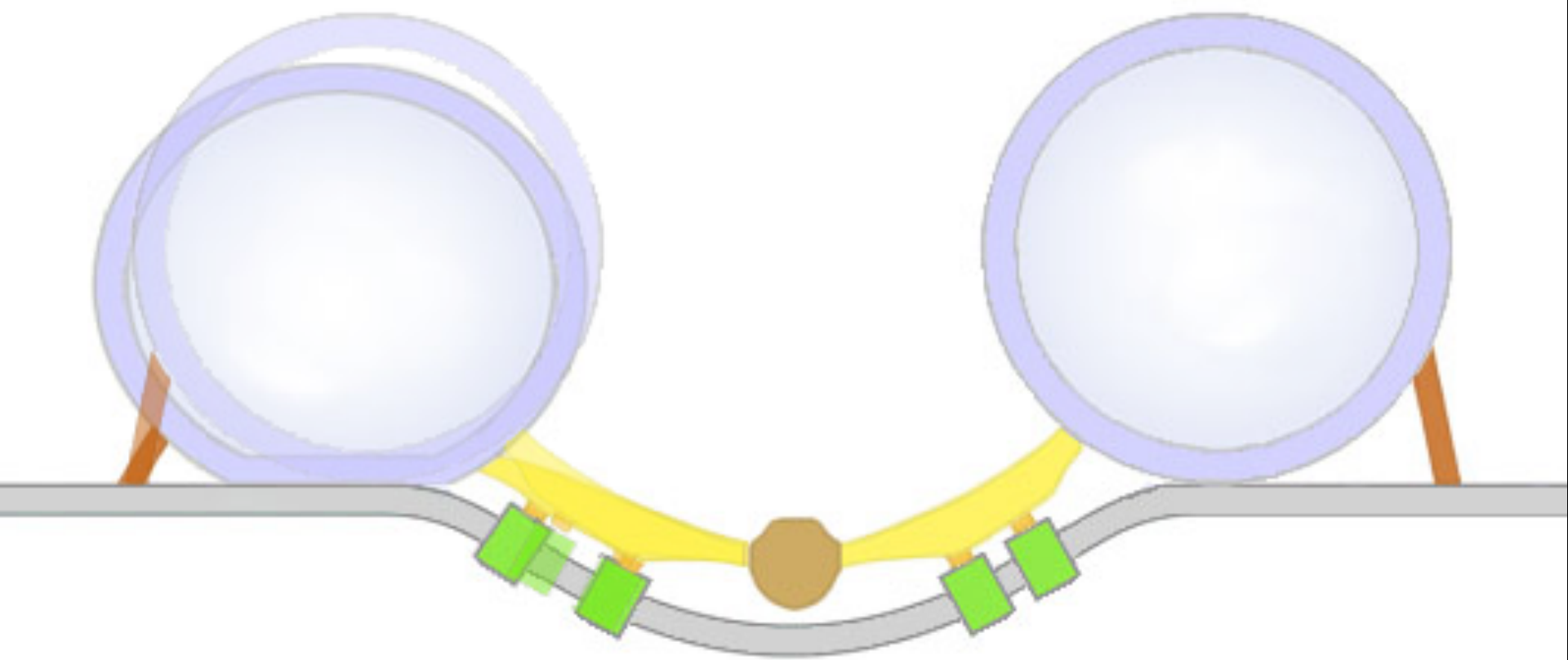




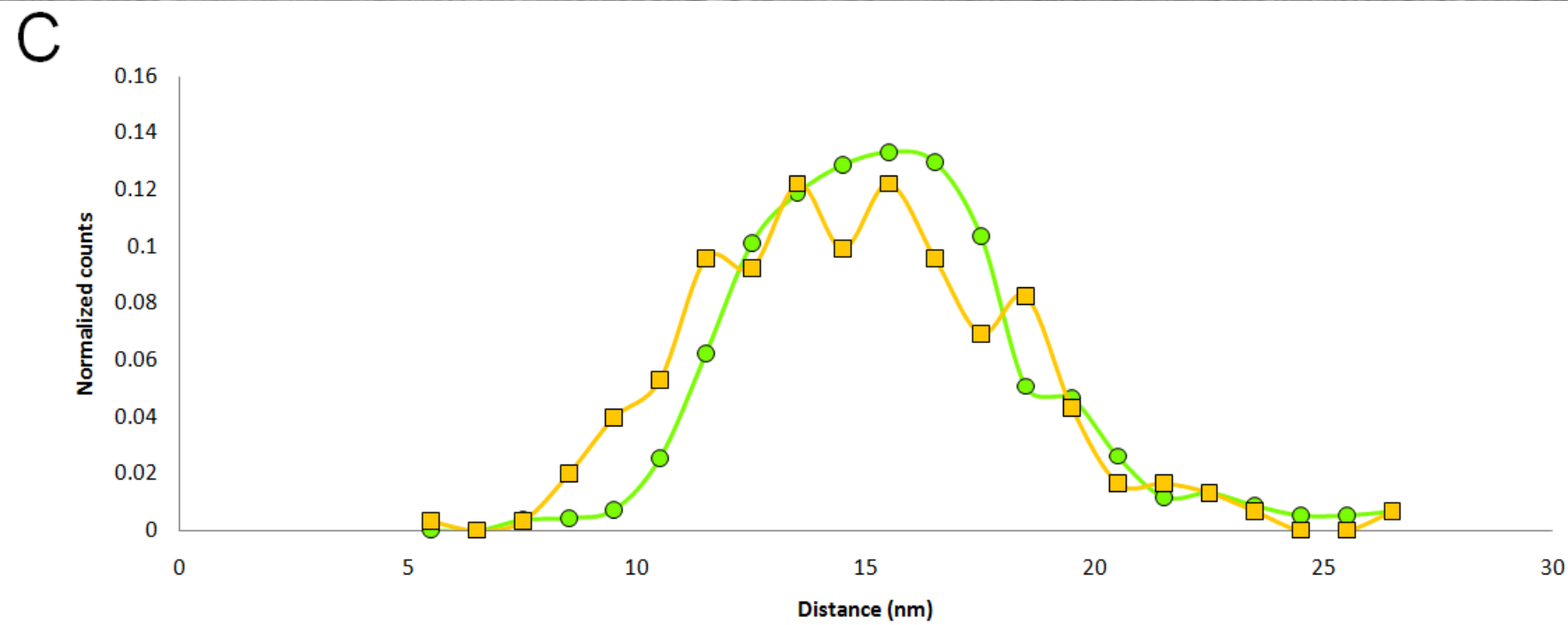
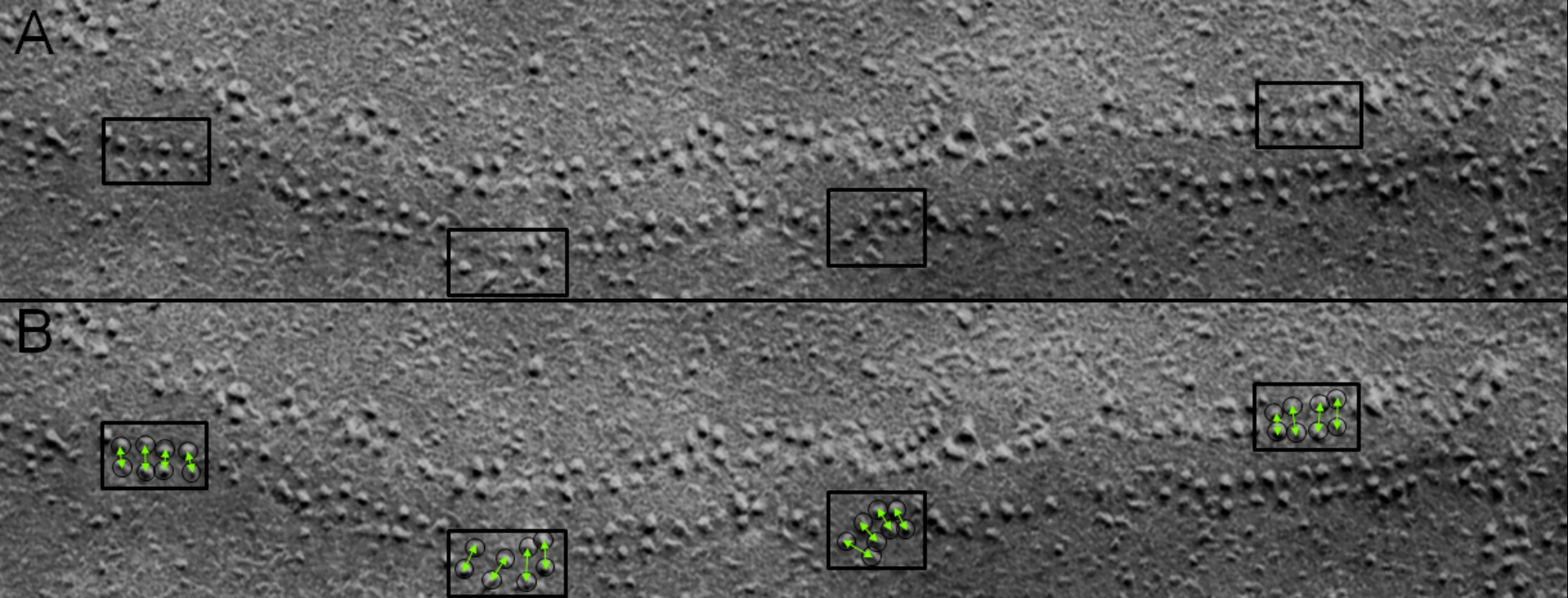
Average distance of rib-vesicle contact to the presynaptic membrane (nm)

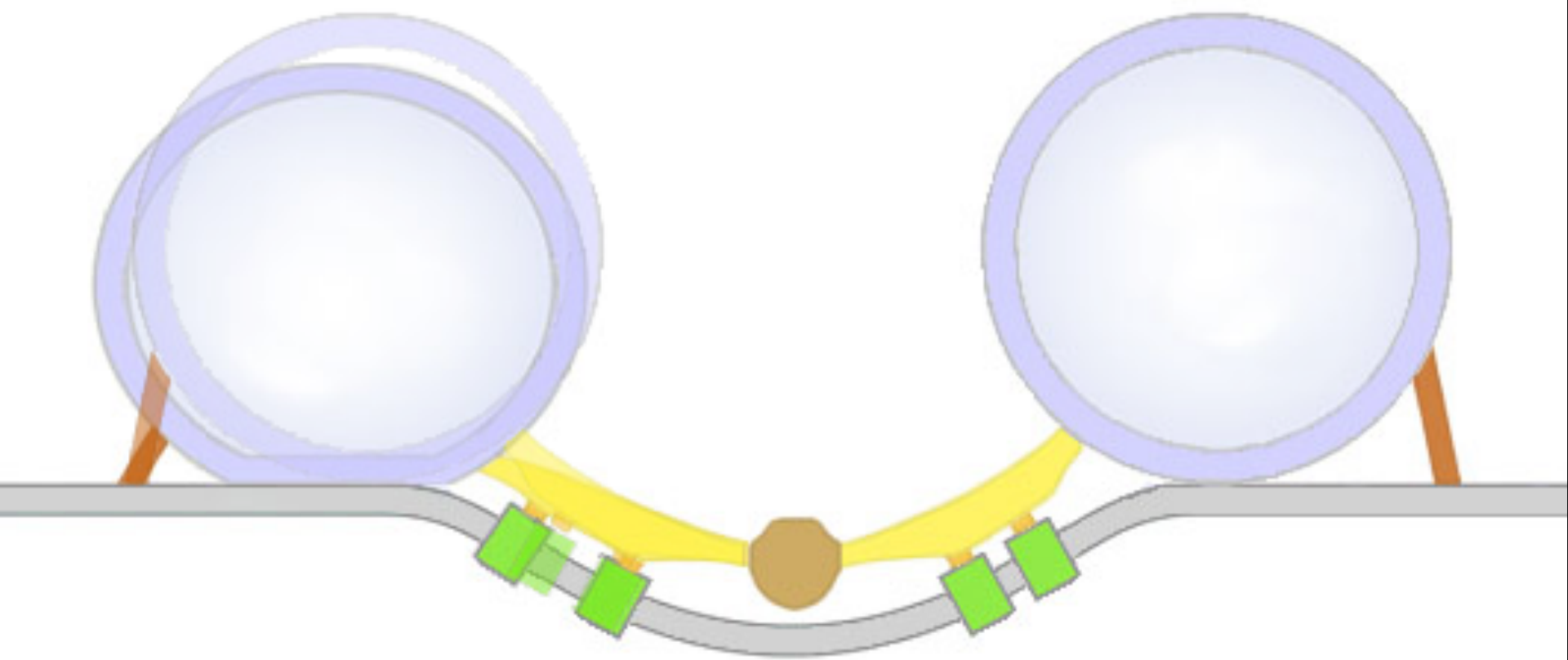


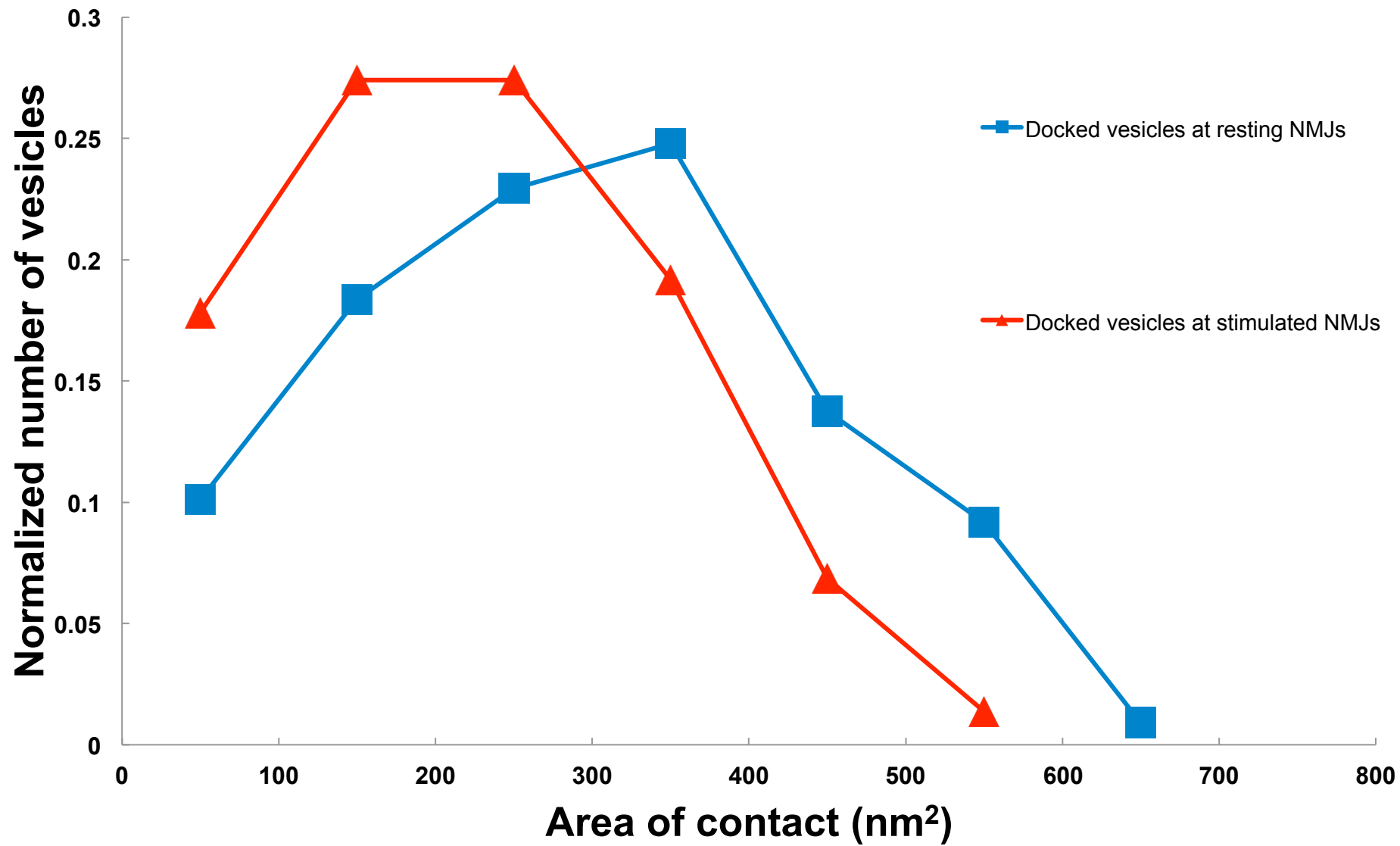
Average distance of pin-vesicle contact to the presynaptic membrane (nm)

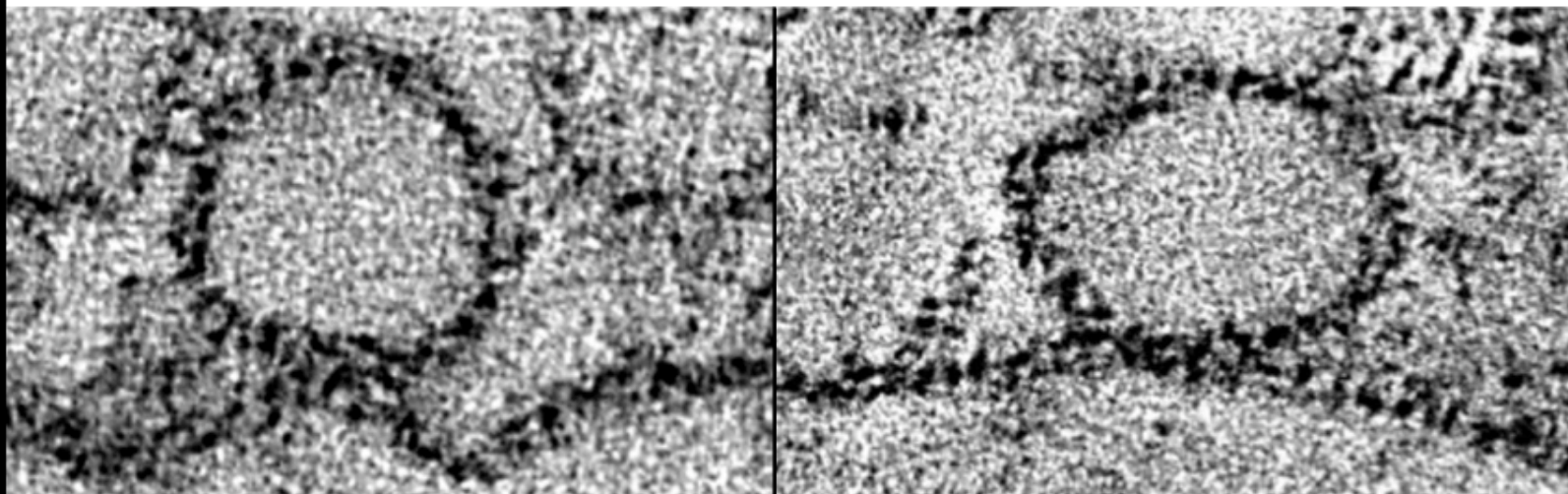
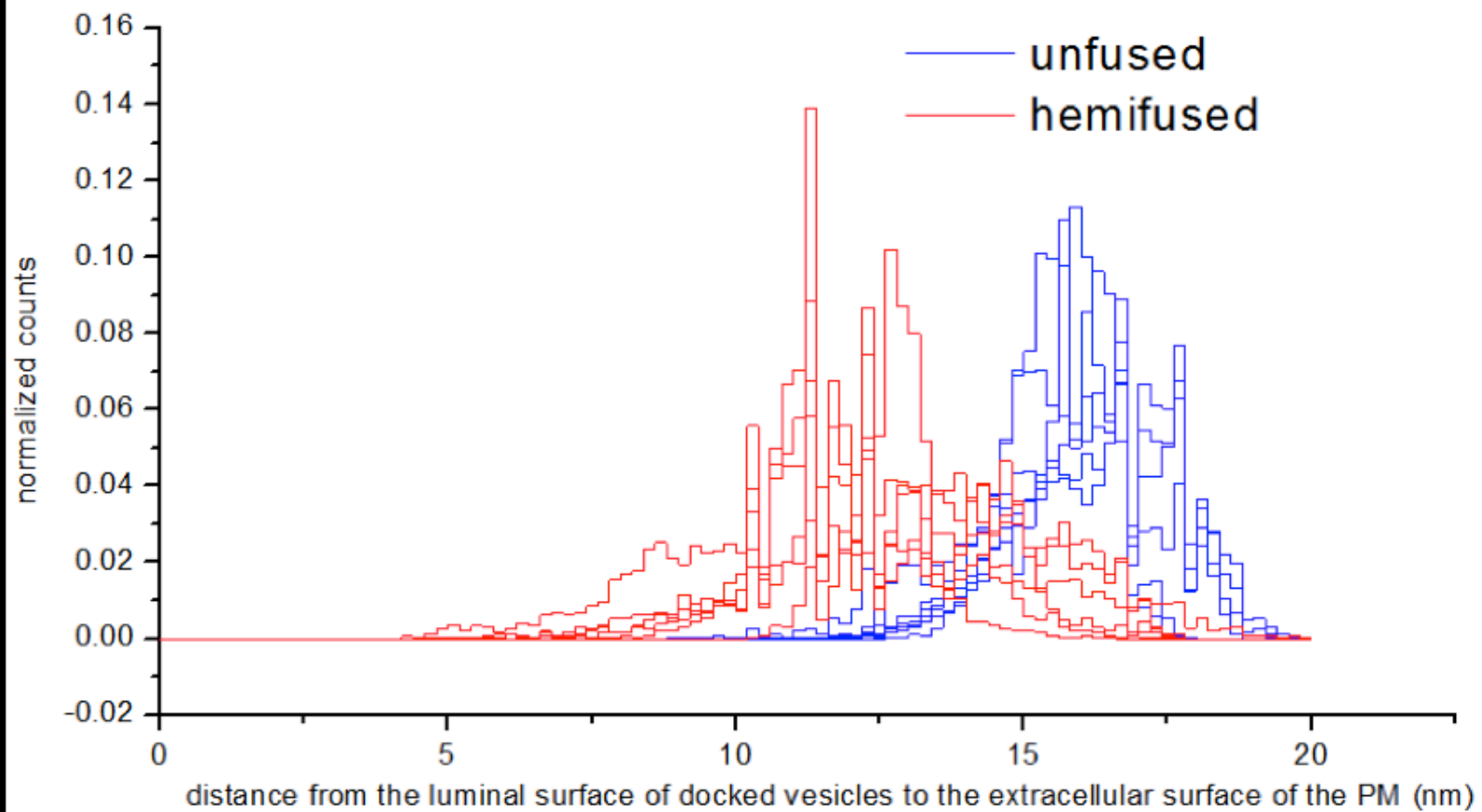


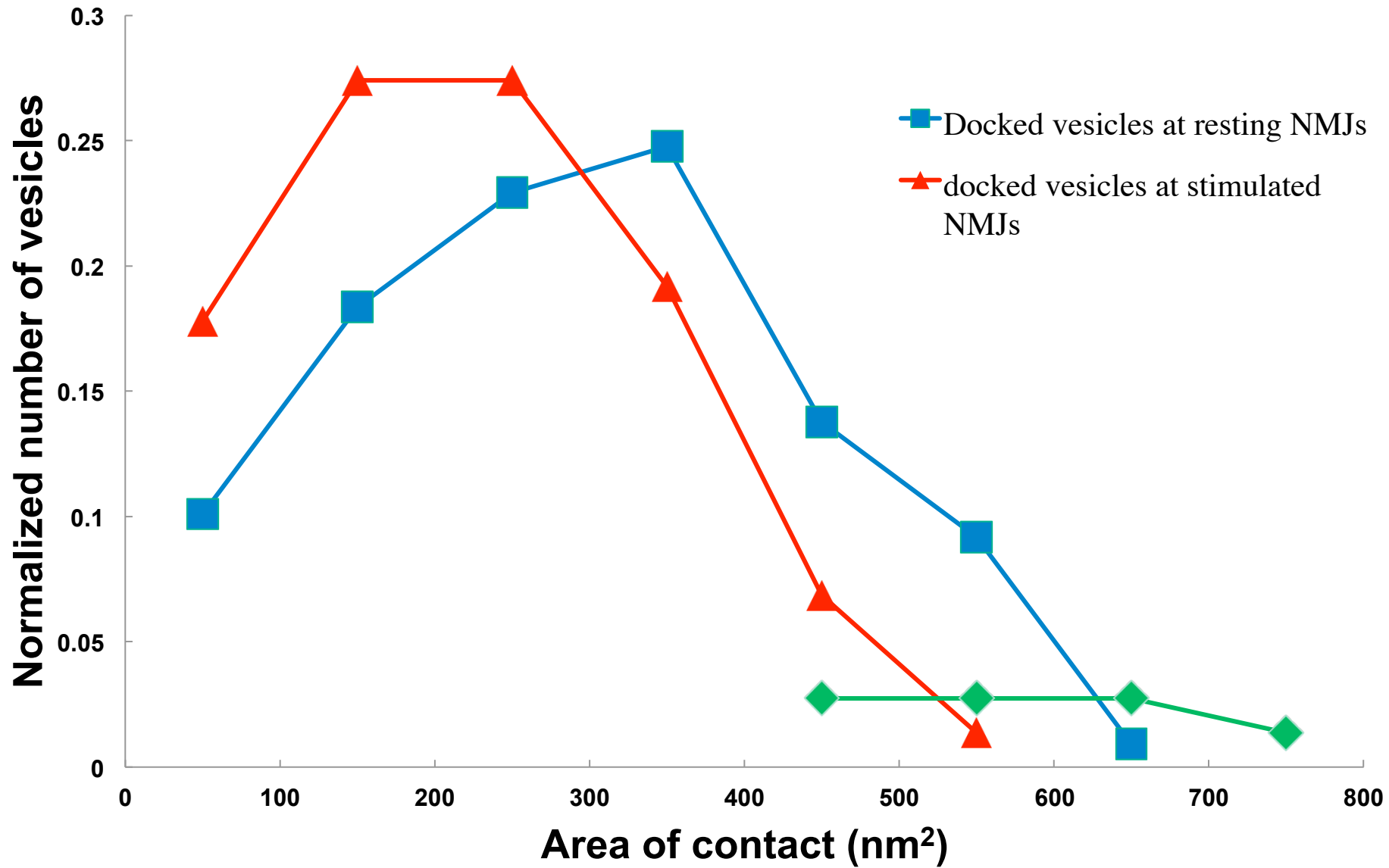


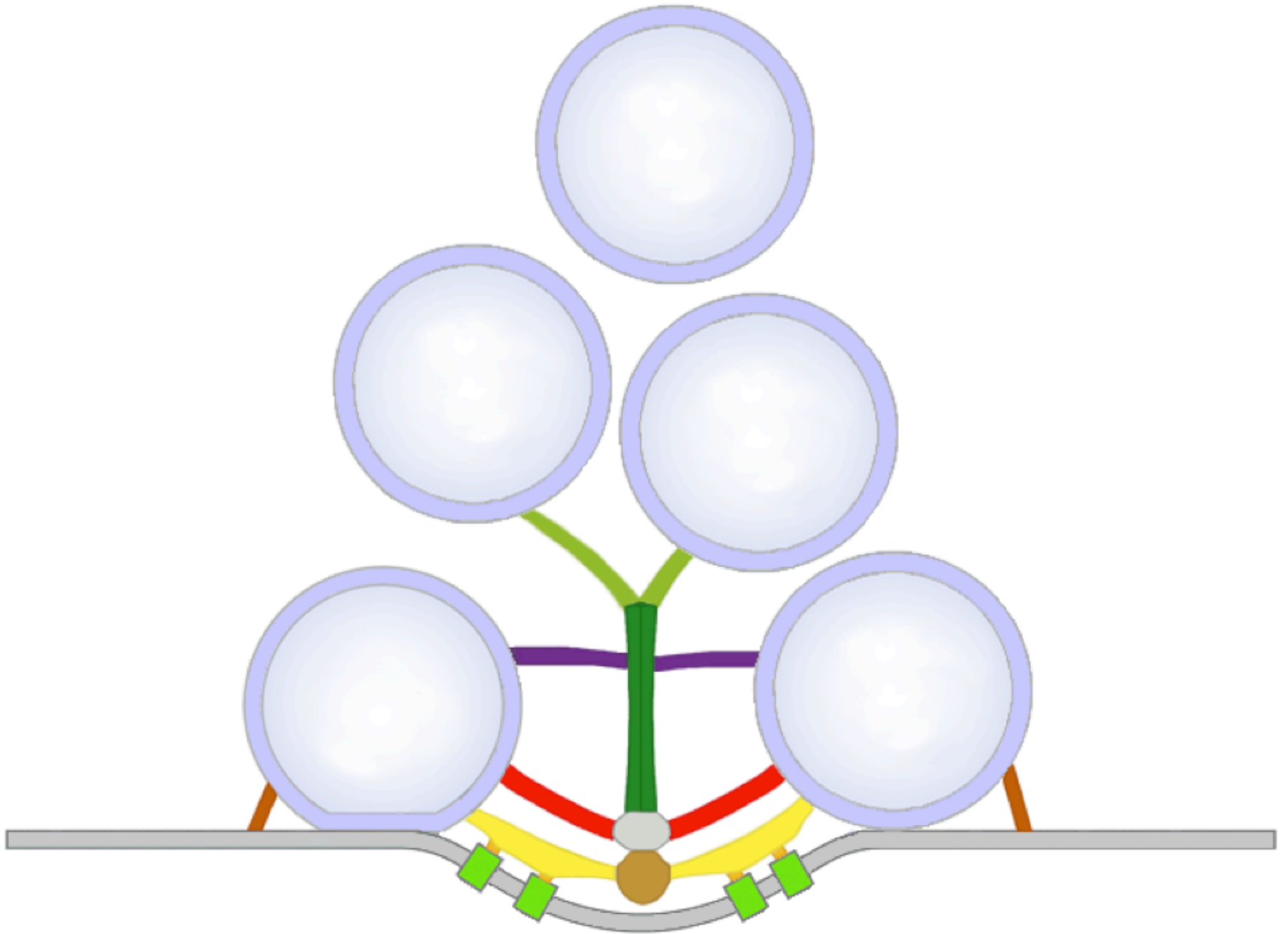


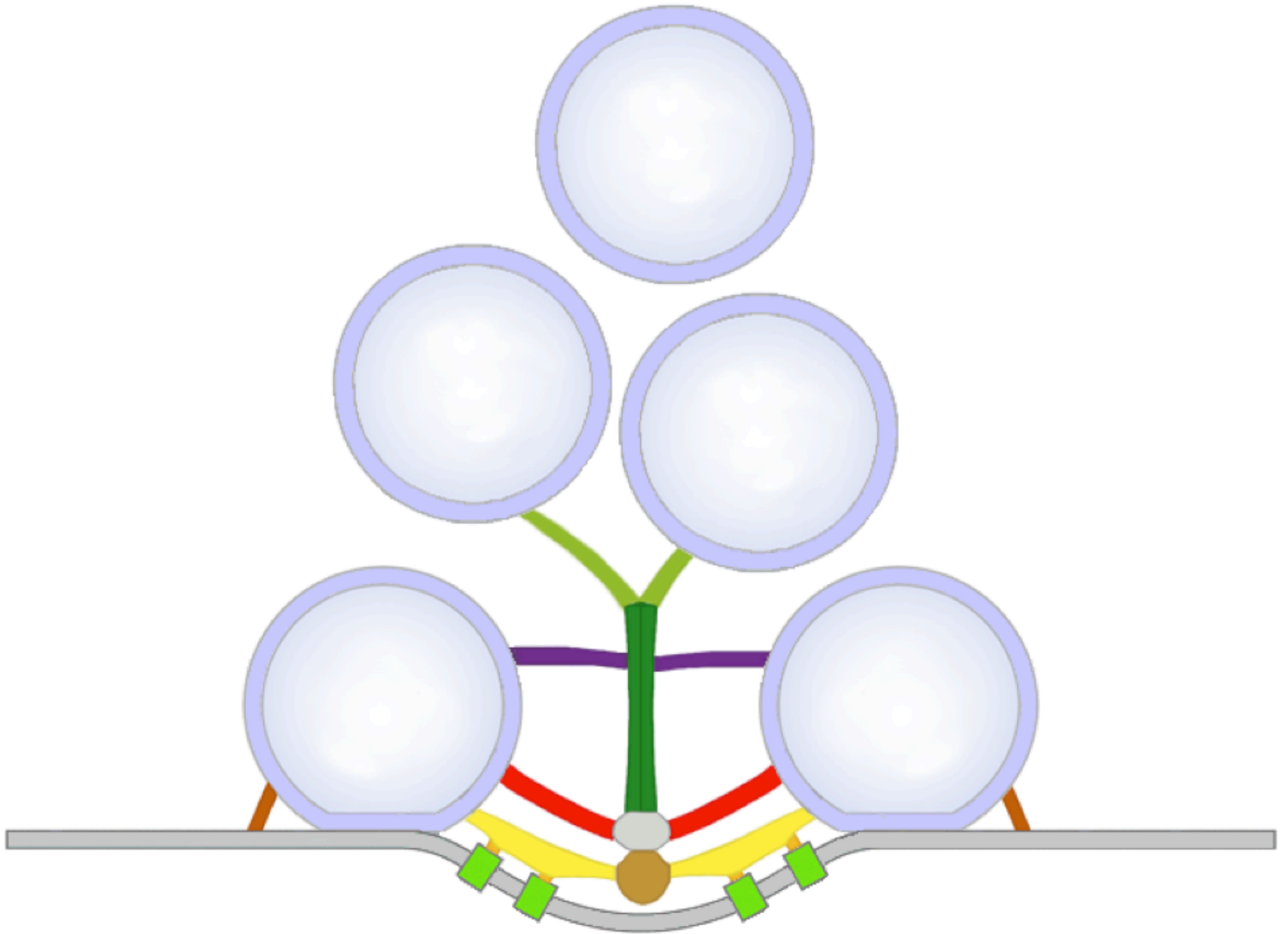




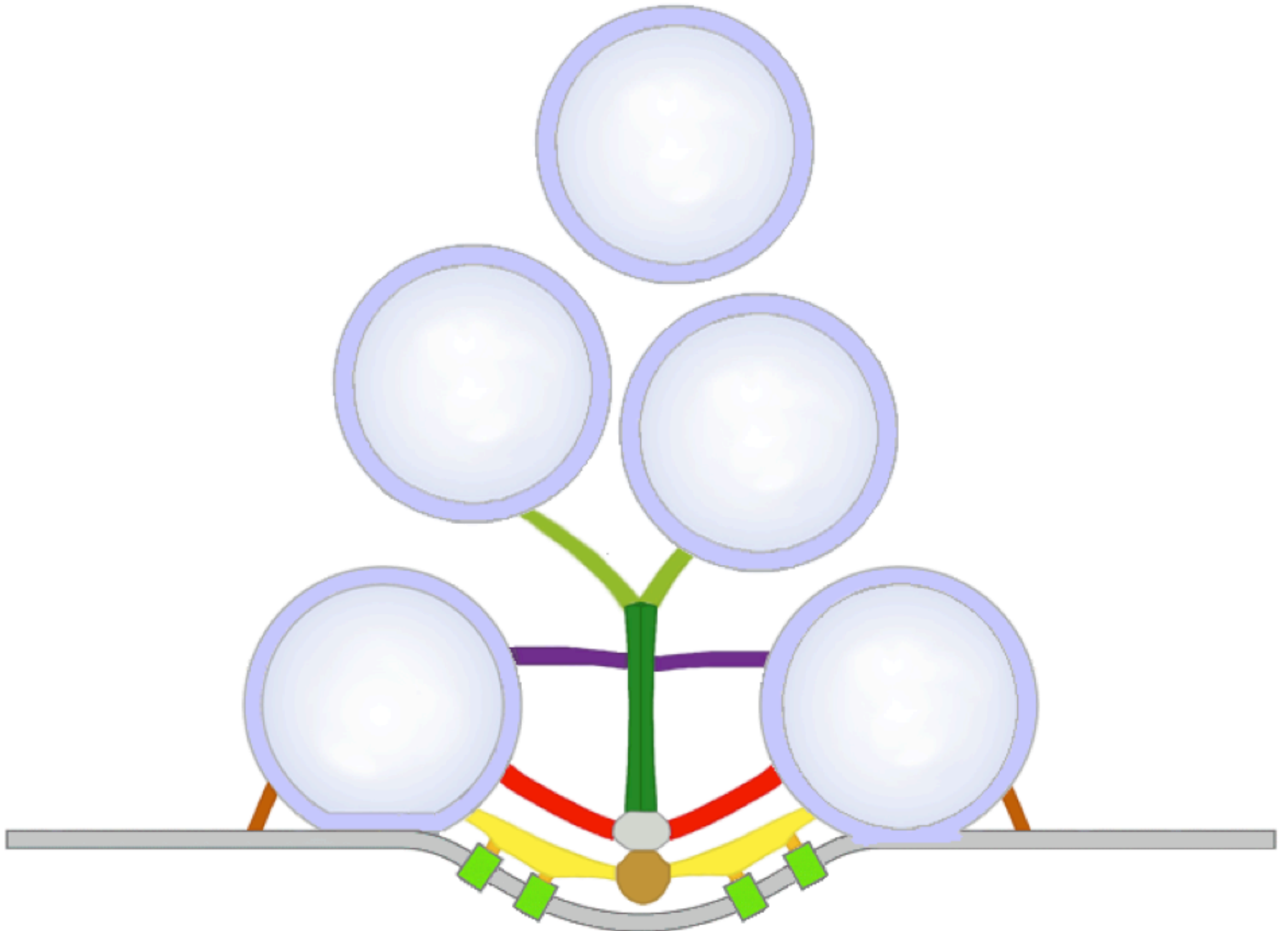


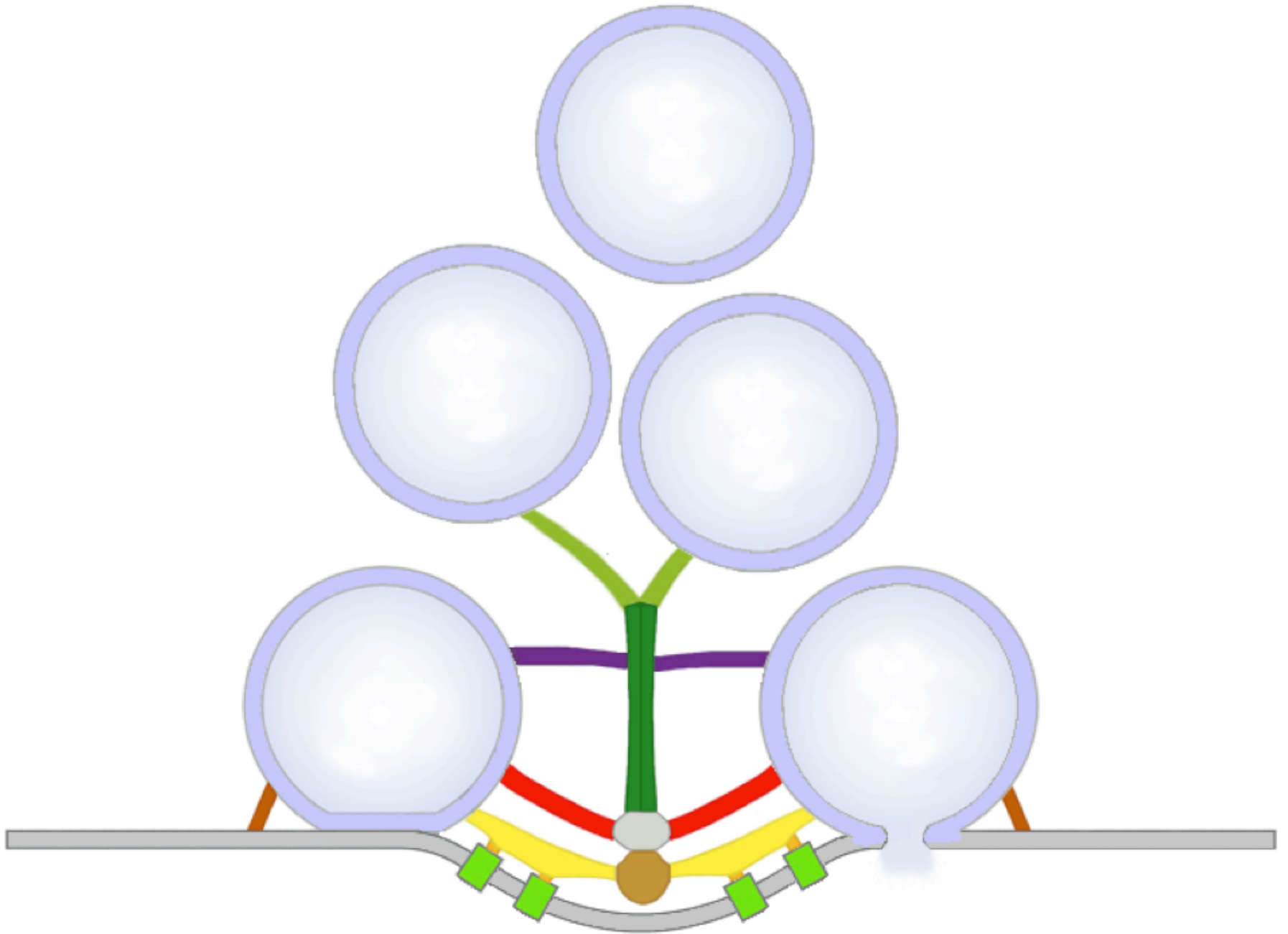


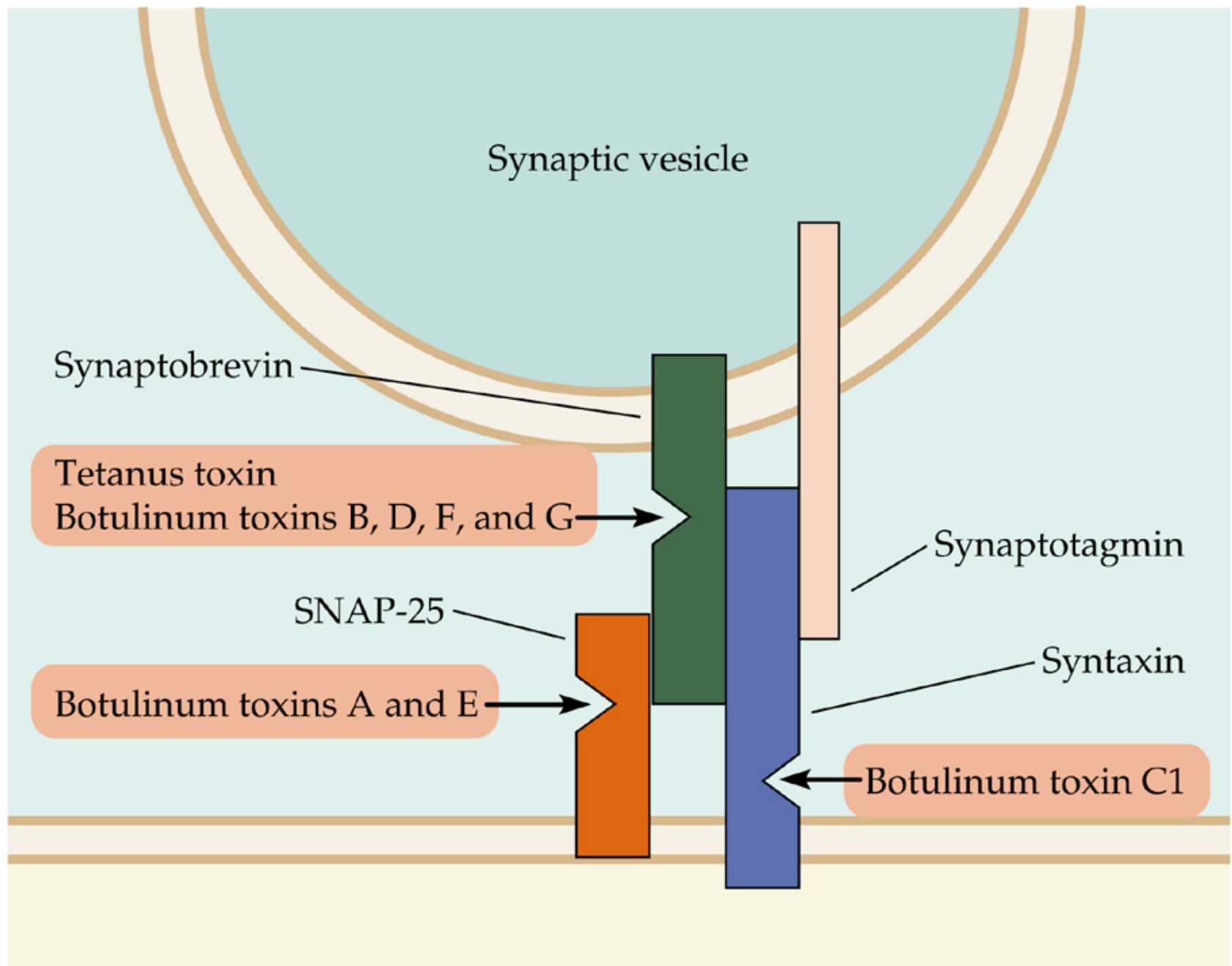


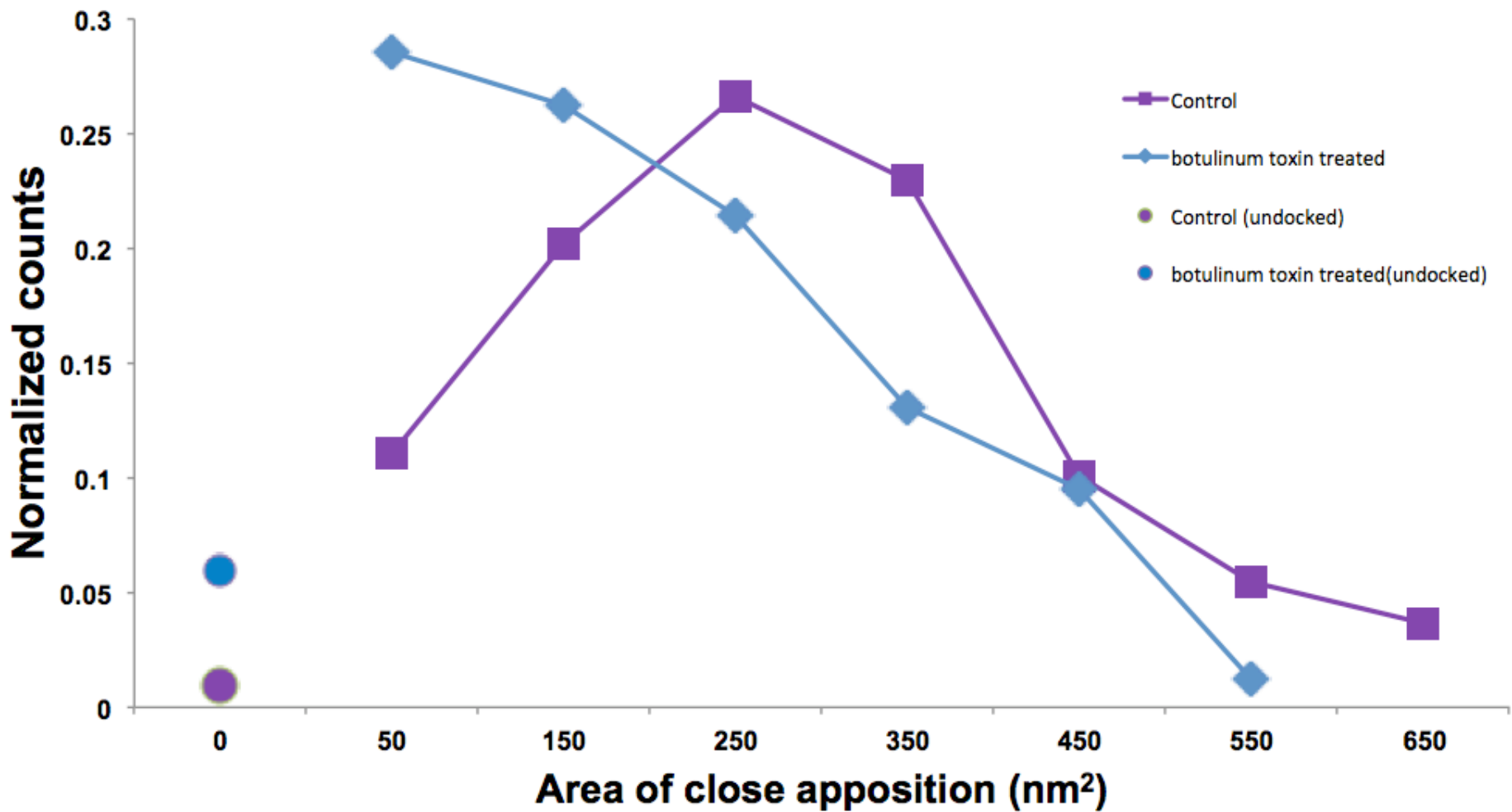






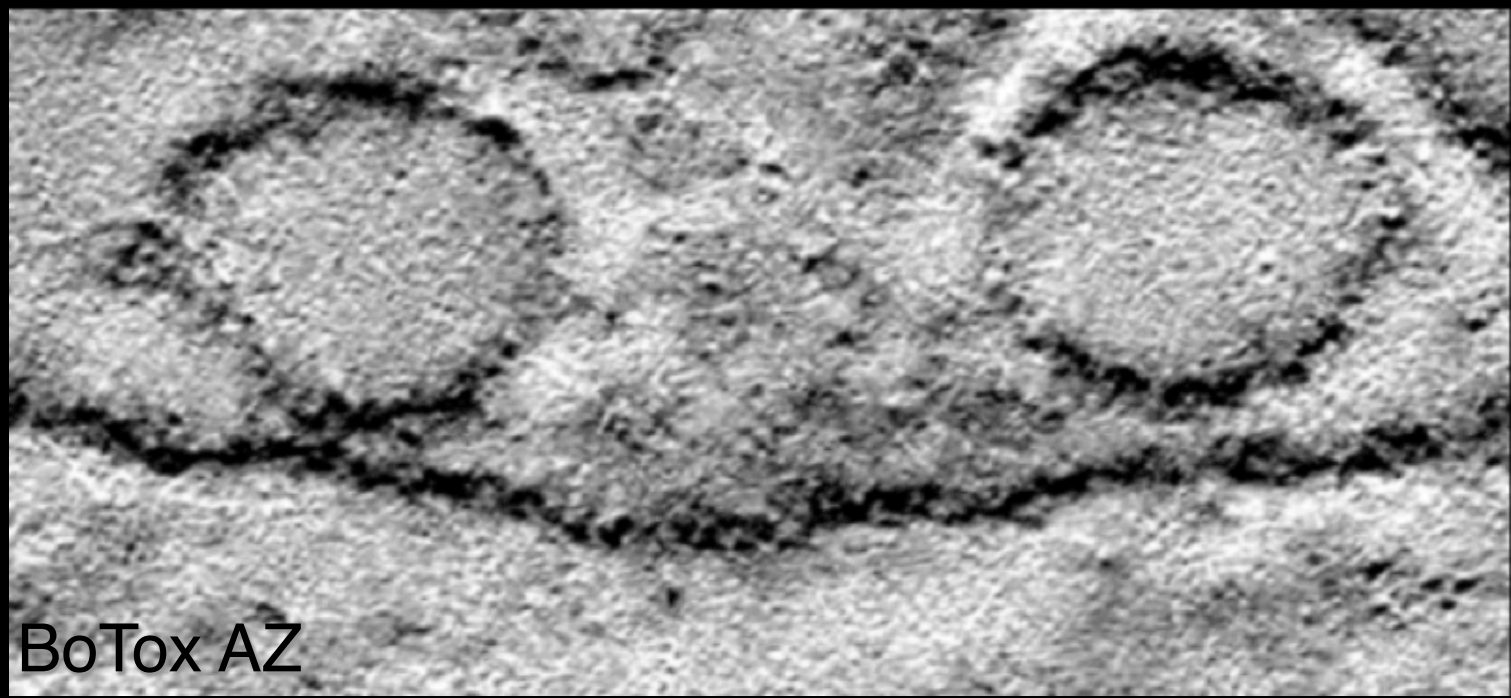








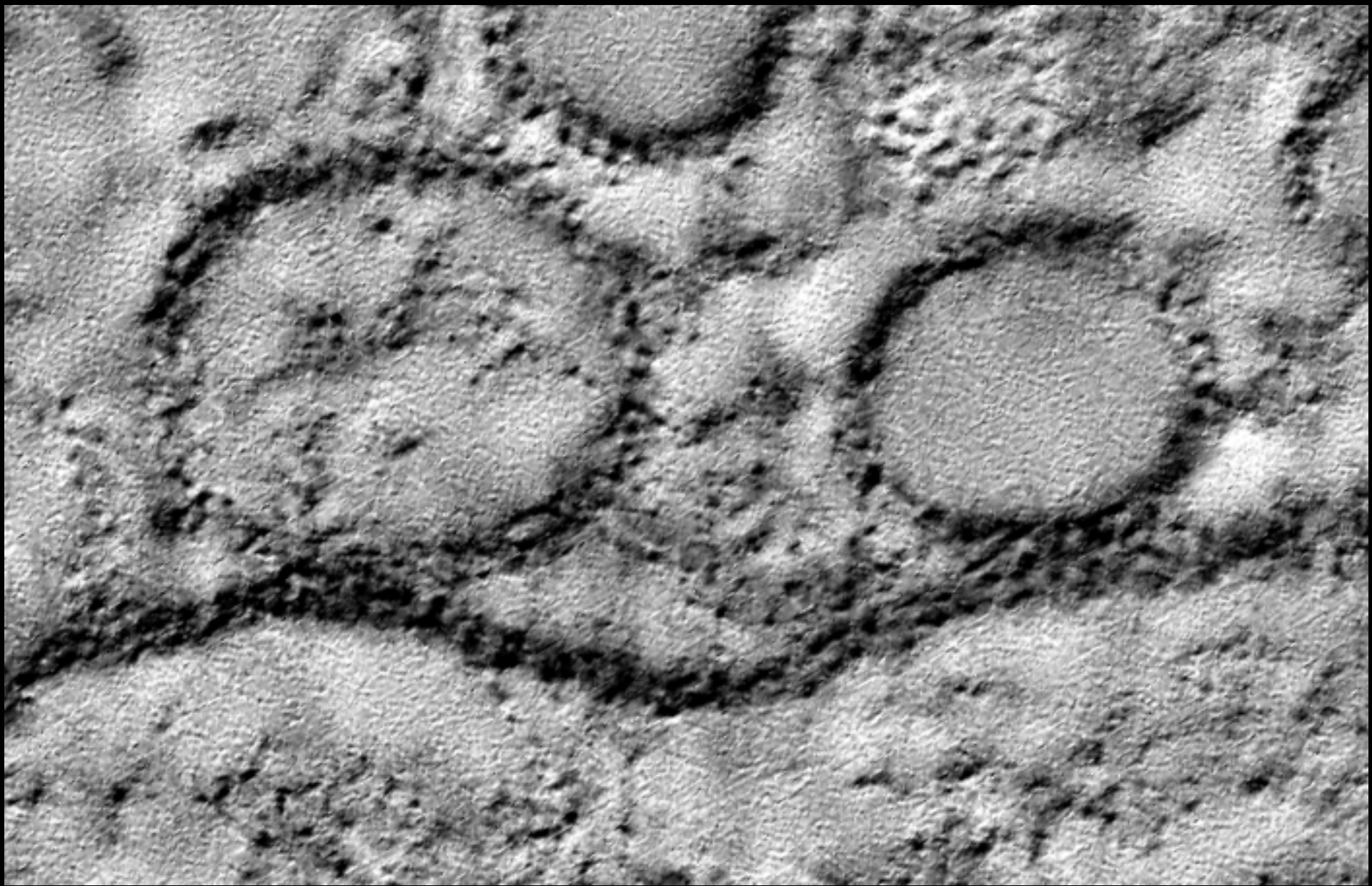
Normal AZ



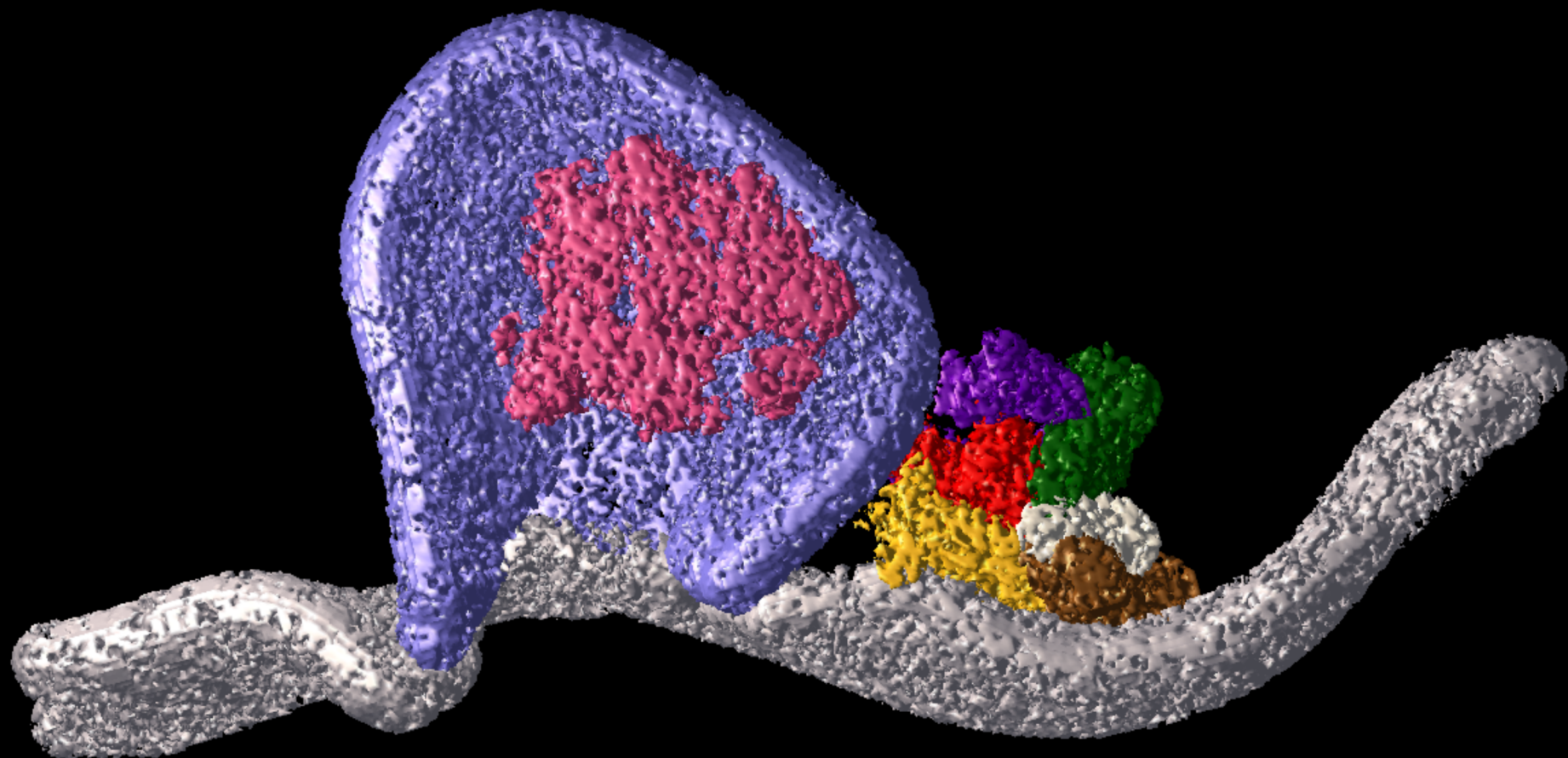
BoTox AZ











*Mark Harlow*  
*David Ress*  
*Sharuna Nagwaney*  
*Robert Marshall*  
*Jing Xu*  
*Jae Hoon Jung*  
*Joseph Szule*  
*Francisco F. De-Miguel*  
*David Yip*  
*Cornelia Stoschek*  
*Mira Raman*

