

Regional climate models as data source for hydrological modelling

Uldis Bethers, Jūlija Gaideliene, Juris Senņikovs

Laboratory for mathematical modelling of environmental and technological processes, Faculty of Physics and mathematics, University of Latvia

1. Background
2. Choice of Regional Climate Model
3. Hydrological modelling
4. Conclusions

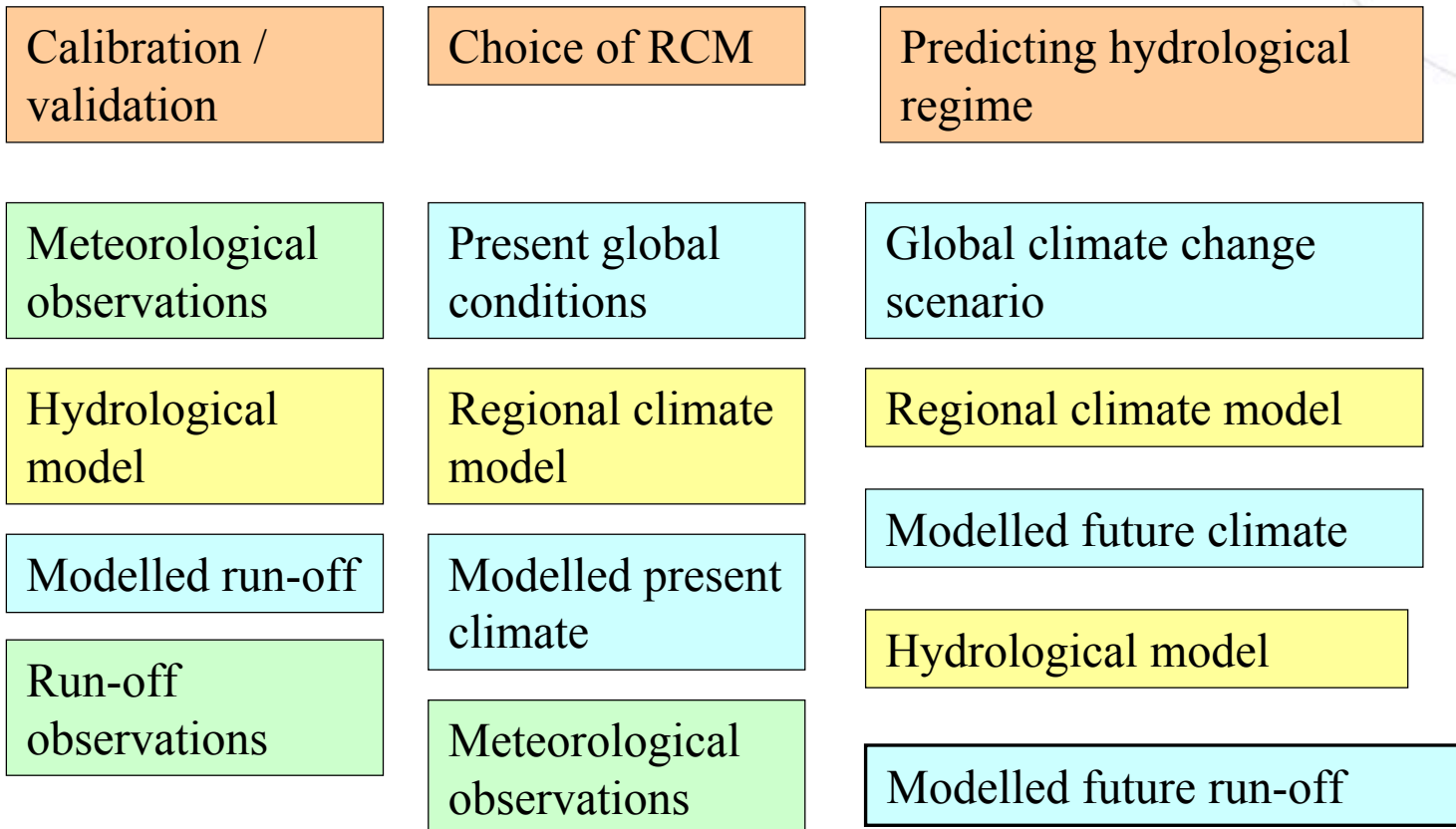


KALME

VALSTS PĒTĪJUMU PROGRAMMA
KLIMATA MAIŅAS IETEKME UZ LATVIJAS ŪDEŅU VIDĪ

1. Background

Goal: development of reliable information flows to predict the impact of climate change on the hydrological regime of the river basin



KALME

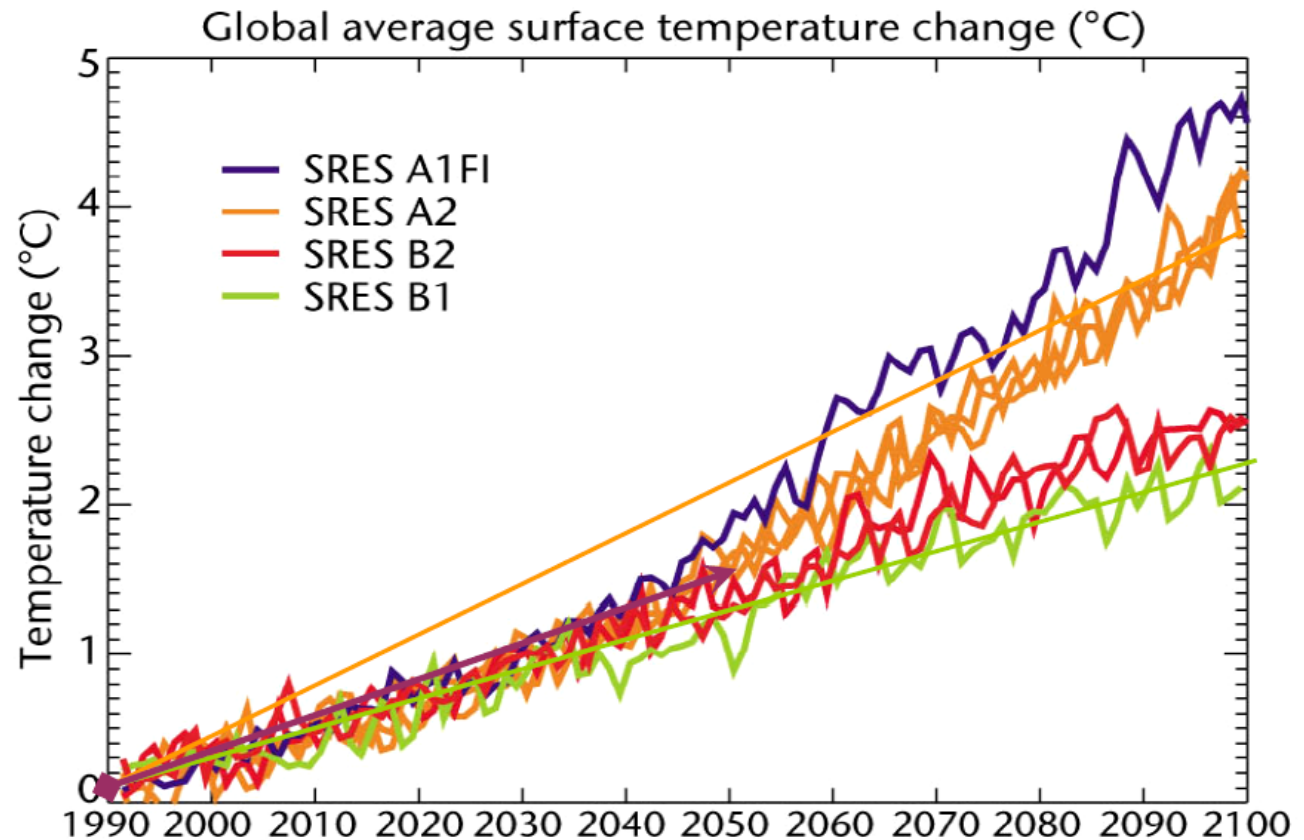
VALSTS PĒTĪJUMU PROGRAMMA
KLIMATA MAIŅAS IETEKME UZ LATVIJAS ŪDEŅU VIDĪ

2. Choice of RCM / SRES

Intergovernmental Panel on Climate Change (IPCC) by the World Meteorological Organization (WMO) and the United Nations Environment Programme (UNEP)

IPCC Special Report on Emissions Scenarios

A1, A2, B1
and B2
scenario
families



KALME

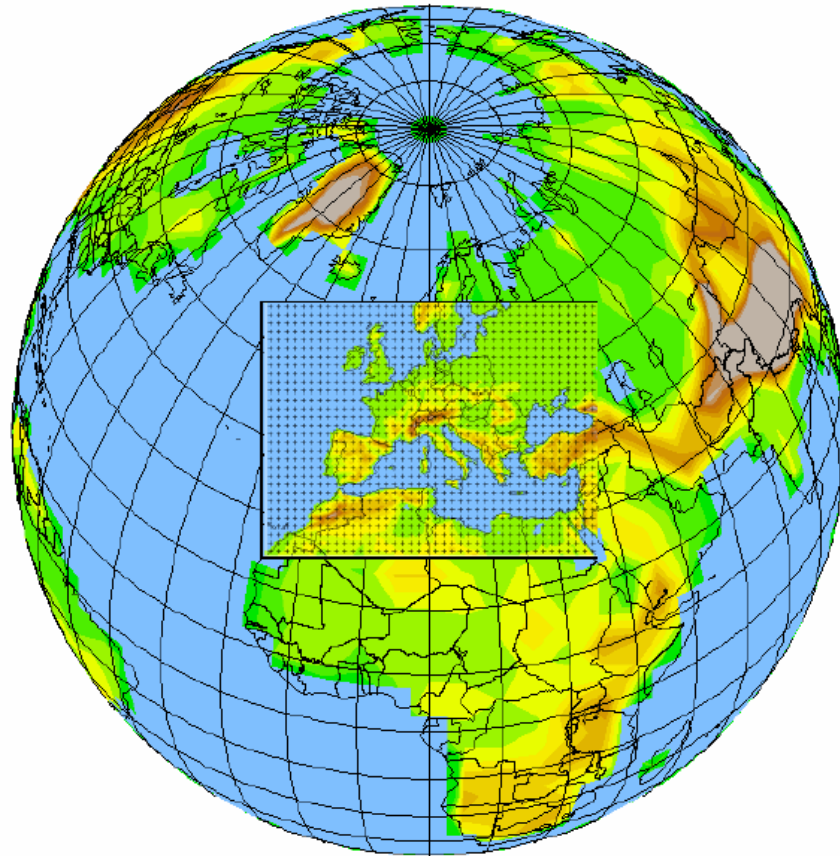
VALSTS PĒTĪJUMU PROGRAMMA
KLIMATA MAIŅAS IETEKME UZ LATVIJAS ŪDEŅU VIDĪ

2. Choice of RCM: RCM

Global
climate
change
scenario

Global climate
model

Regional climate
model



PRUDENCE is a European FP5 scientific project to quantify confidence and the uncertainties in predictions of future climate and its impacts, using an array of climate models.

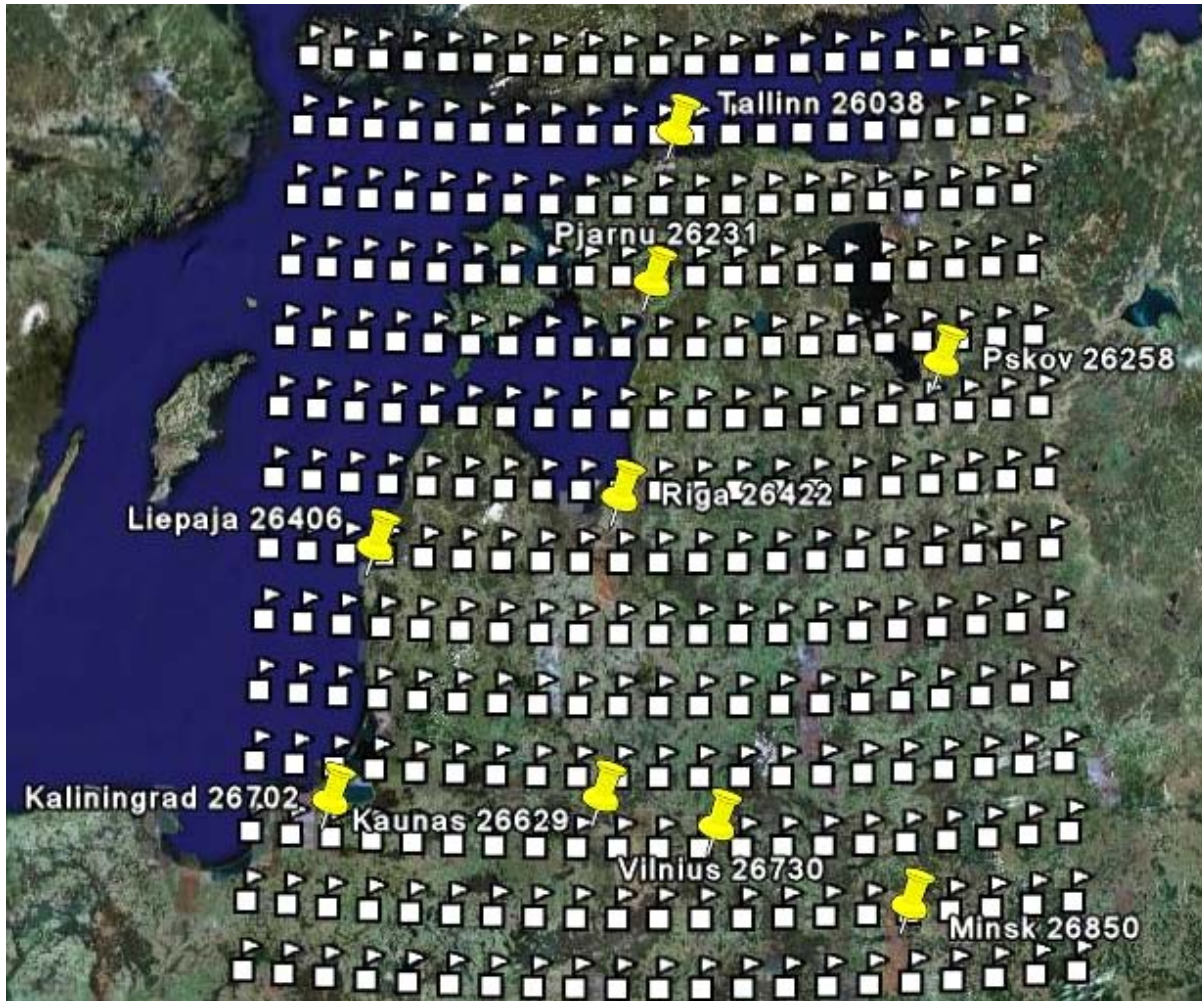
PRUDENCE will provide a series of high-resolution climate change scenarios for 2071-2100 for Europe



KALME

VALSTS PĒTĪJUMU PROGRAMMA
KLIMATA MAIŅAS IETEKME UZ LATVIJAS ŪDEŅU VIDĪ

2. Choice of RCM / models



21 model / forcing considered for control period 1961-1990:

CHRM HC_CTL,
CLM CTL,
CLM CTLsn,
HadRM3P adeha,
HadRM3P adehb,
HadRM3P adehc,
HIRHAM HC1,
HIRHAM HC2,
HIRHAM HC3,
HIRHAM ecctrl,
HIRHAM ECC,
HIRHAM Xtra hi res. F12,
HIRHAM high res. F25, HIRHAM
HADCN, PROMES control,
RACMO HC1,
RCAO HCCTL,
RCAO hi res. HCCTL_22,
RCAO MPICTL,
RegCM ref,
REMO 3003



KALME

VALSTS PĒTĪJUMU PROGRAMMA
KLIMATA MAIŅAS IETEKME UZ LATVIJAS ŪDEŅU VIDĪ

2. Choice of RCM / approach

- 21 model (GCM) is considered for control period 1961-1990.
- 9 observations locations are considered for time period 1961-1990 (observation by USSR Hydrometeorological Agency)
- Monthly average precipitation, monthly average temperature, standard deviation of monthly precipitation and standard deviation of monthly temperature is calculated for each observation location from the 1 observation data series and 21 model data series:
(4 parameters x 12 months x 9 locations x (1 obs + 21 mod))
- 432 deviations between the model results and observations are calculated for each of 21 models
- Deviations are normalised to give equal weight for each of 4 parameters
- Penalty function is constructed from normalised deviations to quantify the difference between the model climate and the observed climate

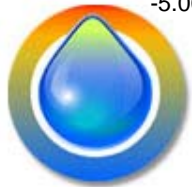
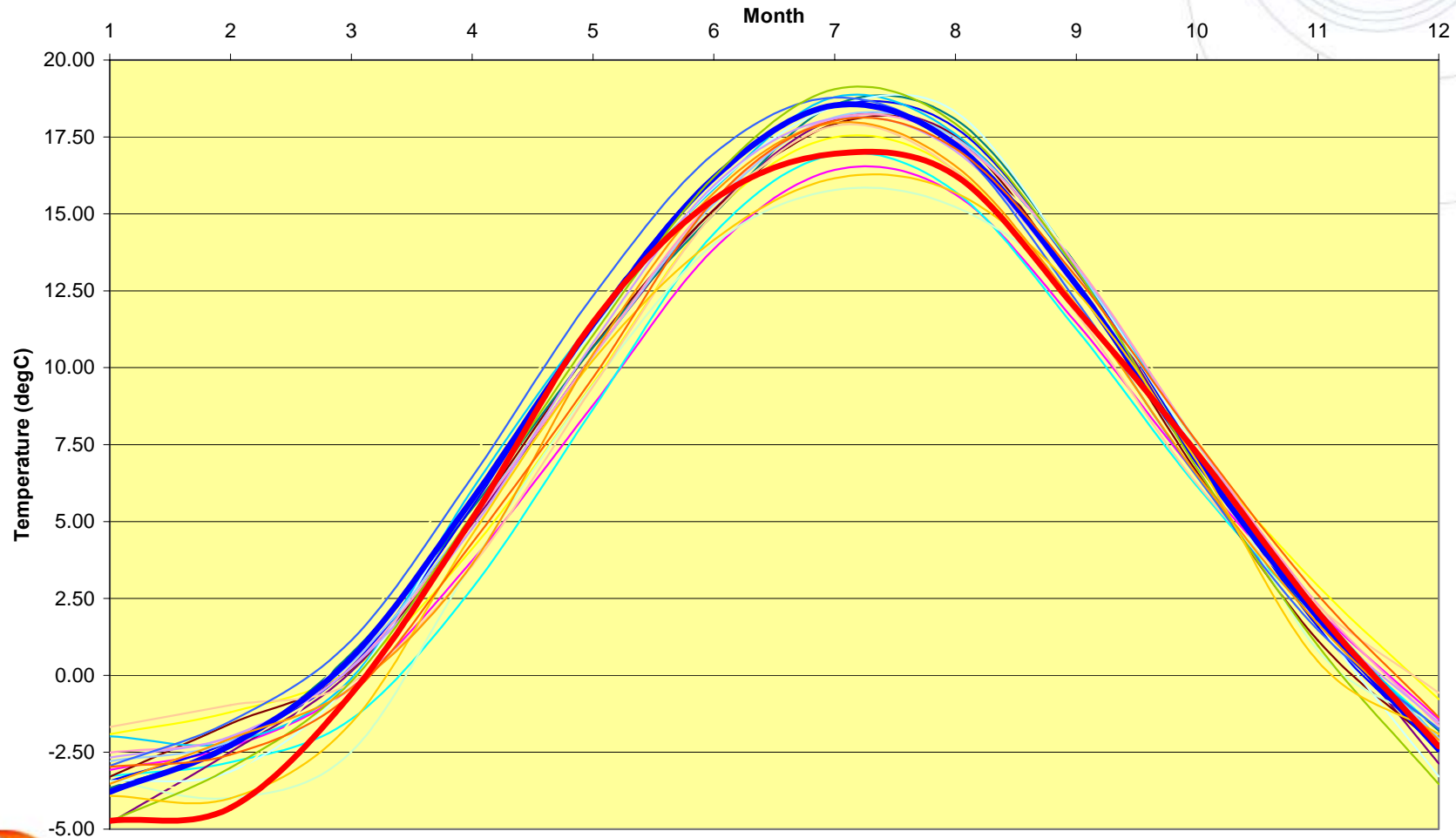


KALME

VALSTS PĒTĪJUMU PROGRAMMA
KLIMATA MAIŅAS IETEKME UZ LATVIJAS ŪDEŅU VIDĪ

2. Choice of RCM / temperature@Riga

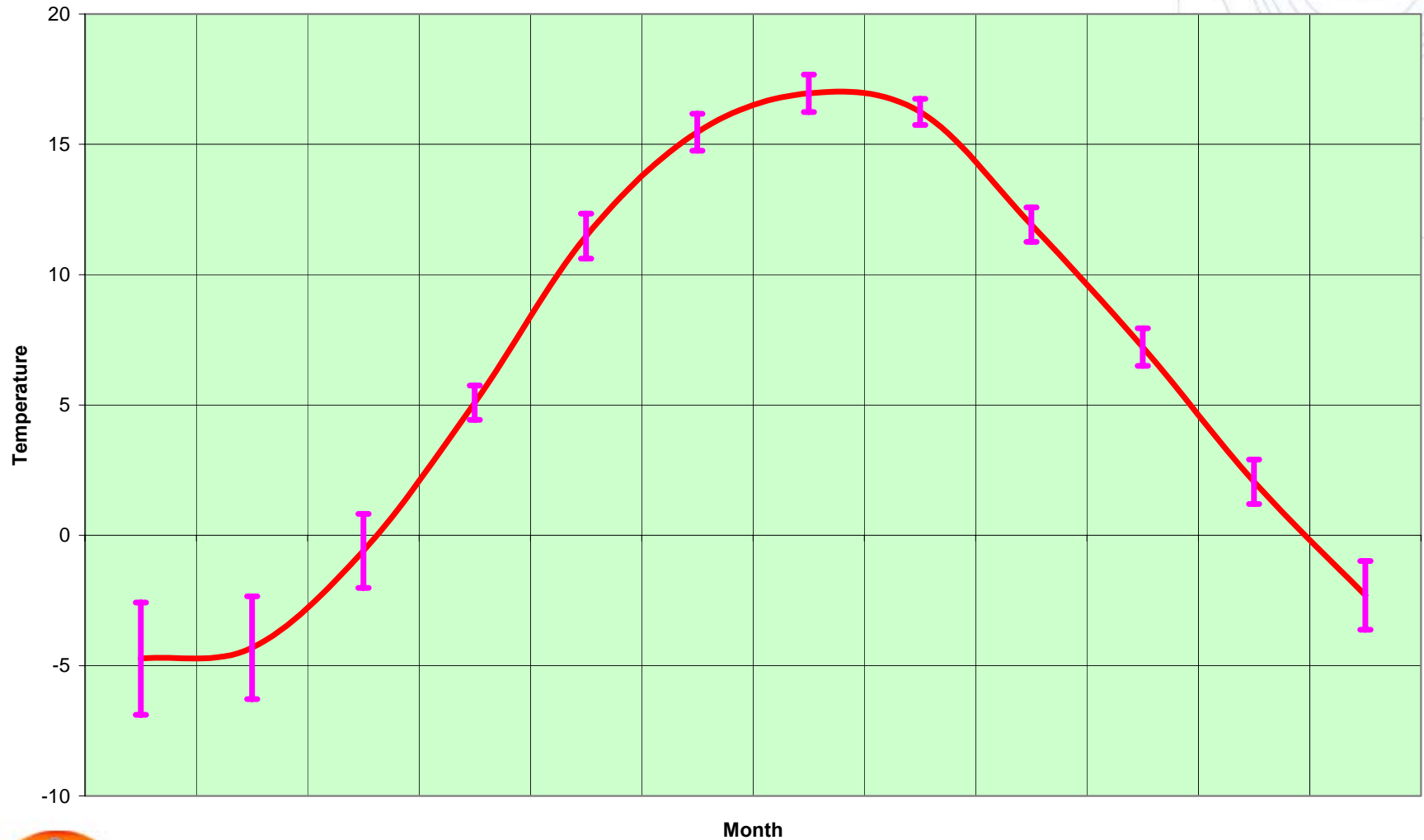
Monthly temperature (OBS = 6.2 degC, MOD = 6.9 degC)



KALME

VALSTS PĒTĪJUMU PROGRAMMA
KLIMATA MAIŅAS IETEKME UZ LATVIJAS ŪDEŅU VIDĪ

2. Choice of RCM / temperature STD @ Riga

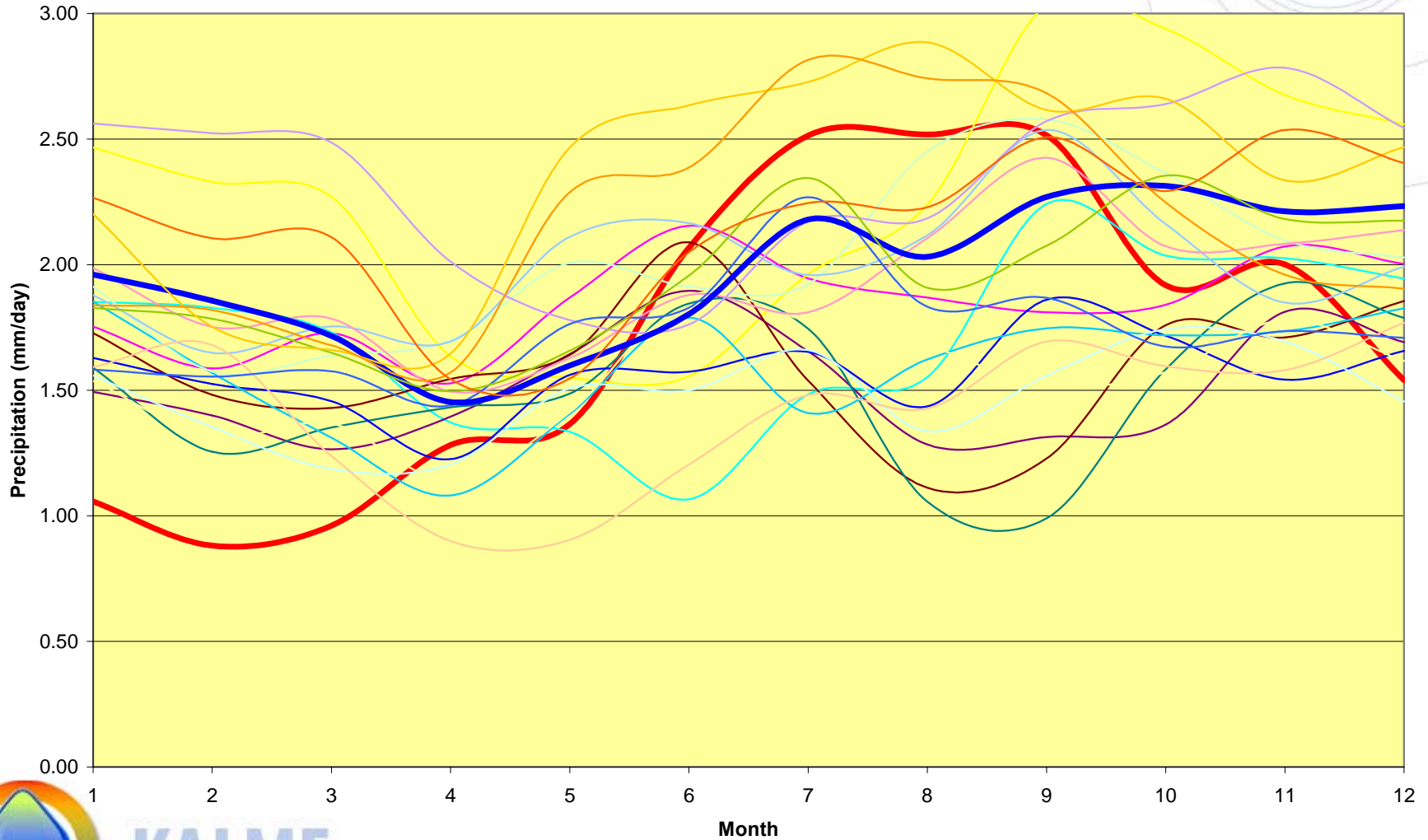


KALME

VALSTS PĒTĪJUMU PROGRAMMA
KLIMATA MAIŅAS IETEKME UZ LATVIJAS ŪDEŅU VIDĪ

2. Choice of RCM / precipitation@Riga

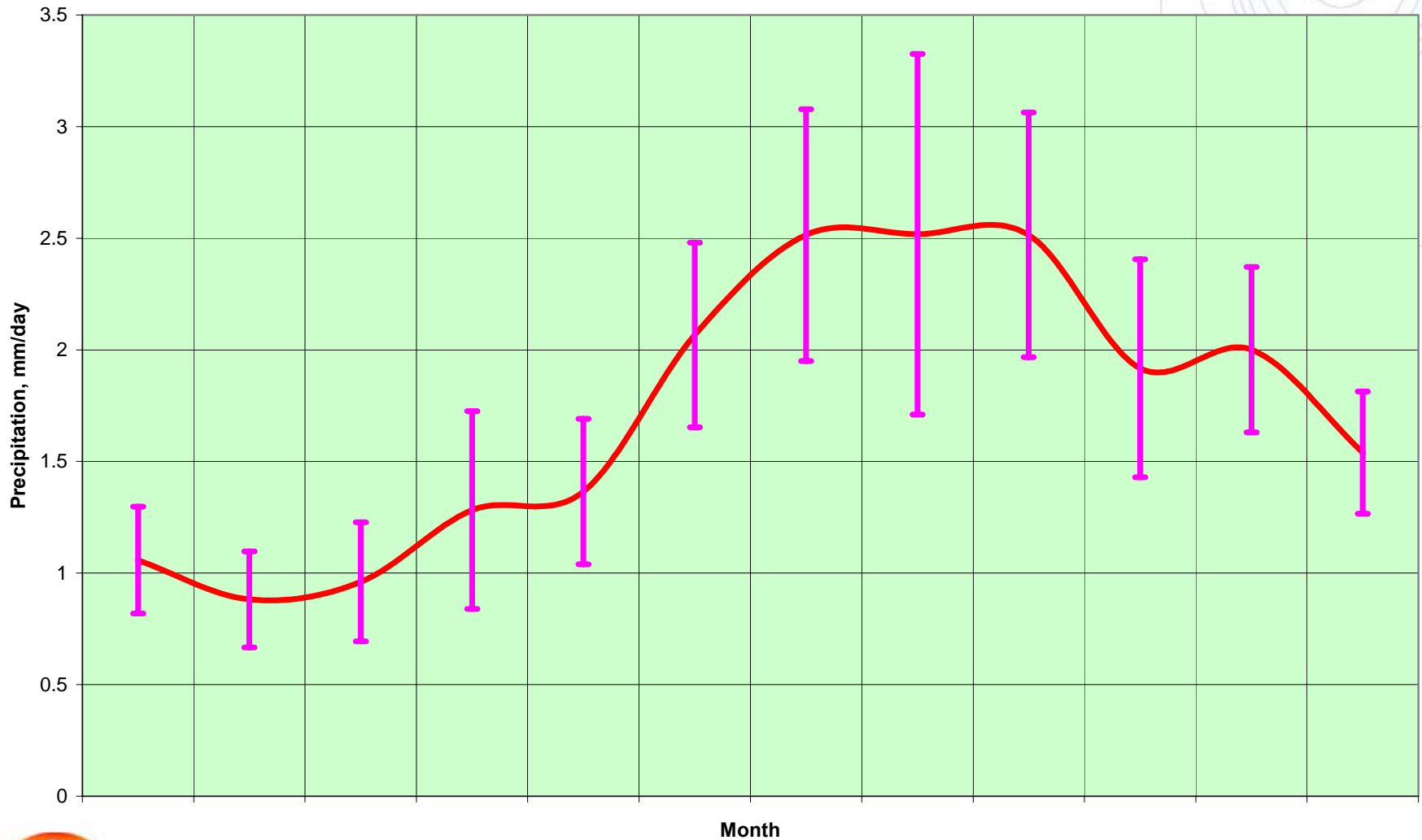
Monthly precipitation (OBS = 620 mm, MOD = 708 mm i.e. +14%)



KALME

VALSTS PĒTĪJUMU PROGRAMMA
KLIMATA MAIŅAS IETEKME UZ LATVIJAS ŪDEŅU VIDĪ

2. Choice of RCM / precipitation STD @ Riga

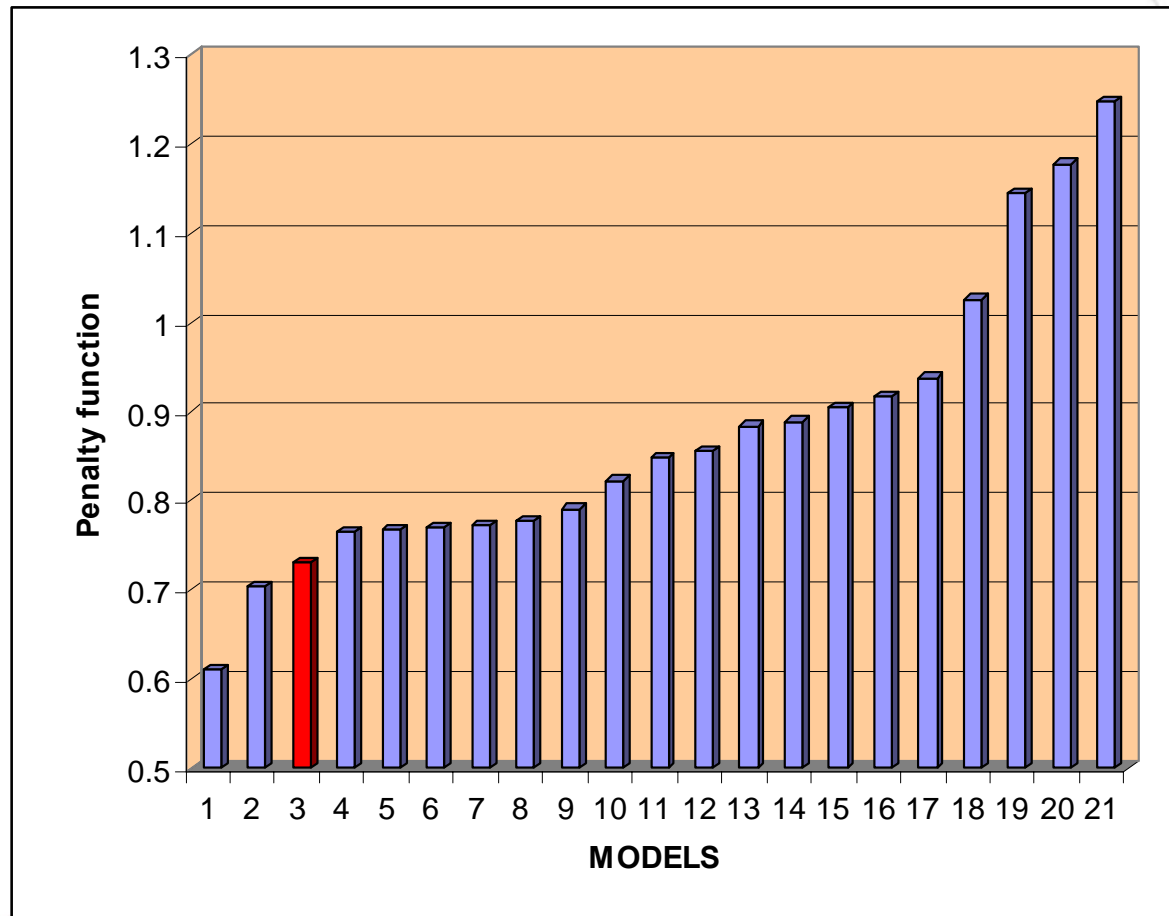


KALME

VALSTS PĒTĪJUMU PROGRAMMA
KLIMATA MAIŅAS IETEKME UZ LATVIJAS ŪDEŅU VIDĪ

2. Choice of RCM / summary

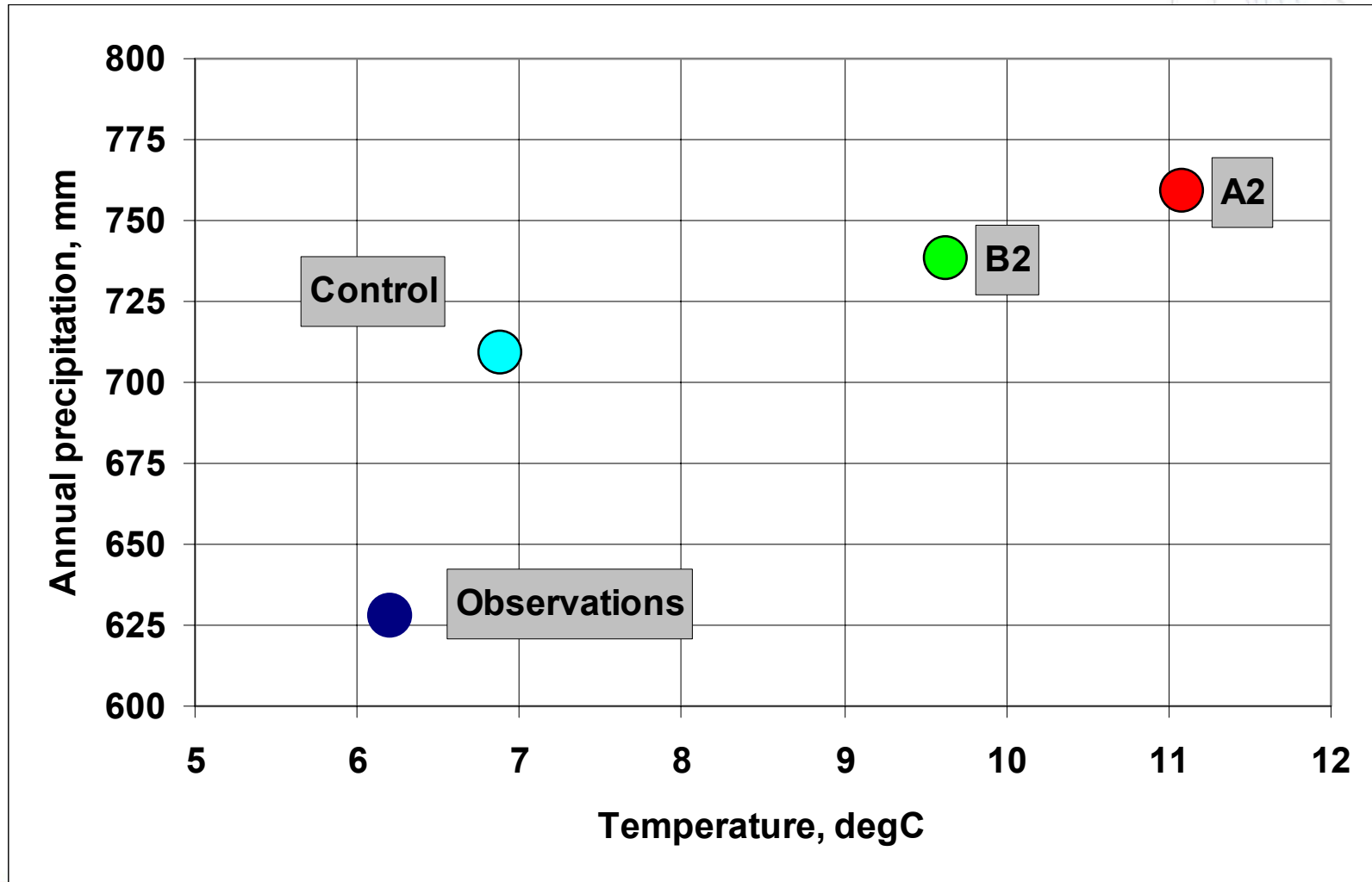
SMHI (SE) RCAO HadAM3H (HCCTL) model used further



KALME

VALSTS PĒTĪJUMU PROGRAMMA
KLIMATA MAIŅAS IETEKME UZ LATVIJAS ŪDEŅU VIDĪ

2. Choice of RCM / summary

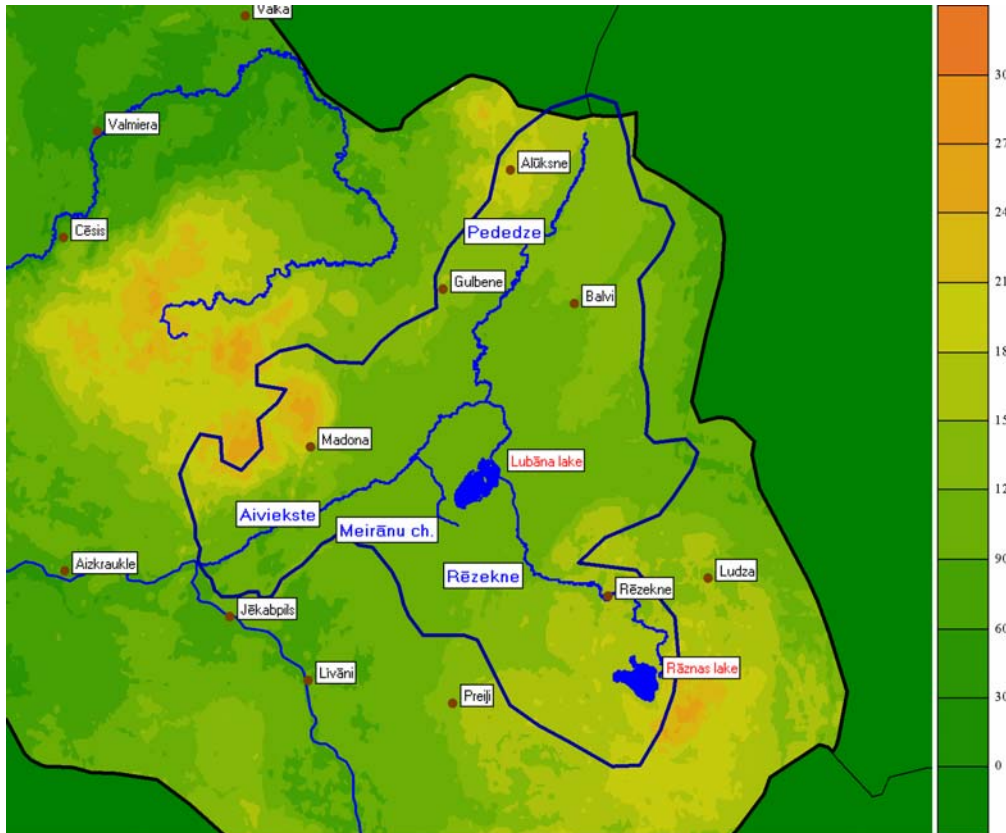


KALME

VALSTS PĒTĪJUMU PROGRAMMA
KLIMATA MAIŅAS IETEKME UZ LATVIJAS ŪDEŅU VIDĪ

3. Hydrological modelling: model & domain

In-house model of hydrological processes FiBasin.
Aiviekste basin in Latvia.



Calibration for
1976-1979

Hydrometric
observations
at Zīverts
(2000)

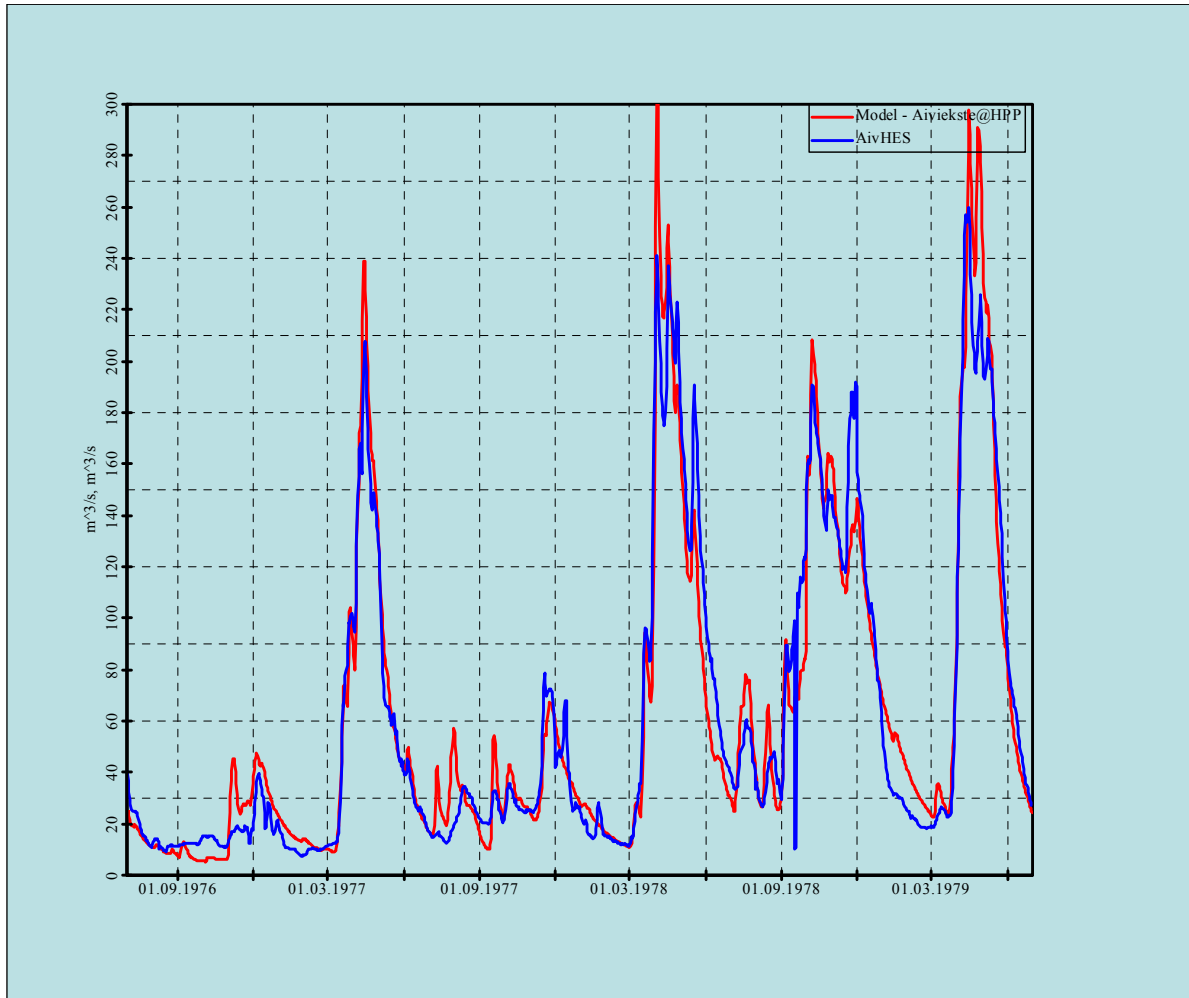
Meteorological
observations
at LEGMA



KALME

VALSTS PĒTĪJUMU PROGRAMMA
KLIMATA MAIŅAS IETEKME UZ LATVIJAS ŪDEŅU VIDĪ

3. Hydrological modelling: calibration



Comparison of
observed Q
/ modelled
Q (forcing
by
observed T,
p)

3 years, starting
in June

Average runoff
OBS 61.6 m³/s
MOD 62.5 m³/s



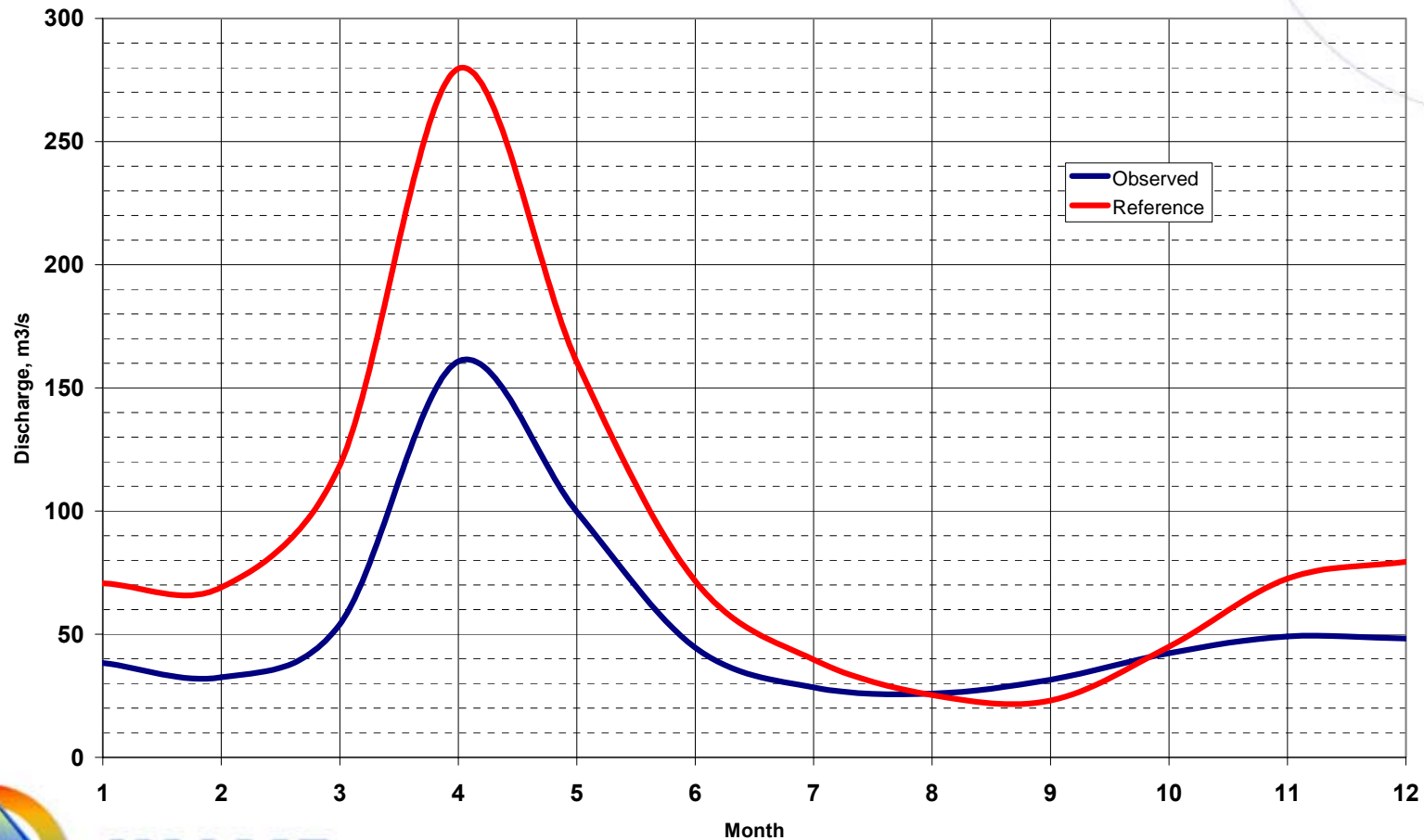
KALME

VALSTS PĒTĪJUMU PROGRAMMA
KLIMATA MAIŅAS IETEKME UZ LATVIJAS ŪDEŅU VIDĪ

3. Hydrological modelling: control period

Comparison of observed Q / modelled Q (RCM forcing) 1961-1990

Average runoff: OBS 54.6 m³/s MOD 88.1 m³/s (+61% !!!)



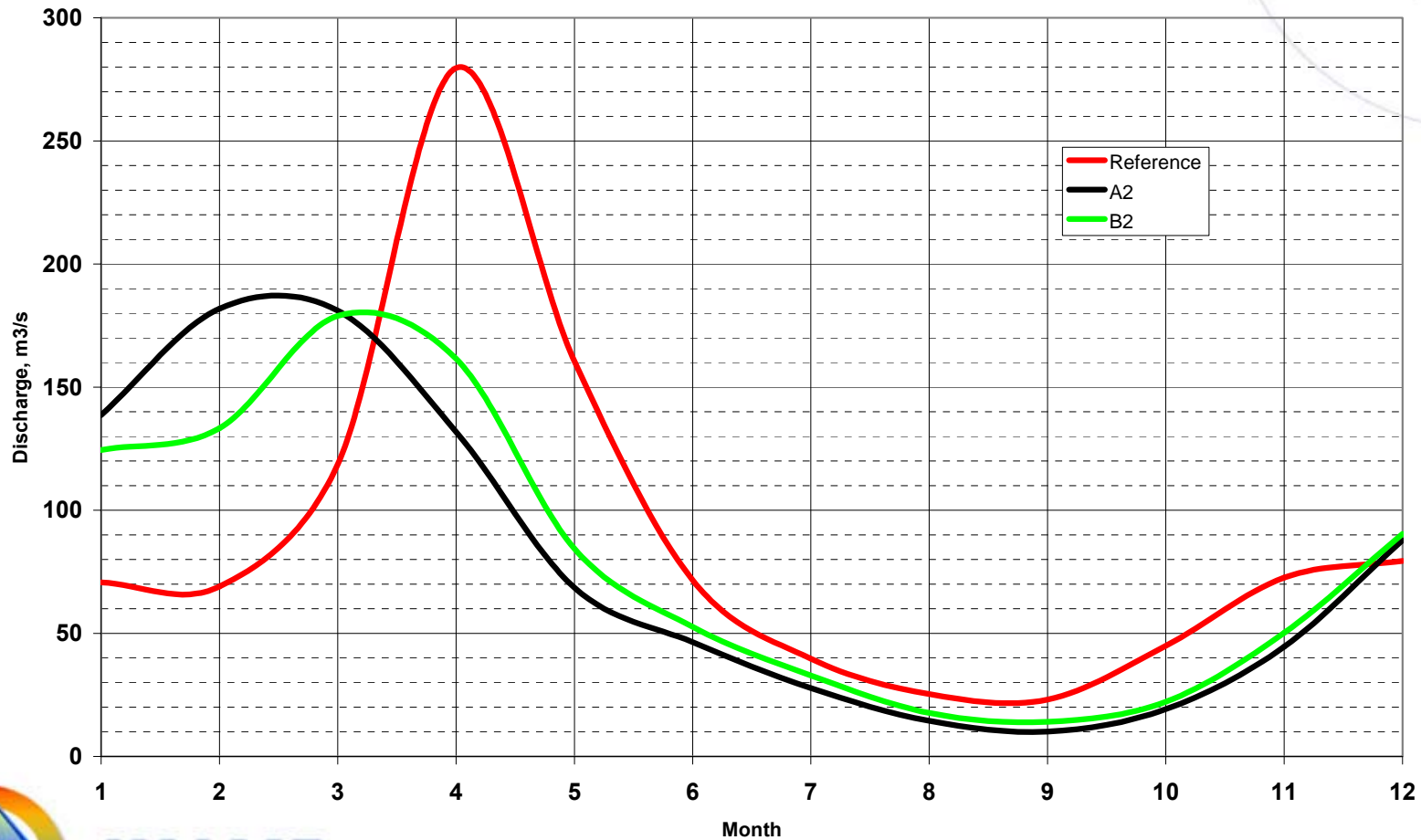
KALME

VALSTS PĒTĪJUMU PROGRAMMA
KLIMATA MAIŅAS IETEKME UZ LATVIJAS ŪDEŅU VIDĪ

3. Hydrological modelling: scenarios

Modelled Q. Forcing by RCM data (T, p).

Comparison of control period (1961-90) and scenarios A2, B2 (2071-2100)



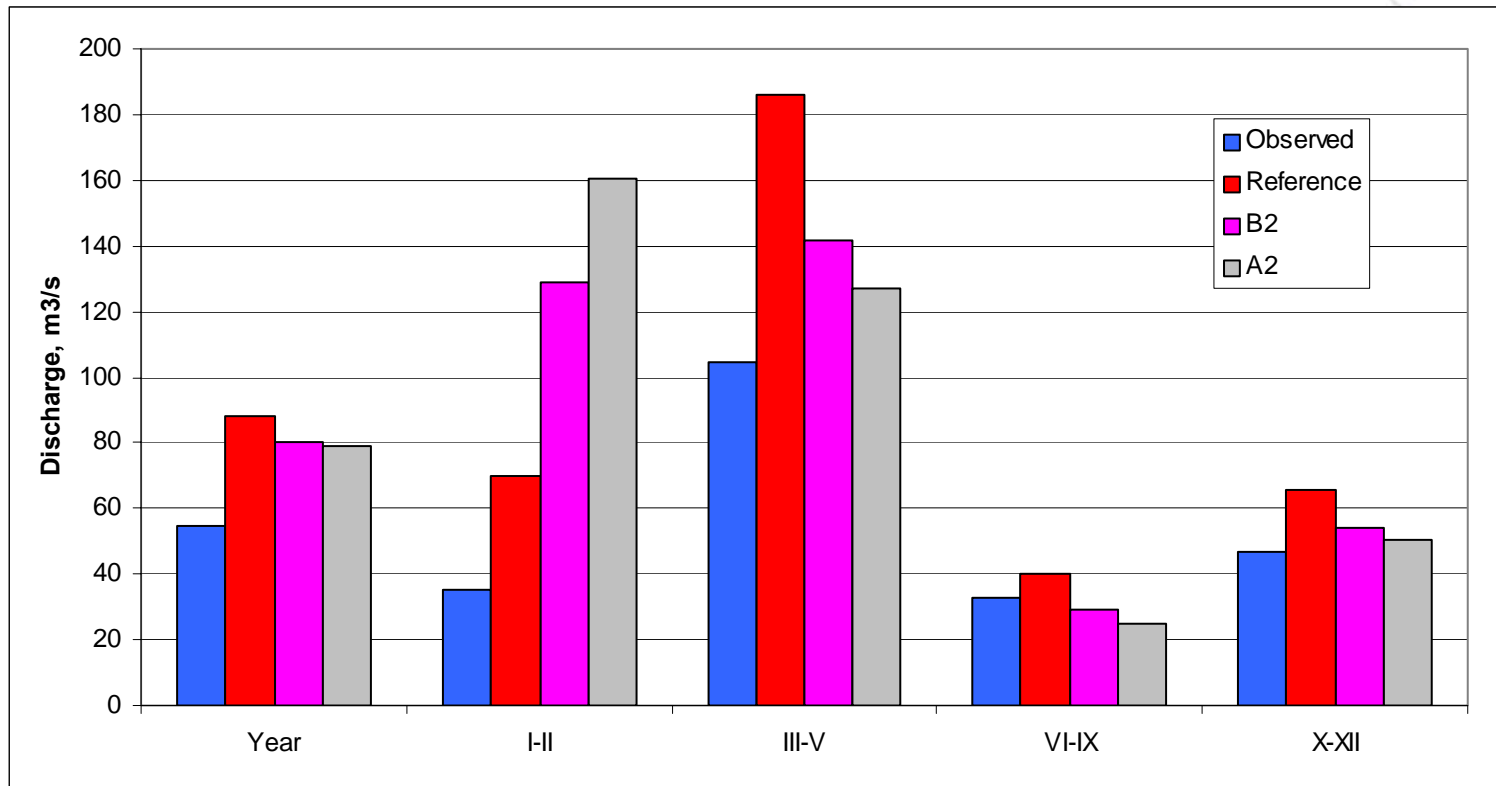
KALME

VALSTS PĒTĪJUMU PROGRAMMA
KLIMATA MAIŅAS IETEKME UZ LATVIJAS ŪDEŅU VIDĪ

3. Hydrological modelling: summary

Disagreement in OBS/MOD for control period

Are the forecasts reliable? Yes & No 😊



KALME

VALSTS PĒTĪJUMU PROGRAMMA
KLIMATA MAIŅAS IETEKME UZ LATVIJAS ŪDEŅU VIDĪ

4. CONCLUSIONS

GENERAL

- Employing the RCM as forcing data source for models of hydrological processes is promising and challenging
- There exist pitfalls along the way
- The “best” RCMs are not necessarily those which match the observations of modelled meteorological parameters better
- Small changes in the forcing may produce reasonable quantitative and qualitative changes in response of a non-linear system

PARTICULAR

- The accurate winter temperature/precipitation regime is crucial for using RCM data in hydrological modelling
- Summer precipitation is rather irrelevant



KALME

VALSTS PĒTĪJUMU PROGRAMMA
KLIMATA MAIŅAS IETEKME UZ LATVIJAS ŪDEŅU VIDĪ