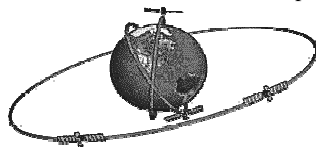


Zemes mākslīgie pavadoņi

- Orbītu veidi
 - polārās orbītas (QuickBird, GPS)
 - ar sauli sinhronās polārās orbītas (LANDSAT, SPOT, IKONOS, NOAA)
 - ģeostacionārās orbītas (GOES, sakaru pavadoņi)



http://www.dutch.org/tech/tech_polar_orbit.html

© Kārlis Kalviškis, 2006.

Ģeostacionāra orbīta



http://www.dutch.org/tech/tech_geostationary.html

© Kārlis Kalviškis, 2006.

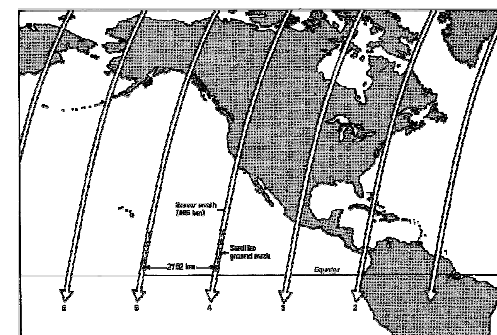
Polārā orbīta



http://www.nasa.gov/About/SC/lan_schib.html

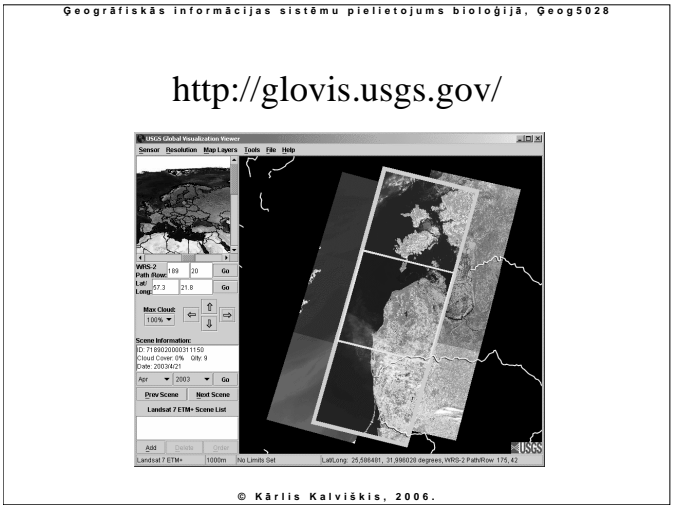
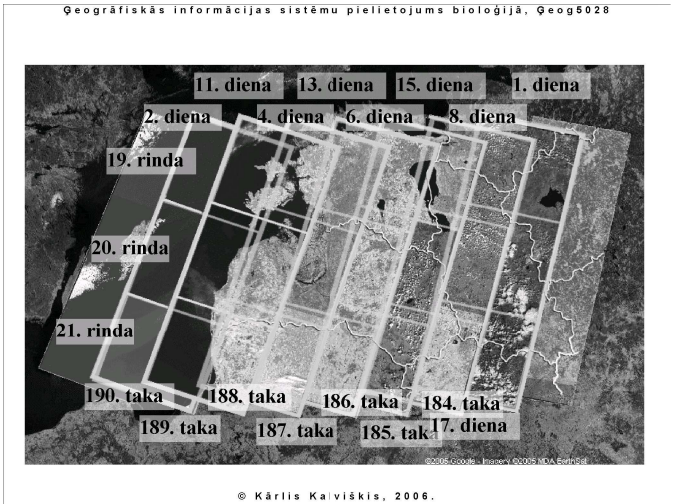
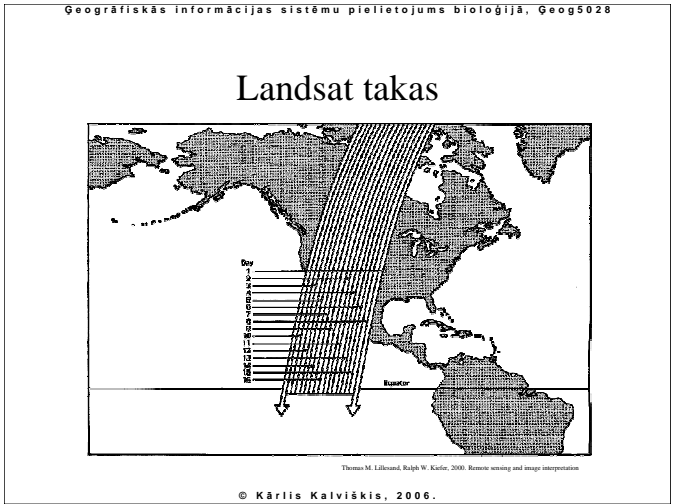
© Kārlis Kalviškis, 2006.

Landsat takas (*path*)



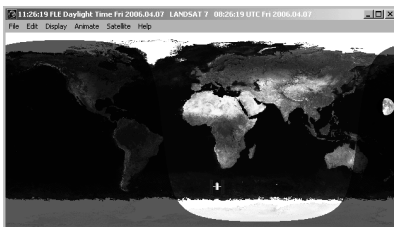
Thomas M. Lillesand, Ralph W. Kiefer, 2000. Remote sensing and image interpretation

© Kārlis Kalviškis, 2006.



Satelītu trajektorijas

- Home Planet
 - <http://www.fourmilab.ch/homeplanet/>
 - \\priede\grozs\Datorlietas\TIS.PRG\HomePlanet\



© Kārlis Kalviškis, 2006.

Izmantotā literatūra

- Thomas M. Lillesand, Ralph W. Kiefer, 2000. Remote sensing and image interpretation 4th ed., John Wiley & Sons
- <http://maps.google.com/>
- <http://rst.gsfc.nasa.gov/>
- http://terra.nasa.gov/About/SC/am_orbit.html
- http://www.thetech.org/exhibits_events/online/satellite/

© Kārlis Kalviškis, 2006.